

IOWA CITY COMMUNITY SCHOOL DISTRICT

ENROLLMENT REPORT

February 10, 2026



**IOWA CITY COMMUNITY
SCHOOL DISTRICT**

All In for All Kids

Enrollment Report

Data statistics in this presentation will be found on the Iowa Department of Education website under the [Education Statistics page](#) and the [Certified Enrollment page](#).

**Enrollment
Data**

1

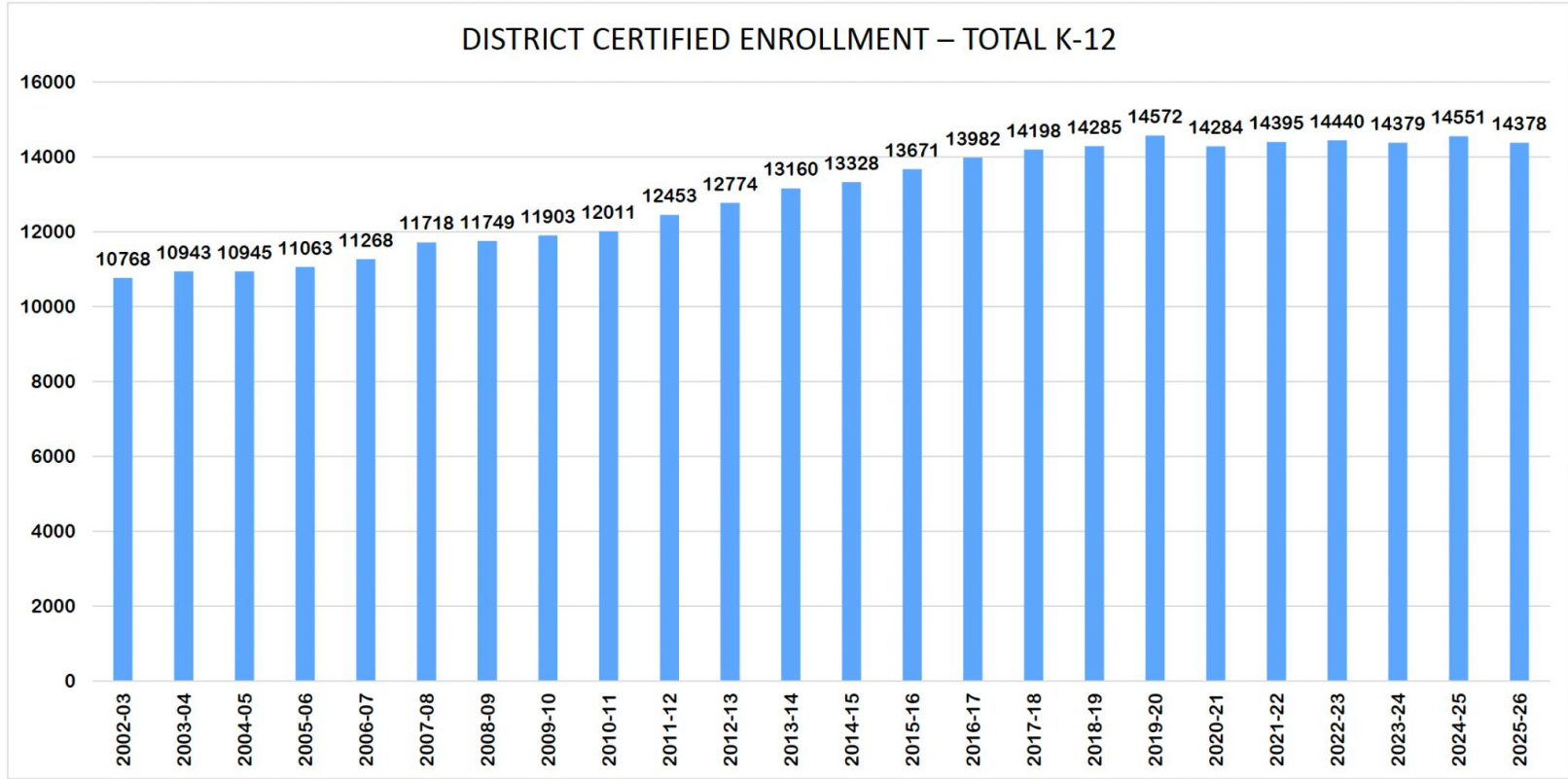
Class Size

2

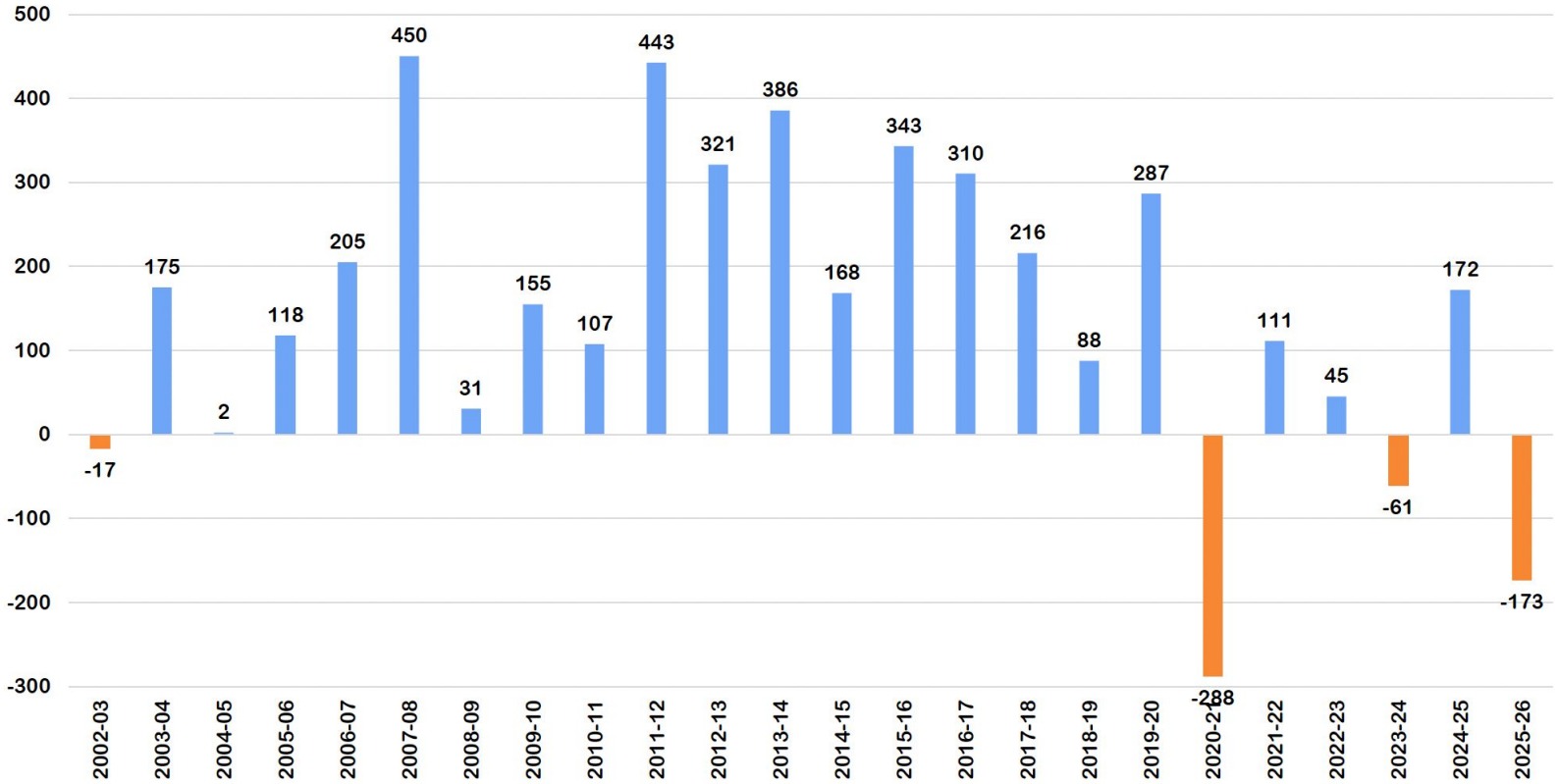
**Feedback &
Questions**

3

Enrollment



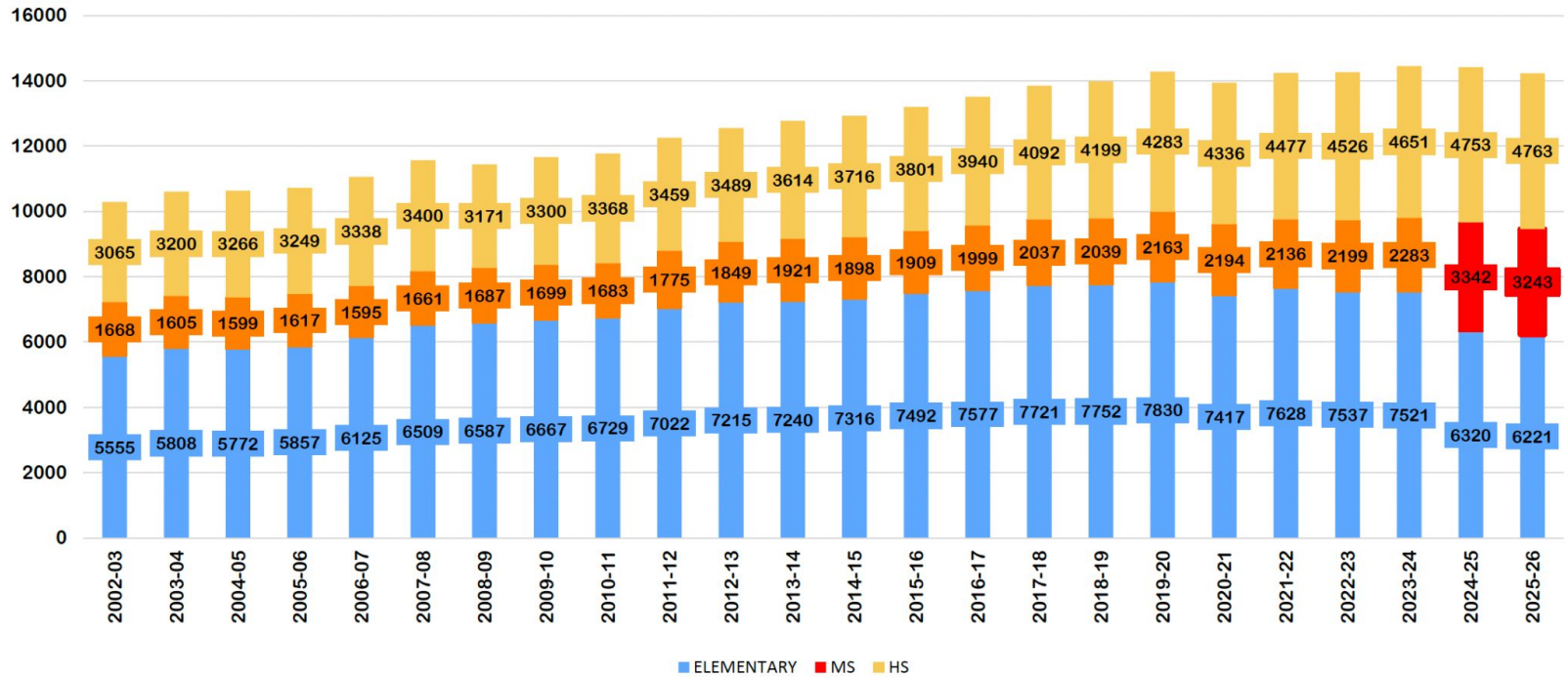
District Certified Enrollment - Annual Change (Number)



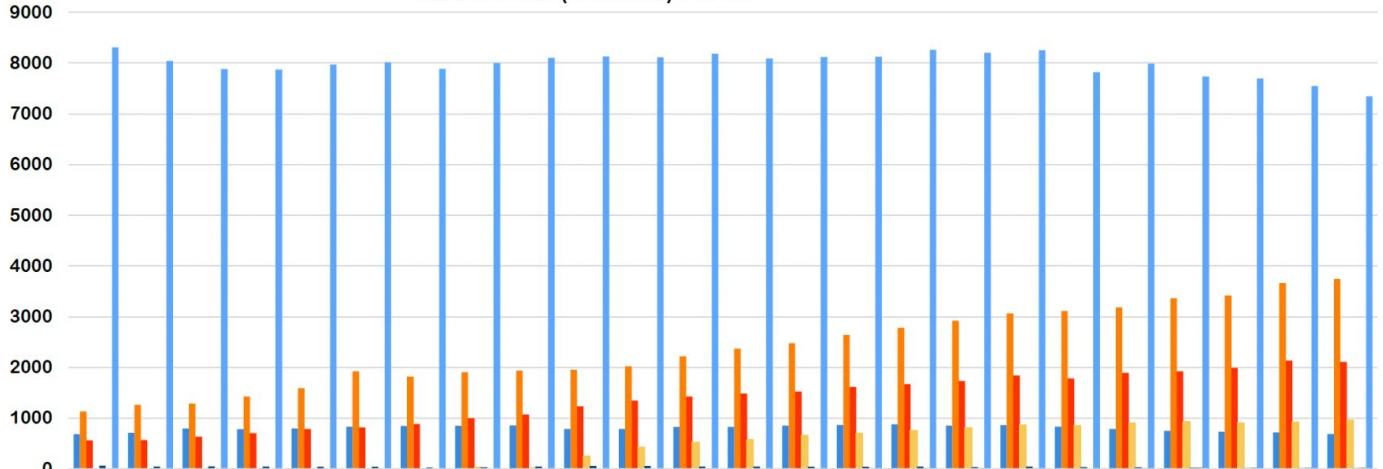
Enrollment

Enrollment

DISTRICT HEADCOUNT ENROLLMENT BY GRADE LEVEL K-12



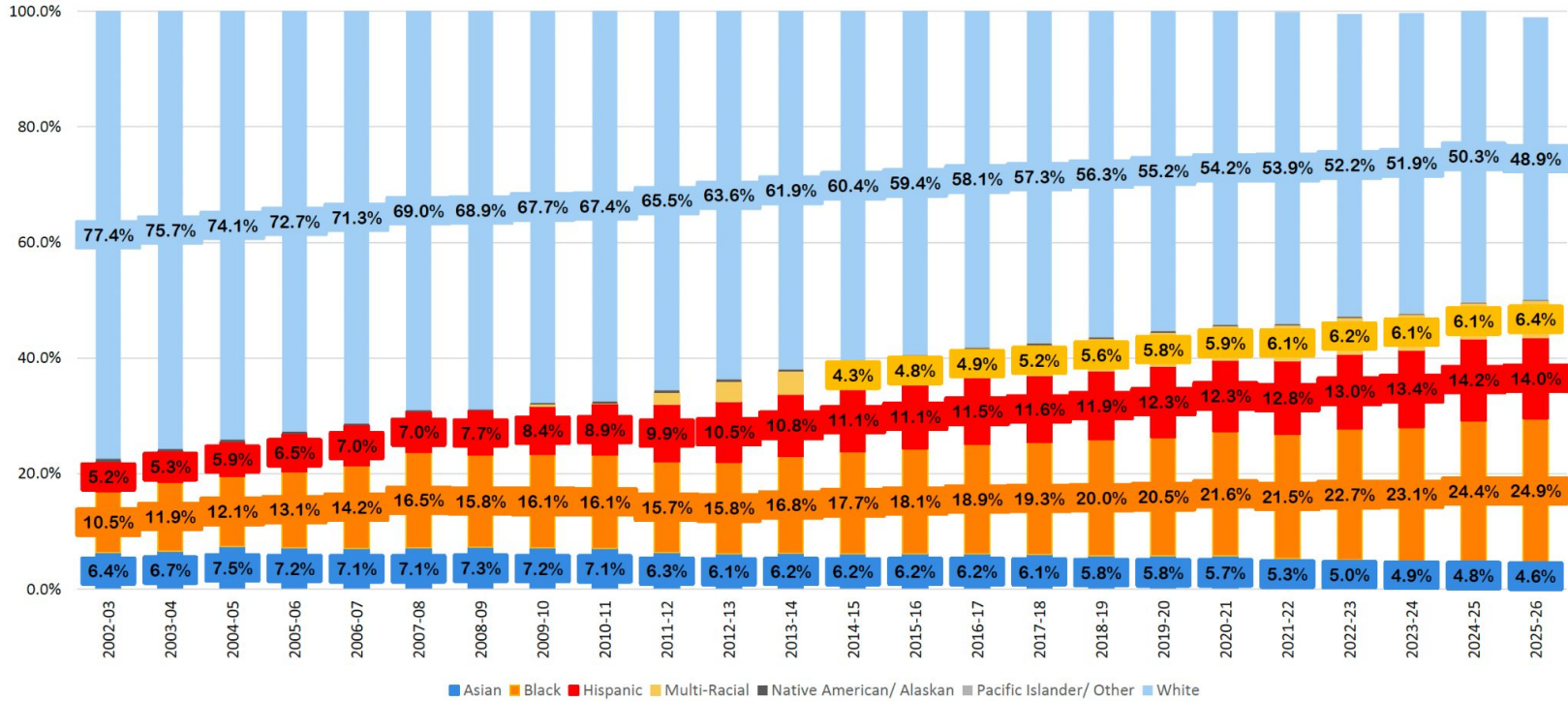
DISTRICT ENROLLMENT RACE AND ETHNICITY HEADCOUNT (NUMBER) PK-12



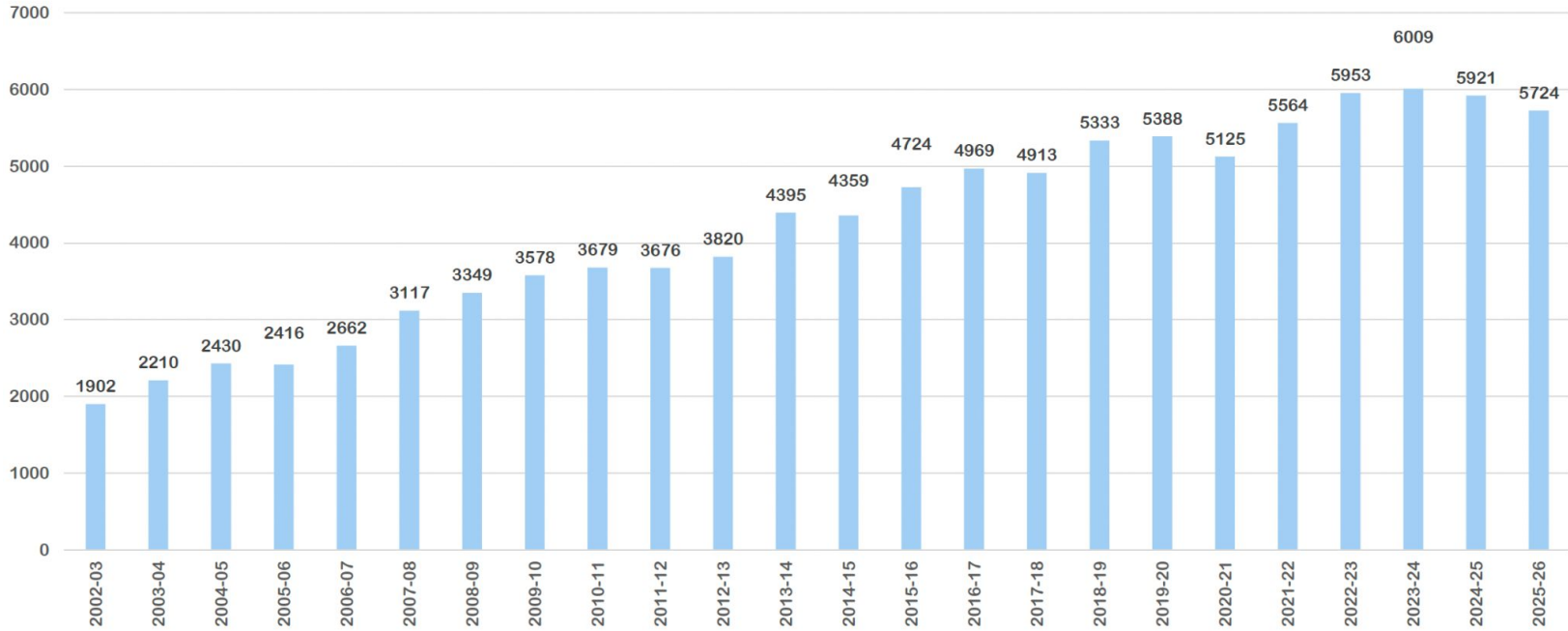
	2002-03	2003-04	2004-05	2005-06	2006-07	2007-08	2008-09	2009-10	2010-11	2011-12	2012-13	2013-14	2014-15	2015-16	2016-17	2017-18	2018-19	2019-20	2020-21	2021-22	2022-23	2023-24	2024-25	2025-26
Asian	683	707	794	782	795	829	840	847	853	785	784	822	824	848	863	877	848	860	829	786	748	728	715	688
Black	1129	1263	1284	1423	1593	1921	1814	1906	1933	1951	2019	2214	2367	2477	2638	2782	2917	3064	3111	3185	3363	3419	3659	3740
Hispanic	556	566	631	705	784	814	885	994	1068	1232	1344	1423	1486	1523	1614	1671	1728	1842	1779	1891	1922	1990	2132	2108
Multi-Racial								34	9	251	430	520	570	652	692	754	813	862	845	903	925	902	922	956
Native American/ Alaskan	62	43	48	42	38	38	26	32	44	52	53	45	44	38	38	43	35	42	34	29	23	19	17	16
Pacific Islander/ Other									5	7	9	9	14	9	18	18	16	16	12	17	28	24	23	21
White	8310	8041	7880	7870	7970	8013	7884	8002	8103	8127	8112	8182	8092	8119	8123	8260	8203	8253	7818	7988	7736	7694	7545	7342

Enrollment

DISTRICT ENROLLMENT - RACE AND ETHNICITY HEADCOUNT (PERCENTAGE) PK-12

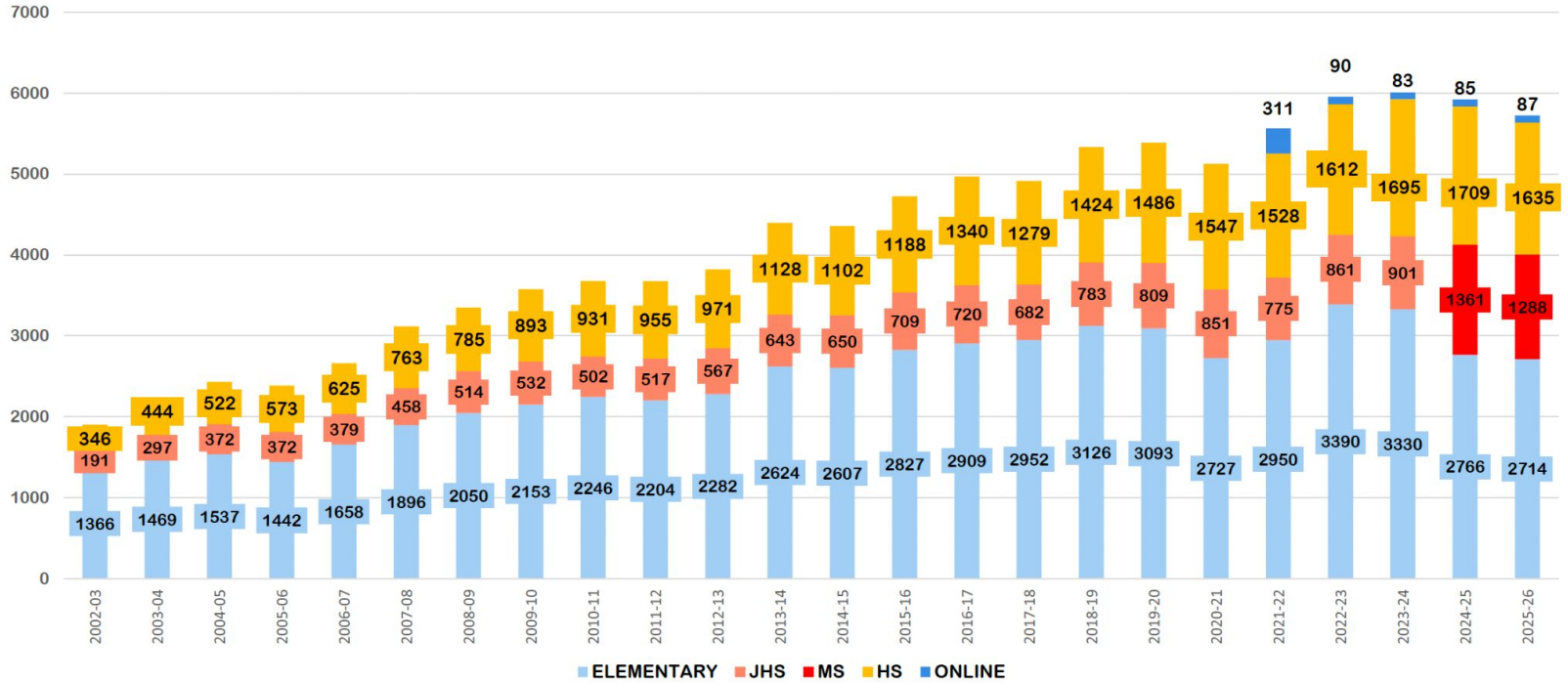


FREE AND REDUCED-PRICE LUNCH ELIGIBLE STUDENTS HEADCOUNT (NUMBER) K-12

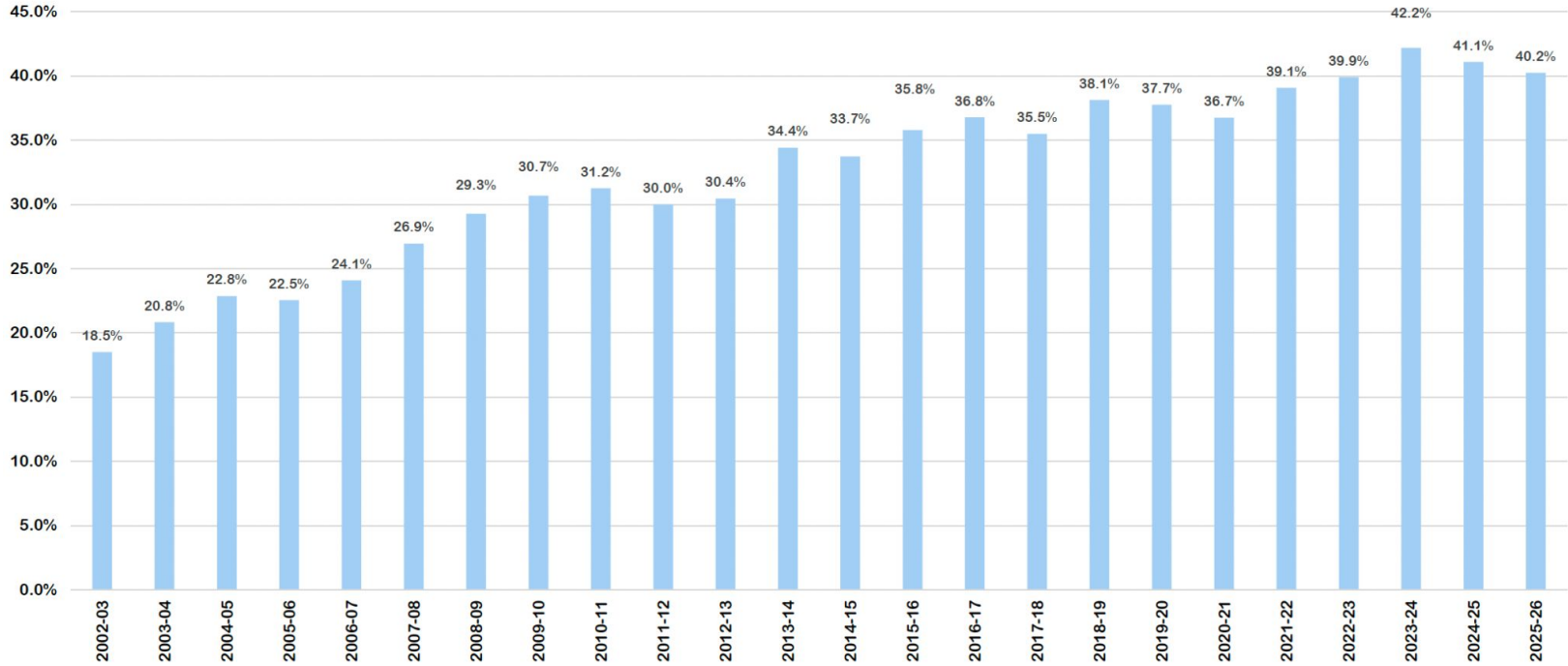


Enrollment

FREE AND REDUCED-PRICE LUNCH ELIGIBLE STUDENTS- HEADCOUNT (NUMBER) K-12

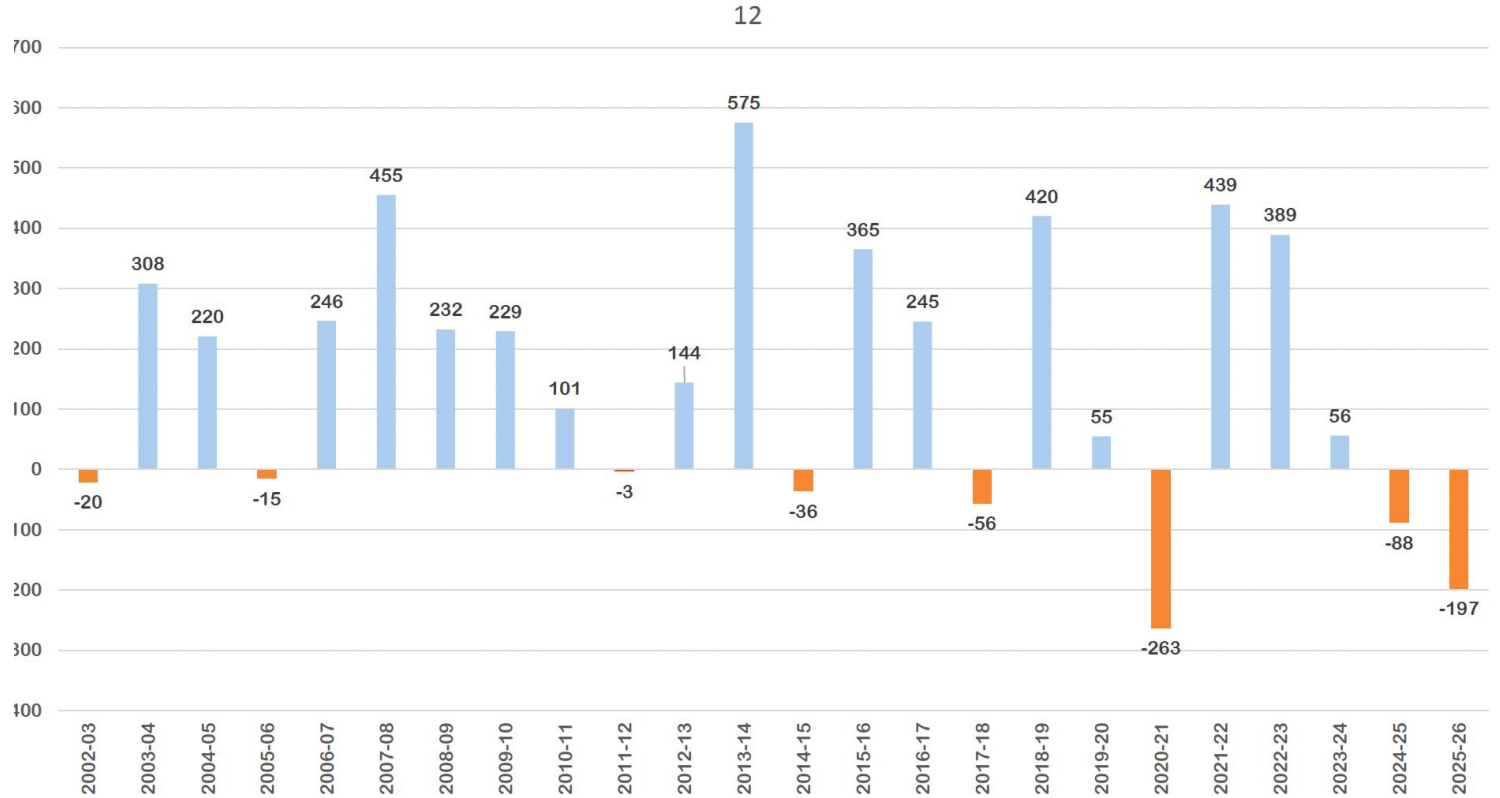


FREE AND REDUCED-PRICE LUNCH ELIGIBLE STUDENTS HEADCOUNT (PERCENTAGES) K-12

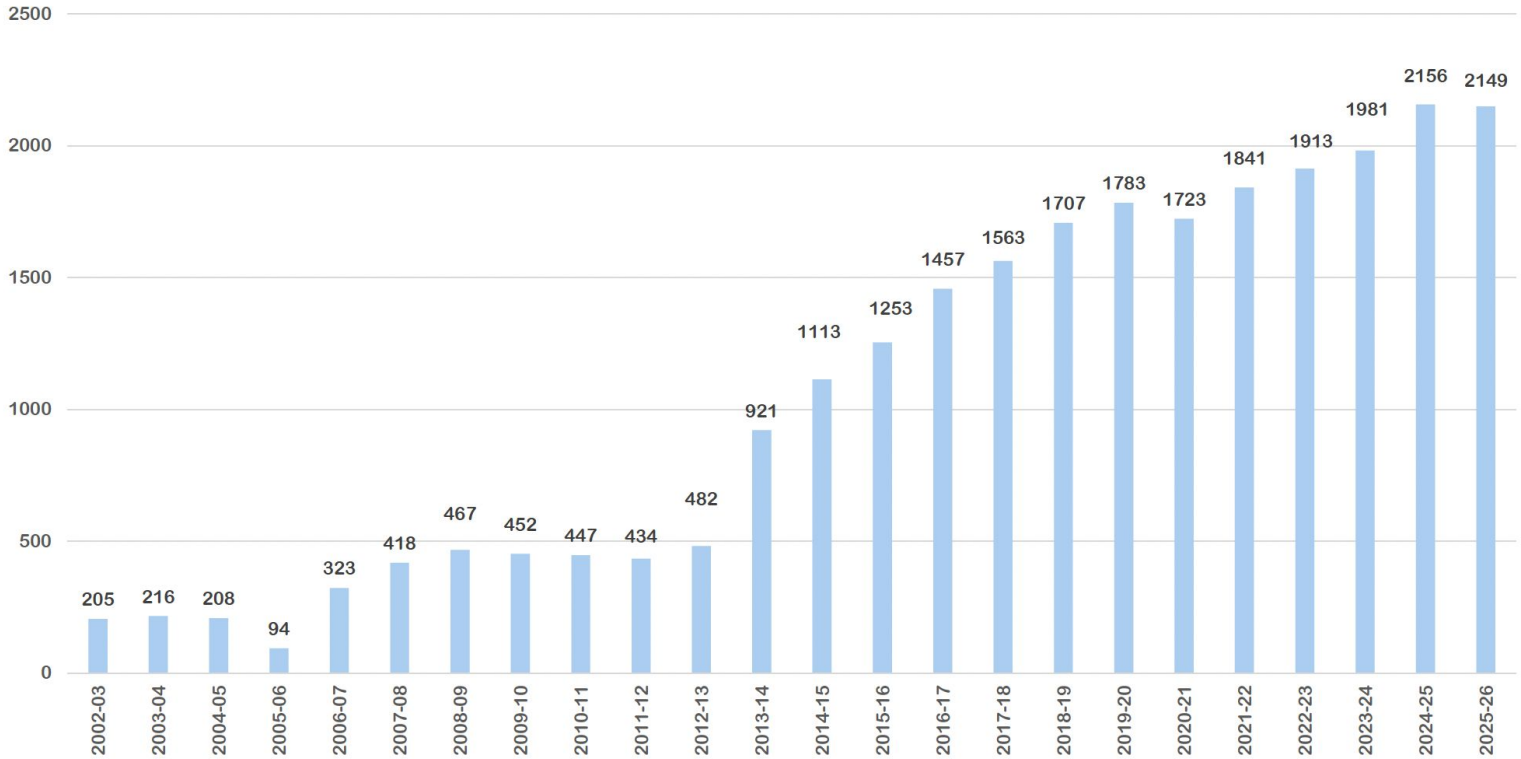


Enrollment

FREE AND REDUCED-PRICE LUNCH ELIGIBLE STUDENTS-ANNUAL CHANGE HEADCOUNT (NUMBER)

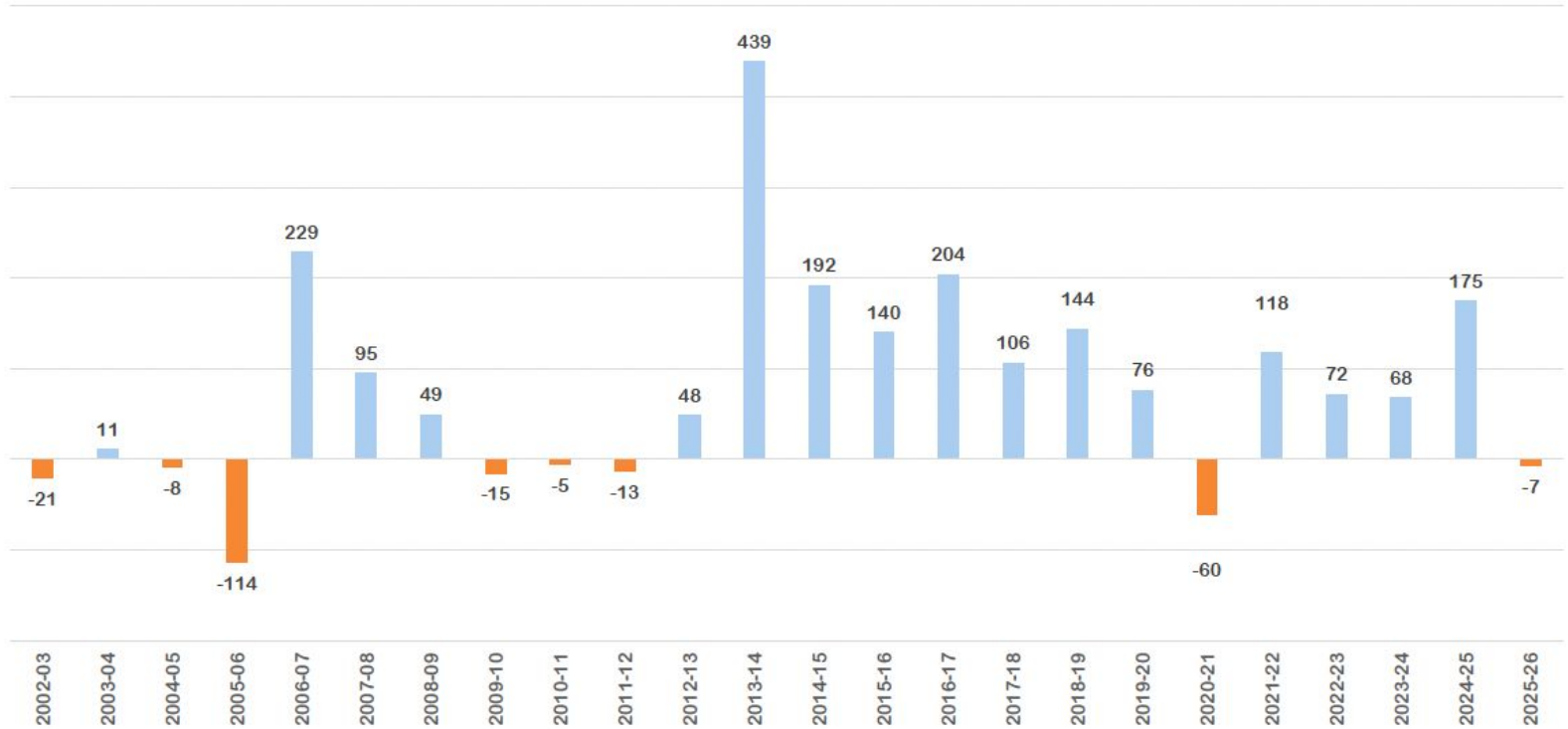


ENGLISH LANGUAGE LEARNER ELIGIBLE STUDENTS HEADCOUNT (NUMBER) K-12

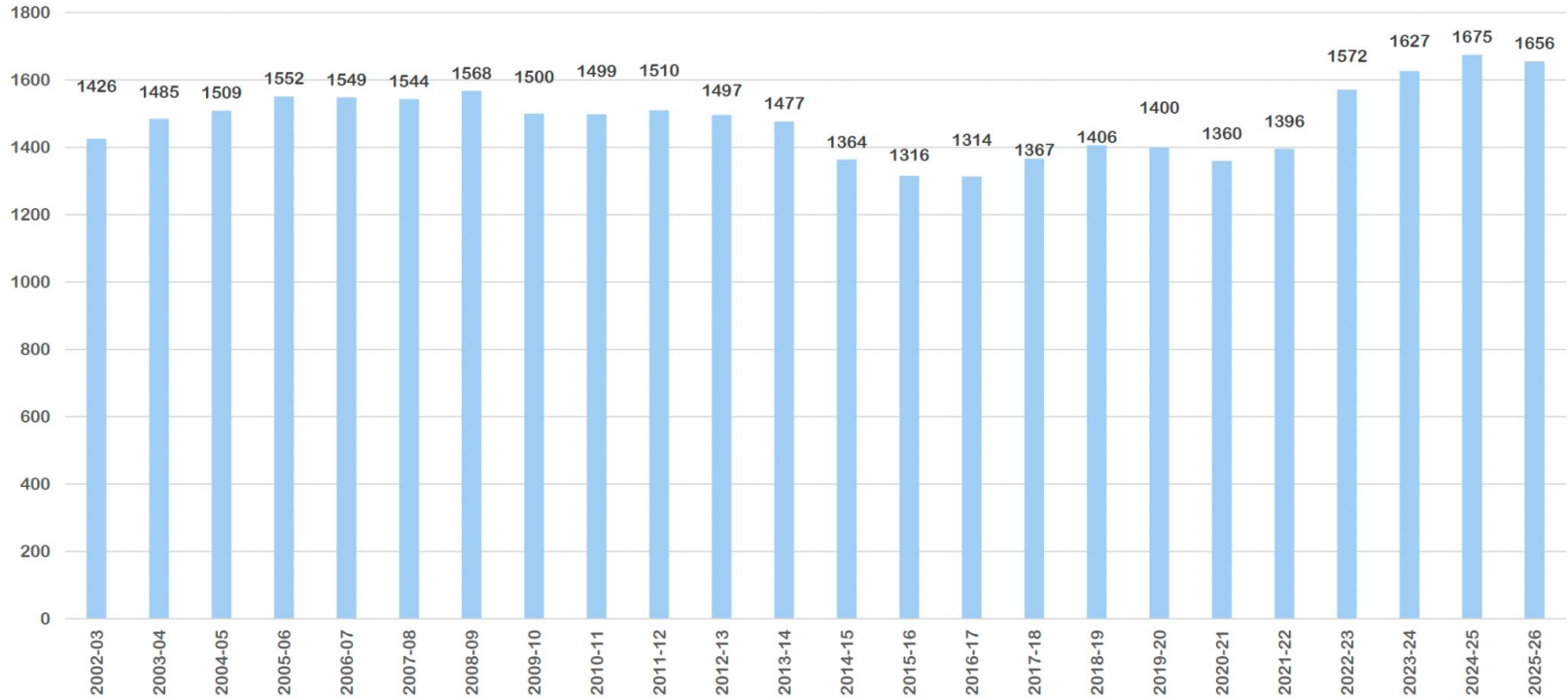


Enrollment

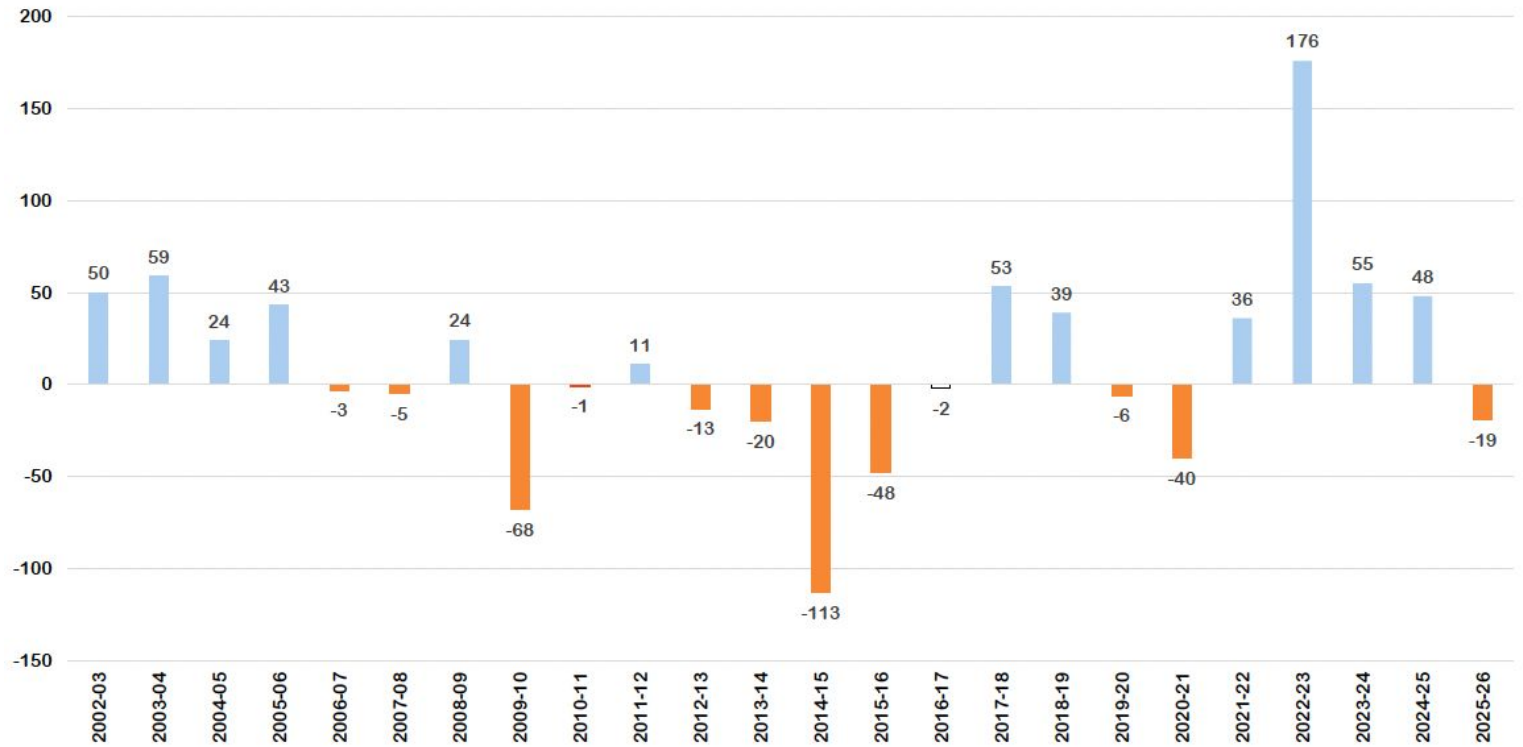
ENGLISH LANGUAGE LEARNER ELIGIBLE STUDENTS ANNUAL CHANGE (NUMBER) HEADCOUNT K-12



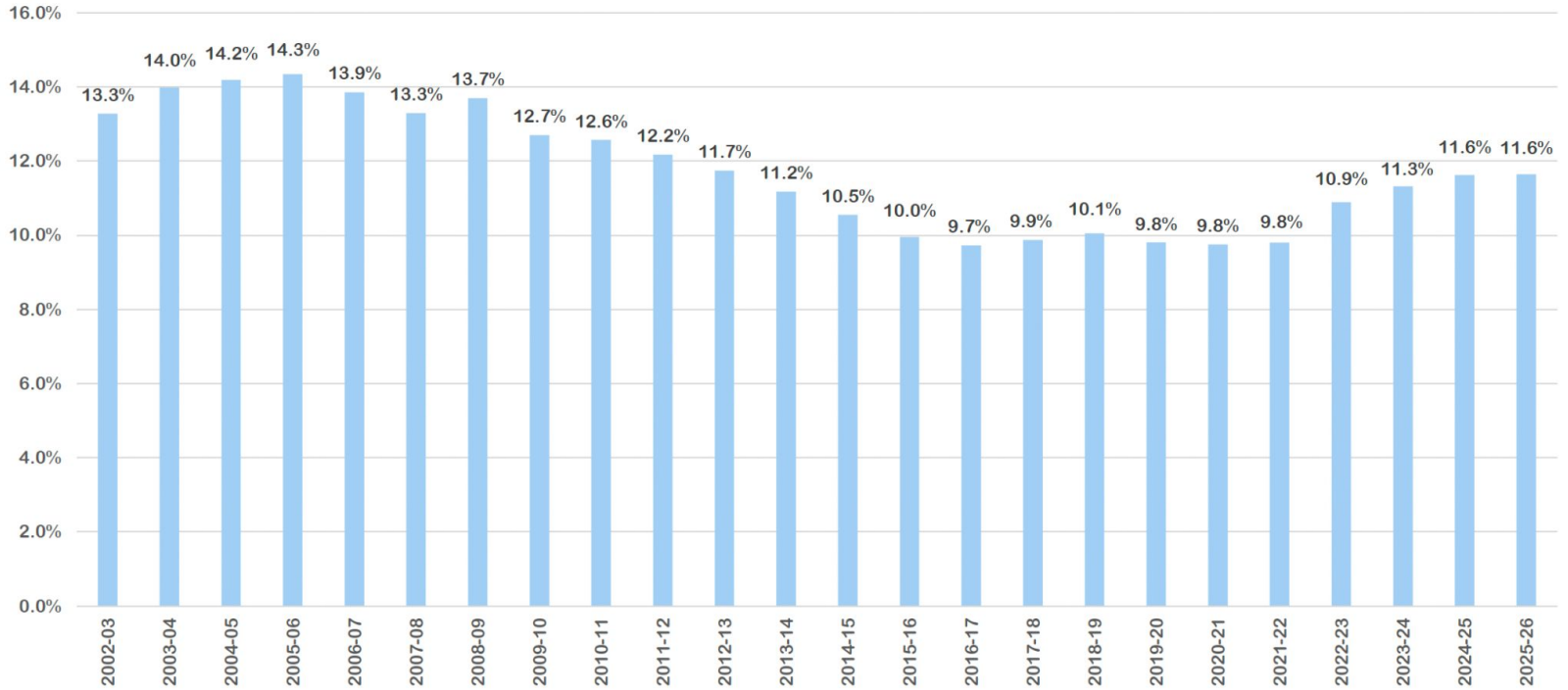
SPECIAL EDUCATION ELIGIBLE STUDENTS HEADCOUNT (NUMBER) K-12



SPECIAL EDUCATION ELIGIBLE STUDENTS ANNUAL CHANGE (NUMBER) K-12



SPECIAL EDUCATION ELIGIBLE STUDENTS (PERCENTAGE) K-12



Class Size Frequency Chart – Legend



Class Size Frequency Chart – Additional Information

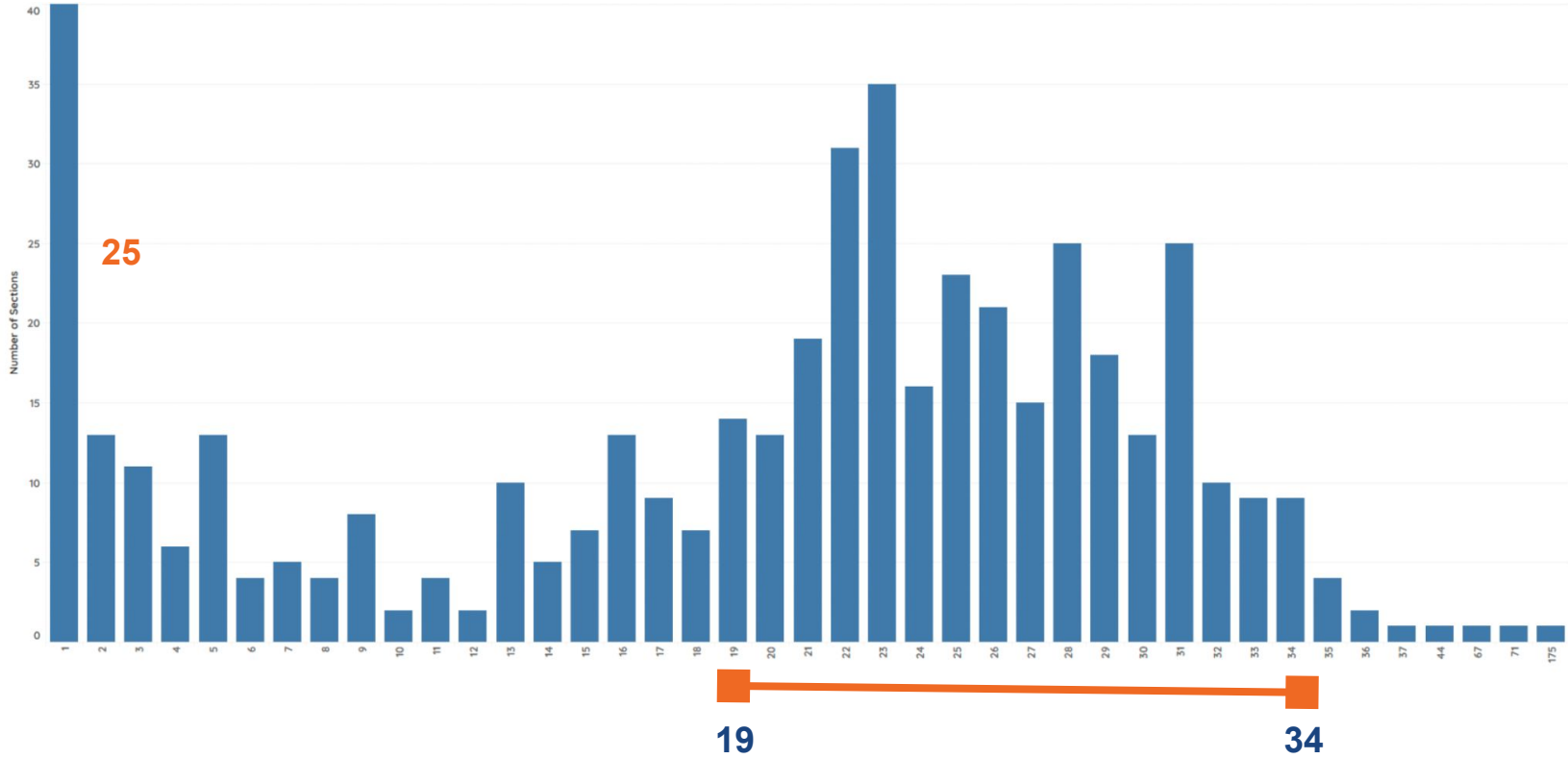
Number of Sections

- Single Student and small classes are due to independent study courses, credit recovery, special education, ELL and other unique circumstances
- High class sizes are primarily due to performance music classes/rosters
- The bar lines between the orange numbers are the majority of the class sizes across the school

Number of Students in a Class

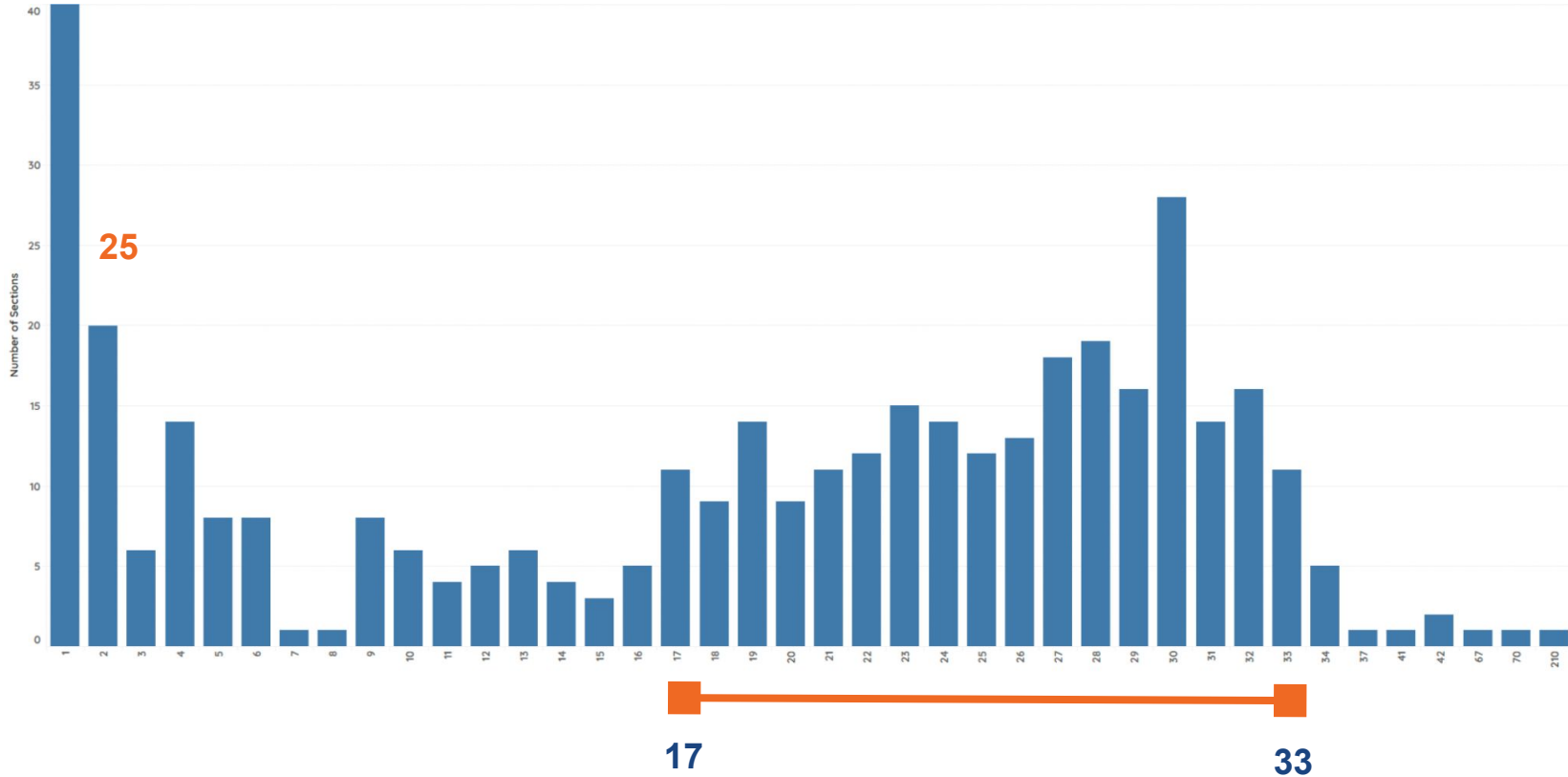
Class Size Frequency Chart – City High School

Class Size Data

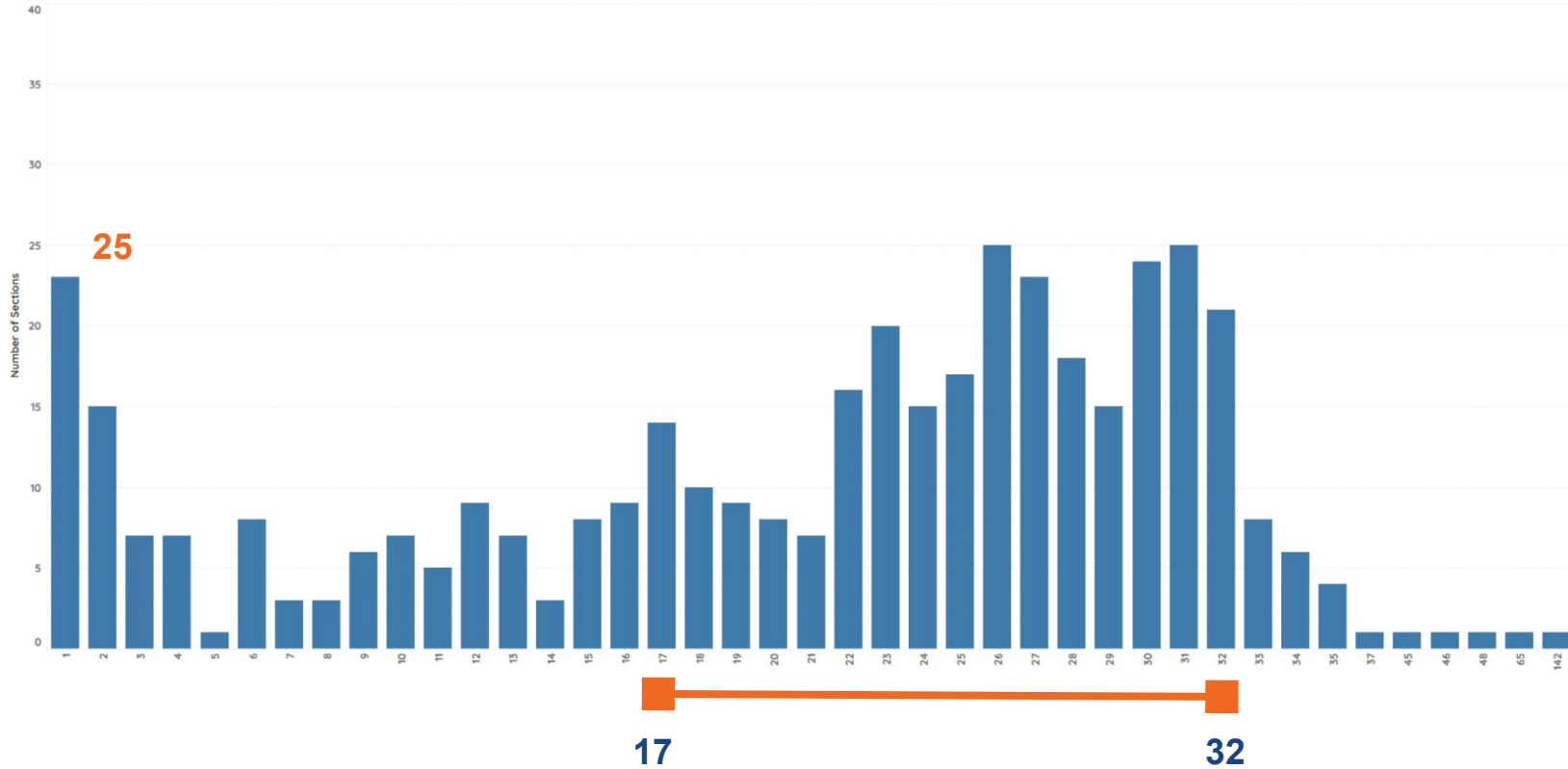


Class Size Frequency Chart – Liberty High School

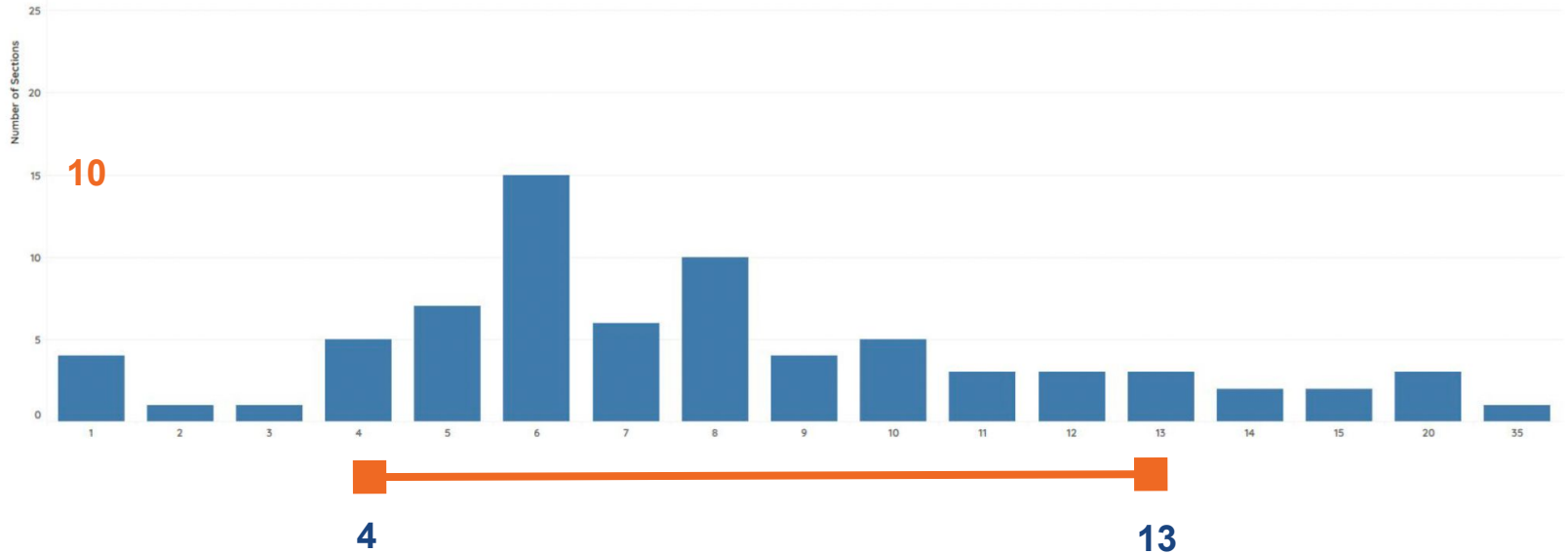
Class Size Data



Class Size Frequency Chart – West High School



Class Size Frequency Chart Tate High School



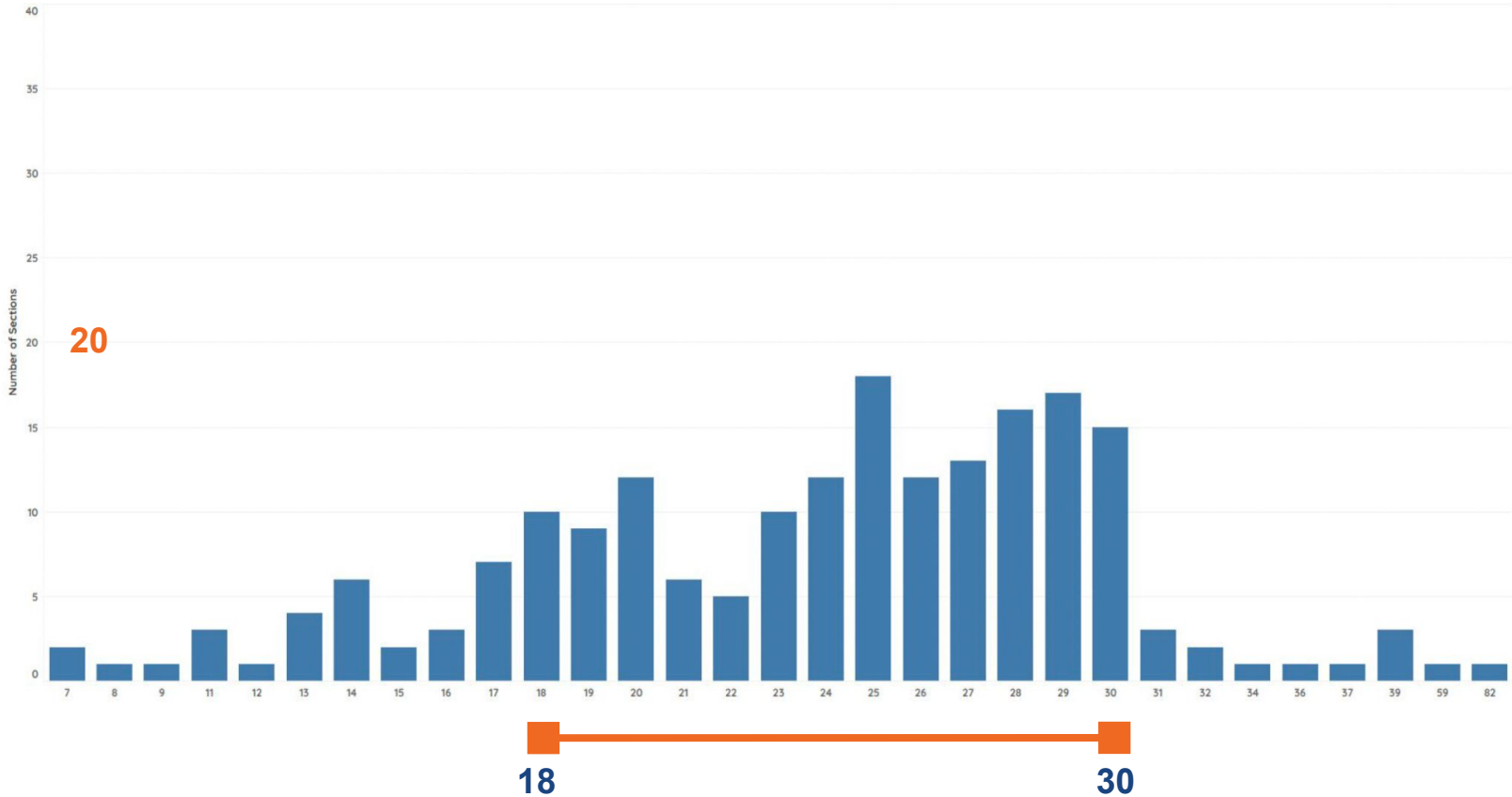
Class Size Frequency Chart Online Program

ICCSO Online has a wide range of class sizes as they serve 238 students from grades 3 -12.

- 3rd and 4th Grade are combined to serve 12 total students
- 5th and 6th Grade are combined to serve 31 total students
- In 7th - 12th Grades we have class sizes ranging from 1 student to 39 students
 - Some of the very small courses are Edgenuity courses that the students are taking independently
 - The synchronous teaching courses continue to be full with 154 students at the high school level

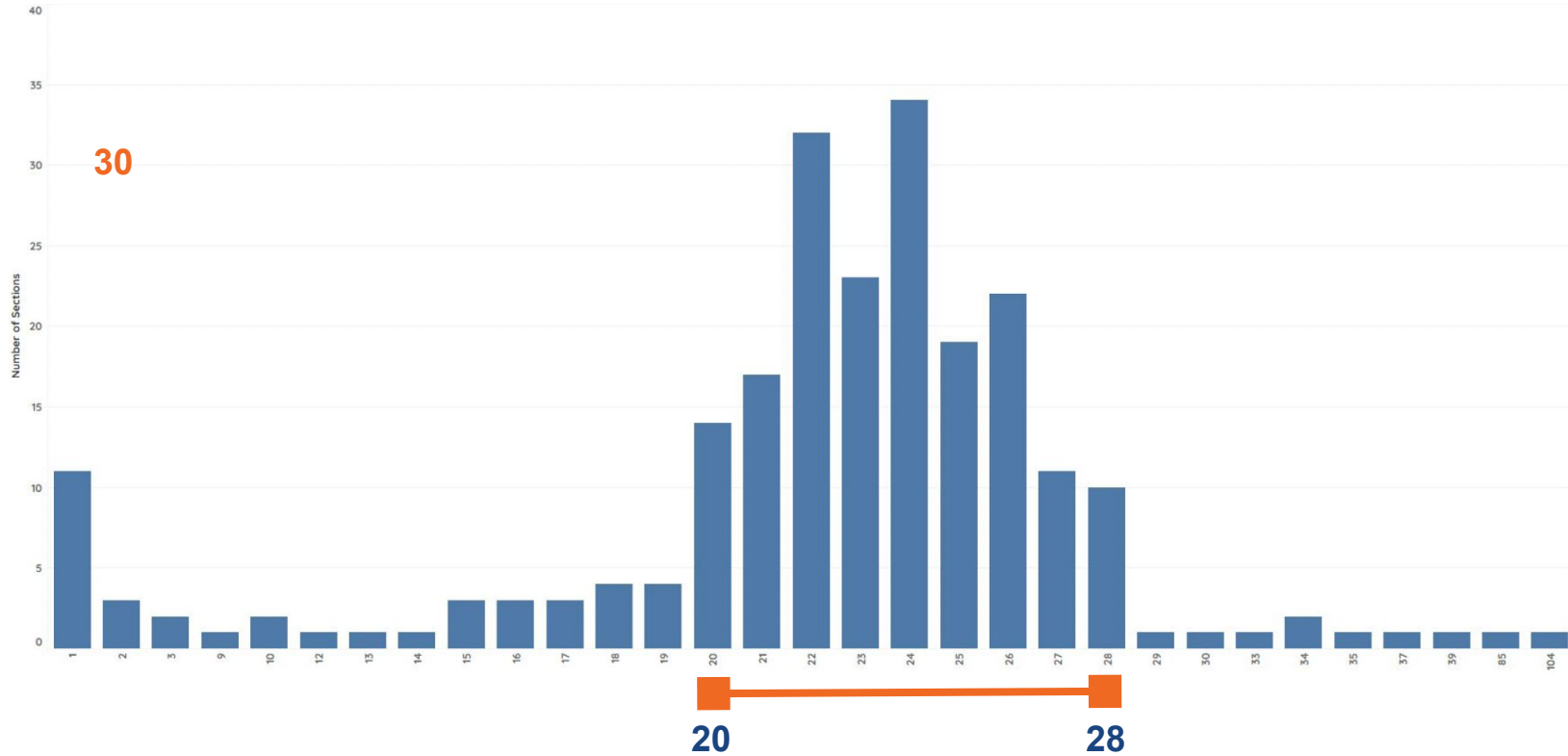
Class Size Data

Class Size Frequency Chart – North Central Middle School

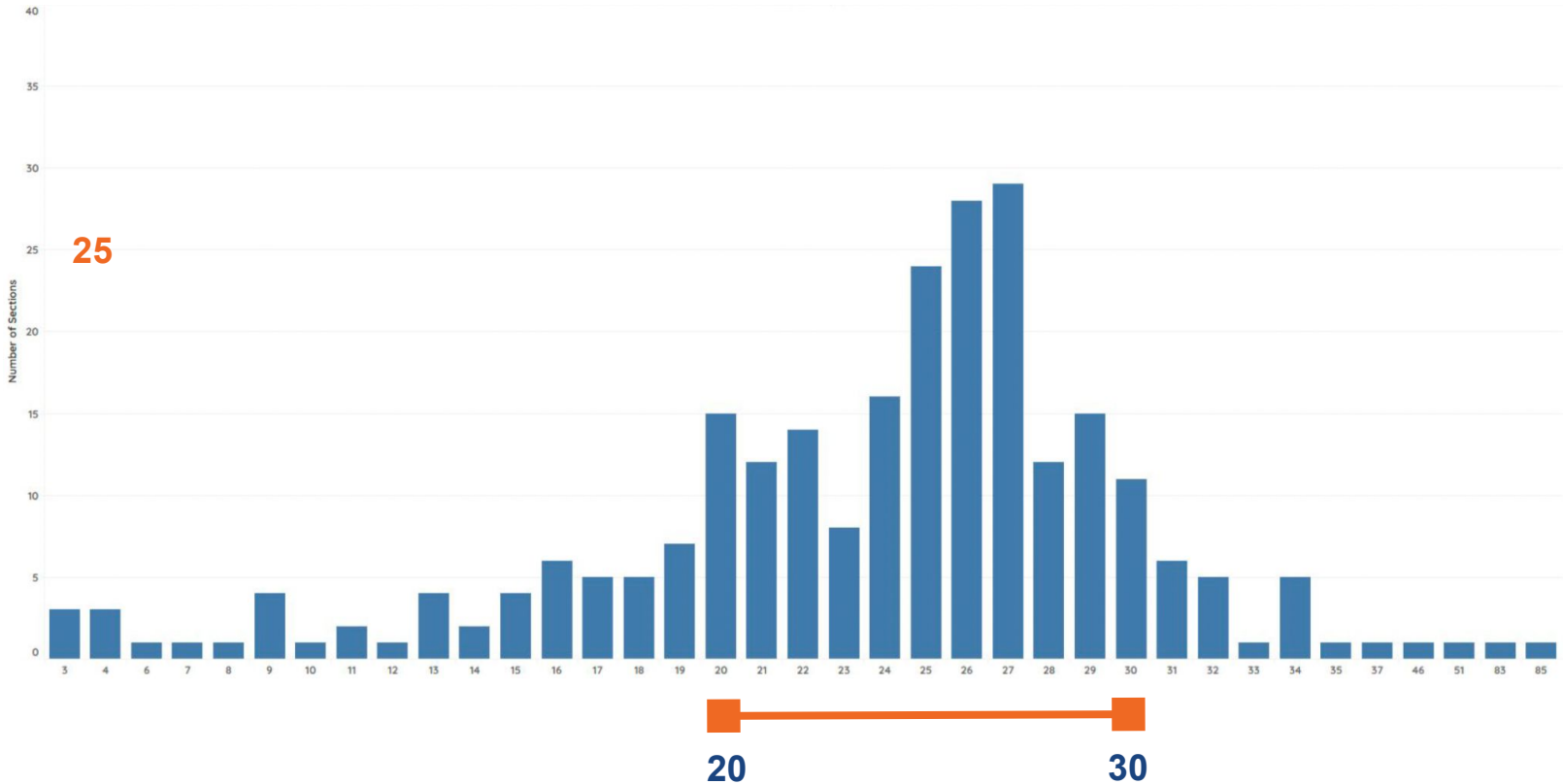


Class Size Data

Class Size Frequency Chart – Northwest Middle School



Class Size Frequency Chart – Southeast Middle School



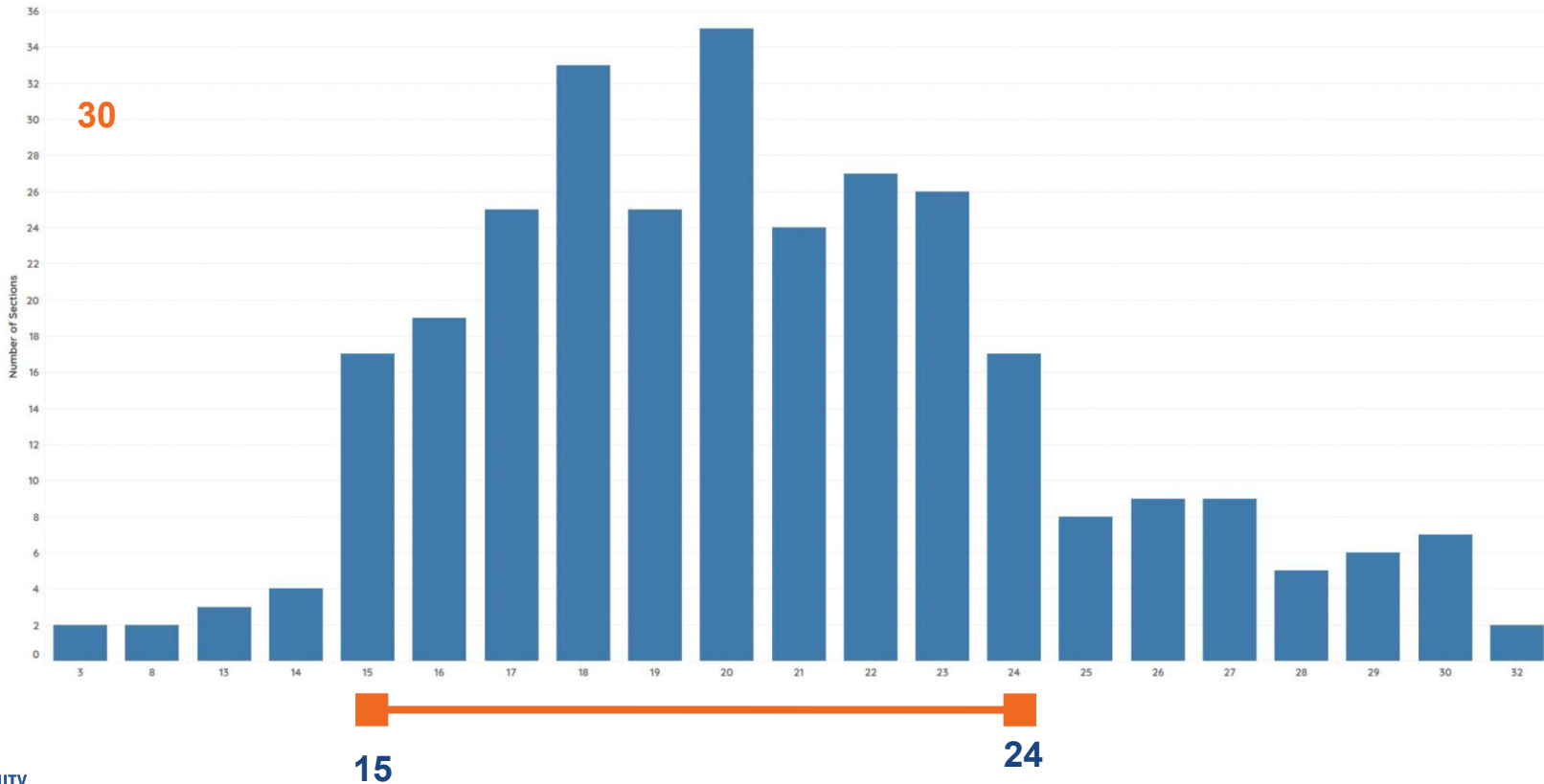
Secondary Median Class Size

	City High School	Liberty High School	West High School	Elizabeth Tate High School	ICCSO Online	North Central Middle School	Northwest Middle School	Southeast Middle School	Total
Art	24	18	20	8	11	22	27	18	21
Business	27	14	20		10				23
Engineering (PLTW)	9	19	13						15
English Language Arts	22	27	26	8	26	27	23	24	24
Family & Consumer Science	23	20	21	6	11	27	25	27	20
Industrial Arts	9	4	4	1	1	24	23	27	18
Mathematics	23	23	26	6	16	28	22	24	23
Music	33	13	9		11	15	19	20	19
Physical Education & Health	16	27	24	8	15	29	21	30	25
Science	25	27	27	9	13	23	24	26	25
Social Studies	29	29	28	8	5	27	22	27	27
World Languages	23	24	25		5	22	23	21	23
Grand Total	23	24	25	7	15	25	23	26	24

Secondary Average/Mean Class Size

	City High School	Liberty High School	West High School	Elizabeth Tate High School	ICCSO Online	North Central Middle School	Northwest Middle School	Southeast Middle School	Total
Art	22	17	18	9	11	21	27	18	20
Business	25	14	18		13				20
Engineering (PLTW)	13	17	15						15
English Language Arts	21	25	25	9	23	25	22	22	23
Family & Consumer Science	23	20	20	5	11	25	24	27	18
Industrial Arts	10	8	6	1	1	23	23	26	16
Mathematics	22	22	22	7	18	27	21	22	21
Music	41	27	23		11	19	28	29	27
Physical Education & Health	17	25	23	15	15	27	17	28	24
Science	21	23	26	10	16	23	24	26	23
Social Studies	25	25	24	8	13	25	23	27	24
World Languages	23	22	23		5	21	23	21	22
Grand Total	22	22	23	8	16	24	22	25	22

Class Size Frequency Chart – All Elementary Schools



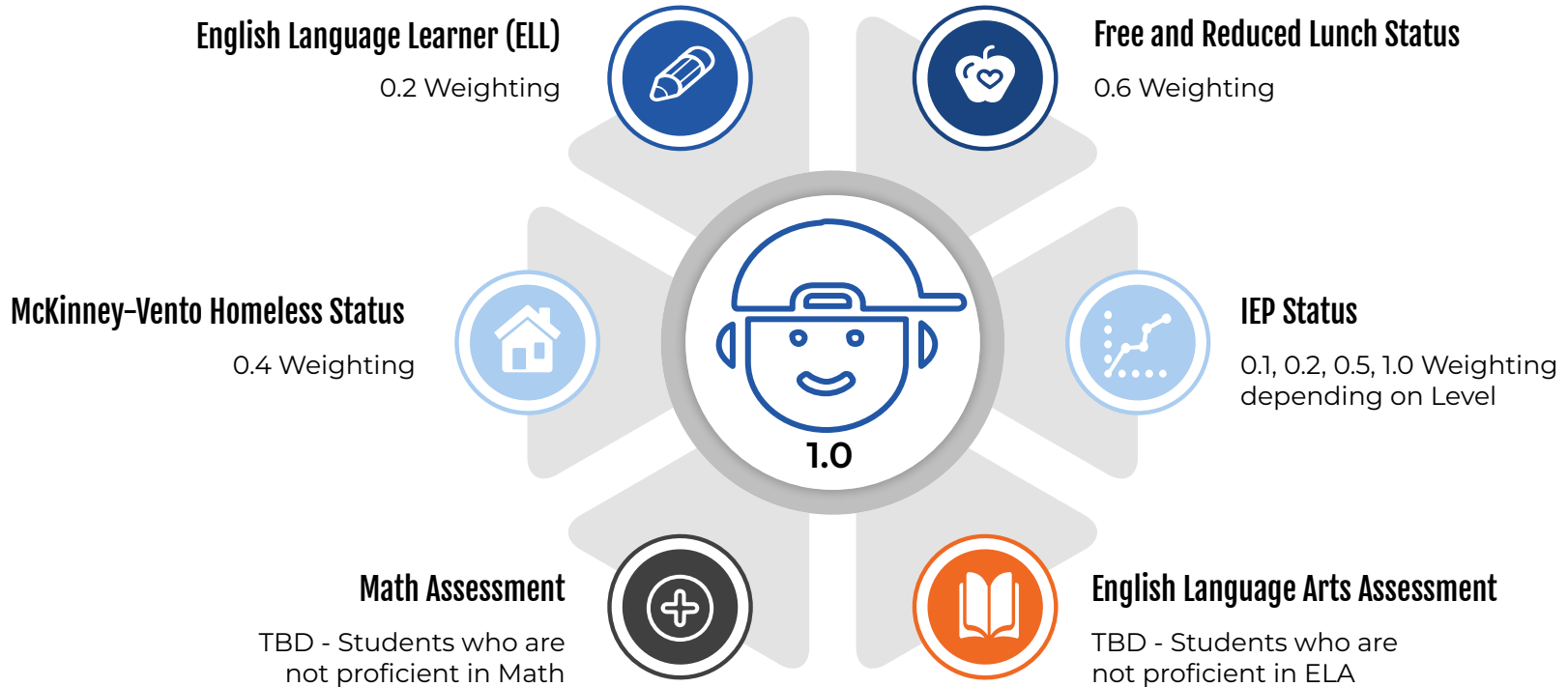
Elementary Median Class Size

	ALEXANDER	BORLAUG	C. GRANT	CORALVILLE CENT.	GARNER	GRANT WOOD	HOOVER	HORN	ICCSO OLP 3rd-5th	KIRKWOOD	LEMME	LINCOLN	LONGFELLOW	LUCAS	MANN	PENN	SHIMEK	TWAIN	VAN ALLEN	WEBER	WICKHAM	TOTAL
Kindergarten	16	18	17	16	17	20	18	21		18	17	15	20	17	24	22	16	16	17	22	22	18
1st Grade	18	19	19	15	20	17	18	20		22	24	21	22	15	15	22	14	17	15	21	20	20
2nd Grade	17	23	19	18	17	18	25	23		21	18	22	24	17	16	22	22	17	23	20	27	20
3rd Grade	20	24	23	24	29	18	23	22	3	14	21	15	23	20	29	26	16	18	20	24	31	21
4th Grade	23	24	20	30	30	23	28	23	8	17	29	17	26	21	32	25	19	28	28	21	22	23
5th Grade	18	19	27	21	29	21	22	24	13	19	20	21	20	19	19	26	25	27	28	20	27	20
TOTALS:	18	21	19	18	29	19	23	23	8	18	21	19	22	18	16	23	17	17	21	21	22	20

Elementary Average Class Size

	ALEXANDER	BORLAUG	C. GRANT	CORALVILLE CENT.	GARNER	GRANT WOOD	HOOVER	HORN	ICCSO OLP 3rd-5th	KIRKWOOD	LEMME	LINCOLN	LONGFELLOW	LUCAS	MANN	PENN	SHIMEK	TWAIN	VAN ALLEN	WEBER	WICKHAM	TOTAL
Kindergarten	16	18	17	16	17	20	17	21		18	17	15	20	17	24	22	16	16	17	22	22	19
1st Grade	18	19	19	15	20	17	18	20		22	24	21	22	15	15	23	14	17	15	21	20	19
2nd Grade	17	23	19	17	17	18	25	23		21	18	22	23	17	16	22	22	17	23	20	27	20
3rd Grade	20	24	23	24	29	19	23	22	3	15	21	15	23	20	29	26	16	17	20	23	31	21
4th Grade	22	24	20	30	30	23	28	23	8	17	29	18	26	21	32	25	19	28	28	22	22	23
5th Grade	17	20	27	21	29	21	22	23	13	19	20	20	20	19	18	26	25	27	28	20	27	21
TOTALS:	18	21	21	20	24	19	22	22	9	18	21	18	22	18	19	24	17	20	21	21	24	20

Current Elementary WRAM Weighting



Elementary WRAM 1

Alexander				Weber			
	Students	Sections	Avg. Class Size		Students	Sections	Avg. Class Size
K	64	4	16.0	K	62	3	20.7
1st	73	4	18.3	1st	63	3	21.0
2nd	52	3	17.3	2nd	56	3	18.7
3rd	57	3	19.0	3rd	67	3	22.3
4th	71	3	23.7	4th	70	3	23.3
5th	50	3	16.7	5th	63	3	21.0
	367	20	18.4		381	18	21.2
Horn				Hoover			
	Students	Sections	Avg. Class Size		Students	Sections	Avg. Class Size
K	81	4	20.3	K	67	4	16.8
1st	60	3	18.5	1st	73	4	18.3
2nd	69	3	23.0	2nd	72	3	24.0
3rd	66	3	22	3rd	71	3	23.7
4th	67	3	22.3	4th	81	3	27.0
5th	68	3	24	5th	90	4	22.5
	411	19	21.6		454	21	21.6

Kindergarten: 24
 1st and 2nd: 26
 3rd-5th: 30

Class size data is from Infinite Campus as of 1/30/26

Elementary WRAM 2

Kindergarten: 24, 1st and 2nd: 28, 3rd-5th: 32

Class Size Data

Grant Wood				Longfellow				Kirkwood				Borlaug			
	Students	Sections	Avg. Class Size		Students	Sections	Avg. Class Size		Students	Sections	Avg. Class Size		Students	Sections	Avg. Class Size
K	39	2	19.5	K	43	2	21.5	K	37	2	18.5	K	56	3	18.7
1st	52	3	17.3	1st	45	2	22.5	1st	44	2	22.0	1st	55	3	18.3
2nd	34	2	17	2nd	49	2	24.5	2nd	43	2	21.5	2nd	68	3	22.7
3rd	57	3	19.0	3rd	44	2	22	3rd	28	2	14	3rd	47	2	23.5
4th	47	2	23.5	4th	57	2	28.5	4th	34	2	17	4th	70	3	23.3
5th	41	2	20.5	5th	60	3	20.0	5th	37	2	18.5	5th	59	3	19.7
	270	14	19.3		298	13	22.9		223	12	18.6		355	17	21.0
Coralville Central				Twain				Garner				Penn			
	Students	Sections	Avg. Class Size		Students	Sections	Avg. Class Size		Students	Sections	Avg. Class Size		Students	Sections	Avg. Class Size
K	49	3	16.3	K	31	2	15.5	K	53	3	17.7	K	90	4	22.5
1st	45	3	15.0	1st	33	2	16.5	1st	41	2	20.5	1st	94	4	23.5
2nd	52	3	17.3	2nd	33	2	16.5	2nd	53	3	17.7	2nd	87	4	21.8
3rd	47	2	23.5	3rd	35	2	17.5	3rd	57	2	28.5	3rd	80	3	26.7
4th	60	2	30.0	4th	28	1	28	4th	60	2	30.0	4th	101	4	25.3
5th	64	3	21.3	5th	28	1	28	5th	61	2	30.5	5th	79	3	26.3
	317	16	19.8		188	10	18.8		325	14	23.2		531	22	24.1
Grant				Lucas				Lemme				Van Allen			
	Students	Sections	Avg. Class Size		Students	Sections	Avg. Class Size		Students	Sections	Avg. Class Size		Students	Sections	Avg. Class Size
K	49	3	16.3	K	36	2	18.0	K	49	3	16.3	K	51	3	17.0
1st	58	3	19.3	1st	31	2	15.5	1st	48	2	24.0	1st	46	3	15.3
2nd	57	3	19.0	2nd	34	2	17.0	2nd	56	3	18.7	2nd	47	2	23.5
3rd	70	3	23.3	3rd	40	2	20.0	3rd	42	2	21.0	3rd	59	3	19.7
4th	60	3	20.0	4th	43	2	21.5	4th	58	2	29.0	4th	57	2	28.5
5th	83	3	27.7	5th	39	2	19.5	5th	61	3	20.3	5th	57	2	28.5
	377	18	20.9		223	12	18.6		314	15	20.9		317	15	21.1

Class size data is from Infinite Campus as of 1/30/26

Elementary WRAM 3

Mann				Wickham				Lincoln			
	Students	Sections	Avg. Class Size		Students	Sections	Avg. Class Size		Students	Sections	Avg. Class Size
K	23	1	23.0	K	45	2	22.5	K	30	2	15.0
1st	31	2	15.5	1st	57	3	19.0	1st	22	1	22.0
2nd	33	2	16.5	2nd	51	2	25.5	2nd	43	2	21.5
3rd	29	1	29	3rd	63	2	31.5	3rd	30	2	15.0
4th	33	1	33	4th	43	2	21.5	4th	38	2	19.0
5th	36	2	18	5th	52	2	26	5th	42	2	21.0
	185	9	20.6		311	13	23.9		205	11	18.6
Shimek				OLP							
	Students	Sections	Avg. Class Size		Students	Sections	Avg. Class Size				
K	31	2	15.5	K							
1st	28	2	14.0	1st							
2nd	22	1	22.0	2nd							
3rd	32	2	16.0	3rd	3	0.5					
4th	37	2	18.5	4th	10	0.5					
5th	26	1	26.0	5/6th	11	1					
	176	10	17.6		24	2					

Kindergarten: 26
 1st and 2nd: 28
 3rd-5th: 32

Class size data is from Infinite Campus as of 1/30/26

QUESTIONS & DISCUSSION