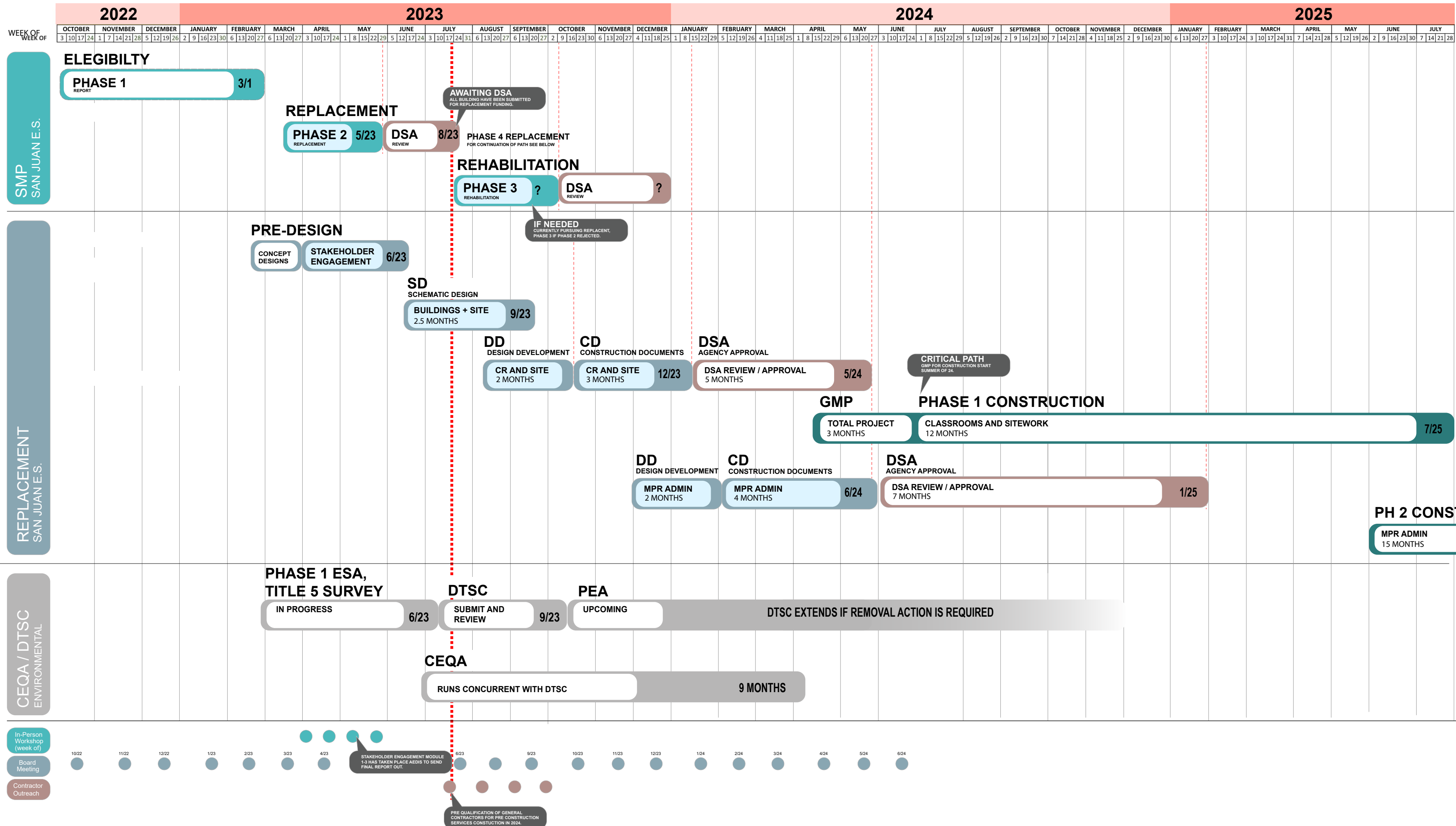




# San Juan School Conceptual Master Plan - Phase 1

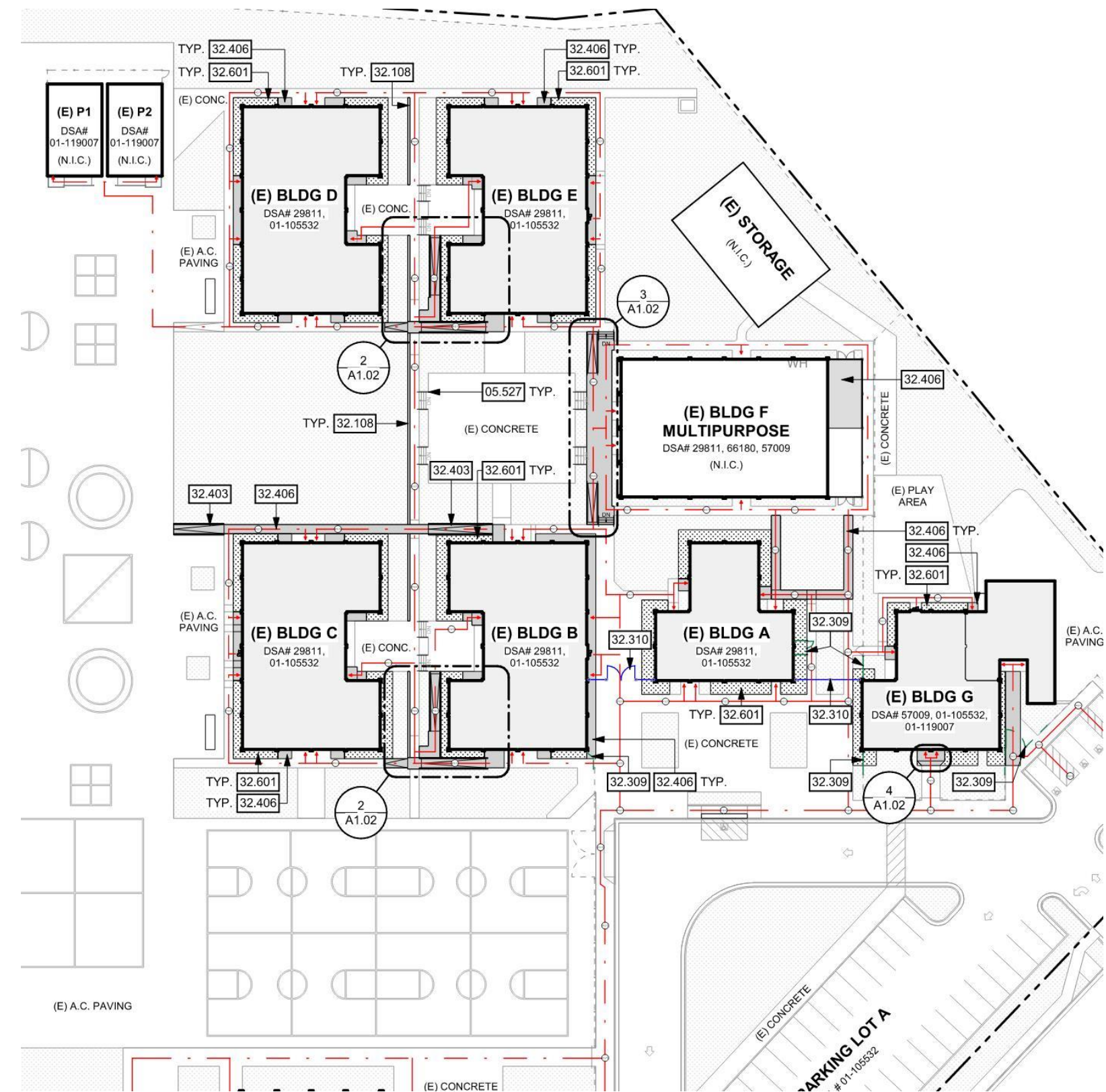


**SAN JUAN SCHOOL CONCEPTUAL MASTERPLAN PRELIMINARY SCHEDULE**  
**AROMAS SAN JUAN UNIFIED SCHOOL DISTRICT**



# SMP – San Juan School

- **Phase 1 – APPROVED - 3/1/23**
- **Phase 2 Submitted 6/1/23**
  - Awaiting DSA comments
  - All building have been submitted for replacement funding.
- **Phase 2 MPR**
  - We have received the report from the original phase 2 concurrence we are working with DSA OPSC and estimator for next steps.



# SMP – San Juan School

CURRENT ESTIMATE		GFA	TOTAL COST	TOTAL COST W/ MARK UP	TOTAL MARK UP W/ SITE	TOTAL \$/GSF W/ MARK UP	% OF REPLACEMENT COST	REPLACEMENT TOTAL \$/GSF
SITE WORK - ADA/ FIRE ALARM		24,600 SF	\$632,986	\$794,339				
NOTE: THE BELOW GSF VALUES INCLUDE THE ADA SITE WORK ALLOCATION (DIVIDED BY 6)								
BUILDING A		2,400 SF	\$704,611	\$884,222	\$1,016,612	\$423.59	89%	\$477.00
BUILDING B		4,950 SF	\$1,316,379	\$1,651,934	\$1,784,324	\$360.47	76%	\$477.00
BUILDING C		4,950 SF	\$1,383,979	\$1,736,765	\$1,869,155	\$377.61	79%	\$477.00
BUILDING D - SEE BLDG 'C' DETAIL		4,950 SF	\$1,383,979	\$1,736,765	\$1,869,155	\$377.61	79%	\$477.00
BUILDING E - SEE BLDG 'C' DETAIL		4,950 SF	\$1,383,979	\$1,736,765	\$1,869,155	\$377.61	79%	\$477.00
BUILDING G		2,400 SF	\$727,254	\$912,636	\$1,045,026	\$435.43	91%	\$477.00

Aromas - San Juan Unified School District  
 Seismic Mitigation Program  
 Working Drawing Estimate



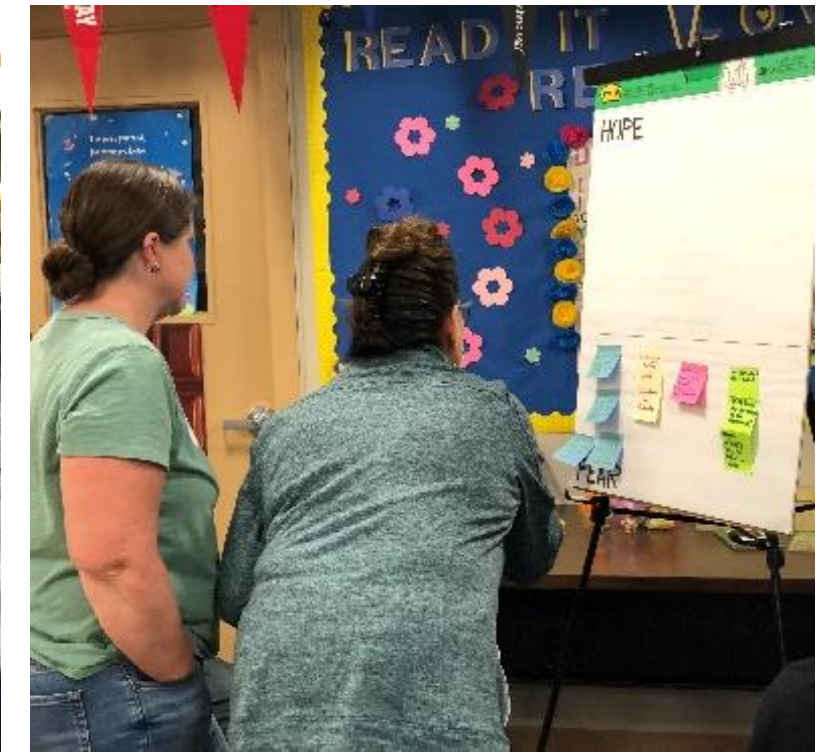
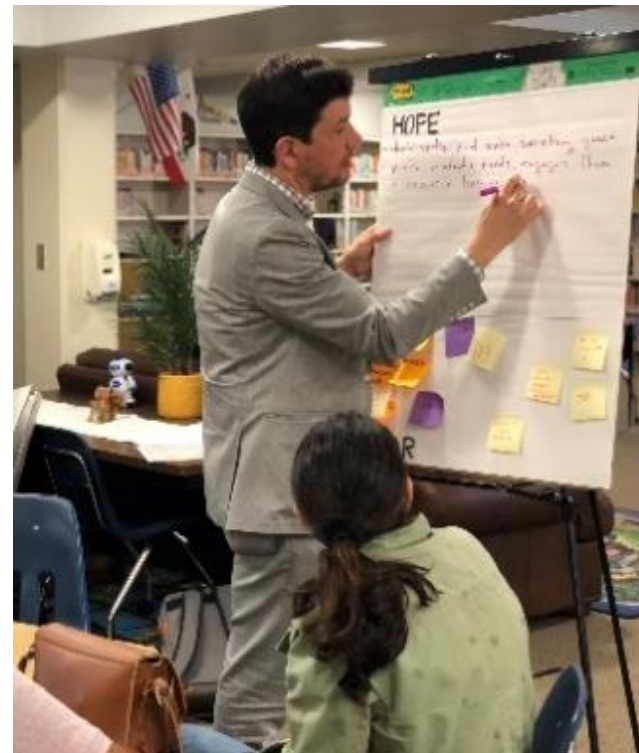
COMPLETE SUMMARY

ARCHITECT: Aedis

GROSS SF: 24,600  
 DATE: 11-May-23

# San Juan School Module 1 Stakeholder Engagement

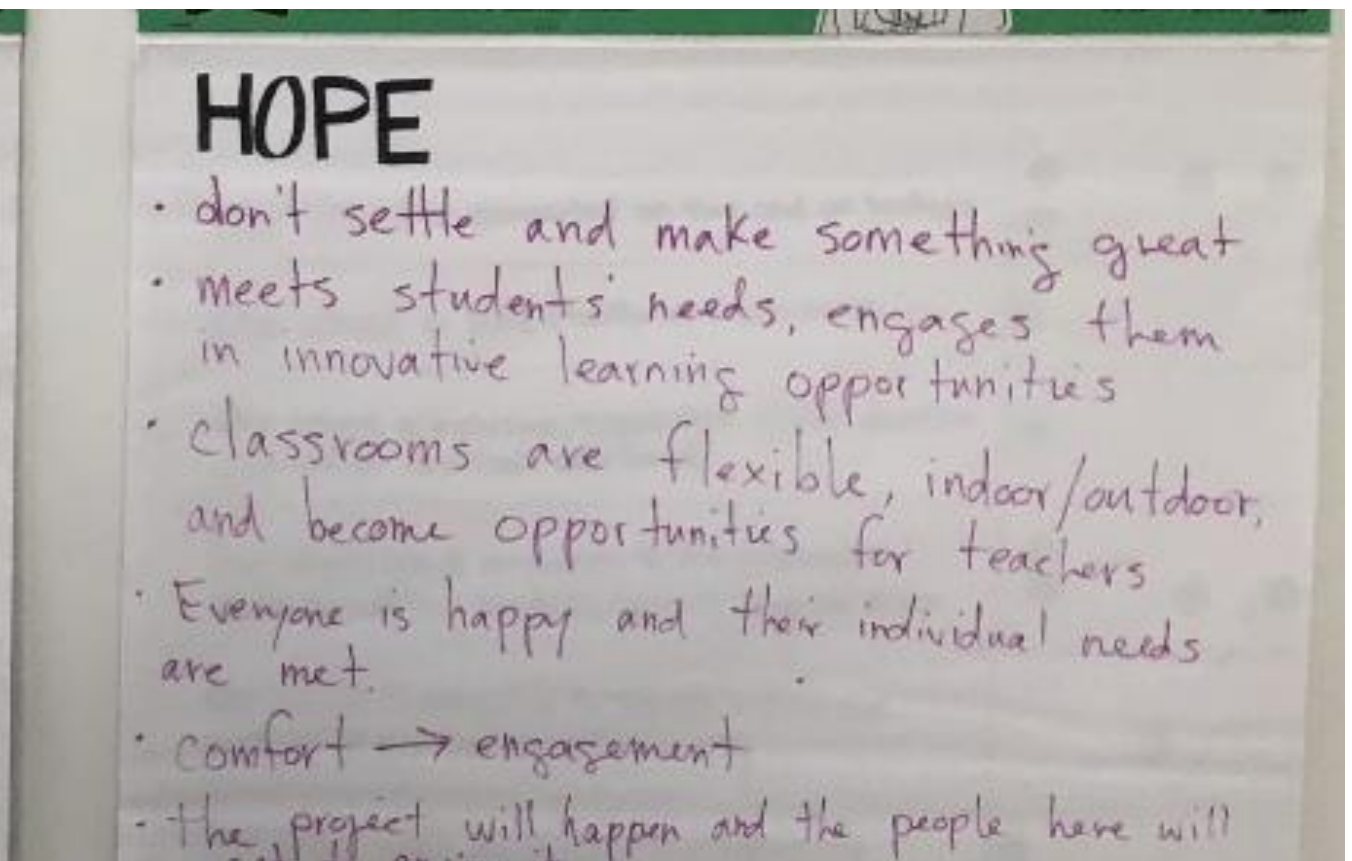
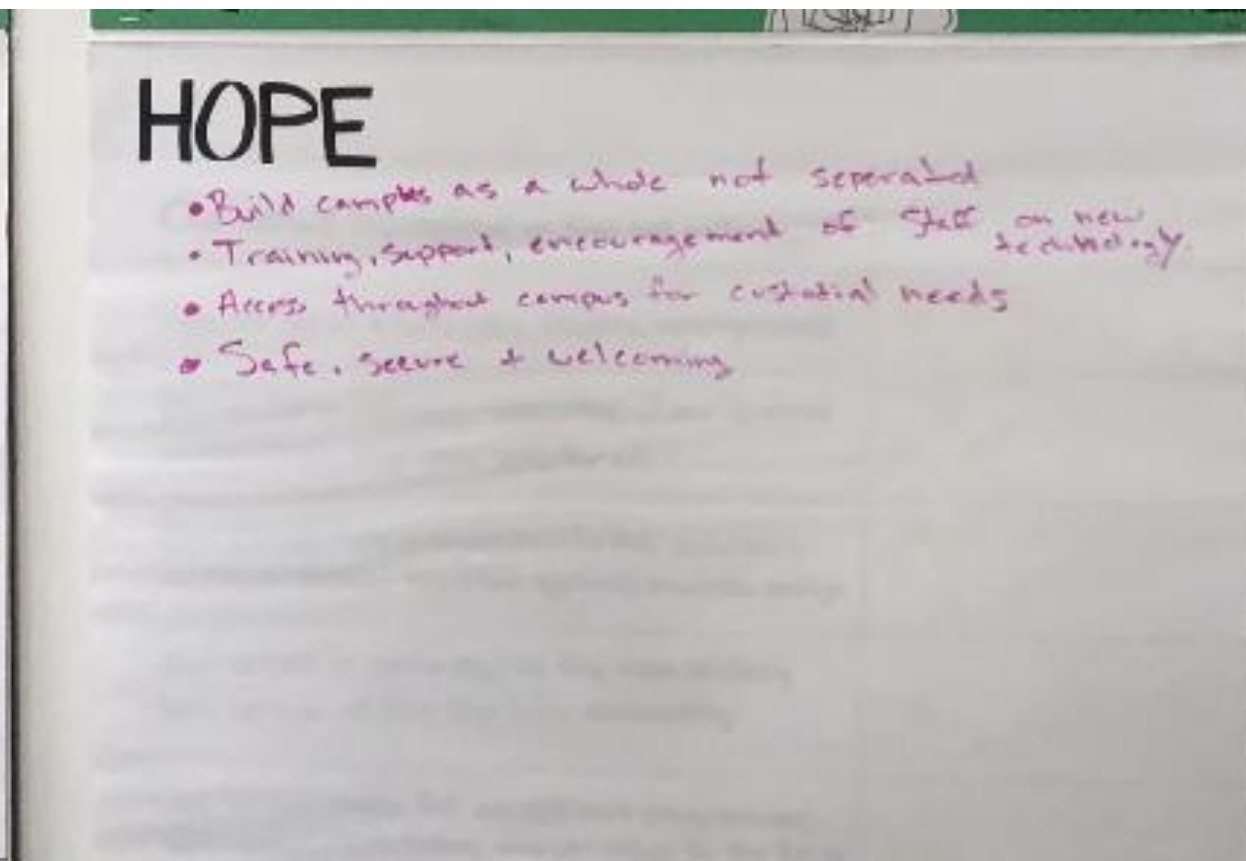
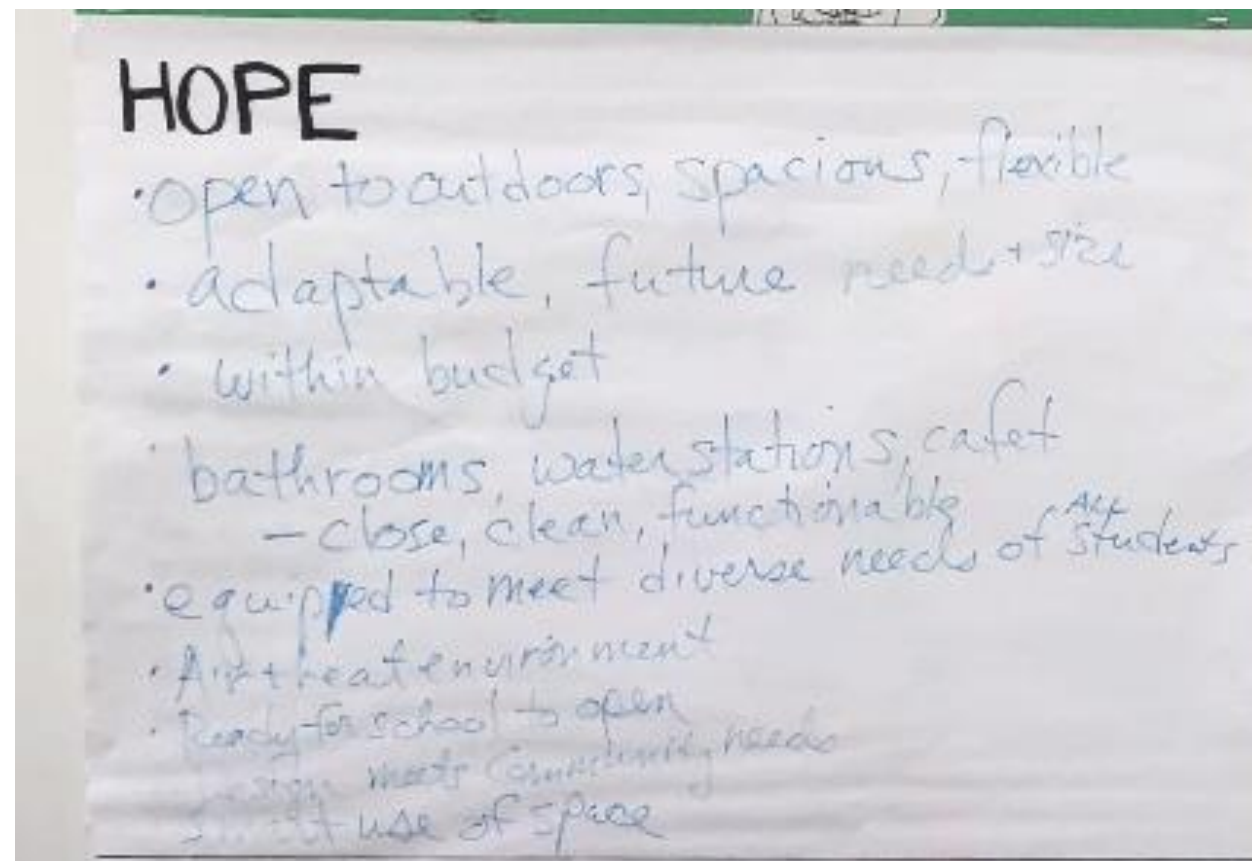
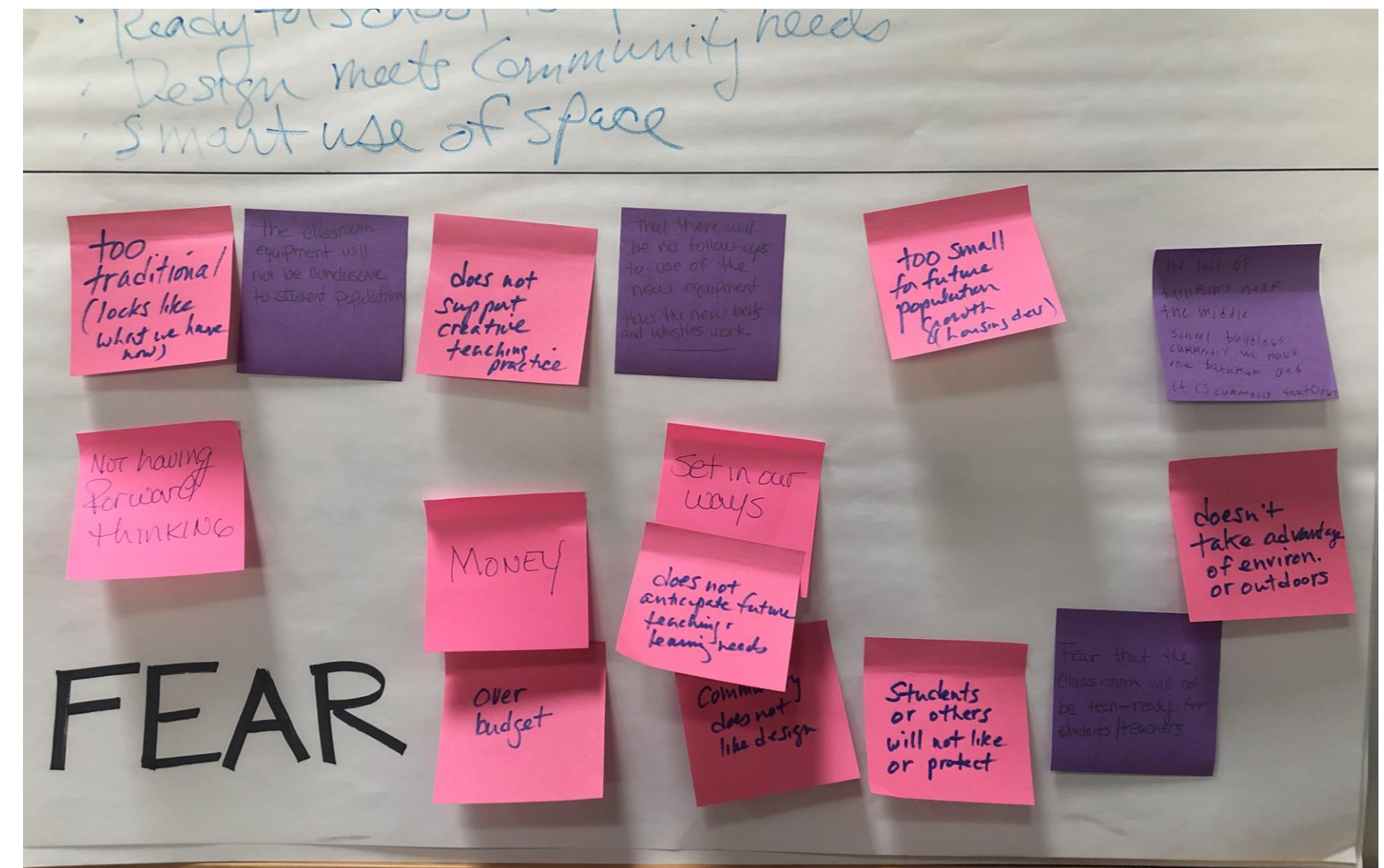
- Design Thinking
  - Hopes and Fears
  - Empathy Interviews
  - Guiding Principals



# San Juan School Module 1 Stakeholder Engagement

## Hopes and Fears

- Establish goals for the project.
- Understand concerns



# San Juan School Module 1

## Stakeholder Engagement

### Empathy Interviews: Memorable Learning Experience

-What makes an Ideal learning experience

#### 3 Capture findings 3 min

**Needs: what is needed to re-create the experience**  
List characteristics of the experience:  
(emotional, physical sensation, thoughts)...

- large open working room
- Teachers with solid knowledge of content.

→ relevant materials / Teachers know how to use and create with them

List the physical attributes that supports the experience

- Teachers **excited** about teaching the content.
- **engaging** students in their learning
- expressing **excitement** in their accomplishment

#### 4 Define the essence of the Experience 3 min

Summarize your findings

Name \_\_\_\_\_ needs: (physical attributes)

1. Teachers interested in Topic
2. Teachers/Student **excited** about accomplishment
- 3.
- 4.

Because // so // as to...

- 1.
- 2.
- 3.
- 4.

Describe your most memorable learning experience.

## 1-2 Empathize

#### 1 Interview

4 min (2 sessions x 2 minutes each)

Notes from your first interview

- play
- specializing: music, acting, painting
  - **collaborative** → but individual contributions
  - can do even what you're not good at
  - present for parents at open house
  - **different learning modalities**
  - **problem-solving, student-centered**

Switch roles & repeat Interview 1.

#### 2 Dig Deeper

4 min (2 sessions x 2 minutes each)

Notes from your second interview

- lack of focus, talking, not getting things done
- put work first
- acting/memorizing, painting background making props/costumes
- choice
- learning collaboration, teamwork

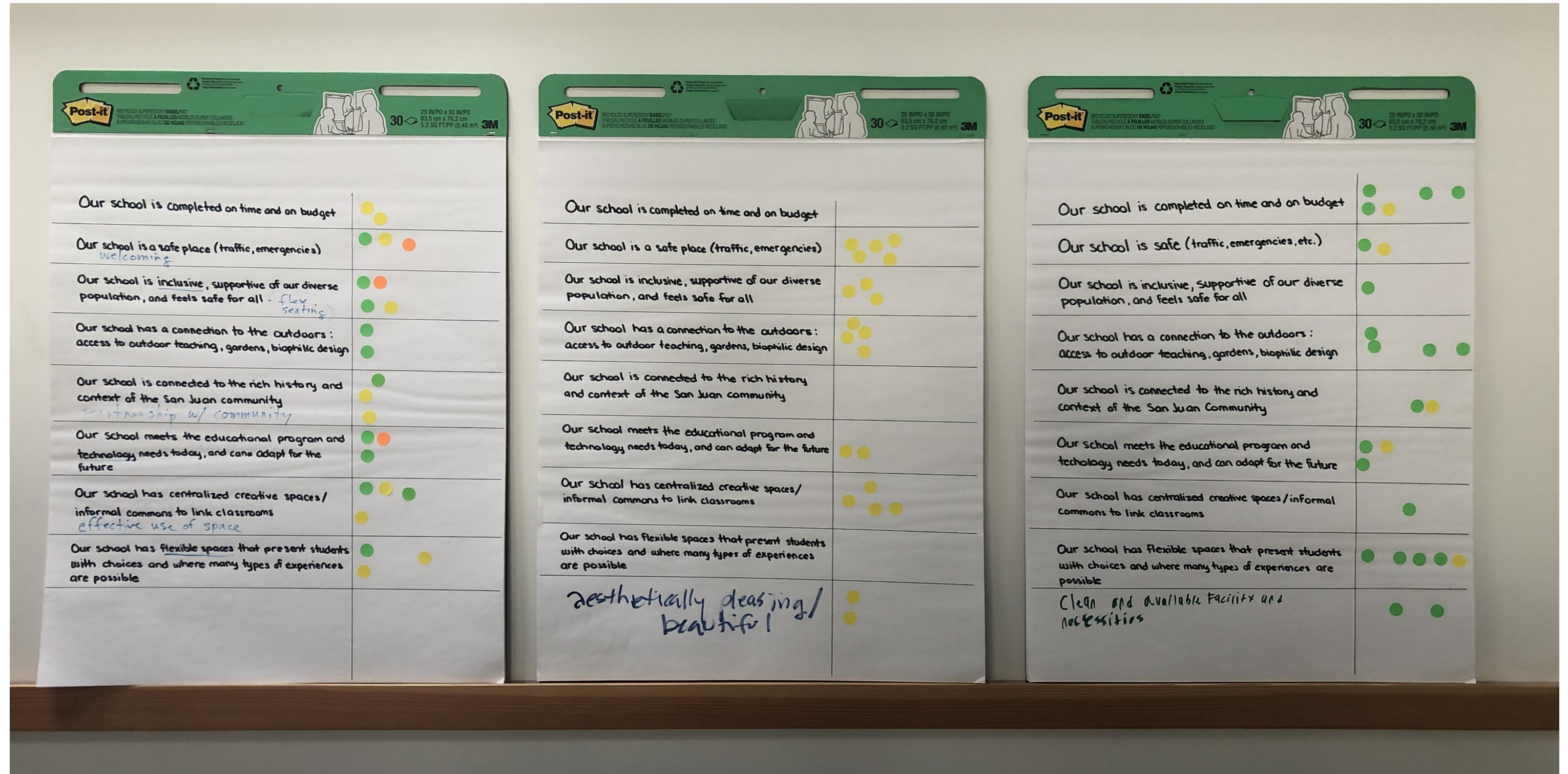
Switch roles & repeat Interview 2.



# San Juan School Module 1

## Stakeholder Engagement

### Guiding Principals:



SAN JUAN GUIDING PRINCIPLES	CHARACTERISTICS OF A MEMORABLE LEARNING EXPERIENCE
<p><b>Our school is a physically safe place</b></p>	<p>TRUSTING ENVIRONMENT            CONFIDENCE            SUPPORTIVE, CARING PEOPLE            POSITIVE            PROVIDE SAFE AND STABLE ENVIRONMENTS            ENGAGED – EXCITED – MOTIVATED – FUN            TRUST            HAPPY            COMFORTABLE            SAFE</p>
<p><b>Our school has a connection to the outdoors</b></p>	<p>INTERACTIVE            POSITIVE            ENGAGED – EXCITED – MOTIVATED – FUN            HAPPY            DIFFERENT LEARNING STYLE / ALTERNATIVE LEARNING            COLLABORATIVE - TEAMWORK            ACTIVE            HANDS ON LEARNING EXPERIENCE            MOVEMENT            FLEXIBLE LEARNING ENVIRONMENT            NATURE            LEARNING OUTSIDE            COMFORTABLE</p>
<p><b>Our school has centralized creative spaces/informal commons to link classrooms</b></p>	<p>INTERACTIVE            POSITIVE            ENGAGED – EXCITED – MOTIVATED – FUN            COLLABORATIVE TEAMWORK            HANDS ON LEARNING EXPERIENCE            FLEXIBLE LEARNING ENVIRONMENT            ABILITY TO DISPLAY WORK / BROADCAST IDEAS            COLLABORATIVE TEAMWORK            CREATIVE            STUDENT CENTERED</p>

## SAN JUAN GUIDING PRINCIPLES

## CHARACTERISTICS OF A MEMORABLE LEARNING EXPERIENCE

**Our school is inclusive, supportive of our diverse population, and feels safe for all**

TRUSTING ENVIRONMENT  
CONFIDENCE  
GROWTH MINDSET  
SUPPORTIVE, CARING PEOPLE  
POSITIVE  
PROVIDE SAFE AND STABLE ENVIRONMENTS  
TRUST  
HAPPY  
GROWTH OPPORTUNITY  
COMFORTABLE  
SAFE

**Our school has flexible spaces that present students with choices and where many types of experiences are possible**

RISK TAKING  
GROWTH MINDSET  
INTERACTIVE  
ENGAGED – EXCITED – MOTIVATED – FUN  
FOCUS  
HAPPY  
GROWTH OPPORTUNITY  
DIFFERENT LEARNING STYLE / ALTERNATIVE LEARNING  
COLLABORATIVE TEAMWORK  
HANDS ON LEARNING EXPERIENCE  
PROBLEM SOLVING  
STUDENT CENTERED  
INNOVATIVE  
CREATIVE  
FLEXIBLE LEARNING ENVIRONMENT  
ABILITY TO DISPLAY WORK / BROADCAST IDEAS  
CONFIDENCE  
QUIET SPACES  
COMFORTABLE

**Our school meets the educational program and technology needs today, and can adapt for the future**

INTERACTIVE  
GROWTH OPPORTUNITY  
HANDS ON LEARNING EXPERIENCE  
PROBLEM SOLVING  
INNOVATIVE  
CREATIVE  
ABILITY TO DISPLAY WORK / BROADCAST IDEAS

# San Juan School Module 2

## Stakeholder Engagement

### Primordial Spaces

- How do these primordial spaces apply to everyday learning environments?



**Caves:** Here you withdraw to be alone with your thoughts, reflect and make connections.



**Campfires:** Here you share stories, exchange ideas, and allow the group to build on each others' ideas.



**Sandpits:** Here you play, prototype and experiment.



**Watering Holes:** Here you come together to exchange ideas and cross pollinate.



**Mountain Tops:** Here you celebrate and share your learning, from "one to many." You "sing it from the mountaintop."



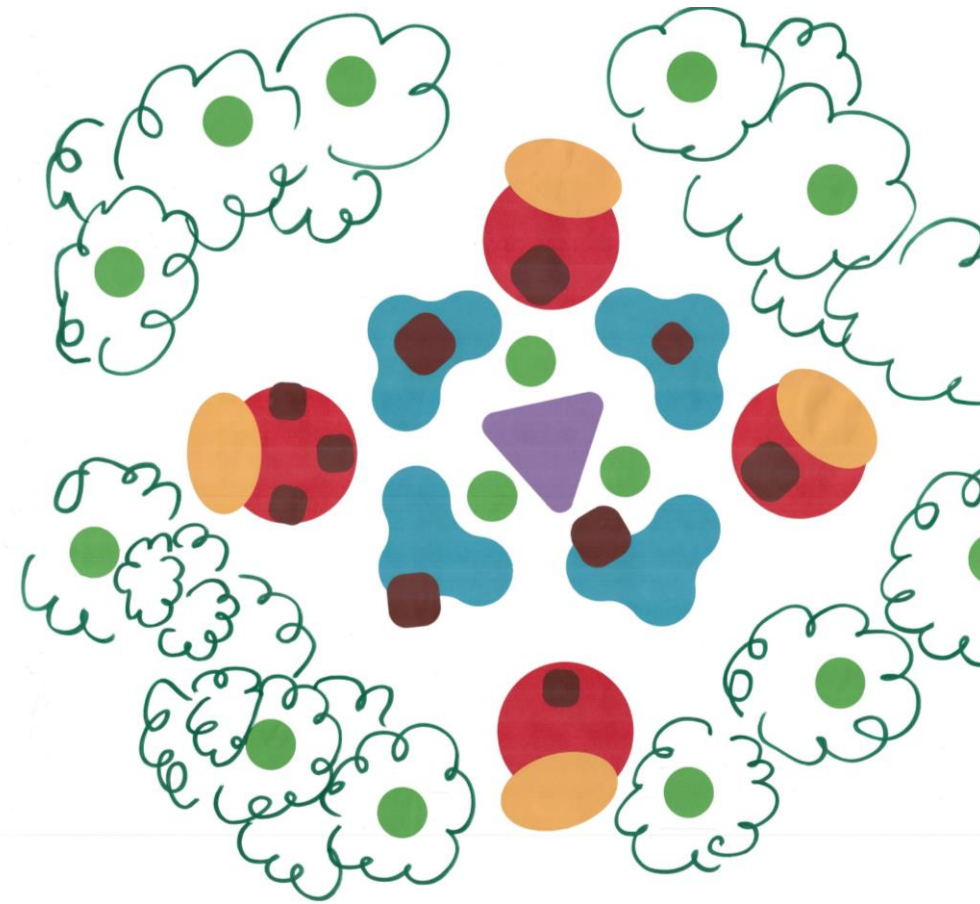
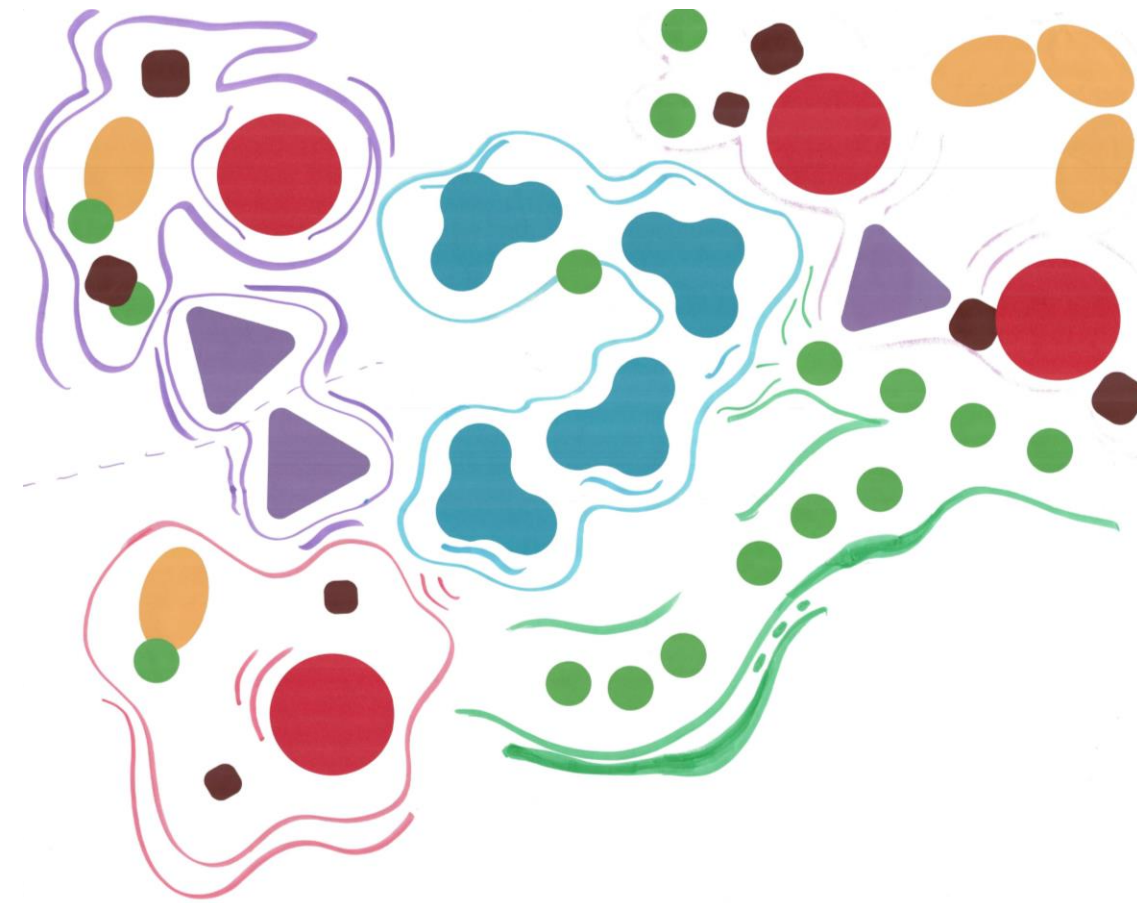
**Life:** Here you learn by being. The entire campus is the "Life" space, connected to nature, and relevant to learner's lives.

# San Juan School Module 2

## Stakeholder Engagement

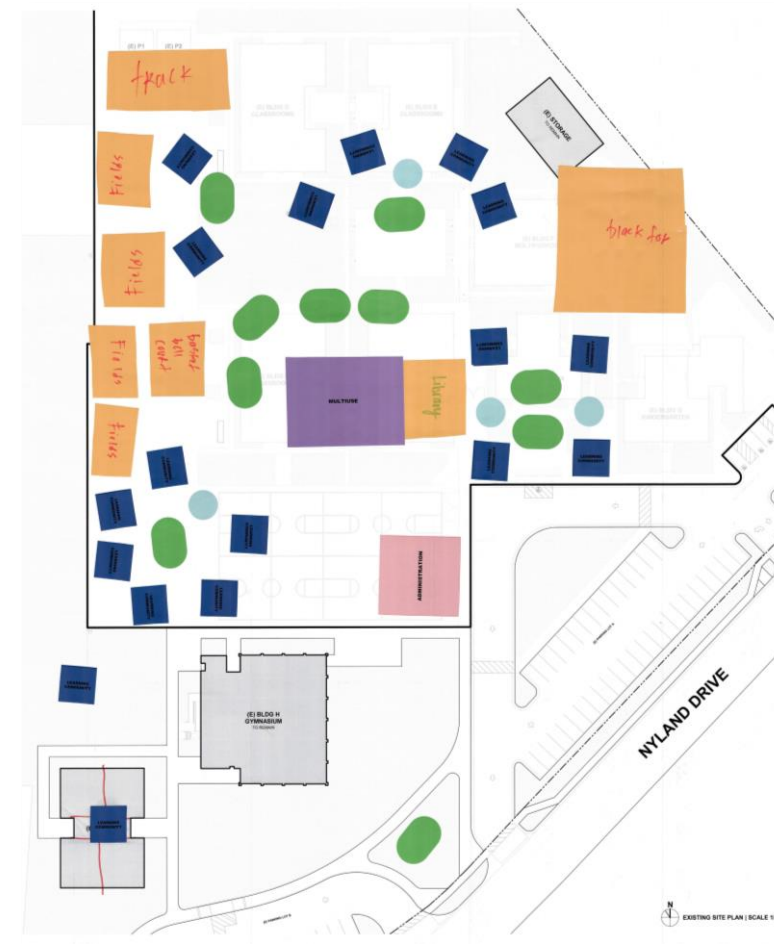
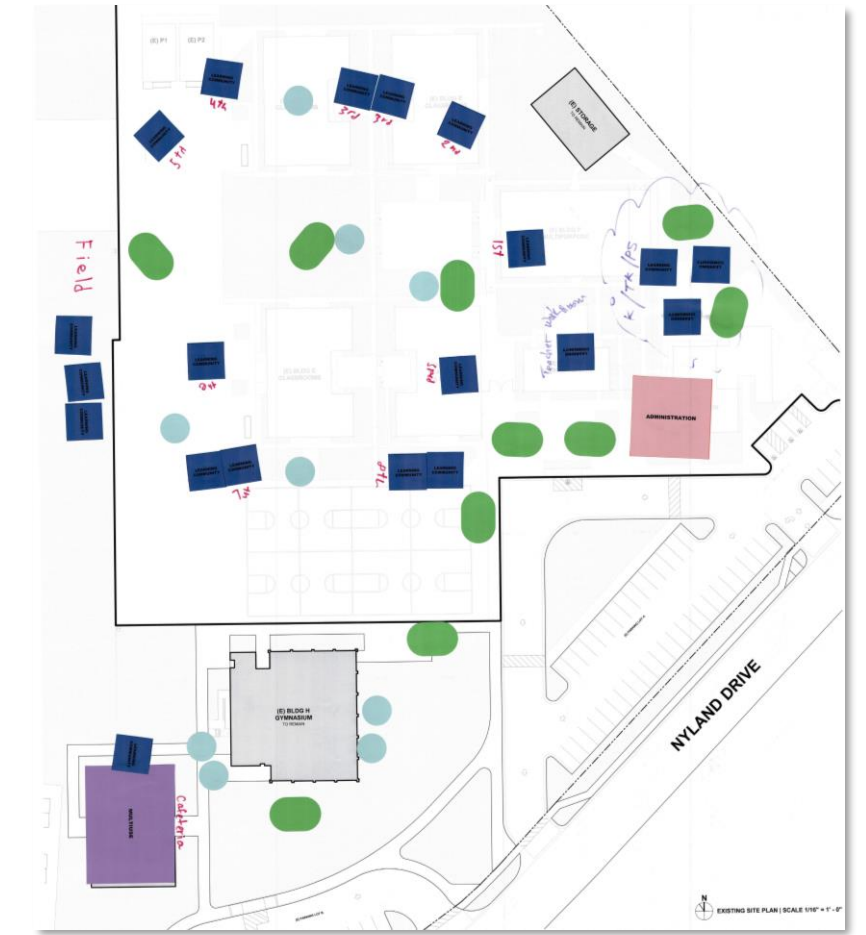
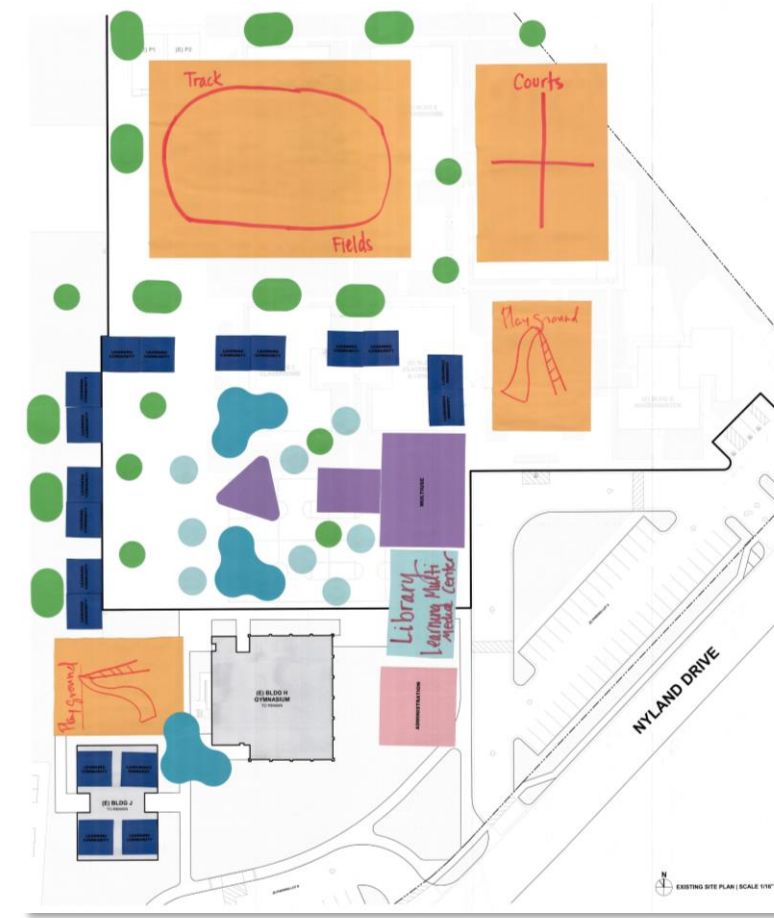
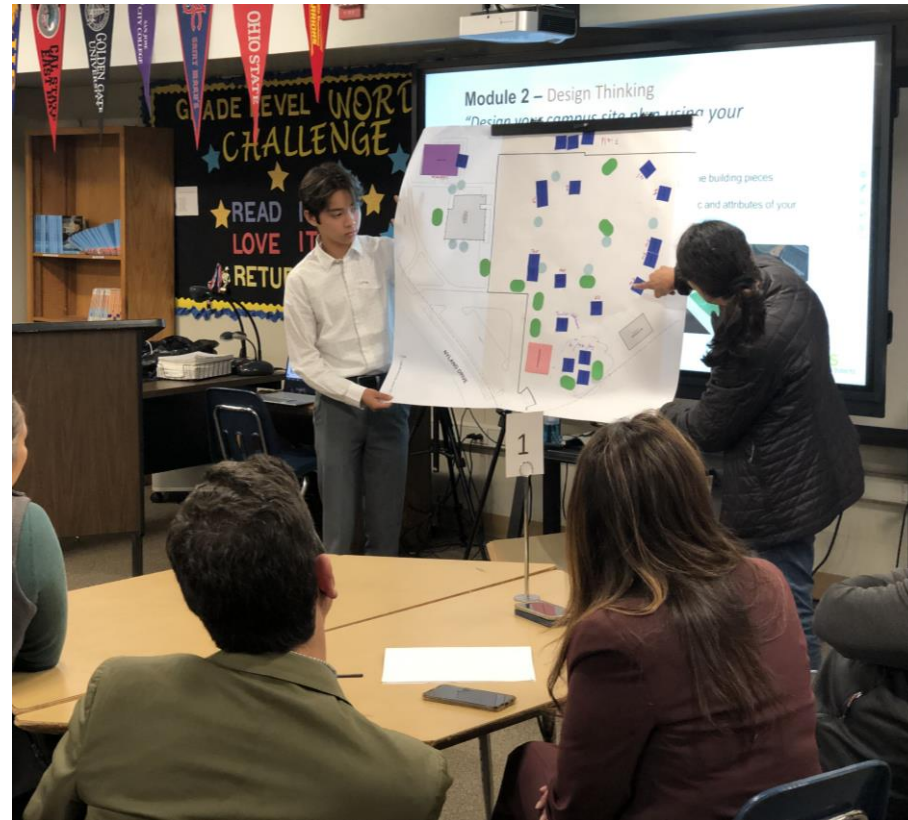
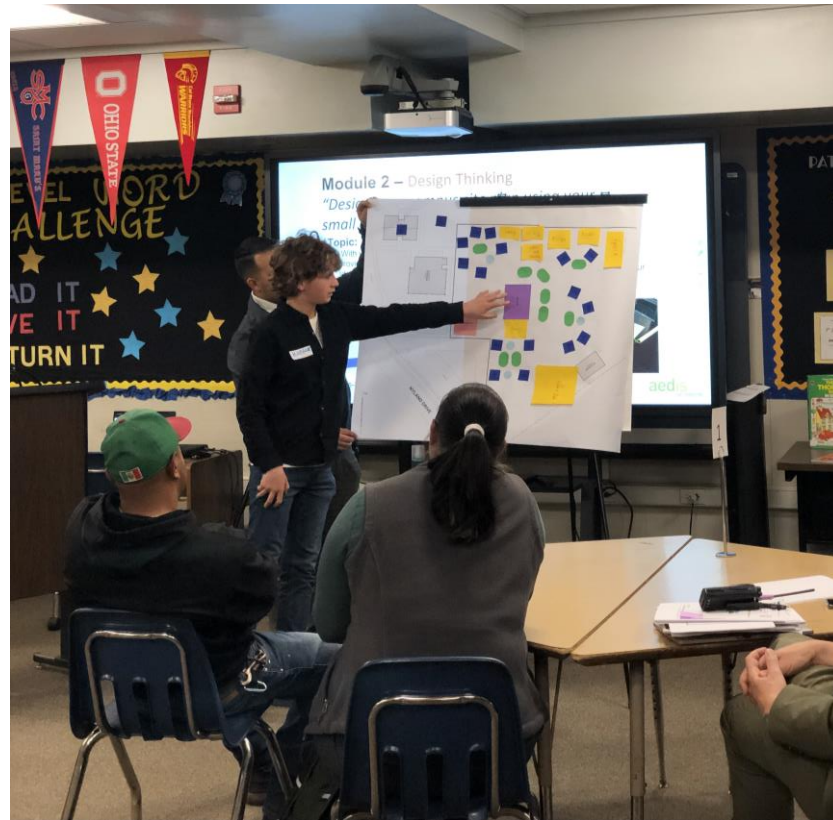
### Ideal Learning Environment

- **Task: Use Primordial spaces to create the Ideal Learning Environment**



# San Juan School Module 2 Stakeholder Engagement Conceptual Site Plans

- **Task: Use the concepts of Primordial Spaces and the San Juan site plan to create a campus layout with your Ideal Learning Environment**



# San Juan School Module 3

## Stakeholder Engagement

### Inspirational Idea Boards

Finding solutions that represent concepts behind our Guiding Principals

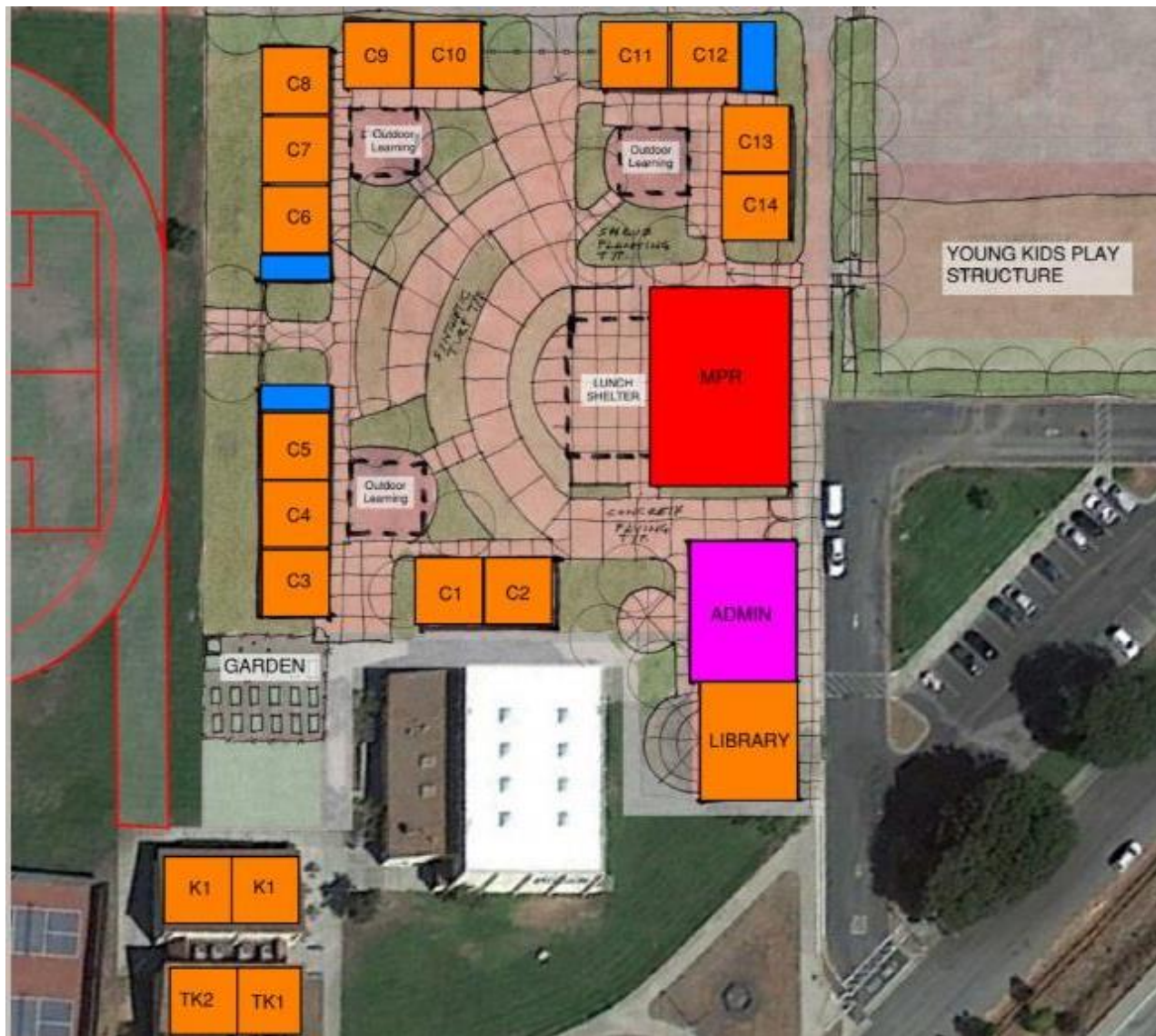


# San Juan School Module 3

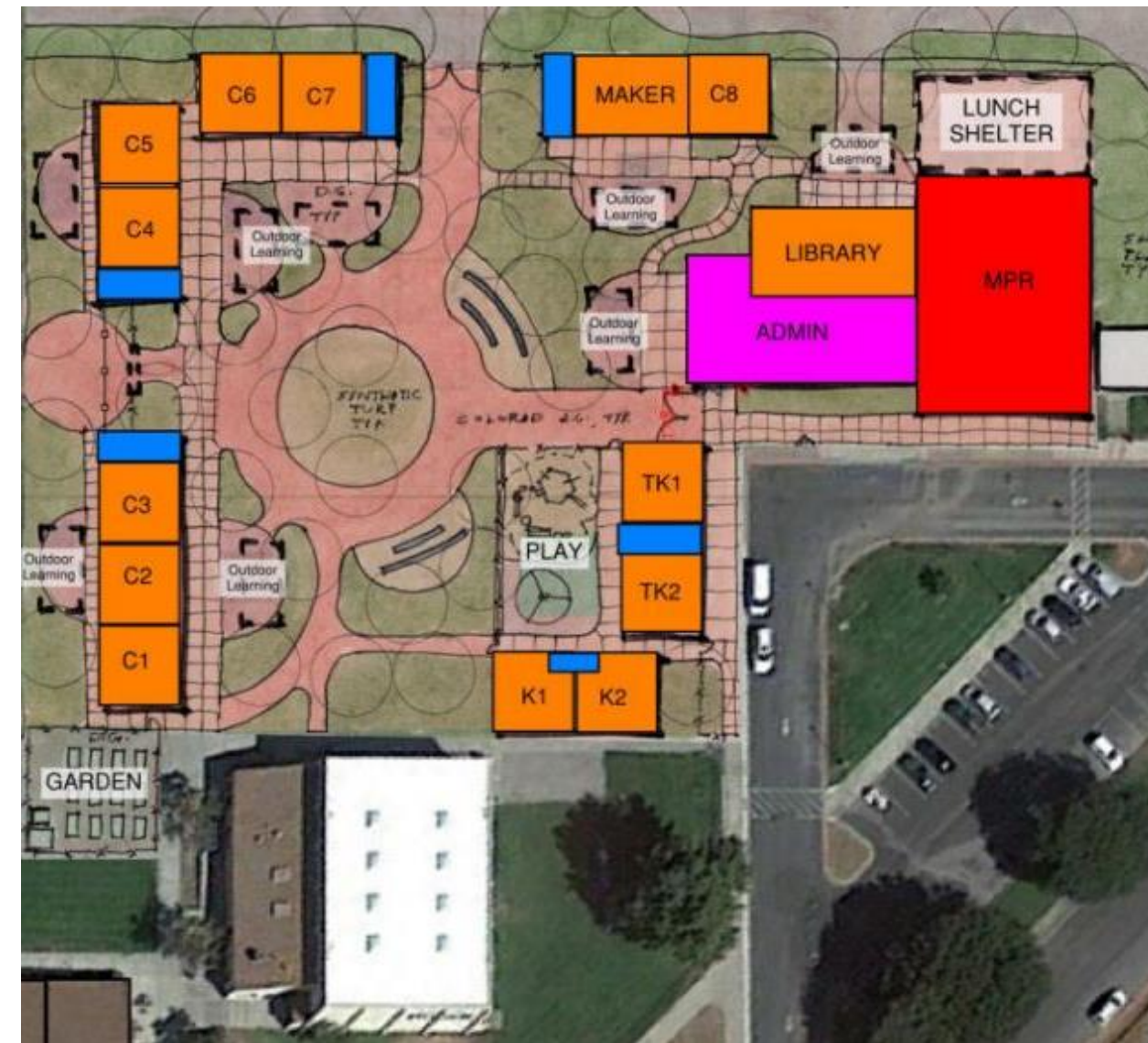
## Stakeholder Engagement

### Conceptual Site Plans

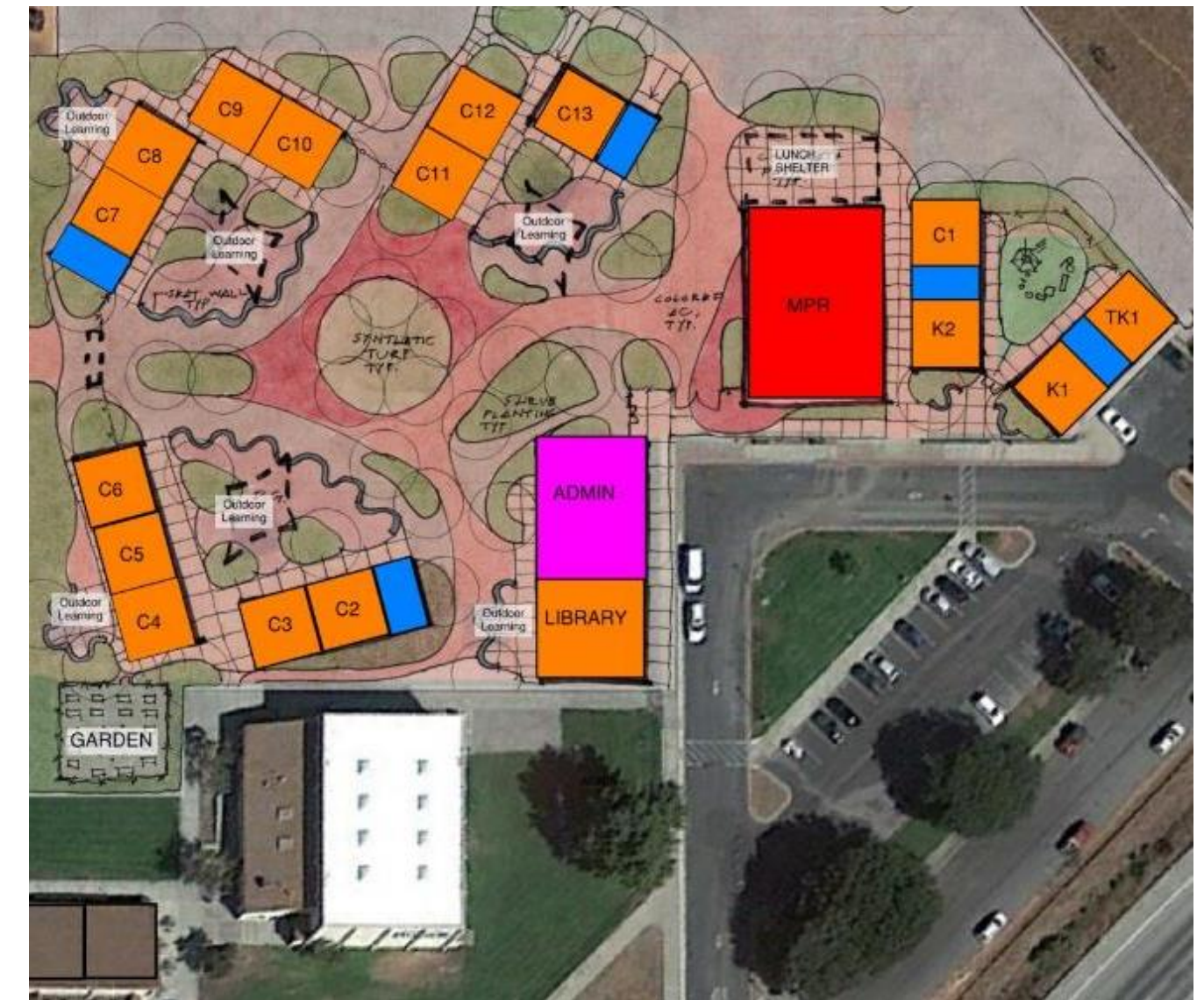
OPTION 1



OPTION 2



OPTION 3



# San Juan School Module 3

## Stakeholder Engagement

### Conceptual Site Plan

- Majority of Committee favored this option
- Classrooms non-linear layout
- Centered around a quad.
- Main entry at center of Campus
- Kinder and TK have own area.
- Gym and 7<sup>th</sup> & 8<sup>th</sup> buildings remain



# San Juan School Module 3 Stakeholder Engagement

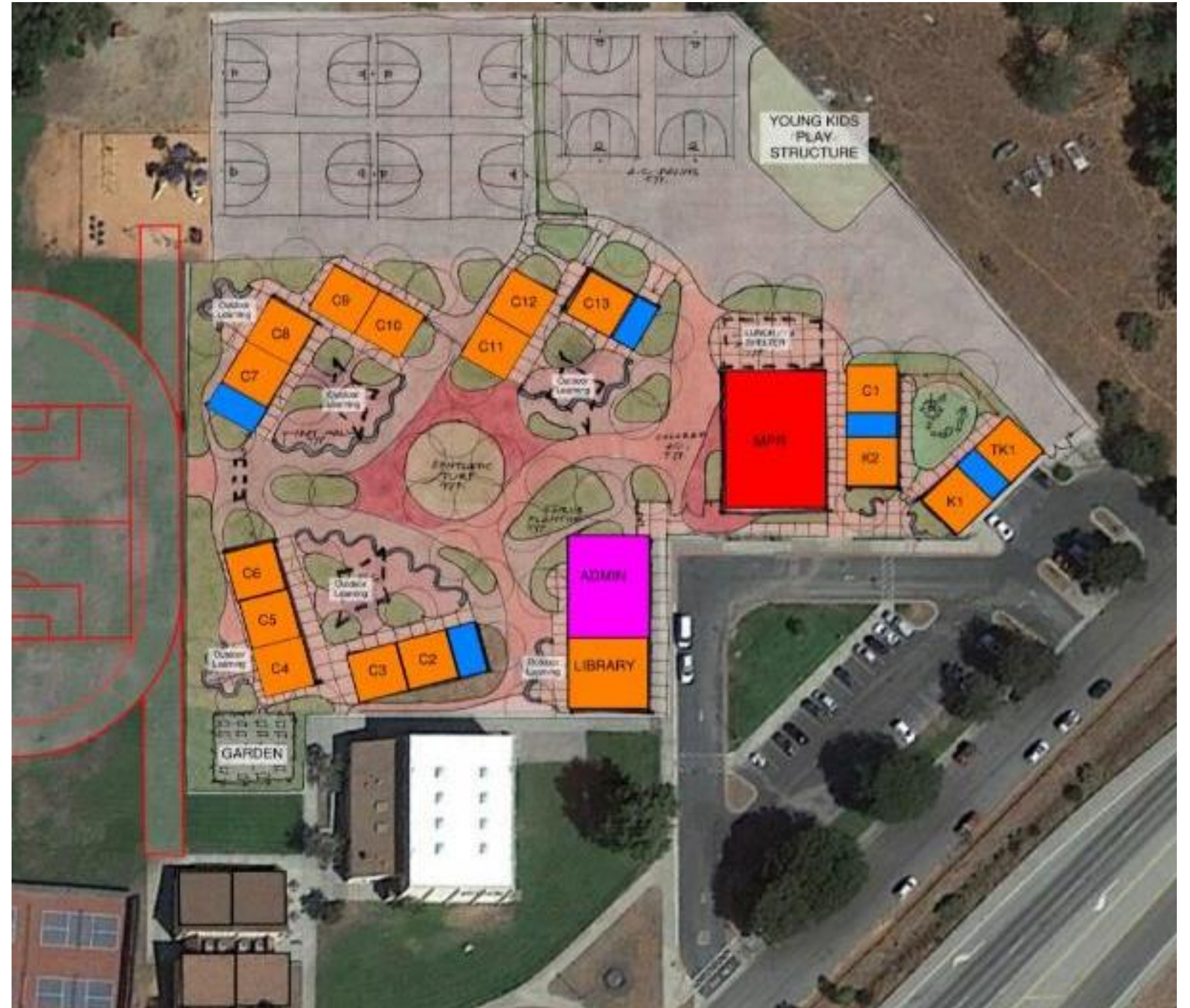
## Conceptual Site Plan Discussion

- Relocate Kinder (if there is enough room)
- Longer Drop-off desired
- Basketball courts used by the community
- Additional Student Gardens
- Upper Grade Play Structure desired
- Middle school students integrated with lower grades.

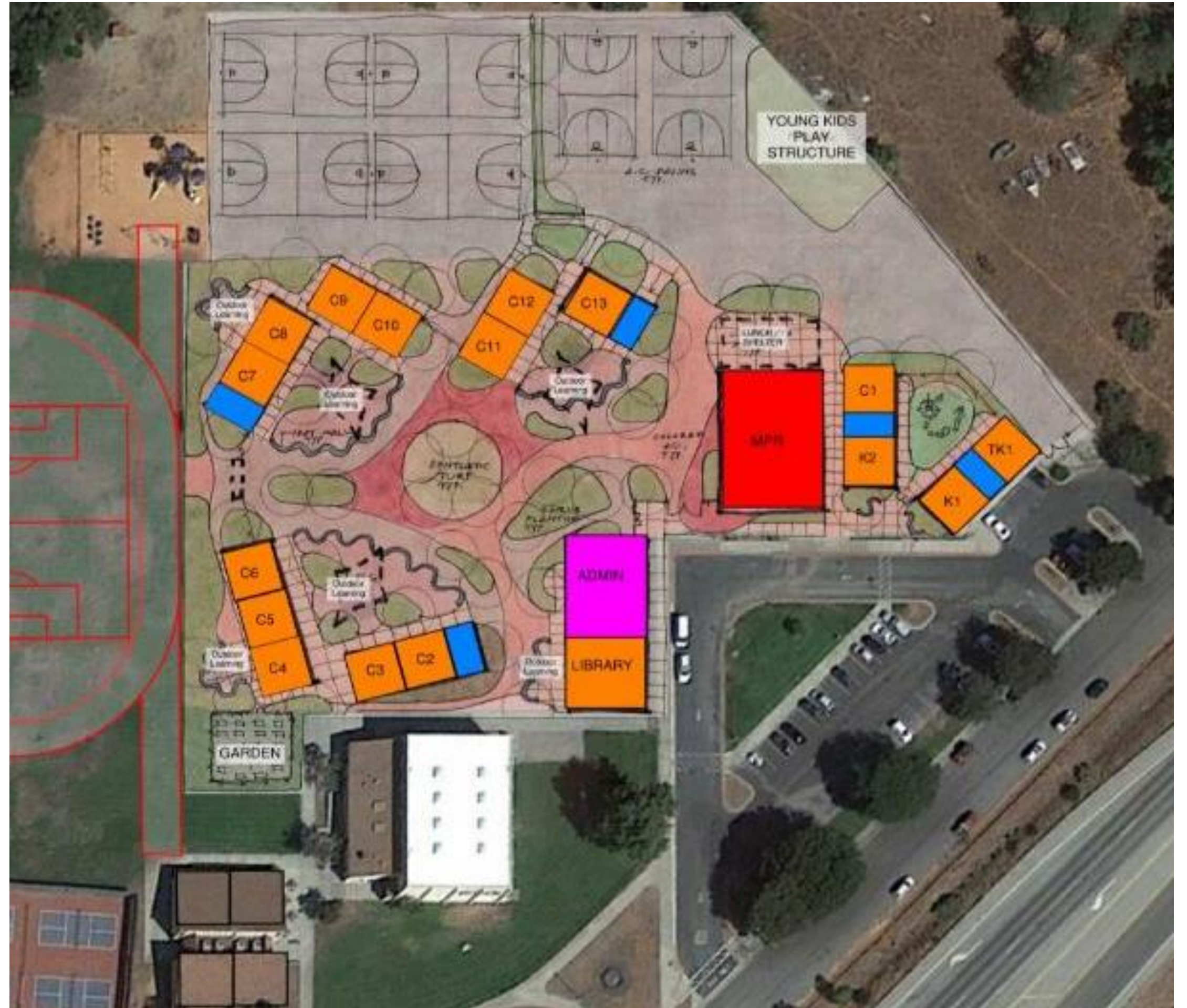


# NEXT STEPS

- **Phase 2 MPR** Update the Phase 2 concurrence
- **PHASE 2 (A,B,C,D,E, G)** – DSA/OPSC comments or concurrence
- **San Juan-** Conceptual Site Design
- Present to Board of Trustees and Full Site Staff
- **Contractor** – Bring on board LLB contractor.



# Questions Regarding San Juan?



# Aromas and Anzar HVAC

- Anzar DSA comments receive 6/1  
-replying to comments and scheduling backcheck appointment.
- Aromas DSA comments receive 6/1  
-replying to comments and scheduling backcheck appointment  
-DSA will not issue stamped drawings until the district closes out a past application for this site. The District/Aedis are working to close out the old project.





**THANK YOU!**

# San Juan School Conceptual Master Plan - Phase 1

---