



Capital Improvement Plan Swing Space

Oct 12, 2016

Joe Desormeaux, Assistant Superintendent for Facilities

Current Plan

| Swing Sites | 18-19 | 19-20 | 20-21 | 21-22 |
|------------------------|--------------|--------------|-------------|-------------|
| Spring Forest | Stough | North Ridge | Conn | TBD |
| E-24 | Construction | York | E-24 | E-24 |
| York | York | Renovation | York | York |
| Conn | Conn | Conn | Renovation | Conn |
| Stough | Renovation | Stough | Stough | Stough |
| Wiley | Renovation | Wiley | Wiley | Wiley |
| North Ridge | North Ridge | Renovation | North Ridge | North Ridge |
| Garner 9 th | Wiley | SNAP/PD | SNAP/PD | SNAP/PD |
| 1820 Capital | Construction | Construction | New HS | New HS |

Swing Location Categories

- **BOE Owned/Future Construction**
 - **Spring Forest, Garner 9th, 1820 Capital, E24**

Swing Location Categories

- BOE Owned/Future Construction
 - Spring Forest, Garner 9th, 1820 Capital, E24
- **BOE Owned/May Require Extending Swing Period For Host School**
 - **Brooks, Stough, Conn, Wiley, York**

Swing Location Categories

- BOE Owned/Future Construction
 - Spring Forest, Garner 9th, 1820 Capital, E24
- BOE Owned/May Require Extending Swing Period For Host School
 - Brooks, Stough, Conn, Wiley, York
- **Potential Swing Space Sites if available for Lease**
 - **Vacant land, Churches, Retail, Office Building**

Swing Location Categories

- BOE Owned/Future Construction
 - Spring Forest, Garner 9th, 1820 Capital, E24
- BOE Owned/May Require Extending Swing Period For Host School
 - Brooks, Stough, Conn, Wiley, York
- Potential Swing Space Sites if available for Lease
 - Vacant land, Churches, Retail, Office Building
- **Reassign school membership to surrounding schools during renovation**

Transportation

- Limiting distance from school to swing space will mitigate travel impact.....
- For many students.....
- Students coming from all directions
- Students coming in different formats
- Base students that are currently walkers
- Magnet students with neighborhood stops
- Magnet students with express stops
- Magnet students with parent provided transportation
- It's complicated.....let's look at each school.....

North Ridge ES Swing Space Options

N RIDGE ES

SPRING FOREST

*Base/Application Area &
Transportation Pattern*

Legend

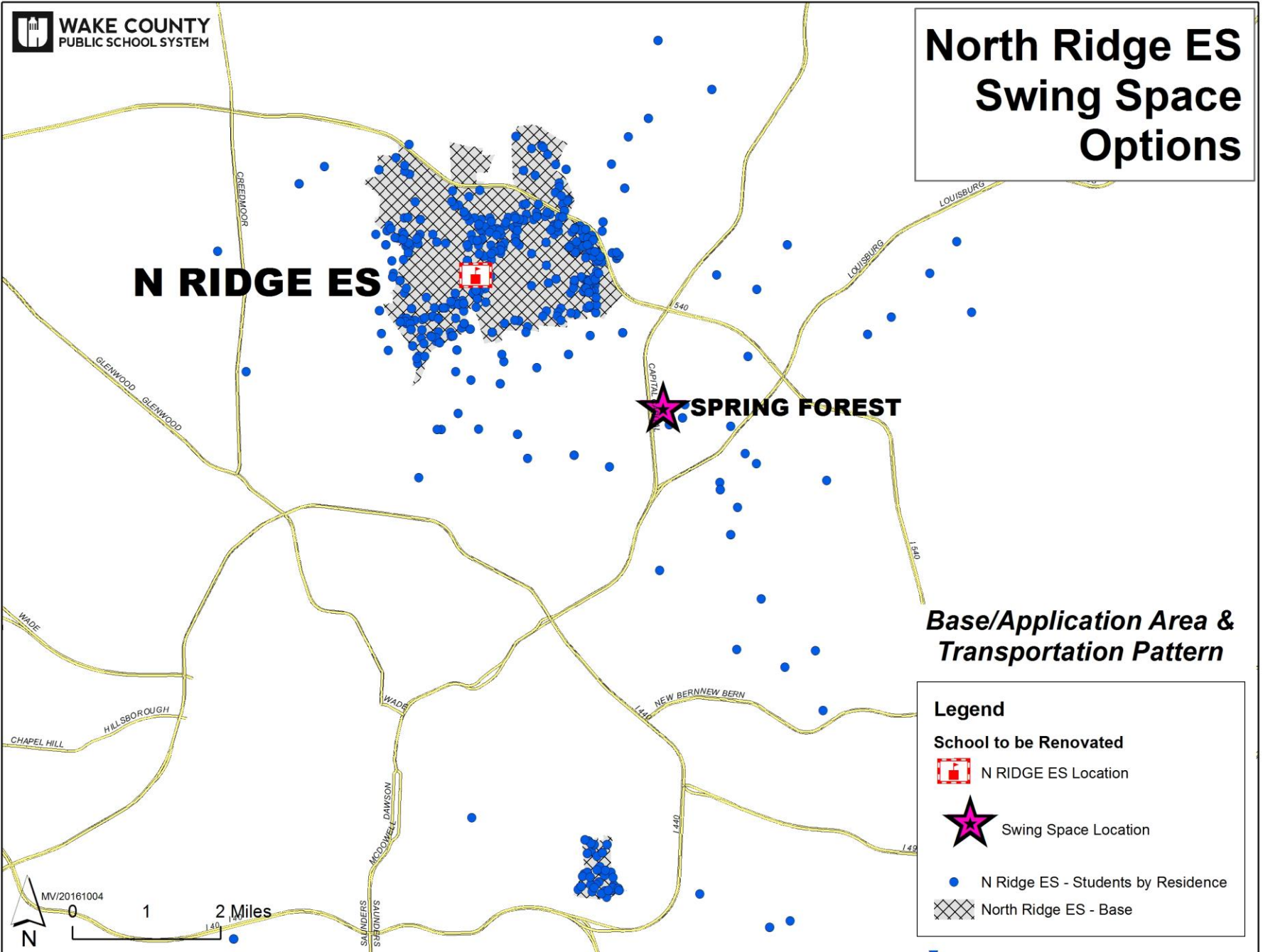
School to be Renovated

 N RIDGE ES Location

 Swing Space Location

 N Ridge ES - Students by Residence

 North Ridge ES - Base



Closer Sites

| School | BOE Owned/Future | Requires Extending Swing |
|----------------|-----------------------|--------------------------|
| North Ridge ES | Spring Forest Modular | N/A |
| | | |
| | | |
| | | |
| | | |

Original plan remains closest site – mileage 4.4 minutes 14

Base/Application Area & Transportation Pattern

Legend

School to be Renovated



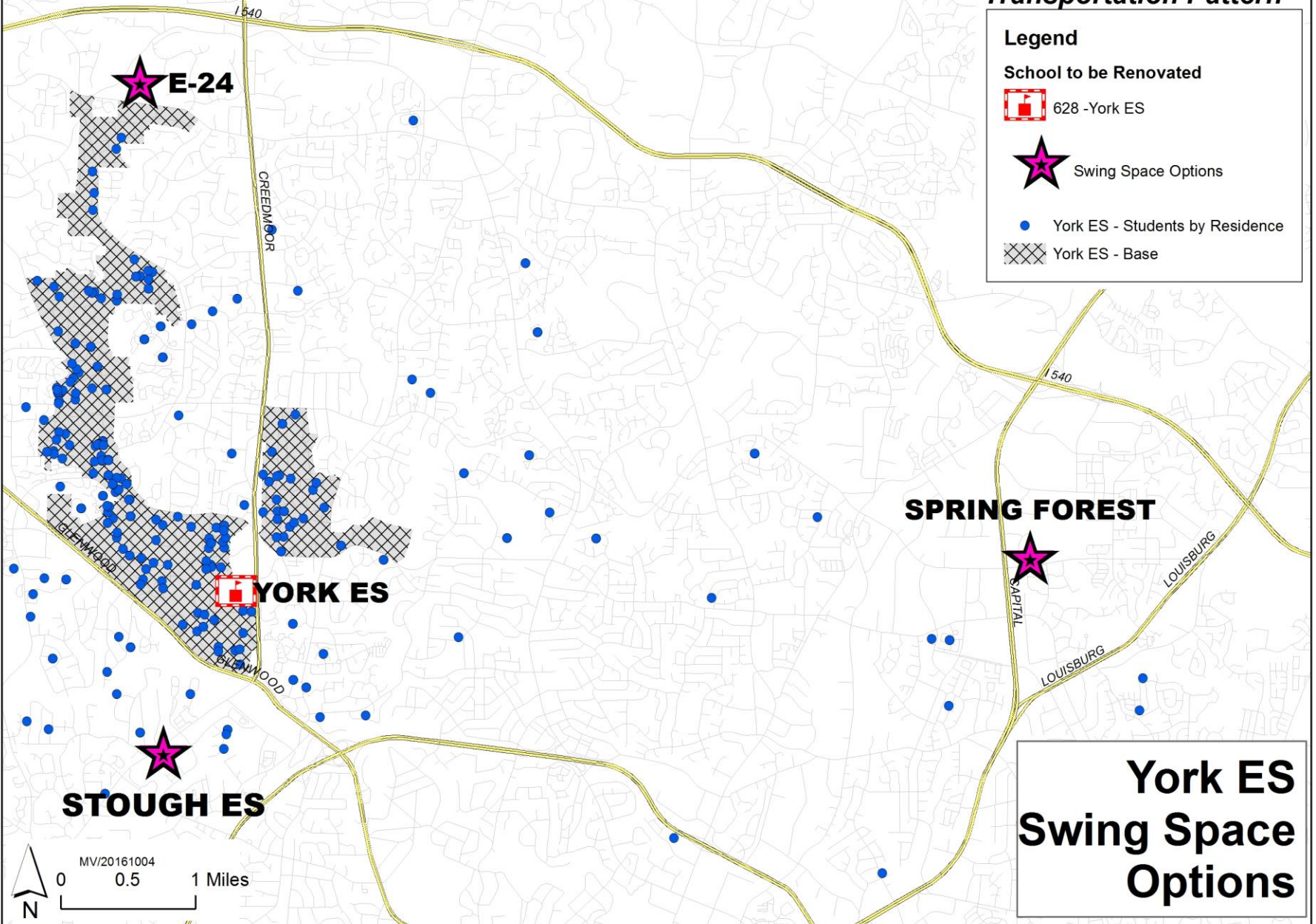
Swing Space Options



York ES - Students by Residence



York ES - Base



SPRING FOREST

YORK ES

STOUGH ES

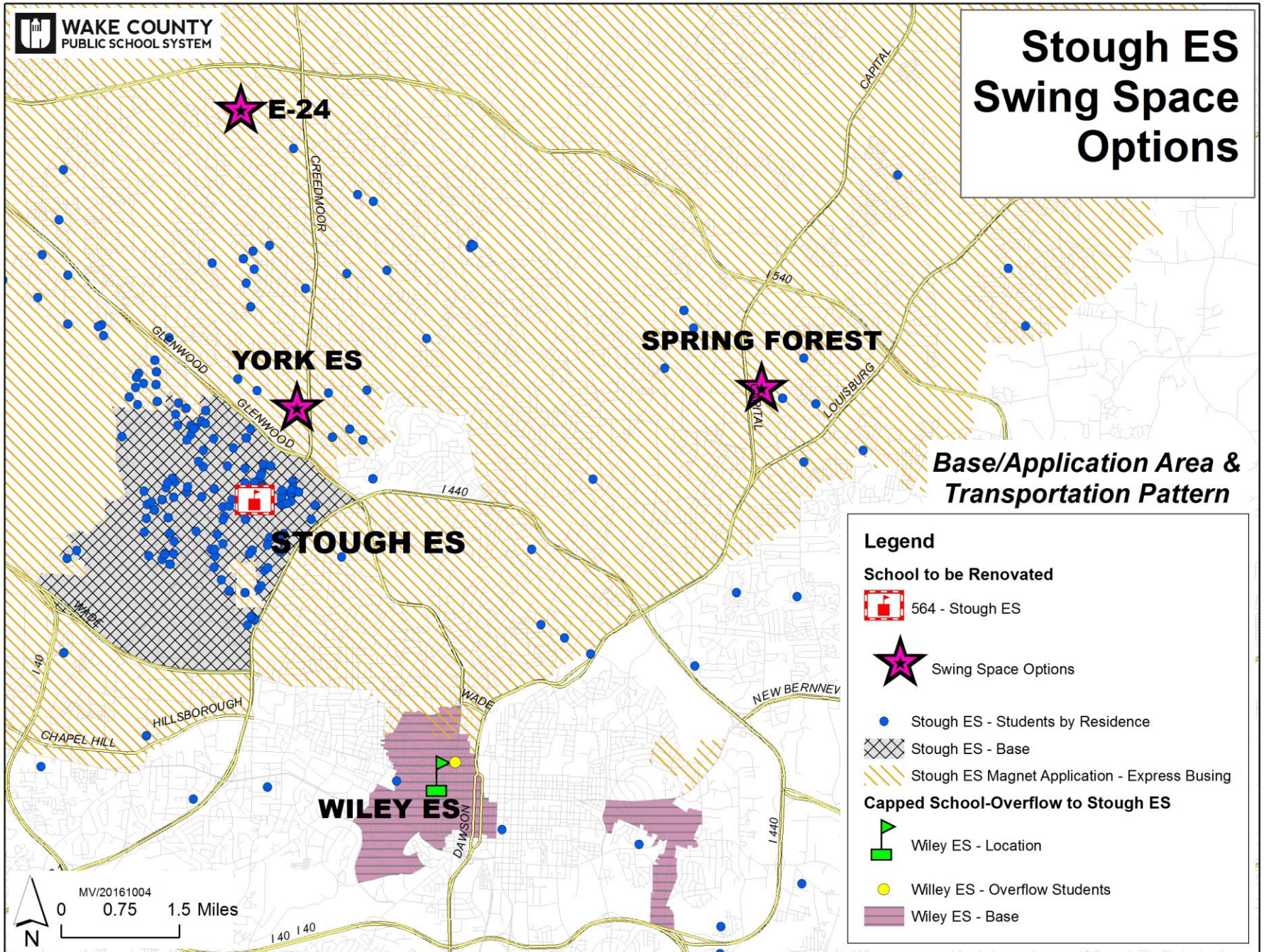
**York ES
Swing Space
Options**

Closer Sites

| School | BOE Owned/Future | Requires Extending Swing |
|----------------|-----------------------|--------------------------|
| North Ridge ES | Spring Forest Modular | N/A |
| York ES | E-24 | Stough ES |
| | | |
| | | |
| | | |

York at E-24 is same as original plan – mileage 5.3 and minutes 12
York at Stough reduces mileage to 1.9 and minutes to 7


Stough ES Swing Space Options



Base/Application Area & Transportation Pattern


Legend

School to be Renovated

 564 - Stough ES

 Swing Space Options

 Stough ES - Students by Residence

 Stough ES - Base

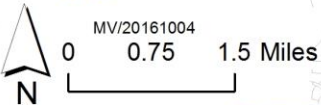
 Stough ES Magnet Application - Express Busing

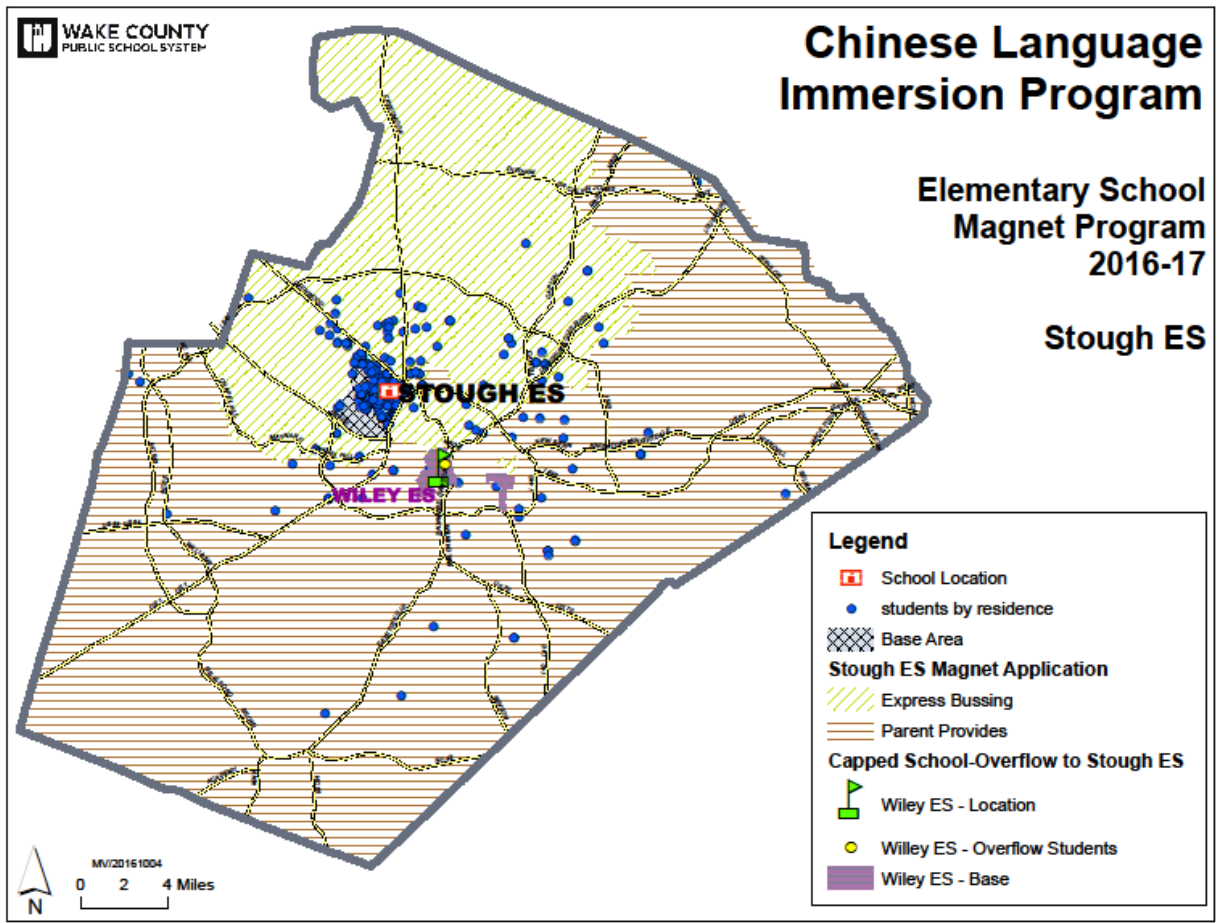
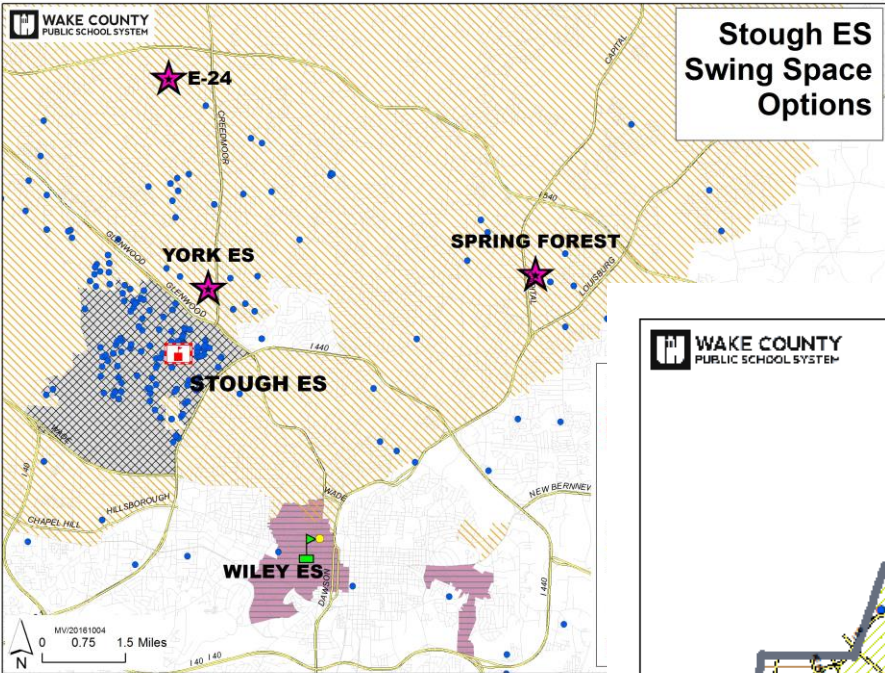
Capped School-Overflow to Stough ES

 Wiley ES - Location

 Wiley ES - Overflow Students

 Wiley ES - Base





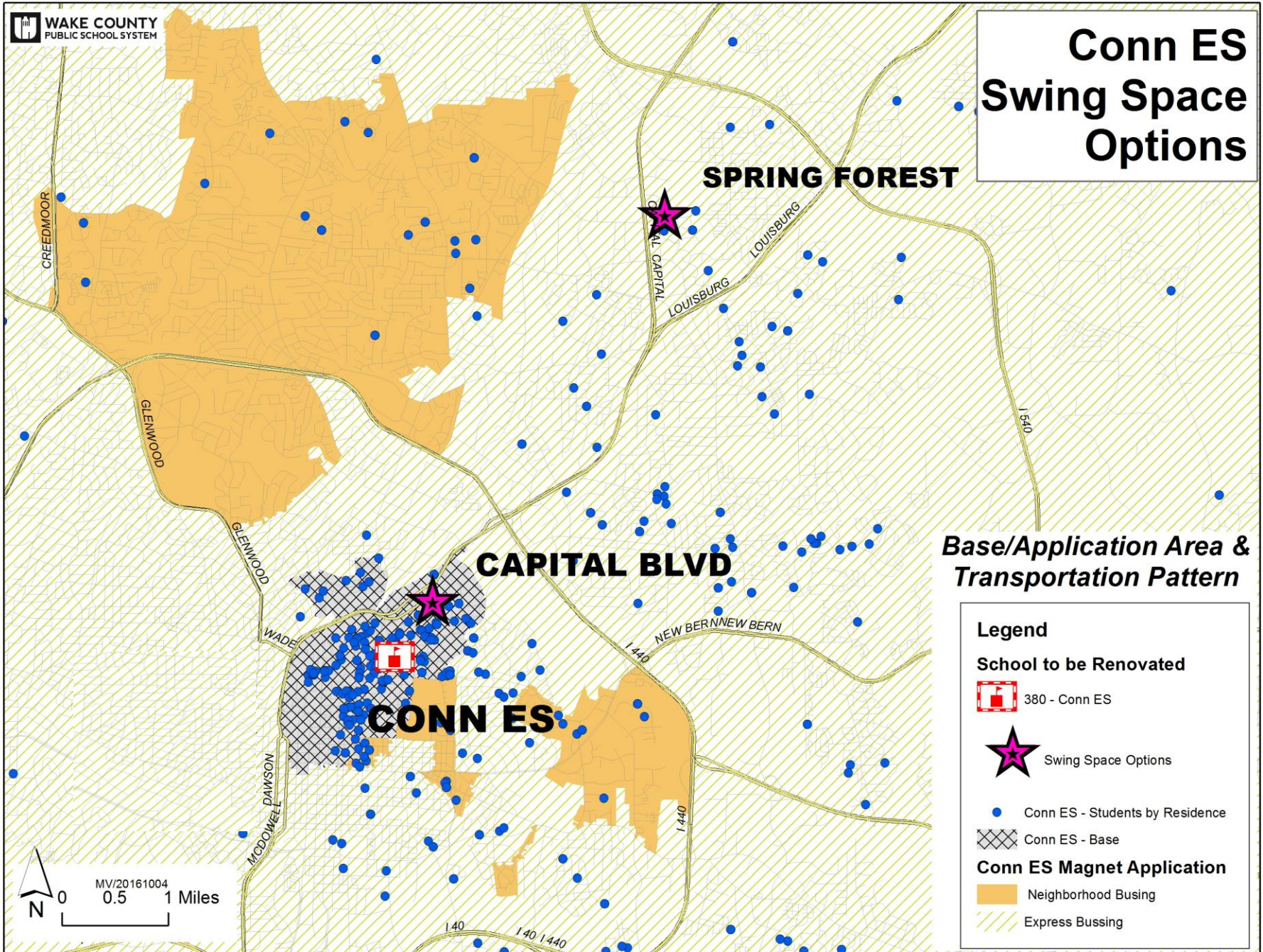
Closer Sites

| School | BOE Owned/Future | Requires Extending Swing |
|----------------|-----------------------|--------------------------|
| North Ridge ES | Spring Forest Modular | N/A |
| York ES | E-24 | Stough ES |
| Stough ES | E-24 | York ES |
| | | |
| | | |

Stough at E24 reduces mileage from 9.9 to 5.8 and minutes from 28 to 16

Stough at York reduces mileage from 9.9 to 1.9 and minutes from 28 to 7

Conn ES Swing Space Options




Base/Application Area & Transportation Pattern


Legend

School to be Renovated

 380 - Conn ES


 Swing Space Options

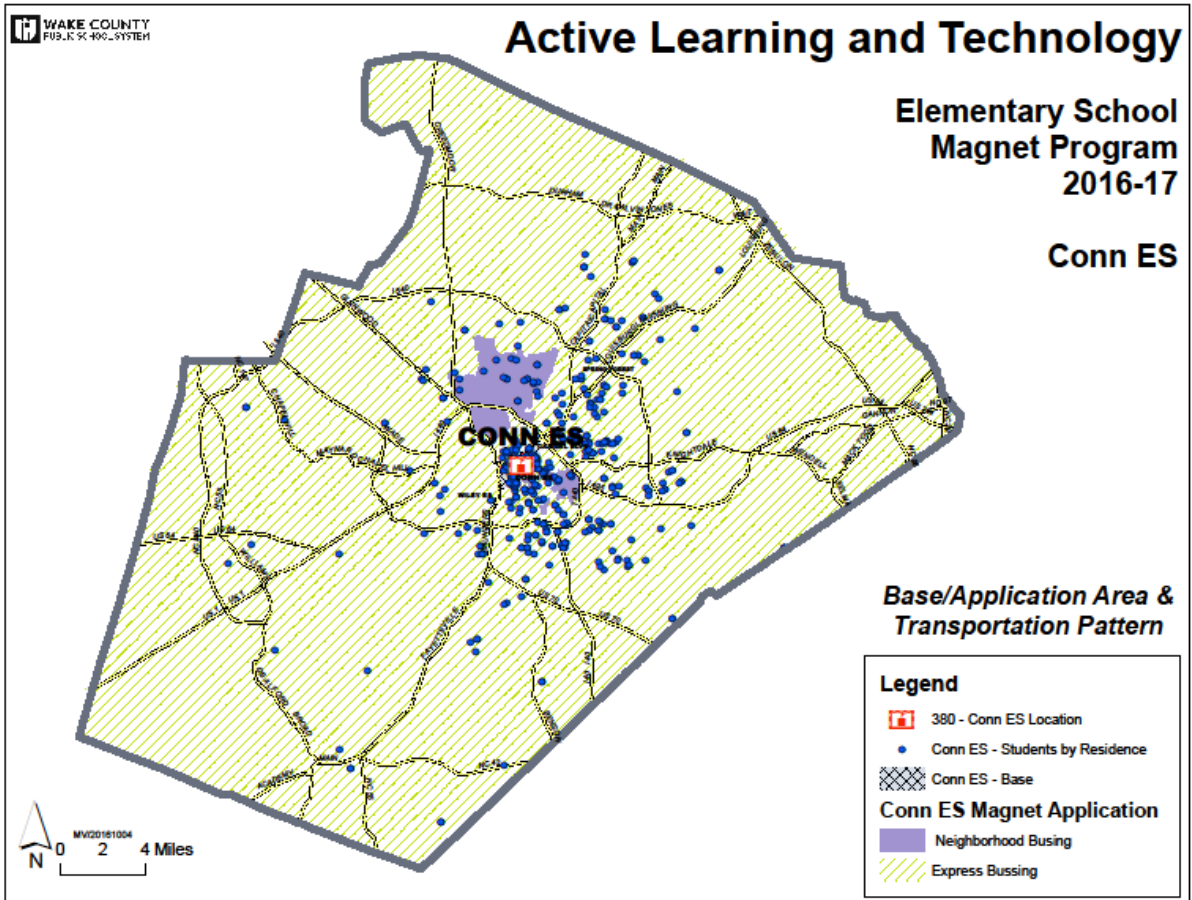
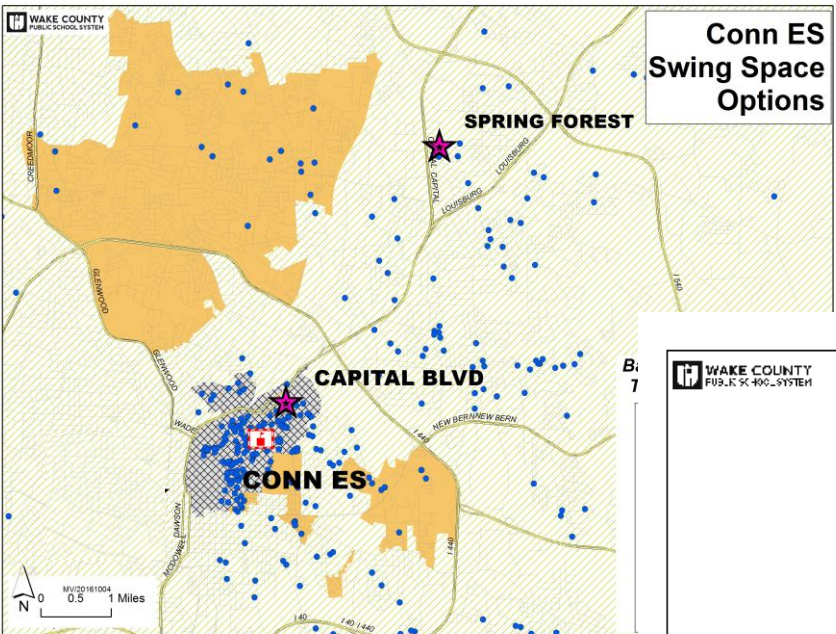
 Conn ES - Students by Residence

 Conn ES - Base

Conn ES Magnet Application

 Neighborhood Busing

 Express Bussing



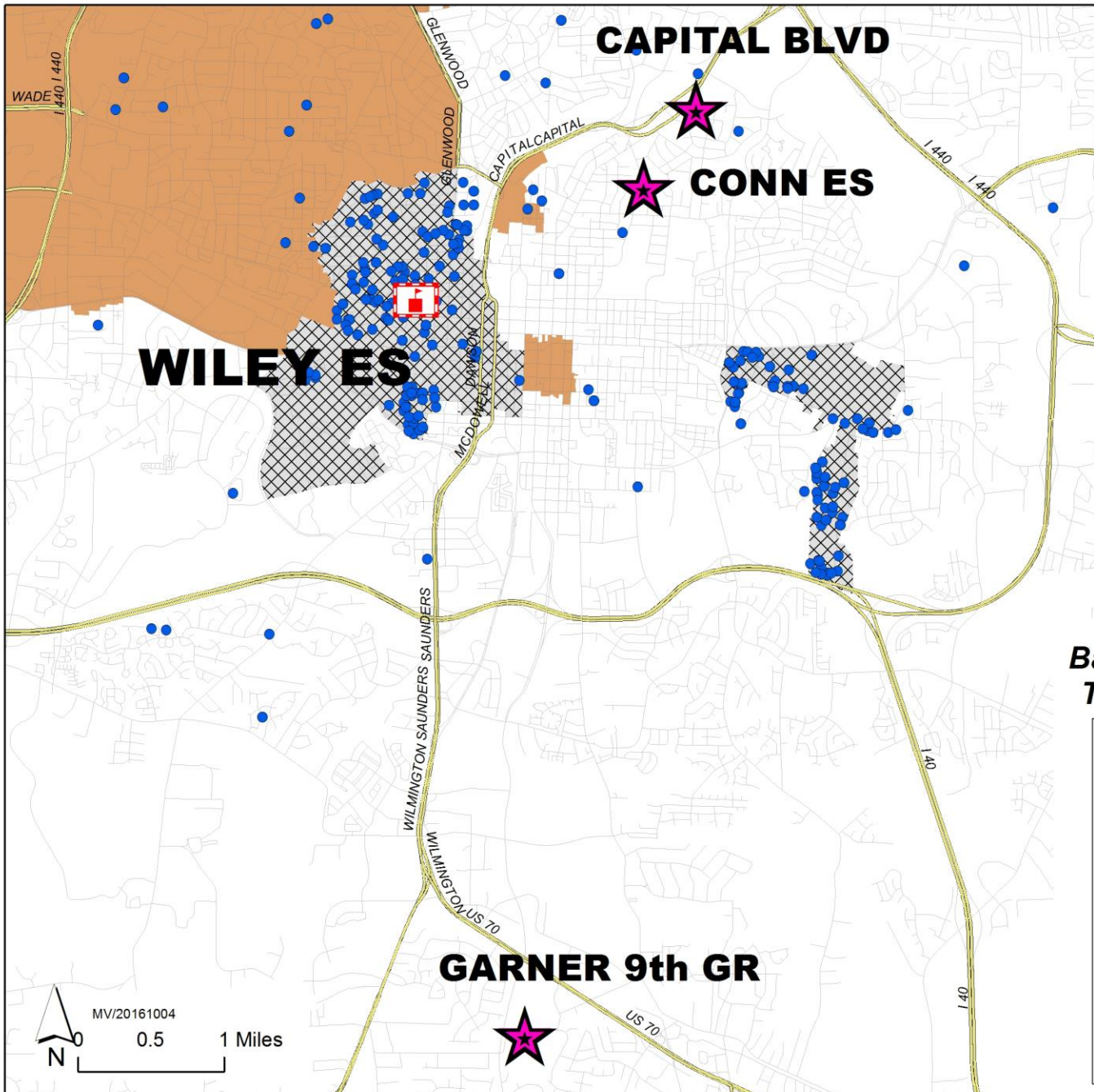
Closer Sites

| School | BOE Owned/Future | Requires Extending Swing |
|----------------|-----------------------|--------------------------|
| North Ridge ES | Spring Forest Modular | N/A |
| York ES | E-24 | Stough ES |
| Stough ES | E-24 | York ES |
| Conn ES | Capital | N/A |
| | | |

Conn at Capital reduces mileage from 5.6 to 1.1 and minutes from 20 to 4






Conn at Wiley reduces mileage from 5.6 to 2.7 and minutes from 20 to 12

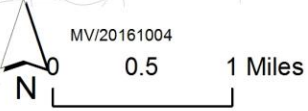
Wiley ES Swing Space Options

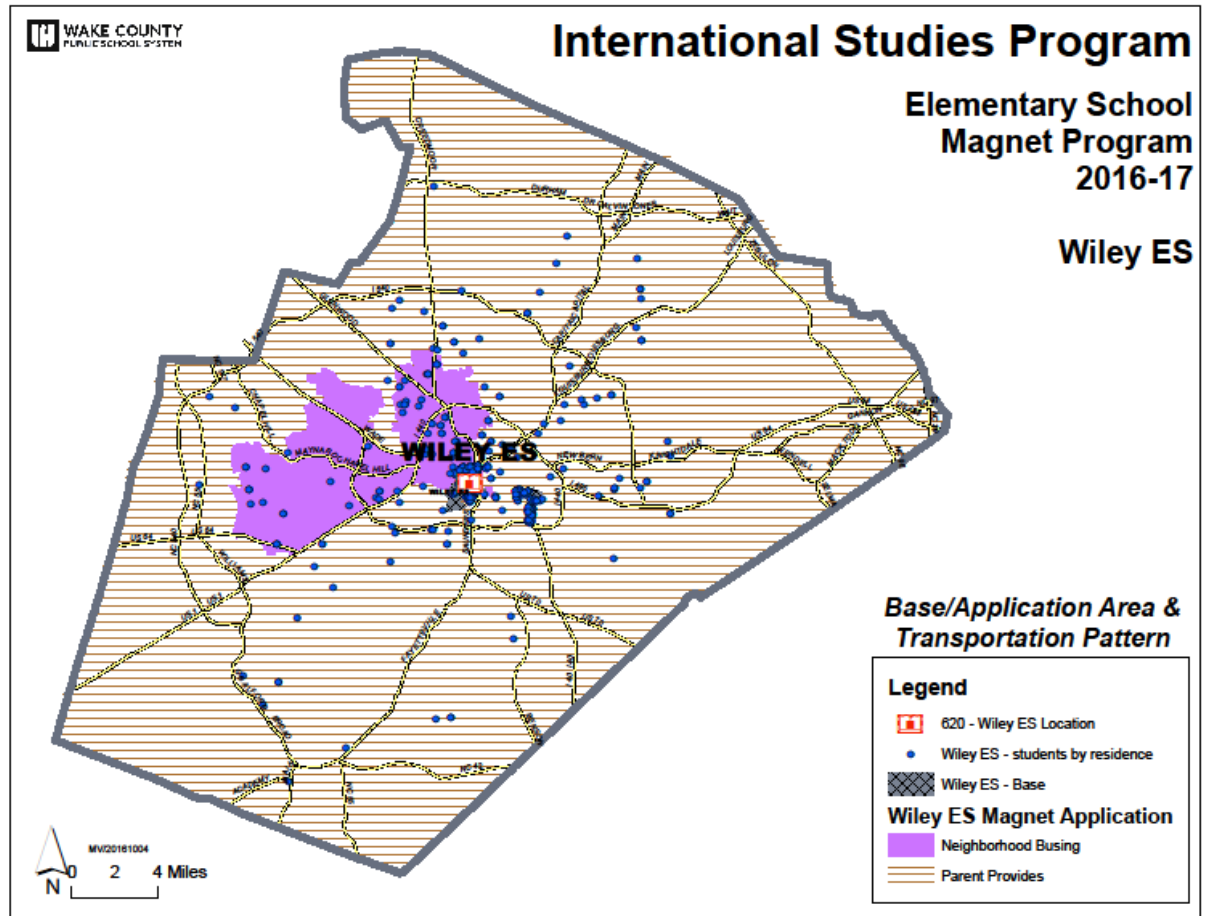
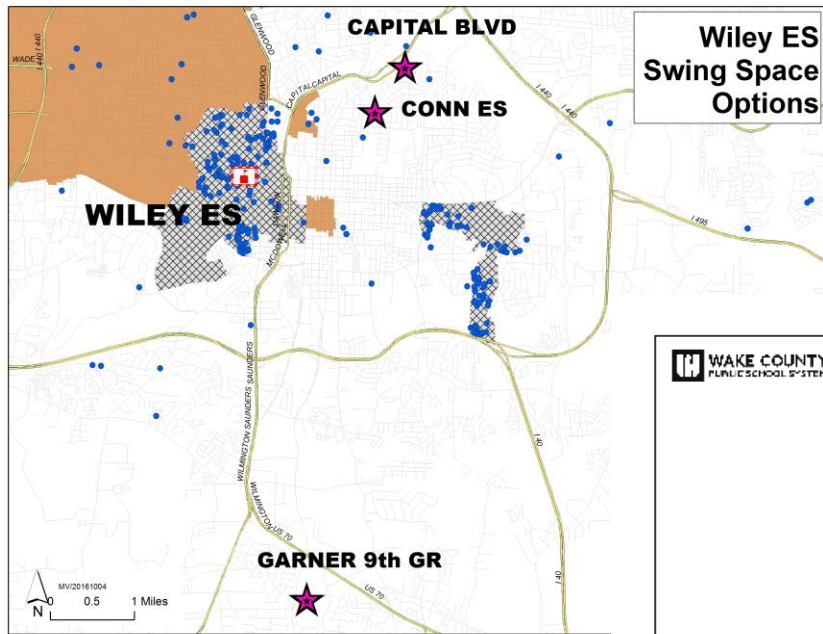


Base/Application Area & Transportation Pattern

Legend

- School to be Renovated**
 620 - Wiley ES
-  Swing Space Options
-  Wiley ES - students by residence
-  Wiley ES - Base
- Wiley ES Magnet Application**
 Neighborhood Busing





Closer Sites

| School | BOE Owned/Future | Requires Extending Swing |
|----------------|-----------------------|--------------------------|
| North Ridge ES | Spring Forest Modular | N/A |
| York ES | E-24 | Stough ES |
| Stough ES | E-24 | York ES |
| Conn ES | Capital | N/A |
| Wiley ES | Capital | Conn ES |

Wiley at Capital reduces mileage from 6.2 to 3.5 and minutes from 24 to 9

Wiley at Conn reduces mileage from 6.2 to 2.7 and minutes from 24 to 10

Use of Garner 9th is becoming more questionable for current option

Common Trends in New Options

- Stough and York one or two years later
- North Ridge one year earlier
- Conn one or two years earlier
- E-24 and HS (Capital Blvd) capacities one or two years later
- Wiley two years later
- Wiley more aligned with original priorities

| Option 2 Plan | 18-19 | 19-20 | 20-21 | 21-22 |
|---------------|--------------|--------------|-------------|-------------|
| Spring Forest | North Ridge | Conn | TBD | TBD |
| E-24 | Construction | Stough | York | E-24 |
| York | York | York | Renovation | York |
| Conn | Conn | Renovation | Conn | Conn |
| Stough | Stough | Renovation | Stough | Stough |
| Wiley | Wiley | Wiley | Renovation | Wiley |
| North Ridge | Renovation | North Ridge | North Ridge | North Ridge |
| 1820 Capital | Construction | Construction | Wiley | New HS |
| Garner 9th | SNAP/PD | SNAP/PD | SNAP/PD | SNAP/PD |

This option provides closer swing space for Stough and Wiley

This option will require an estimated \$1.9 M for inflation and conversions

| Option 3 Plan | 18-19 | 19-20 | 20-21 | 21-22 |
|--------------------------|--------------|--------------|-------------|-------------|
| Spring Forest | TBD | North Ridge | TBD | TBD |
| E-24 | Construction | E-24 | E-24 | E-24 |
| York | York | Renovation | York | York |
| Conn | Conn | Conn | Conn | Renovation |
| Stough | Renovation | Stough | Stough | Stough |
| Wiley | Wiley | Wiley | Renovation | Wiley |
| North Ridge | North Ridge | Renovation | North Ridge | North Ridge |
| 1820 Capital | Construction | Construction | Wiley | Conn |
| W. Raleigh Mod.Campus | Stough | York | N/A | N/A |
| Garner 9th | SNAP/PD | SNAP/PD | SNAP/PD | SNAP/PD |

This option provides closer swing space for Stough, Wiley, and Conn

This option will require an estimated \$15.3 M for inflation and conversions

Earlier

Same

Later

| Option 5 Plan | 18-19 | 19-20 | 20-21 | 21-22 |
|---------------|--------------|--------------|-------------|-------------|
| Spring Forest | North Ridge | Conn | Conn | TBD |
| E-24 | Construction | York | York | E-24 |
| York | York | Renovation | Stough | York |
| Conn | Conn | Renovation | Wiley | Conn |
| Stough | Stough | Stough | Renovation | Stough |
| Wiley | Wiley | Wiley | Renovation | Wiley |
| North Ridge | Renovation | North Ridge | North Ridge | North Ridge |
| 1820 Capital | Construction | Construction | New HS | New HS |
| Garner 9th | SNAP/PD | SNAP/PD | SNAP/PD | SNAP/PD |

This option provides closer swing space for Stough and Wiley

This option will require an estimated \$1.2 M for inflation and conversions

Earlier

Same

Later

| Option 6 Plan | 18-19 | 19-20 | 20-21 | 21-22 |
|------------------------|--------------|--------------|-------------|-------------|
| Spring Forest | North Ridge | Conn | TBD | TBD |
| E-24 | Construction | York | E-24 | E-24 |
| York | York | Renovation | York | York |
| Conn | Conn | Renovation | Conn | Conn |
| Stough (Temp Reassign) | Renovation | Stough | Stough | Stough |
| Wiley | Wiley | Wiley | Renovation | Wiley |
| North Ridge | Renovation | North Ridge | North Ridge | North Ridge |
| 1820 Capital | Construction | Construction | Wiley | New HS |
| Garner 9th | SNAP/PD | SNAP/PD | SNAP/PD | SNAP/PD |

This option provides closer swing space for Stough and Wiley
This option will result in an estimated \$1.8 M in savings

Earlier

Same

Later

| Option 7 Plan | 18-19 | 19-20 | 20-21 | 21-22 |
|---------------|--------------|--------------|-------------|-------------|
| Spring Forest | North Ridge | Conn | TBD | TBD |
| E-24 | Construction | Stough | York | E-24 |
| York | York | York | Renovation | York |
| Conn | Conn | Renovation | Conn | Conn |
| Stough | Stough | Renovation | Stough | Stough |
| Wiley | Renovation | Wiley | Wiley | Wiley |
| North Ridge | Renovation | North Ridge | North Ridge | North Ridge |
| 1820 Capital | Construction | Construction | New HS | New HS |
| Garner 9th | Wiley | SNAP/PD | SNAP/PD | SNAP/PD |

This option provides closer swing space for Stough

This option will result in an estimated \$200 K in savings

Earlier

Same

Later

Today

- Need Guidance from Committee or Full Board on Option to use in plan