



RICHMOND HIGH SCHOOL PROJECT

Design Approach Update

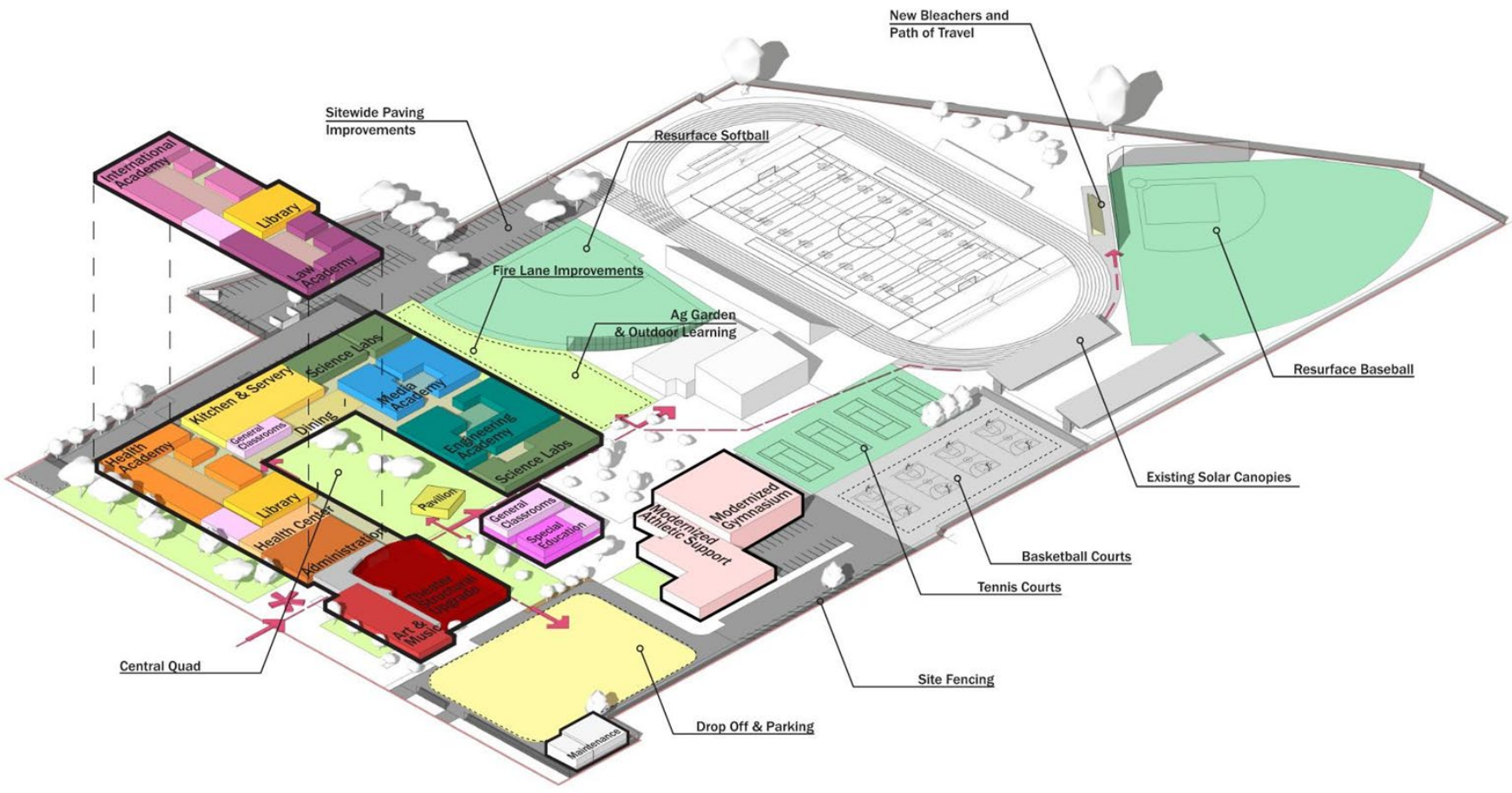
MAY 15, 2024



Board Approved Option – November 8th

Explore Outdoor Plaza Scheme

Team will begin working with the preferred option as we move into the next phase while at the same time looking for opportunities to incorporate the Unique strengths of the Promenade Scheme.



Design Priorities	Unique Strengths Only Present in Promenade Scheme
Safe, healthy, and well-built	<ul style="list-style-type: none"> New Drop off and parking sequence at front of campus
Physical, emotional, and identity safety	<ul style="list-style-type: none"> Activated mall provides space and resources for student organizations.
Optimal spaces for learning	<ul style="list-style-type: none"> New Construction at Gymnasium including new lobby, locker rooms and support space for the main gym.
Synergy with staff, families, community	<ul style="list-style-type: none"> Large Indoor spaces for events, community use
Equitable investments and access	<ul style="list-style-type: none"> No Interim Housing required

Current Adjacency Plan

The newest scheme pulls together strengths from both the Plaza and Promenade Schemes:

- New drop off and parking at front of campus
- No interim housing needed with construction phasing



Site Plan

New Drop-off / Visitor Parking

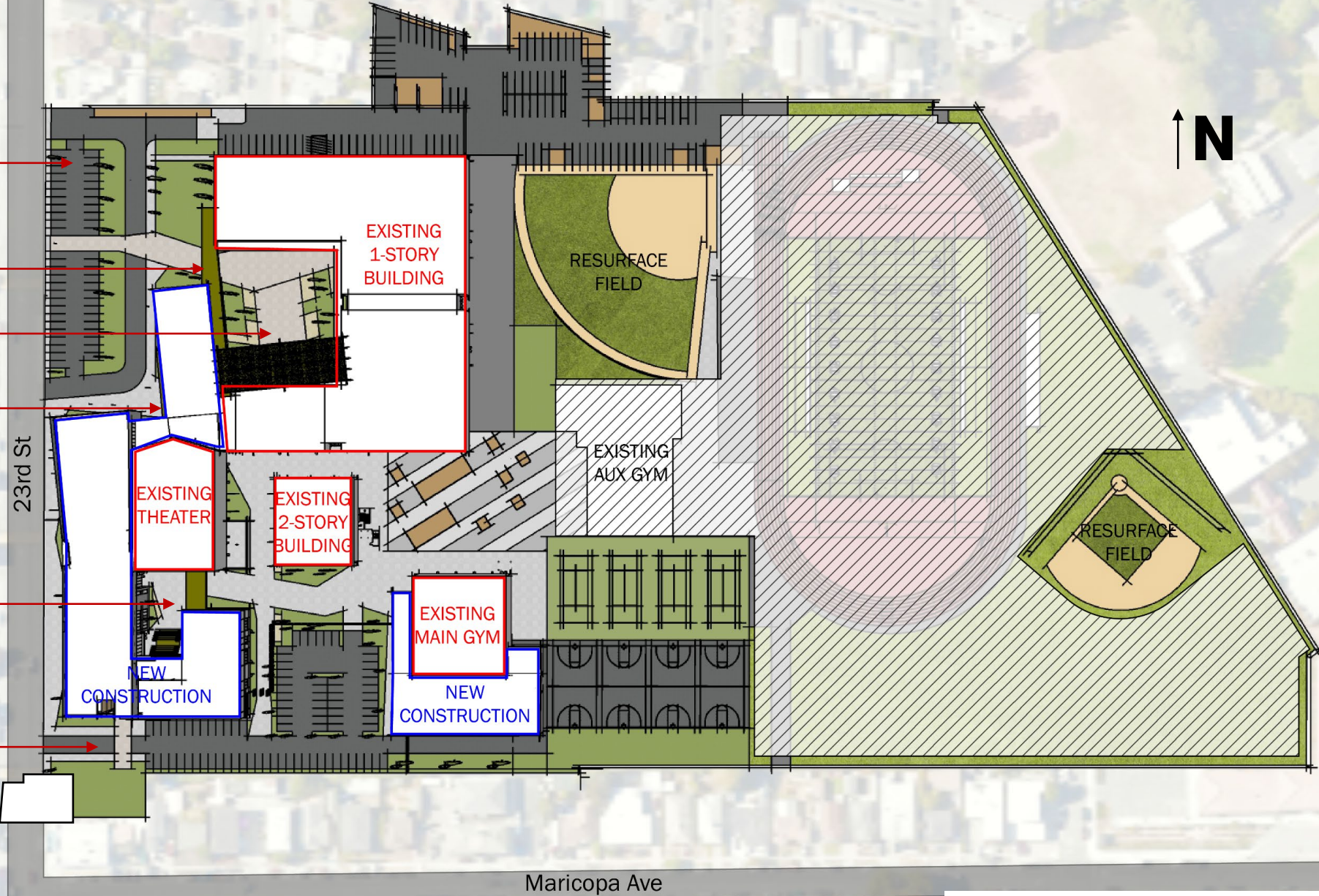
Secondary Entrance

Central Courtyard

Primary Entrance

Art & Music Plaza

Staff Entrance

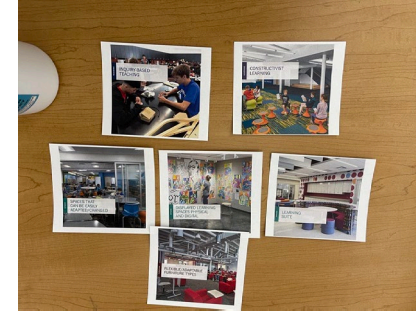
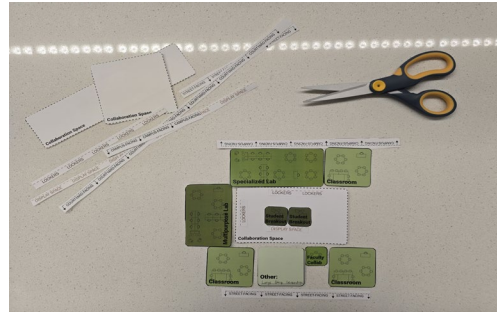


Workshops

January 23 –24:

2-day workshop at Richmond HS with students and staff

Activities: draw dream school, learning connections



February 14:

All Staff Meeting

Activities: space plan/confirm the program for your academy or department

Two (2) Steering Committee Meetings along with Individual program meetings with District Librarian and District Food Service

April 25:

Community Meeting

Activities: review massing options

Design Priorities

1. Safe, healthy, and well-built
2. Physical, emotional, and identity safety
3. Optimal spaces for learning
4. Synergy with staff, families, community
5. Equitable investments and access

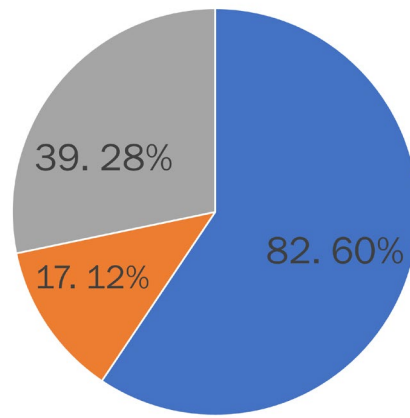


District Survey

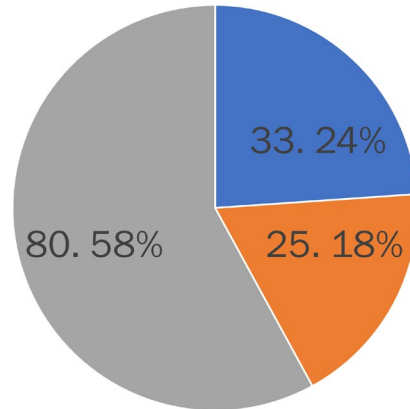
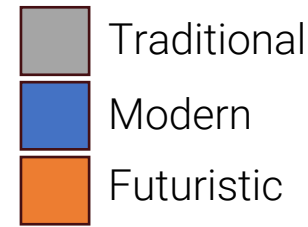
District-wide Survey
on the style of
Architecture desired
for Richmond HS

138 Participants

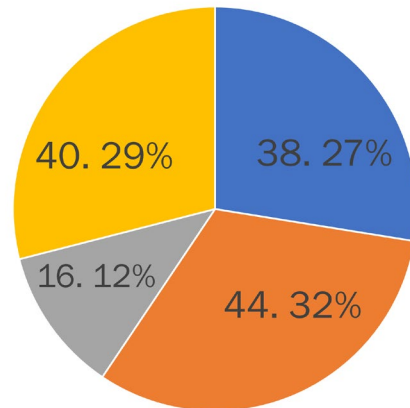
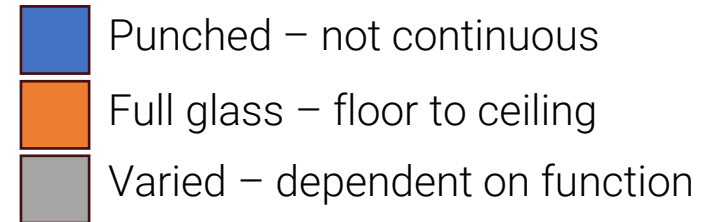
Results as of
March 18, 2024



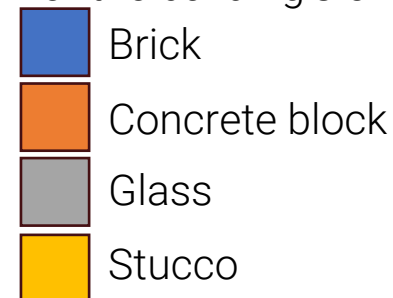
What type of building forms do you prefer?

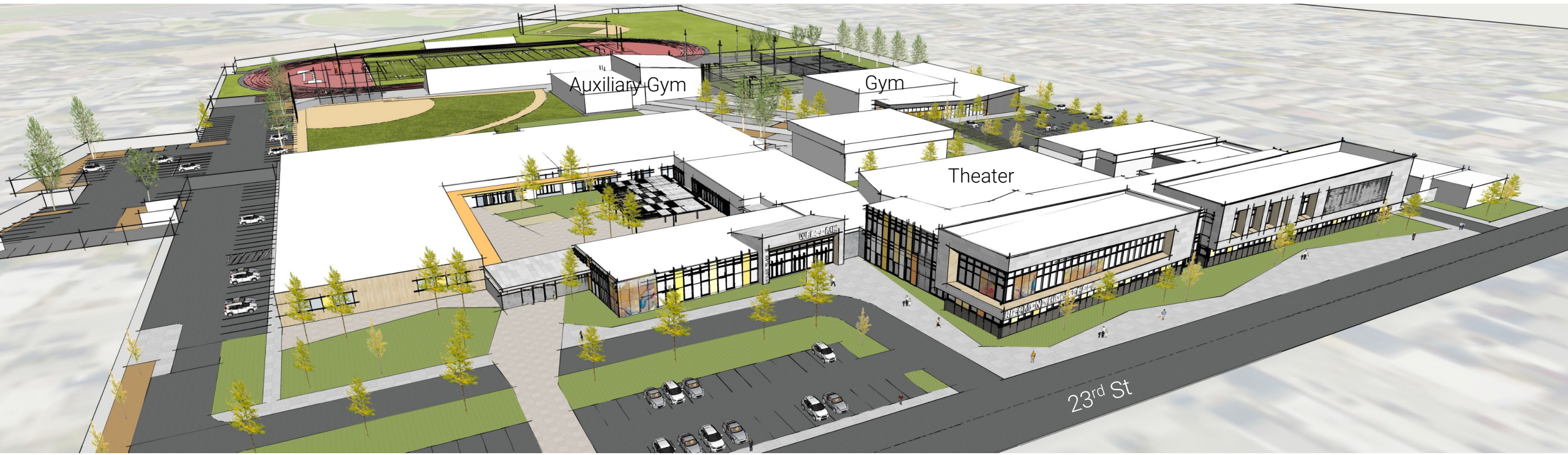


How important is window placement in the overall design of the building?



Which materials do you think are most suitable for the building's exterior?





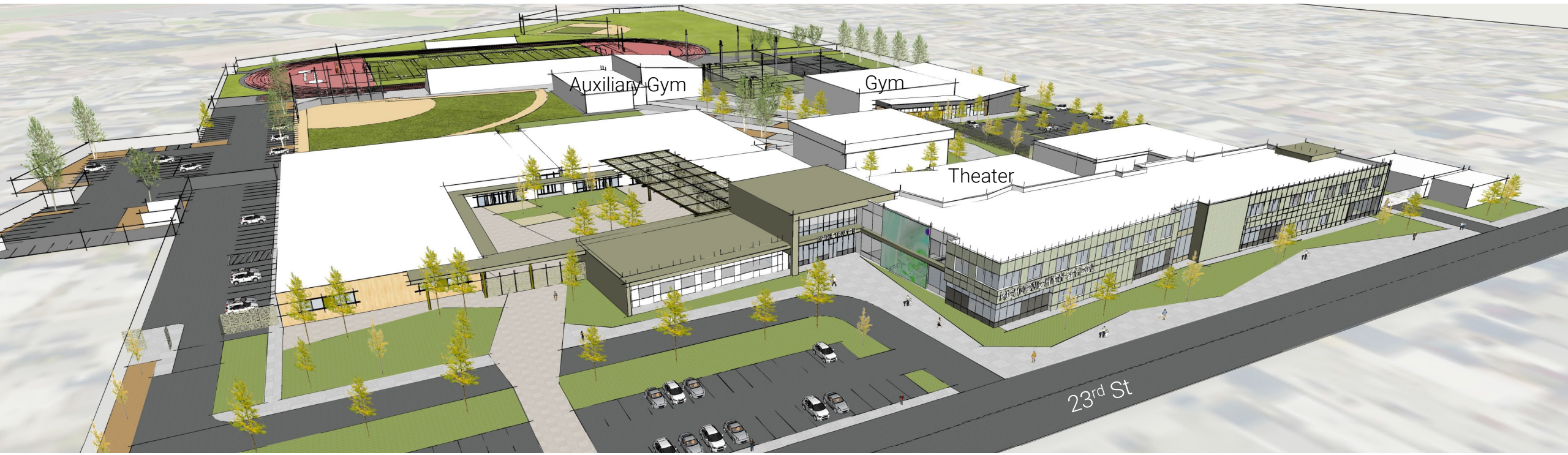
Massing Option 1





Massing Option 2





Massing Option 3



“Option 1 has the sharing of culture, representing the name of RHS.”



Preferred Option (Option 1)

