

# Unaudited Actuals

San José Unified School District

Board of Education

September 12, 2024



# Topics

- Context
- Projections to actuals
- Outlook



# Our Budget Cycle for 2023-2024

Jun '23 = budget adoption → all projections

Dec '23 = first interim → 4 months actuals

Mar '24 = second interim → 7 months actuals

Sep '24 = unaudited actuals



# 2023-2024 Unaudited Actuals

- 2023-2024 fiscal and school year
- July 1, 2023 through June 30, 2024

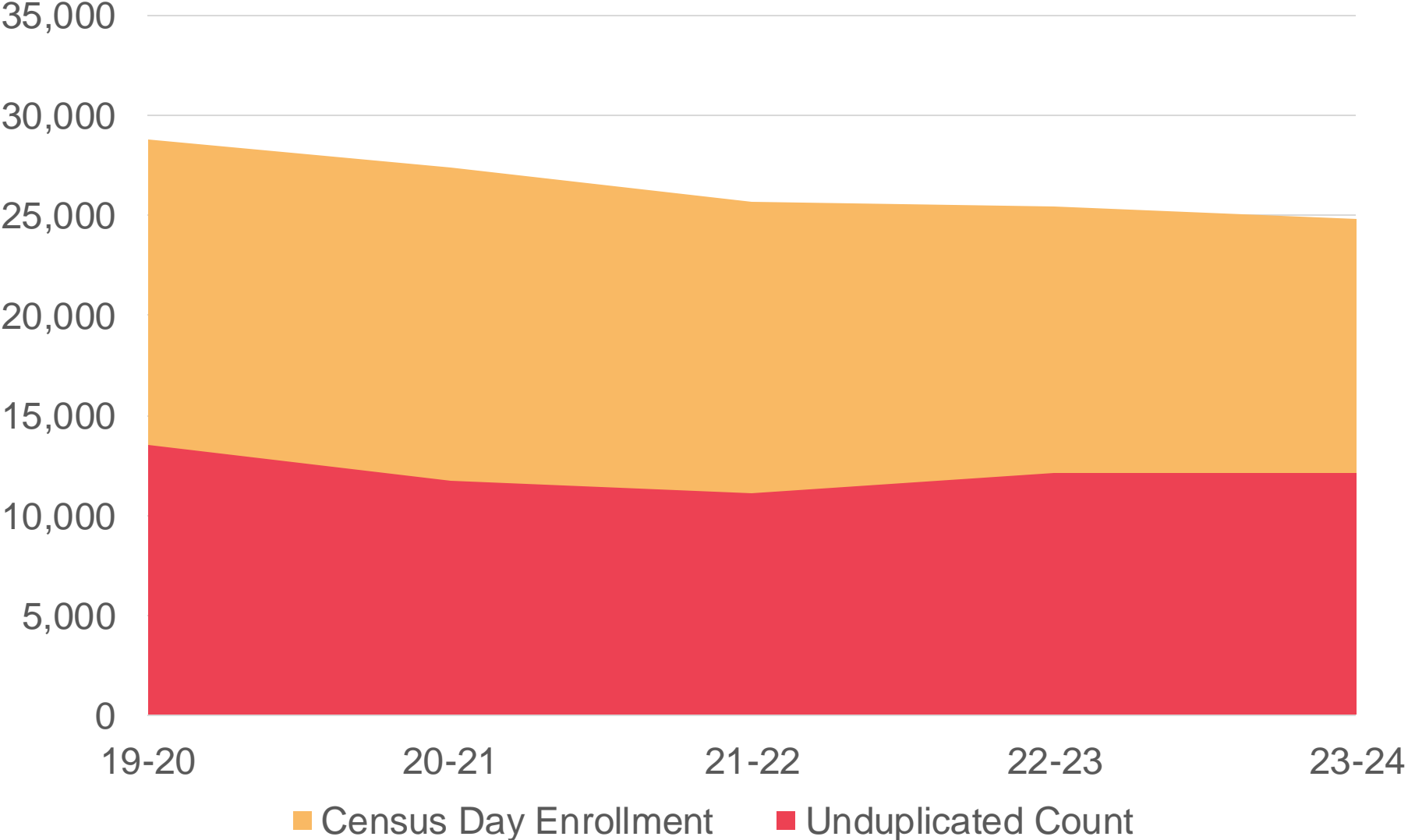




<b><i>Gen. Fund</i></b>	<b><i>Projected</i></b>	<b><i>Actual</i></b>	<b><i>Change</i></b>	<b><i>Change</i></b>
Students	25,038	24,828	-564	-2.22%



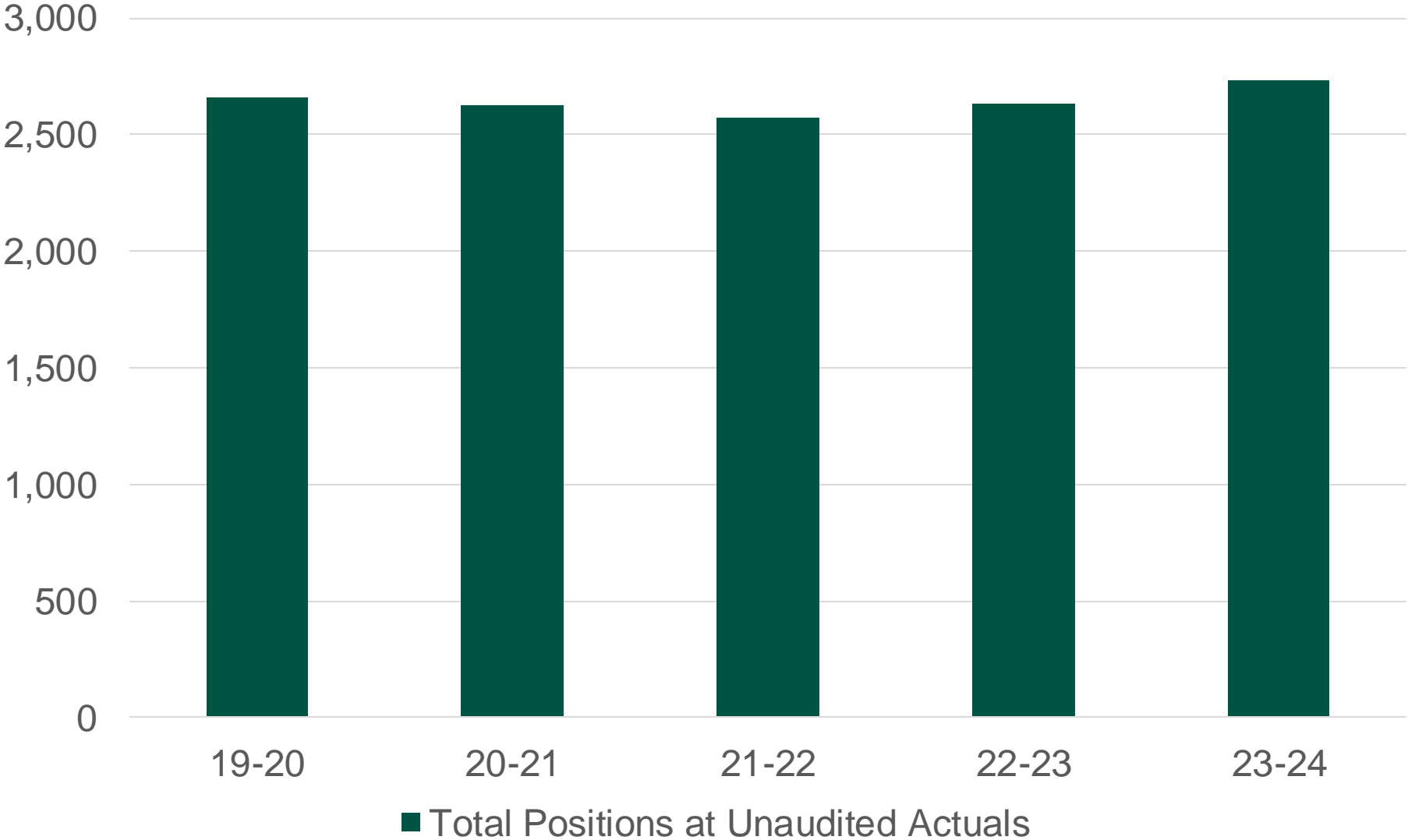
# Students

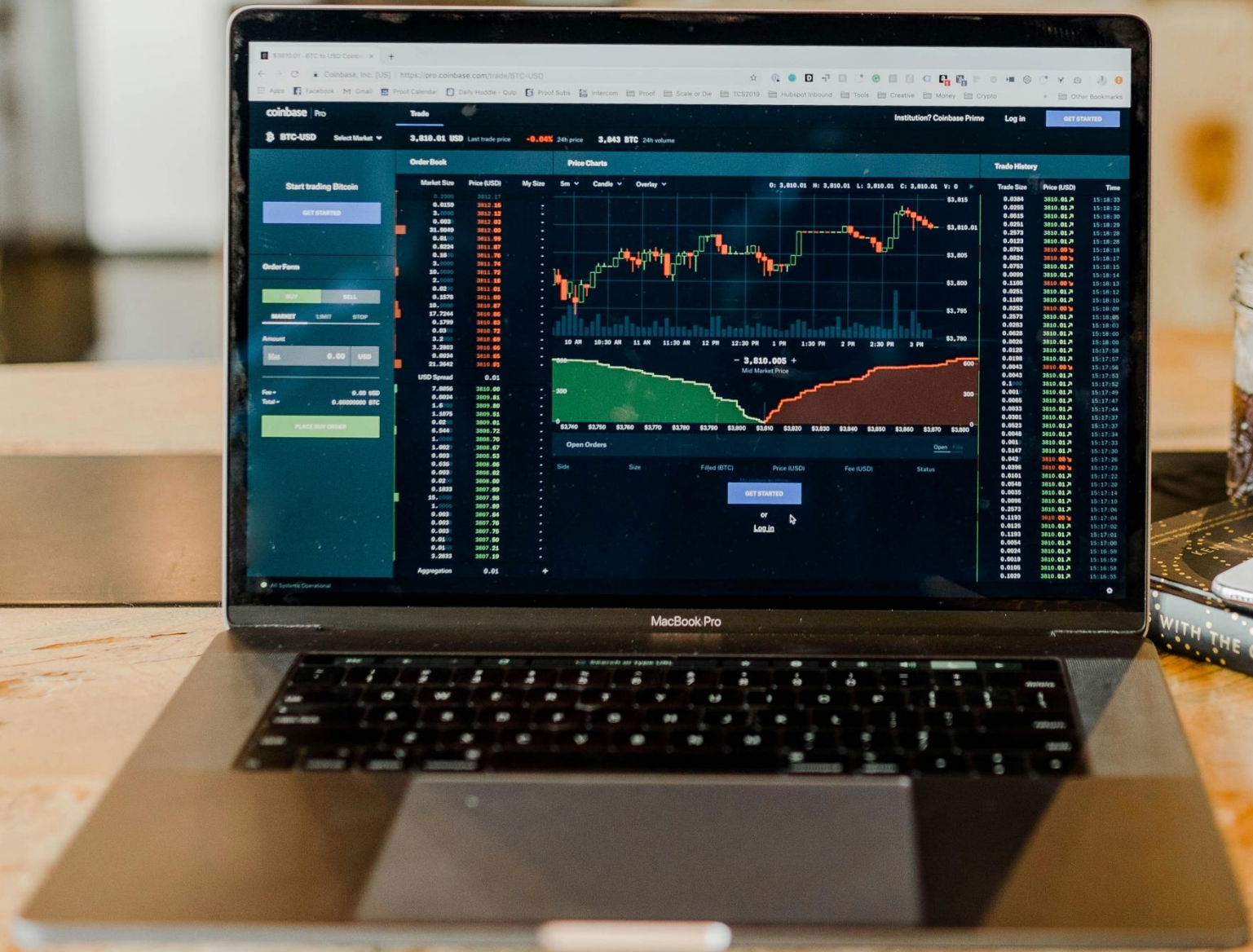


<b><i>Gen. Fund</i></b>	<b><i>Projected</i></b>	<b><i>Actual</i></b>	<b><i>Change</i></b>	<b><i>Change</i></b>
Students	25,392	24,828	-564	-2.22%
Positions	2,671	2,732	61	2.29%



# Positions





<b><i>Gen. Fund</i></b>	<b><i>Projected</i></b>	<b><i>Actual</i></b>	<b><i>Change</i></b>	<b><i>Change</i></b>
Students	25,392	24,828	-564	-2.22%
Positions	2,671	2,732	61	2.29%
Revenue	\$439m	\$480m	\$41m	9.24%



# Revenue

- Property tax growth
- Unrestricted lottery increase
- Interest rates and fair market value



<b><i>Gen. Fund</i></b>	<b><i>Projected</i></b>	<b><i>Actual</i></b>	<b><i>Change</i></b>	<b><i>Change</i></b>
Students	25,392	24,828	-564	-2.22%
Positions	2,671	2,732	61	2.29%
Revenue	\$439m	\$480m	\$41m	9.24%
Expense	\$464m	\$477m	\$13m	2.77%



# Expense

- Self insured claims
- Specialized services
- Site carryover



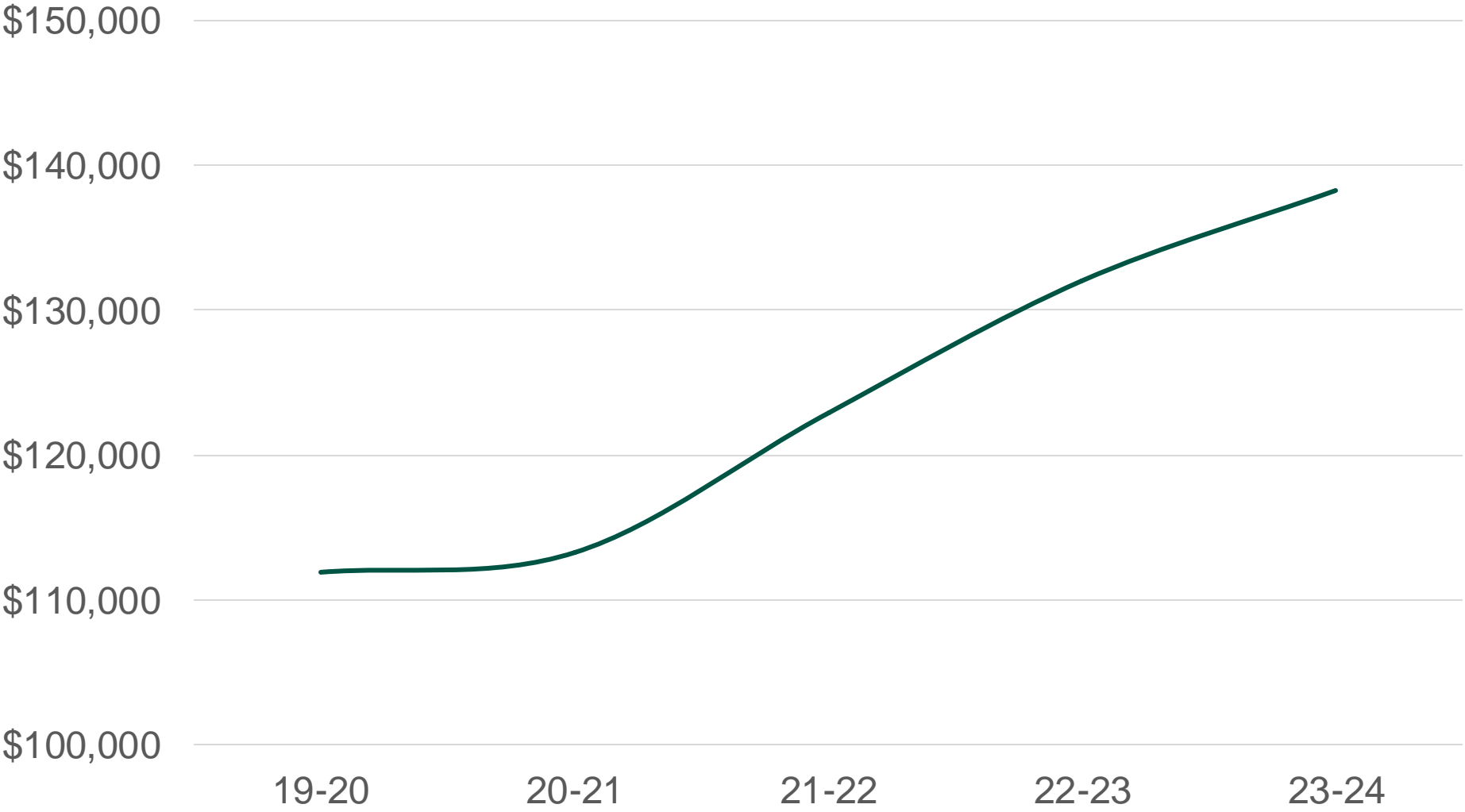
<b><i>Gen. Fund</i></b>	<b><i>Projected</i></b>	<b><i>Actual</i></b>	<b><i>Change</i></b>	<b><i>Change</i></b>
Salaries	\$246m	\$247m	\$1m	0.5%
Retirement	\$65m	\$65m	-17k	0.0%
Health Benefits	\$47m	\$47m	-\$6k	0.0%
Other Benefits	\$12m	\$12m	\$86k	0.7%



<b><i>Gen. Fund</i></b>	<b><i>Projected</i></b>	<b><i>Actual</i></b>	<b><i>Change</i></b>	<b><i>Change</i></b>
Per student	\$17,307	\$19,157	\$1,850	10.7%
Per position	\$138,782	\$138,234	-\$548	-0.4%
Total Comp	\$371m	\$372m	\$1m	1.5%
Compensation	80%	78%	-2%	–



# Compensation



— Per Position Compensation



# Summary

Students	-14%
Positions	+3%
Unrestricted revenue	+21%
Expense	+31%
Compensation	+25%





**WARNING**  
Do not look at the sun.  
Loss of eyesight can occur.



# Unaudited Actuals

San José Unified School District

Board of Education

September 12, 2024

