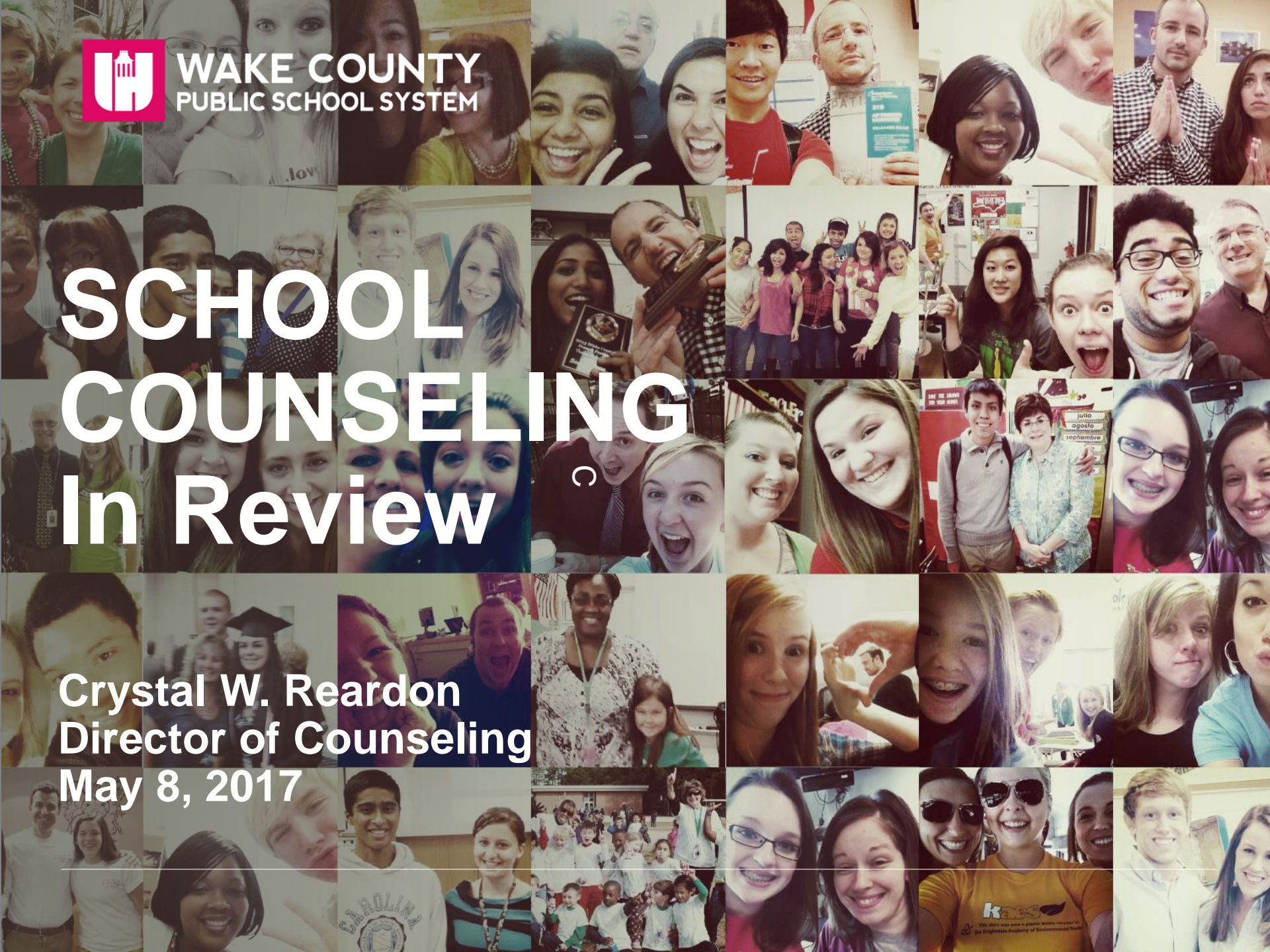




WAKE COUNTY
PUBLIC SCHOOL SYSTEM

SCHOOL COUNSELING In Review

Crystal W. Reardon
Director of Counseling
May 8, 2017



School

~~GUIDANCE~~

COUNSELOR

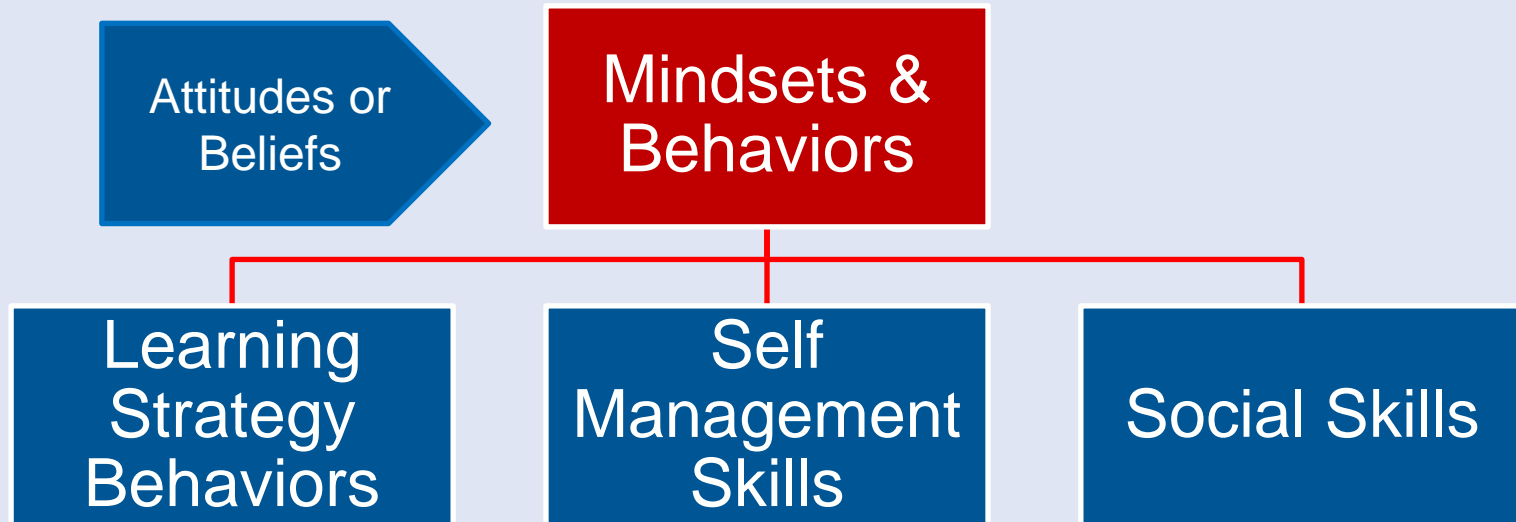
What Do School Counselors Do?

- The more important question is, *“how are students different as a result of what school counselors do?”*
- To help answer this question, the American School Counselor Association (ASCA) created the ASCA National Model ®, which is a framework for a comprehensive, data-driven school counseling program

K-12 School Counseling Work Plan

- Includes school, district, and community collaboration
- Focuses on improving student attendance, behavior, and academics
- Is aligned with MTSS and Vision 2020

ASCA Mindsets and Behaviors



Observable behaviors commonly associated with being a successful student.

ASCA National Model Framework

1. Foundation

- Beliefs
- Vision
- Mission
- Program Goals

2. Management

- Annual Agreement
- Advisory Council
- Calendars
- Action Plans

3. Accountability

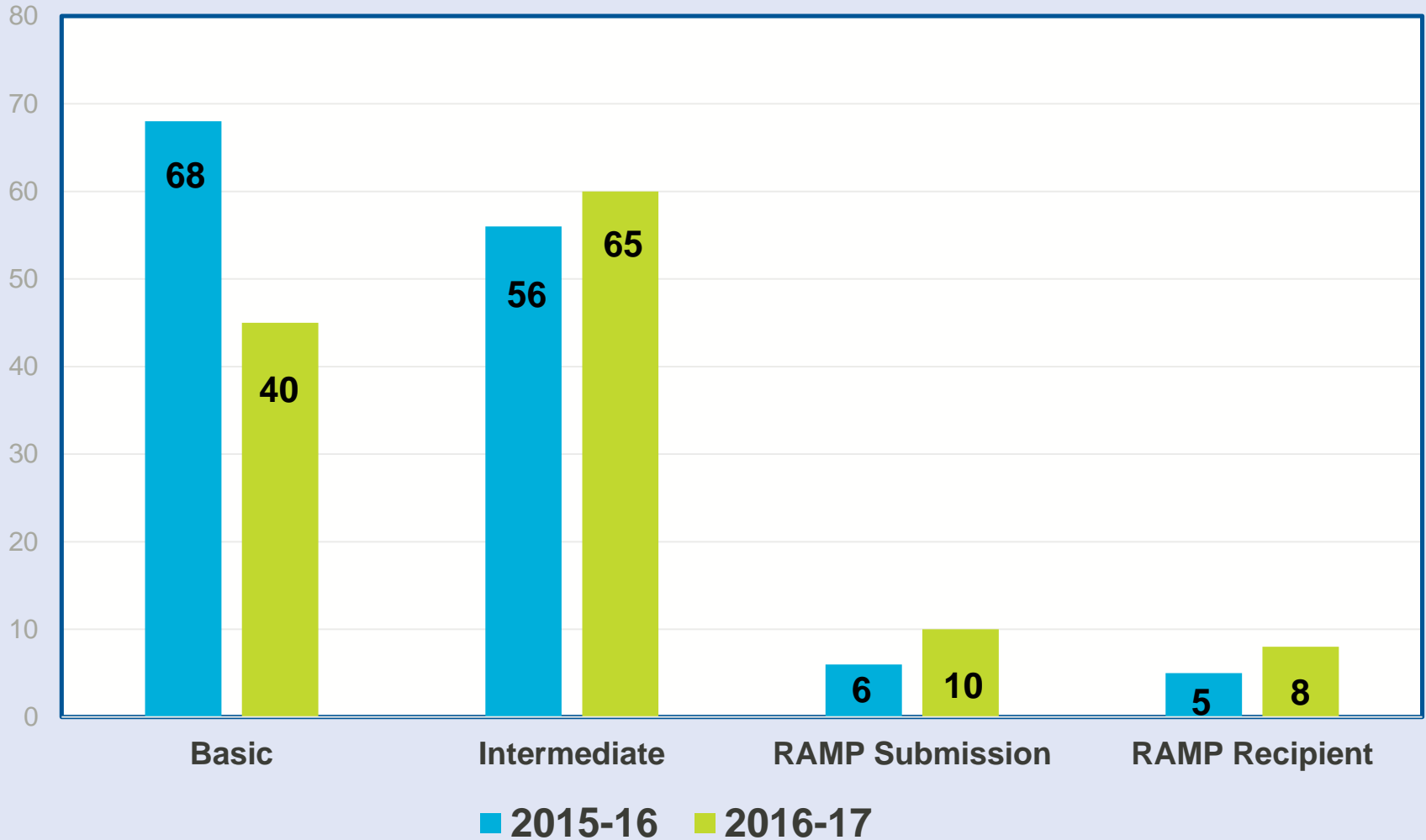
- ▶ Results Reports: process, perception, and outcome data for Core, Group, and Closing the Gap

Components of the ASCA National Framework are aligned with the standards in the artifacts section of the Rubric for Evaluating North Carolina's School Counselors.

School Counselor Evaluation Instrument

1. Demonstrate **leadership, advocacy, and collaboration**
2. Promote a **respectful environment** for a **diverse population** of students
3. Understand and facilitate the implementation of a **comprehensive school counseling program**
4. Promote **learning** for all students
5. Actively **reflect on their practice**

National Model Results



National Model Highlights:

- 54 RAMP Schools

Recognized ASCA Model Program for School Counseling

- 8 Schools recognized in 2017

Creech Road ES	Fuller ES	Fuquay- Varina ES	Green ES
Ligon MS	Lynn Road ES	Rolesville MS	West Lake MS

National Model Goals

Dropout Prevention (K-5)

By June 9, 2017, 3rd grade students who received a 1 or 2 on the BOG who are identified as a potential “Read 2 Achieve student” will increase their reading achievement by passing Read 2 Achieve requirements with a success rate of 80% of the participating students.

National Model Goals (Actions)

Dropout Prevention (K-5)

- Consultation with reading intervention teacher
- Intervention team Tier II plan support
- School Success Lunch Bunch using HOPS (homework, organization, and planning skills) interventions
- Biweekly check-ins and individual counseling sessions as needed
- Lunch dates to work on test taking skills and confidence

National Model Goals

Dropout Prevention (6-8)

By June 2017 academically at-risk 8th grade students will increase their quarter grade by one letter grade and decrease at-risk behaviors as indicated by a teacher survey by 50%.

National Model Goals (Actions)

Dropout Prevention (6-8)

- Academic skills group for 8 weeks
- Point reward system for increasing grades
- Follow up meetings with students from academic skills group who did not show adequate progress
- Individual goal setting and progress monitoring
- Check in time with students

National Model Goals

Dropout Prevention (9-12)

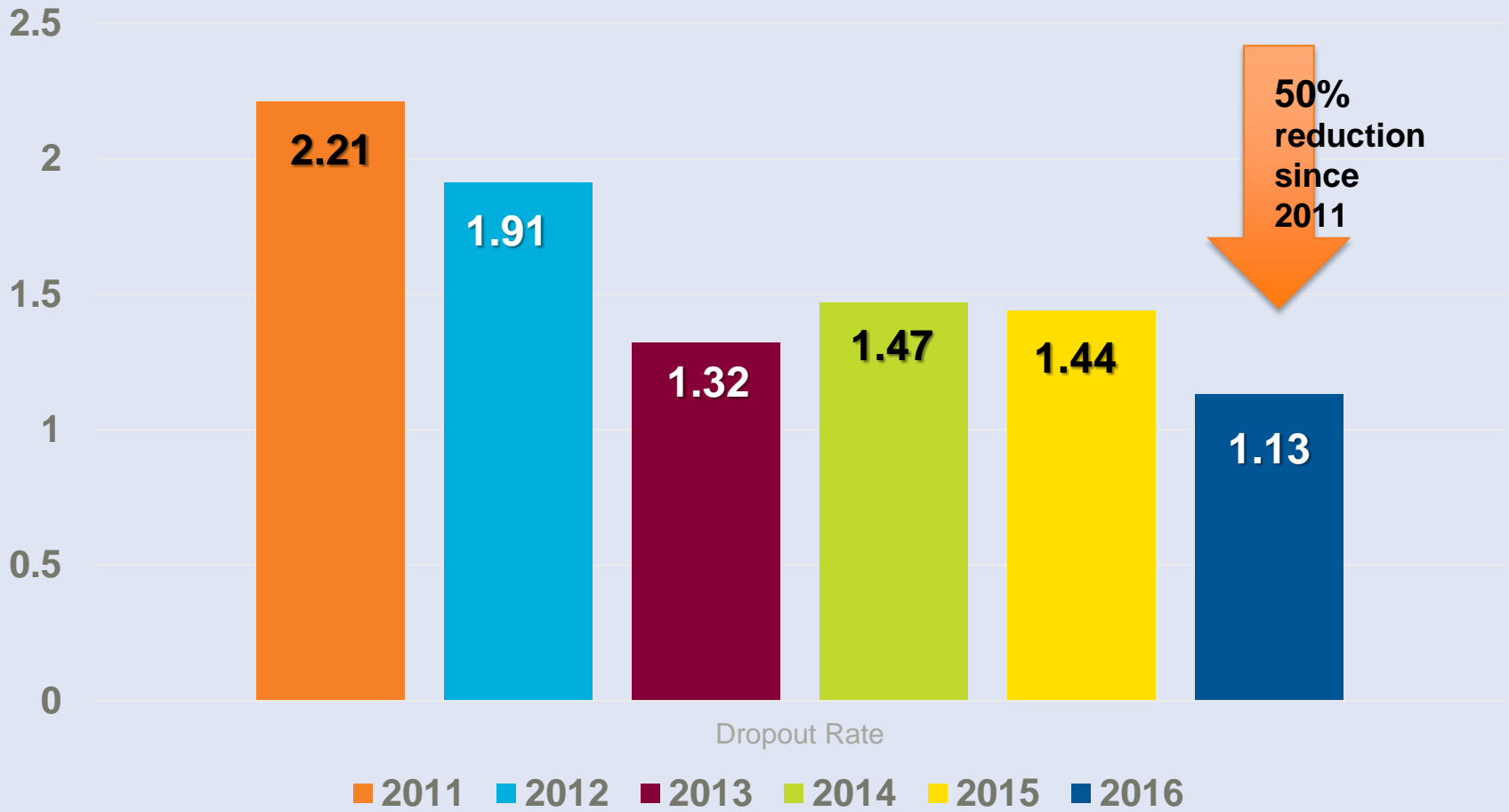
Student Services will use strategic programming and scheduling to increase the percentage of first time freshman being promoted to 10th grade from 92% to 96% by June 2017.

National Model Goals (Actions)

Dropout Prevention (9-12)

- SSS PLT planning
- Review of individual schedules against course selections
- 9th grade lunch and learn sessions
- Quarterly check-ins and letters to parents

WCPSS Dropout Rates



WCPSS School Counseling by the Numbers:

- 148 Elementary School Counselors
- 111 Middle School Counselors
- 132 High School Counselors
- 24 Student Assistance Program (SAP) Counselors
- 5 Transition Counselors
- 133 NBPTS Certified Counselors

WCPSS School Counseling Highlights:

- **NC School Counselor of the Year (2013, 2014, 2015, 2016)**
- **ASCA National School Counselor of the Year Finalist (2014, 2015)**

PLT Support

Elementary

Central

Northeastern

Northern

Southern

Western

Western YR

Middle

6th Grade

7th Grade

8th Grade

MS Leads

High

9th Grade

10th Grade


11th Grade

12th Grade

SAPS

Deans



C-MAPP and Canvas

WAKE COUNTY PUBLIC SCHOOL SYSTEM Modify my account 

2014-2015 ▾ CURRICULUM RESOURCES SEARCH ADMIN ▾ FAQs

K-2 Counseling

Unit	Day	Common Core/Essential Standards	Key Concepts / Instruction
			<ul style="list-style-type: none"> ▪ Character Traits - Careers (Smartboard) <p>SCHOOLWIDE ACTIVITIES</p> <ul style="list-style-type: none"> ▪ Career Day ▪ Career Cafe
Character Ed -			
Character Ed	3	All NCDPI Essential Standards - Guidance ASCA Standards for Students	<p>LESSONS</p> <ul style="list-style-type: none"> ▪ ▪ Be a Good Egg ▪ Brush Up on Respect ▪ Positive Mistakes ▪ Pulling Together ▪ Recipe for Honesty ▪ The Wolf Who Cried Boy ▪ Wall of Respect ▪ Who Needs My Help? <p>RESOURCES</p> <ul style="list-style-type: none"> ▪ Positive Mistakes - Handout ▪ Wall of Respect - Handouts ▪ Who Needs My Help? - Handouts
Counselor Introductions -			
		All NCDPI Essential Standards - Guidance ASCA Standards for Students	<p>LESSONS</p> <ul style="list-style-type: none"> ▪ ▪ K-2 Introduction to Counselor

Trusted sites  100% 

Counselor Consultations

Records Requests	Transcripts/ Credits	PowerSchool
CPS Referrals	LGBTQ	Subpoenas
Bullying/ Harassment	Enroll/ Withdraw Students	Mental Health
Suicide Prevention	Course Registration	Dual Enrollment

Financial Aid Advisors: 8 Advisors Serving 28 Schools

- 1498 individual student meetings
- 708 meetings with families
- 311 classroom visits (over 10,000 students)
- 21 Financial Aid Workshops
- 128 Professional contracts
- 397 Counselor Consultations
- FAFSA completion rate of 59% in 2016

Central Records

- Requests for records received by mail, fax, walk-in, and online
- DSS, DMV, Passport Agency, Visas, Law Firms, Businesses, Colleges/Universities, Individual Requests
- Over 15,000 Requests Processed in 2015-2016

Current School Counselor Ratios

ASCA Recommended Ratio – 1:250

Elementary 1:630

Middle 1:372

High 1:393

Questions?

