

BOUNDARY/ENROLLMENT Board Feedback Session



November 21, 2024

Goals of the Board Study Sessions

In order to determine the scope, timing, future discussions and/or decisions related to boundaries, the Board will be able to understand:

What boundaries look like and how they have changed



School site composition (what students attend and where they reside)



Historical and forecasted changes in each boundary area and in each school site enrollment

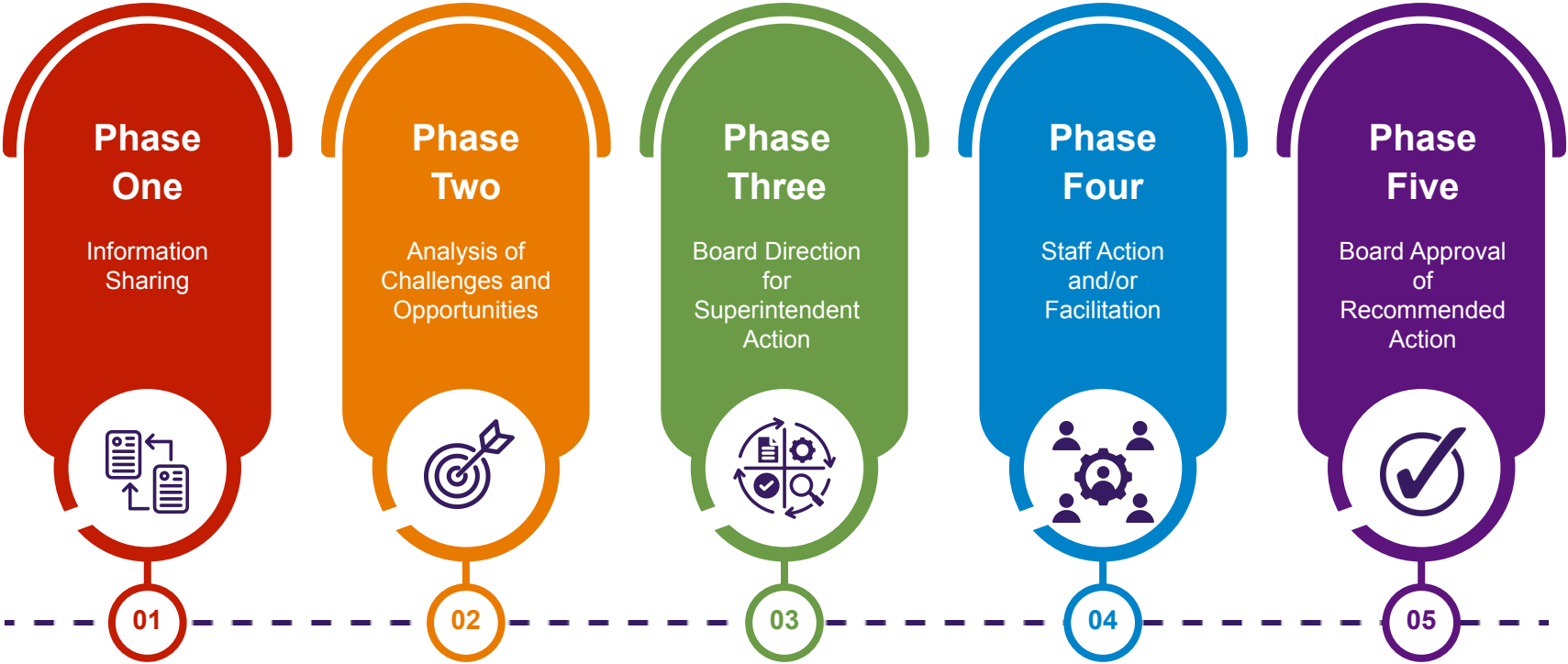


Boundary and enrollment challenges and opportunities over the next decade

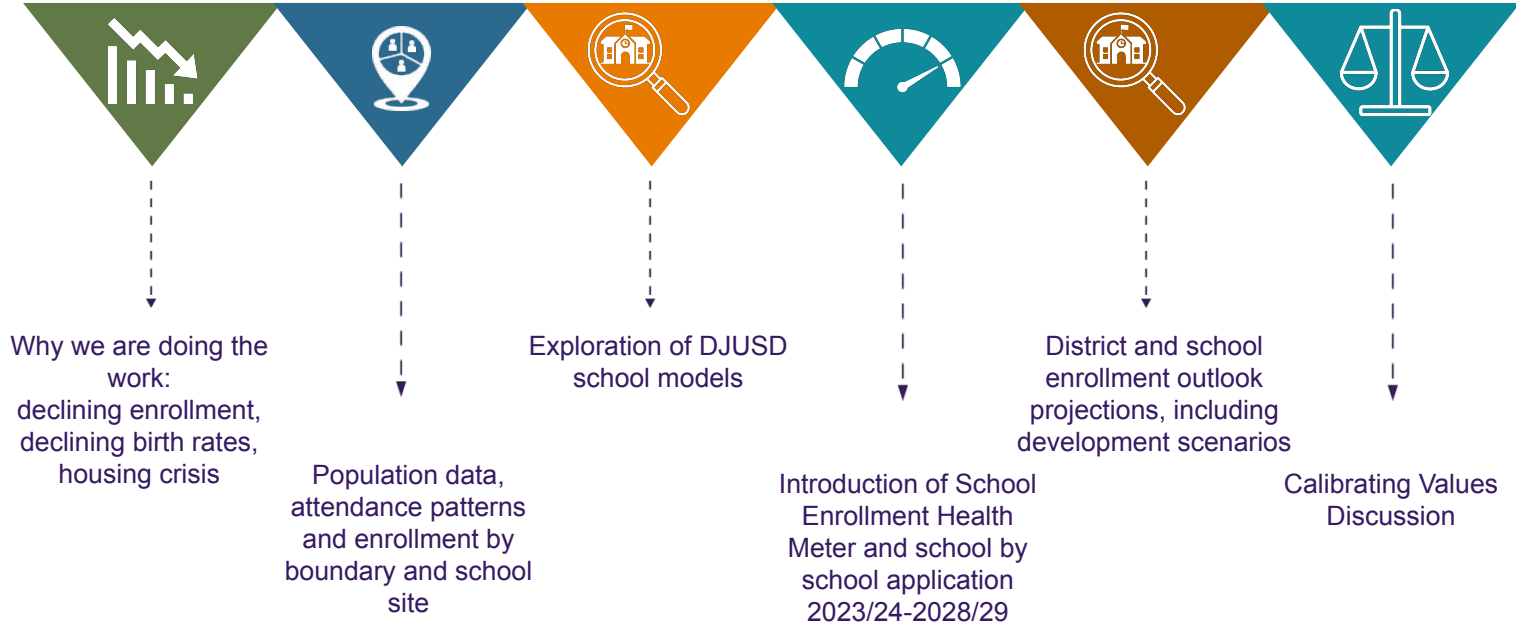


Values that undergird the system that help to define boundaries

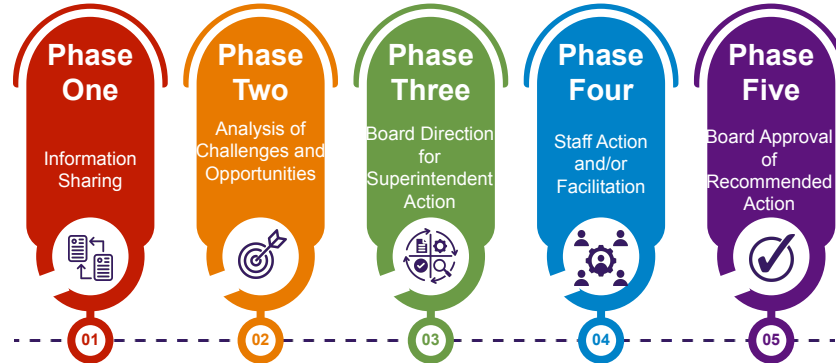
Phases of Discussion















Review From Previous Board Study Sessions



Trustee Feedback and Discussion



Key Events

<p>SY 24/25</p>	<p>Fall 2024 Board Study Sessions (Phases 1-3)</p> 		<p>Jan 2025 Phase 4 Begins</p> 	<p>March 2025 Davis Demographics report</p> 			
<p>SY 25/26</p>	<p>Aug 2025 Enrollment update</p> 		<p>Nov 2025 Village Farms vote</p> 		<p>March 2026 Davis Demographics report</p> 	<p>April 2026 Boundary Phase 5 Decision point #1</p> 	<p>June 2026 Shriners Property vote</p> 
<p>SY 26/27</p>	<p>Aug 2026 Enrollment update</p>  <p>Option for Boundary change for 26/27</p>				<p>March 2027 Davis Demographics report</p> 	<p>April 2027 Boundary Phase 5 Decision point #2</p> 	
<p>(Boundary Change window #1 - for 2026/2027)</p>							
<p>SY 27/28</p>	<p>Aug 2027 Enrollment update</p>  <p>Option for Boundary change for 27/28</p>						
<p>(Boundary Change window # 2 - for 2027/2028)</p>							

Next Steps

Part 4

- **November 21** - Receive Board Feedback
- **January Meeting-**
 - Staff to provide a recommendation
 - Board Direction for Superintendent Action (Phase 3)

