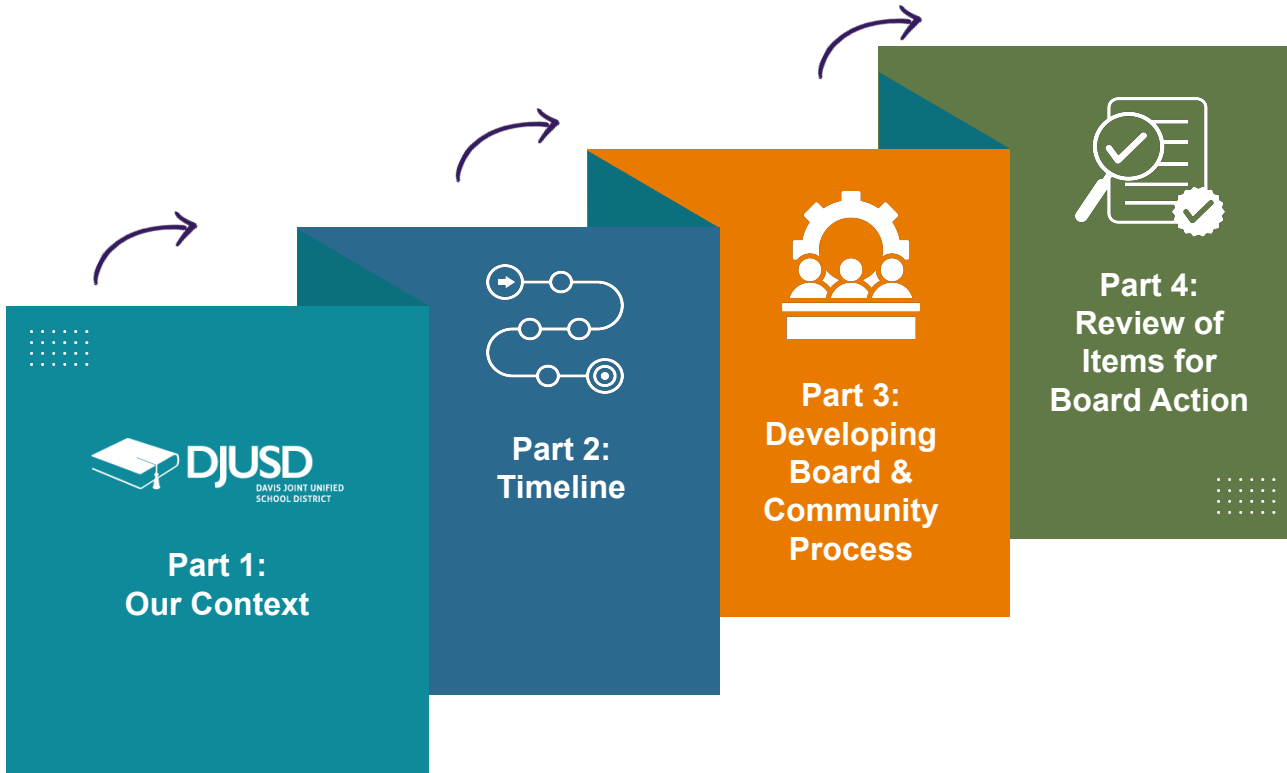


# BOUNDARY/ENROLLMENT Study Session 5

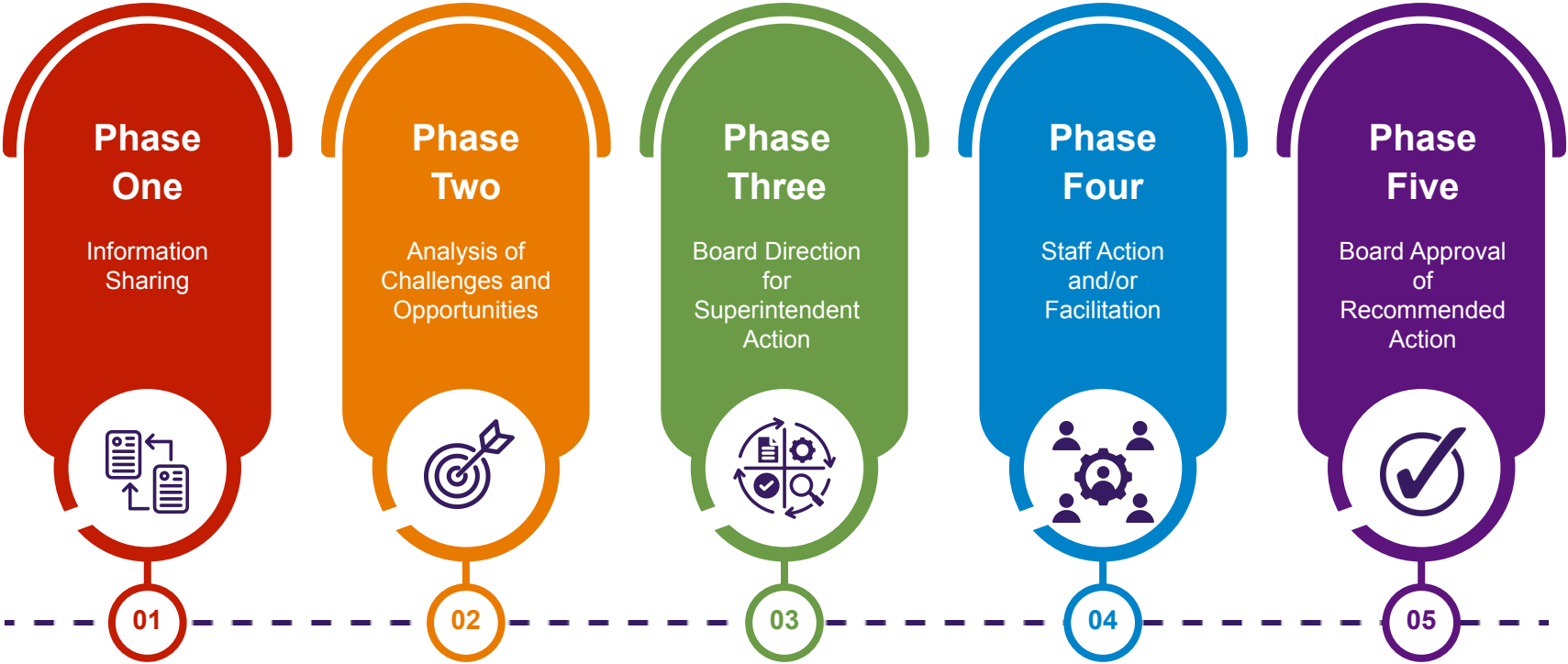


January 16, 2025

# Agenda



# Phases of Discussion



# Part 1: Our Context



# Declining Enrollment

## Total Enrollment TK-12

■ Non-Resident Students TK-12
 ■ Resident Students TK-12

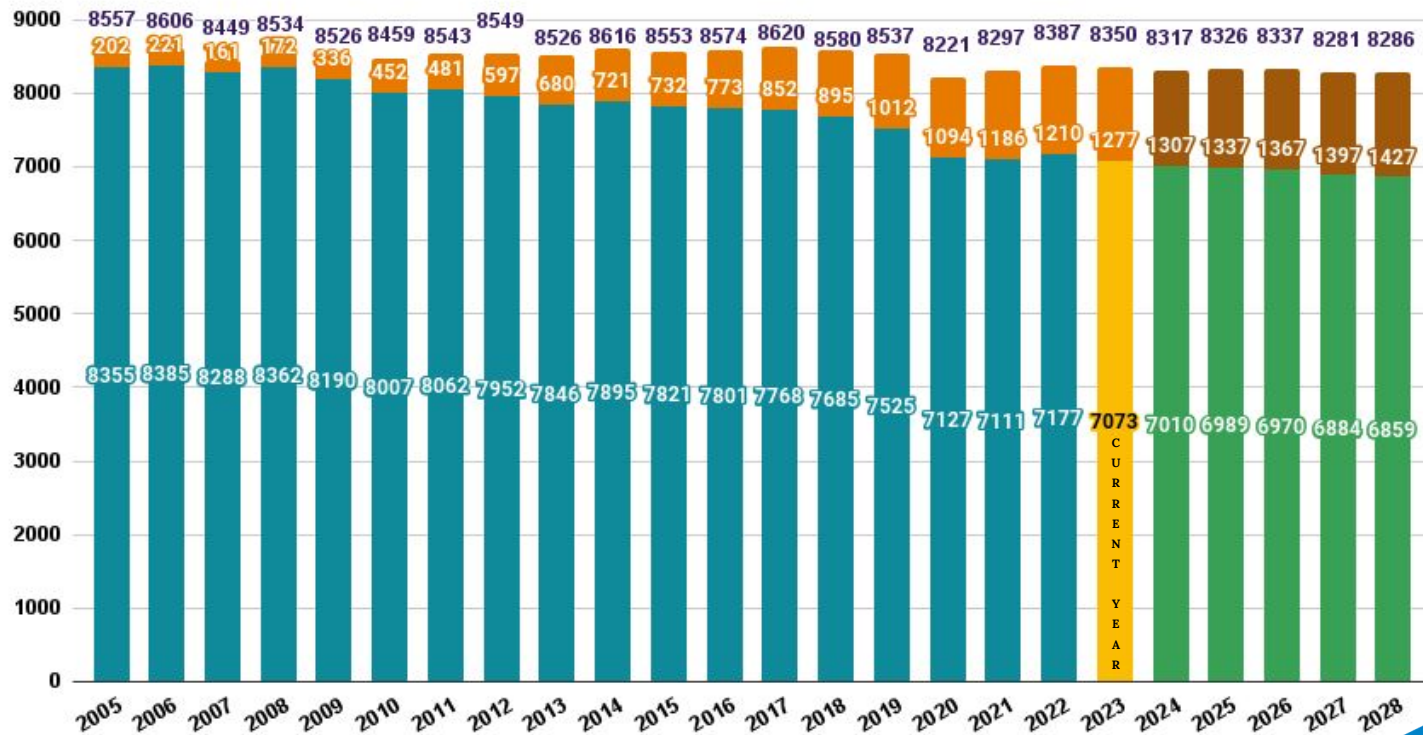
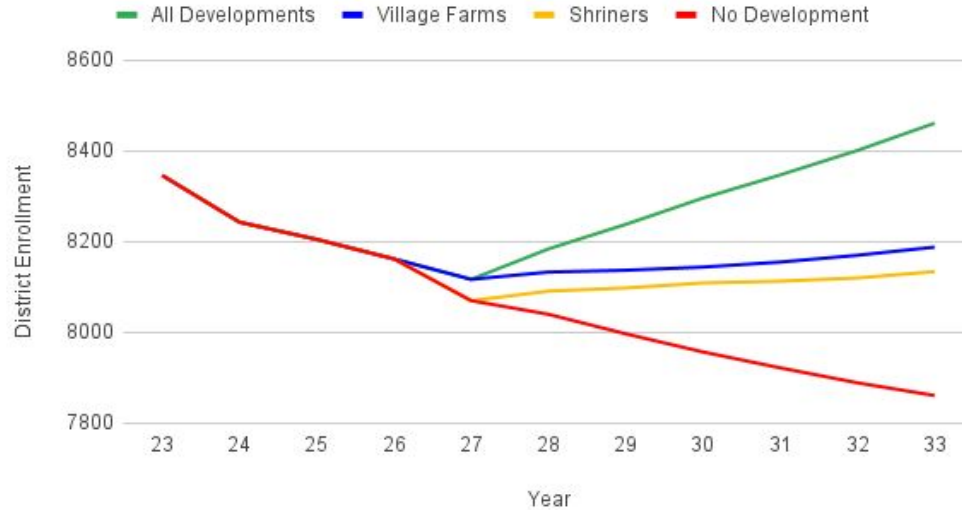


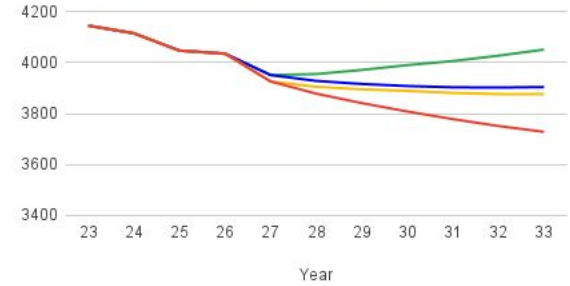
Chart data from Fall 2023/24 Davis Demographics MGT report. Forecast based on student data as of 10/4/23.

# Scenario 4: All Developments

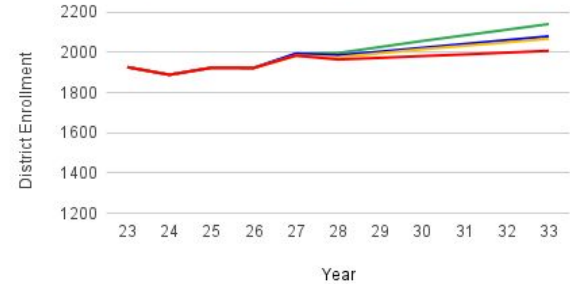
## All Developments- DJUSD



## All Developments- Elementary Schools



## All Developments- Junior High Schools



## All Developments- High Schools



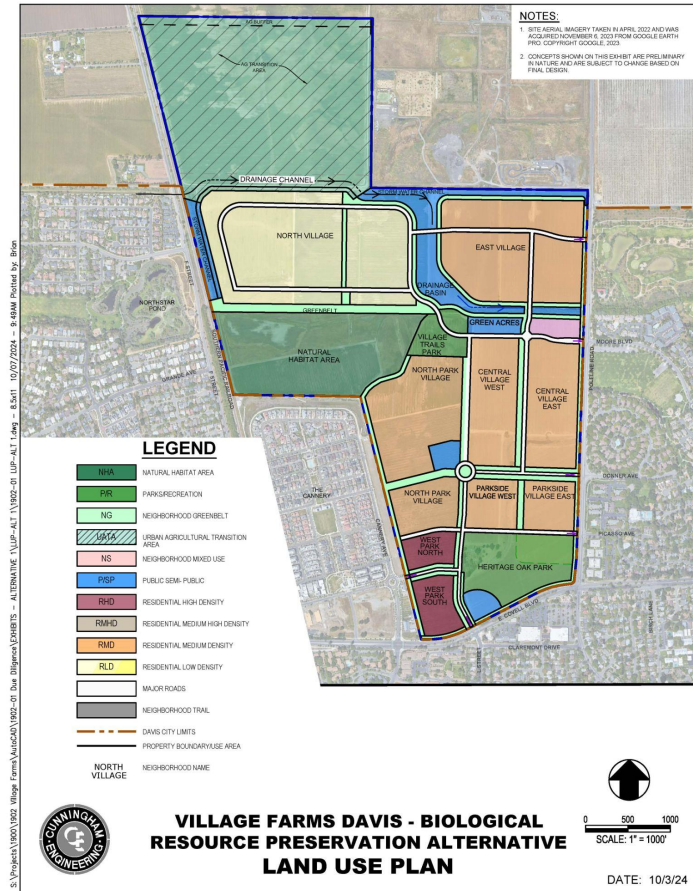
# Proposed Development

## Facts About Village Farms

- Ballot Date: November 2025
- ~1800 Units
- Estimated Student Yield: 701
- Estimated completion: 2041

**Location:** north of Covell Blvd and north and east of the Cannery

**Boundary:** North Davis/Holmes/Davis Senior High



# Proposed Development

## Facts About Shriners Property

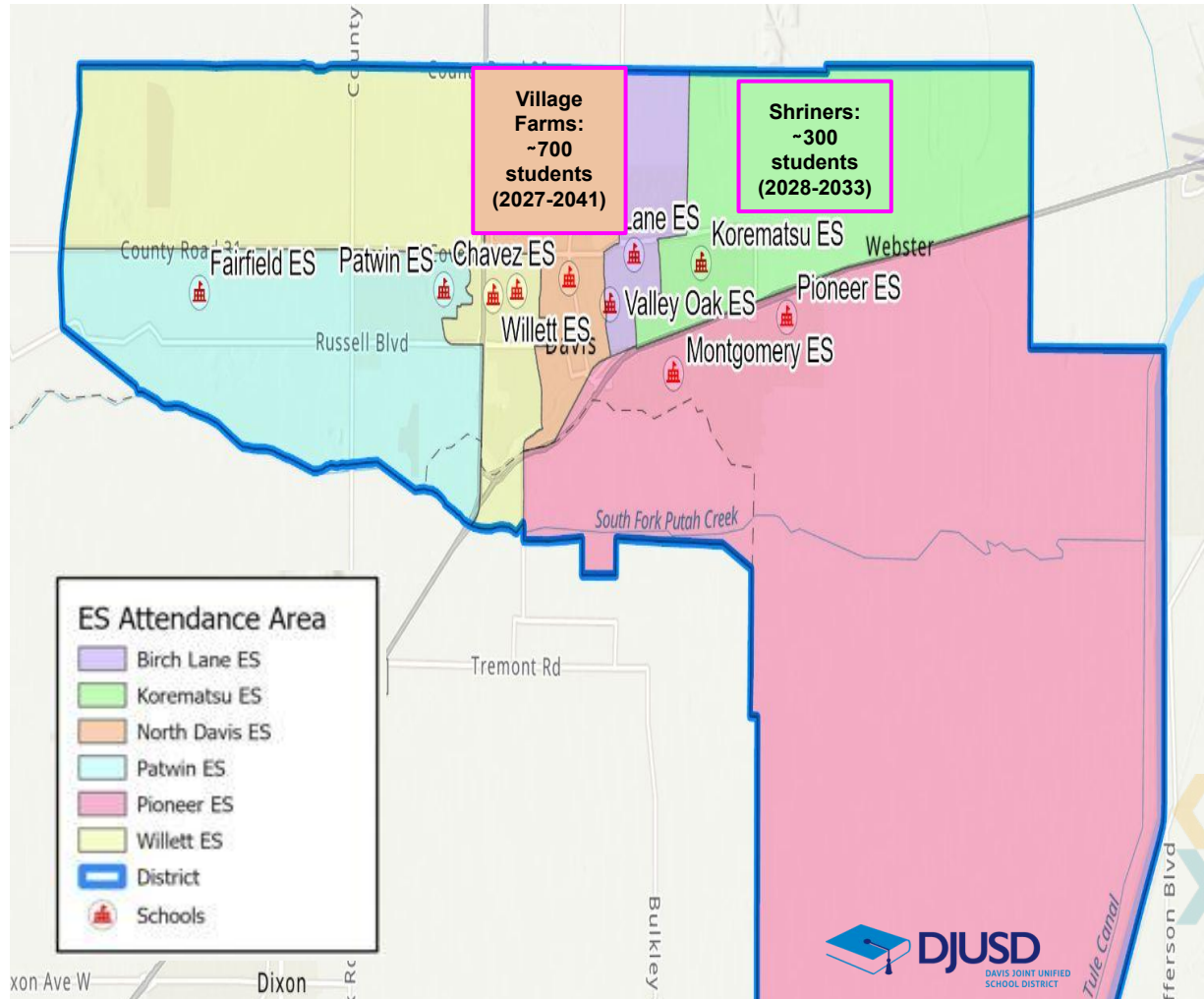
- Ballot Date: June 2026
- ~1200 Units
- Estimated Student Yield: 273
- Estimated completion: 2033

**Location:** north of Covell Blvd and west of Wildhorse neighborhood

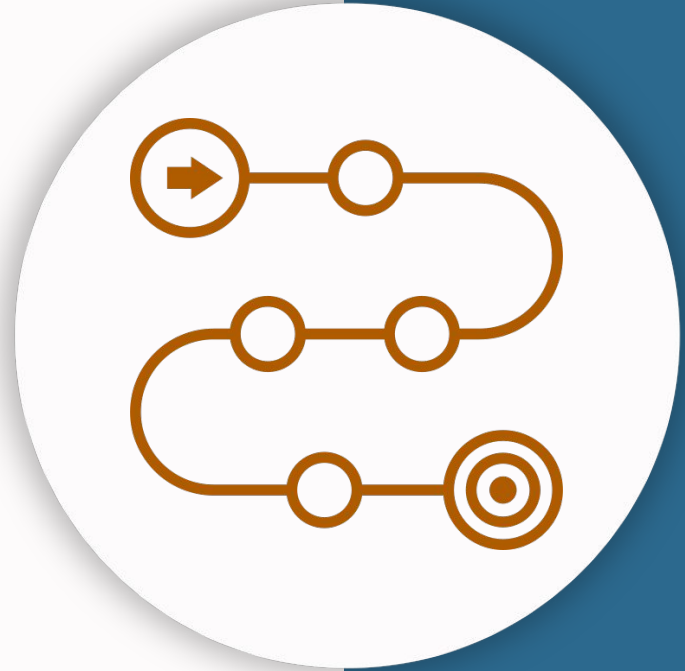
**Boundary:** Korematsu/Harper/Davis Senior High



# Current Elementary Boundaries With Where Proposed Development Would Be Located

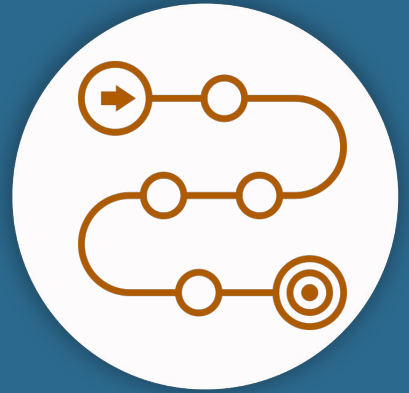


# Part 2: Timeline



# Factors Guiding Our Timeline

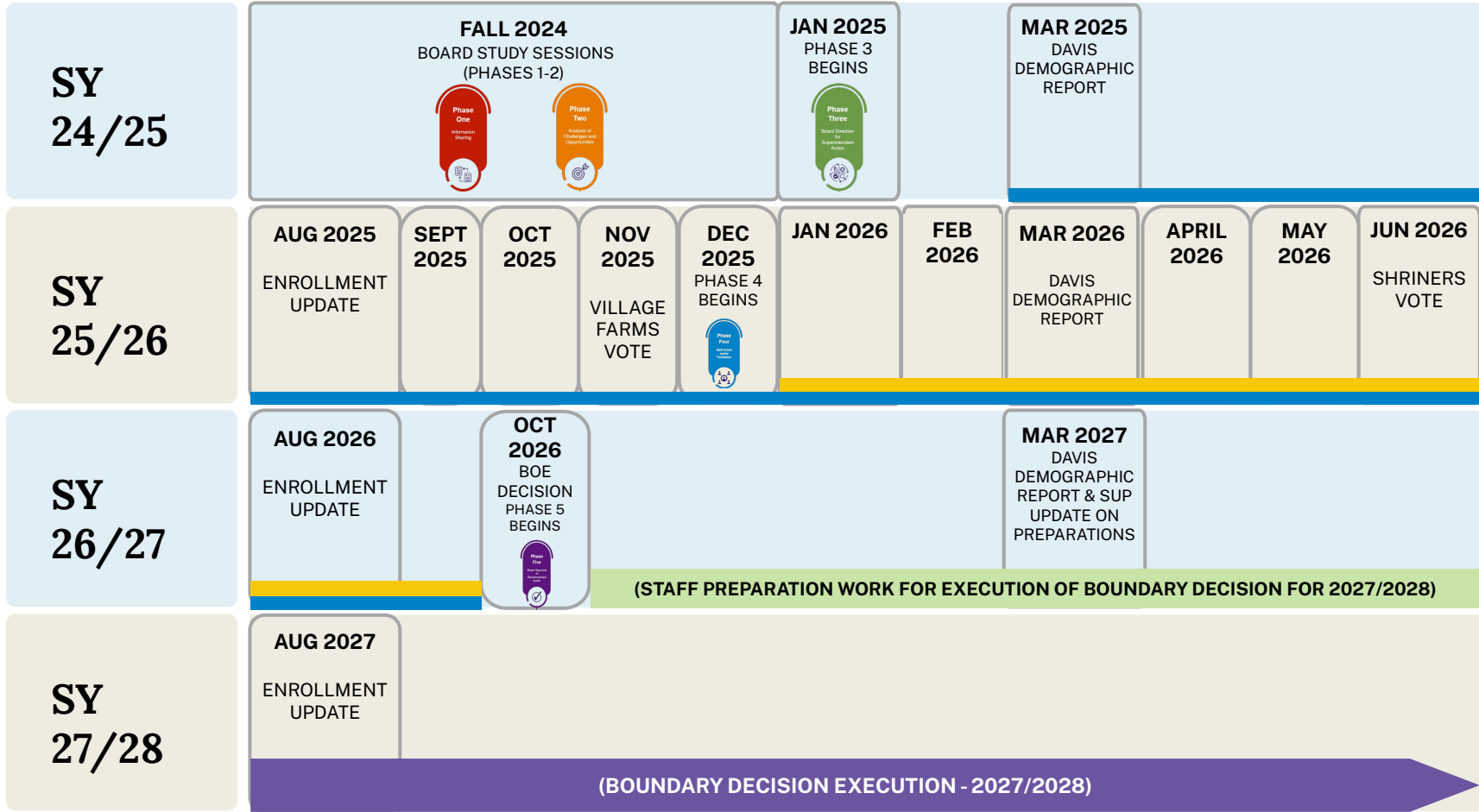
- **Annual Demographics Reports (March)**
- **Annual Actual Enrollment (September)**
- **State and District Budgets Within Multi-year Projections**
- **Village Farms Development**
  - Expected Vote - November 2025
  - Expected Build-out - 701 students by 2041
- **Shriners Development**
  - Expected Vote - June 2026
  - Expected Build-out - 273 by 2033



# UPDATED TIMELINE

Board Member Community Education

Community Process



# Part 3: Developing Board and Community Process



# Developing Board & Community Process

## Scope

- Are there parameters that the Board needs to set ahead of any community process?
  - Are there conditions where the timeline or community process would change once begun?
  - Are there school models we are not willing to entertain?
- Do we want the community to ideate solutions or vet staff-developed ideas?

## Structure

- Do we want a committee(s)?
  - What would be the composition of committee(s)?
  - What authority would they have?



# Part 4: Items for Board Action



# Items for Board Action

## Phase Three Decision Point

- Provide Direction Regarding Timeline (Tonight)
- Provide Direction Regarding Community Process (at future Board Meeting)

