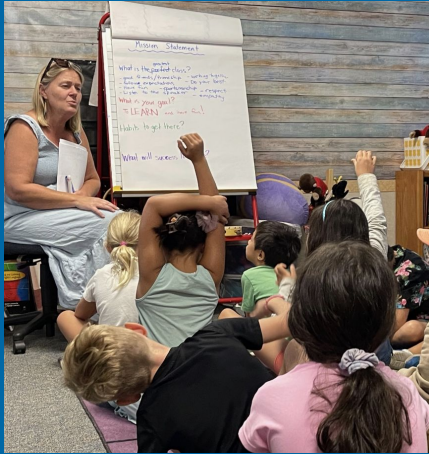


Village Elementary School Continuous Improvement Update

Governing Board Presentation • January 23, 2025
Teaching and Learning

CUSD Core Values

We Are Learners



We Are Collaborators



We Are Community Builders



Continuous Improvement Tied to District Pillars



SUCCESSFUL STUDENTS

- Academic growth and proficiency
- Sense of belonging for all
- Engagement through excellent attendance



SAFE AND ADAPTIVE INFRASTRUCTURE

- Aligned systems and processes
- Safe and clean schools
- Transparent management of resources aligned to identified needs



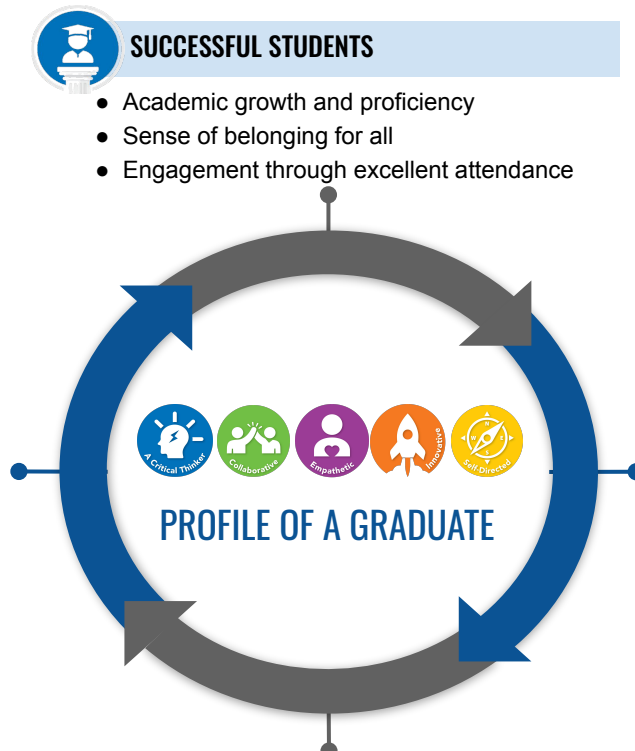
SUCCESSFUL STAFF

- Quality hiring and retention
- Inclusive and diverse culture
- Shared core values and focus on growth based feedback



ENGAGED FAMILIES AND COMMUNITIES

- Academic growth and proficiency
- Sense of belonging for all
- Engagement through excellent attendance



2024-2025 Village School Themes



Effective Communication



Continuous Improvement



Core Values - Empathy & Respect

"I feel students are nice or show respect to each other at my school."



Safe and Adaptive
Infrastructure



**SAFE AND ADAPTIVE
INFRASTRUCTURE**

Studer Student Survey:

Reach and maintain 4.5 by 25-26

1. I feel safe at my school.

22-23	23-24	24-25	25-26
4.22	4.03		



Spotlight: Diversity & Equity Impacts

Equity Problem of Practice

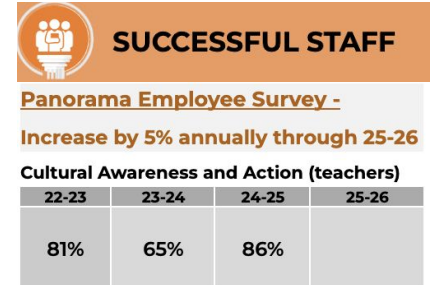
“How does our data on Cultural Awareness and Action affect or reflect our teaching and learning with our students?”

Supporting Difficult Conversations

- Setting Norms
- Striving for Brave Spaces
- Evidence based reflection and planning



Successful
Staff



Village
School



What Are We Learning? Data Supporting Improvement

Cultural Awareness and Action (Student Focus)

86%




80th-99th percentile

 **14**
Greatest increase

QUESTION

- How often do you think about what students of different races, ethnicities, or cultures experience?

100% 
responded favorably

QUESTION

- How often are students given opportunities to learn about people from different races, ethnicities, or cultures?

88% 
responded favorably

QUESTION

- At your school, how often are students encouraged to think more deeply about race-related topics?

100% 
responded favorably

QUESTION

- How confident are you that adults at your school can have honest conversations with students about race?

75% 
responded favorably

QUESTION

- How often do students at your school have important conversations about race, even when they might be uncomfortable?

100% 
responded favorably

QUESTION

- How well does your school help students speak out against racism?

71% 
responded favorably

QUESTION

- When there are major news events related to race, how often do adults at your school talk about them with students?

100% 
responded favorably

QUESTION

- How comfortable are you discussing race-related topics with your students?

50% 
responded favorably



The Big Picture



While our focus this year has been on the adult learners in our community, we know that, as our staff increases their knowledge and skills around culturally responsive teaching, this will have a beneficial effect on student experience and engagement.



Transformative Family Engagement

The Challenge

- Fewer families are available to volunteer for core activities, such as Project Cornerstone and Centers
- Some families have less flexible work schedules for weekly volunteer shifts

Response

- Prioritize when we ask for volunteers to maximize impact (eg., small group instruction/intervention, centers, field trips & yard duty)
- Rethinking Village Parent Ed. Training - make it more accessible and relevant for families.
 - 15-minute refreshers during Community Meetings
 - Book Clubs will replace some parent education classes
 - Variety of opportunities for families to engage with staff and each other
 - School Site Council, English Learner Advisory Committee, Coffee with the Principal, Courtyard Coffee, Class Socials
- Streamlining and improving communication



Engaged Families
and Communities



The Big Picture

4 Principles of Transformative Family Engagement

INCLUSIVE

Embracing and valuing diverse perspectives.



INDIVIDUALIZED

Meeting the unique needs of every family and child.



INTEGRATED

Connecting and aligning with the educational system.



IMPACTFUL

Empowering families to support their child's success.



NEWARK, NJ





Successful
Students

Village Empowers Learning, Community

Collaborative Teaching Teams:

- Support co-ownership and problem solving towards intervention and extension of student learning
- Plan-Do-Study-Act (PDSA) Cycles
- Evidence-based planning during Professional Learning Community (PLC) time

Multiage Classrooms:

- Support collaboration across teams
- Provide opportunities for older students to act as mentors
- Create greater opportunities for relationship building since most students will loop with their teachers for 2 years



SUCCESSFUL STUDENTS

Studer Student Survey:

Reach and maintain 4.5 by 25-26

1. I set learning goals and track my progress.

22-23	23-24	24-25	25-26
3.84	3.66		

2. I believe my teachers ask me how I learn best.

22-23	23-24	24-25	25-26
3.78	3.84		



The Big Picture



Multi-age Classrooms at Village School



Next Steps

Equity Problem of Practice (EPOP)

- Conduct Empathy Interviews
- Identify & try strategies to improve our practice

Essential Standards and Curriculum Support

- Continue to build upon the foundation of PLC and CFA work that was started last year
- Focus on ensuring access to essential grade-level curriculum

Master Schedule

- Align prep and academic blocks to support staff collaboration and allow for opportunities to regroup students for interventions and enrichment



CFA=Common Formative Assessment



