

2021-22 ACCOUNTABILITY RESULTS



DISCUSSION POINTS

Review NC
Accountability
Model

Share
School and
District Data

Share
Next
Steps

Highlight
Areas of
Success

Highlight
Areas of
Opportunity



ACCOUNTABILITY DEFINITIONS

SCHOOL PERFORMANCE GRADE (SPG)	The grades are based on each school's achievement score (weight of 80%) and each school's students' academic growth (weight of 20%). This score is converted to a 100-point scale and then used to determine a school performance grade of A, B, C, D or F.
PERFORMANCE COMPOSITE SCORES	Percentage of student test scores that are considered grade-level proficiency or above.
GRADE LEVEL PROFICIENCY (GLP)	The percentage of students who scored a level 3, 4, or 5 Level 3: Sufficient Understanding Level 4: Thorough Understanding Level 5: Comprehensive Understanding
COLLEGE AND CAREER READY (CCR)	The percentage of students who scored a level 4 or 5



SCHOOL PERFORMANCE GRADES 2021-2022

ELEMENTARY & MIDDLE

Reading EOG Scores
Math EOG Scores
NC Math 1 EOG Scores
Science EOG Scores

English Learner
Progress

Growth



HIGH SCHOOL

English II EOC Scores
Math I & 3 EOC Scores
Biology EOC

ACT

WorkKeys

English Learner Progress

Math Course
Rigor

Growth

Graduation Rates





CELEBRATION HIGHLIGHTS

CHATHAM
COUNTY SCHOOLS

89.5% of schools Met or Exceeded Growth

17 of 19 schools met or exceeded growth expectations. Chatham students made significant gains during the 2021-2022 school year.



ELEMENTARY,
MIDDLE, & K-8



100%

MET OR EXCEEDED
GROWTH

GRADES 3-8



100%

EXCEEDED STATE
AVERAGE IN EVERY
TESTED SUBJECT



ACT Scores



115 Districts in NC

*11 points above
the state average



HIGHEST GROWTH INDEXES

Anything above +2 is
exceeding growth



+8.32 Perry Harrison

+6.3 Seaforth

+3.8 Margaget B. Pollard

+3.74 Virginia Cross

+3.61 North Chatham

+2.53 CSSE

+2.28 Moncure

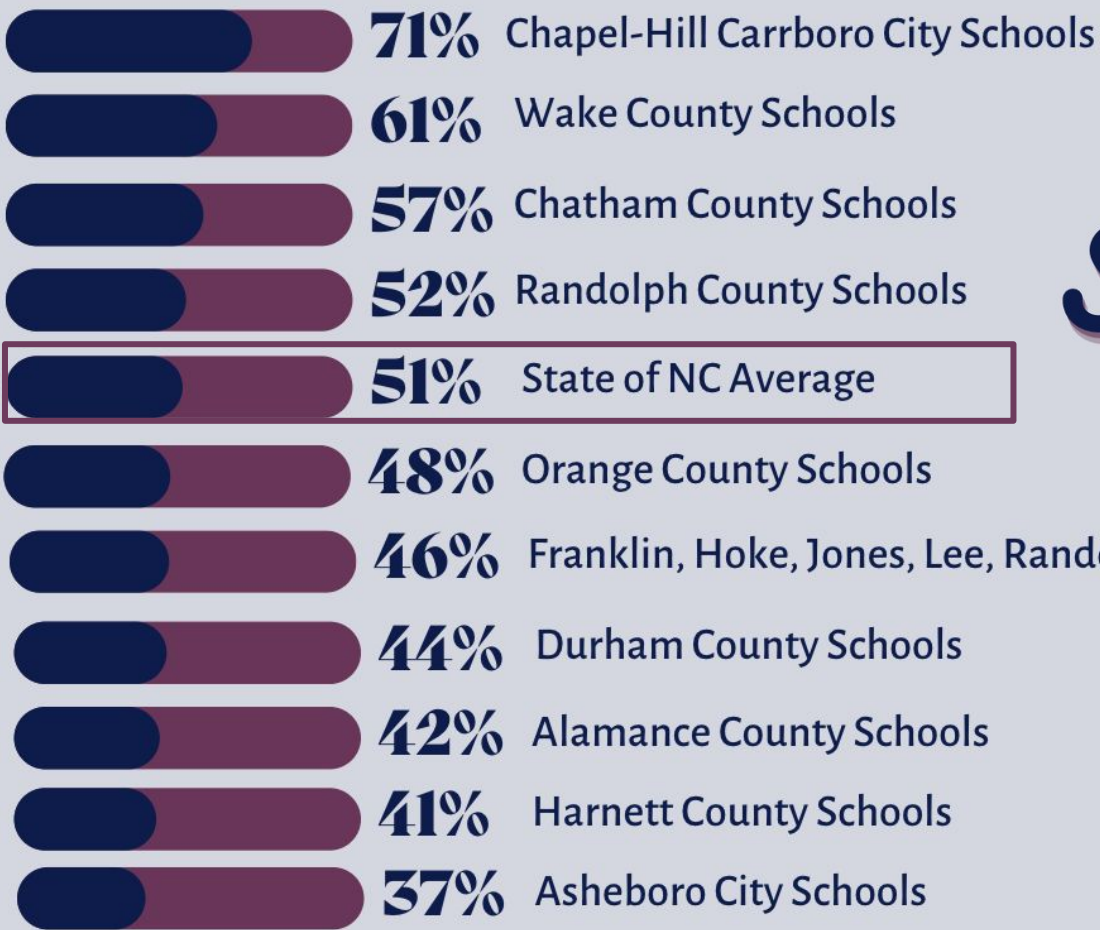




**of CCS schools increased
performance composites**

Increased Composites

Chatham schools showed significant gains in composite scores. These scores are a combination of all assessment measures. A gain of 3–5 points is good. Chatham had schools that earned gains of 5, 10, 15 and even 20 points. Our students and staff worked hard!



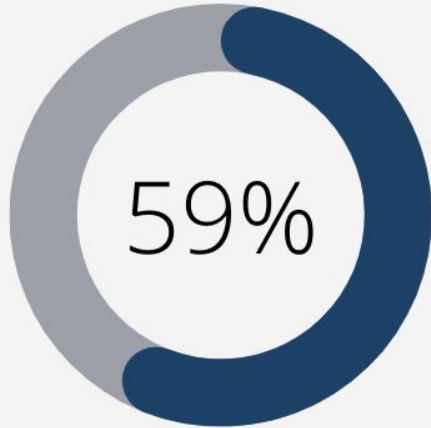
*Above the
State and 3rd
in Region*

**GLP Performance
Composite**

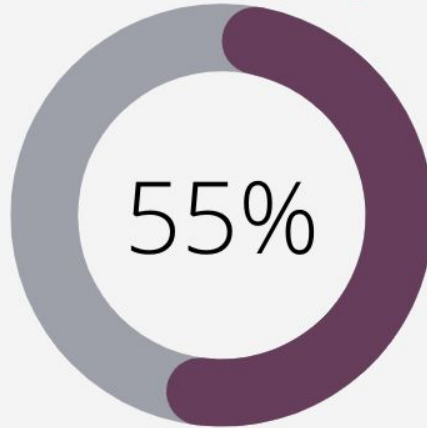


3rd in Region

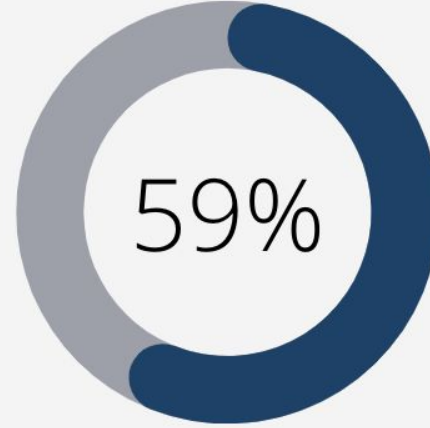
3-8 EOG



3-8 Reading

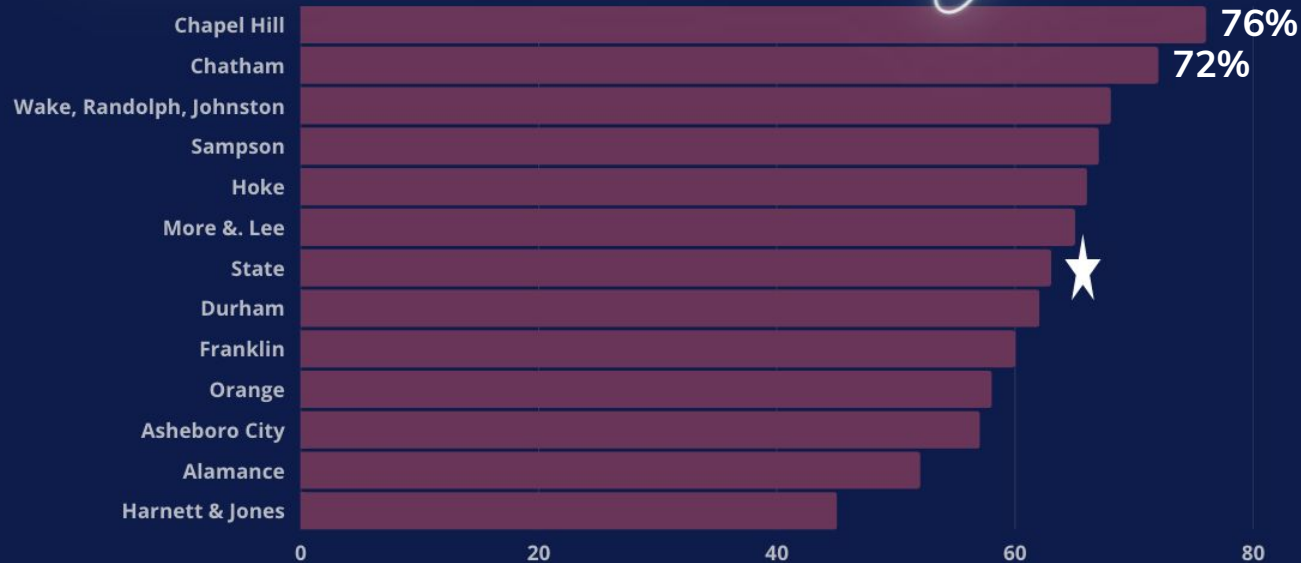


3-8 Math

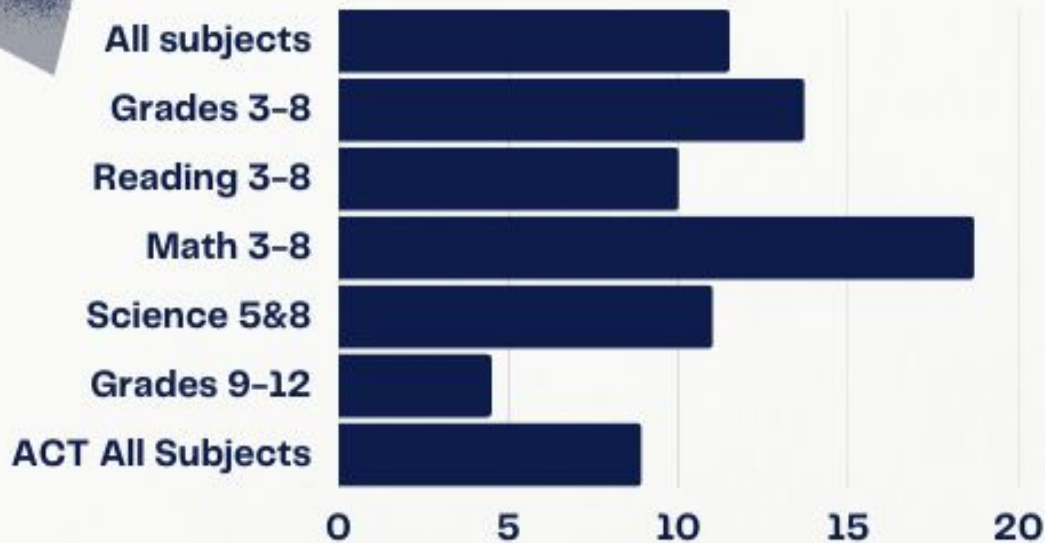


5TH GRADE SCIENCE

2nd in the Region



*CCS Grew in
Every Tested
Subject &
Every Grade*





PERFORMANCE GRADES

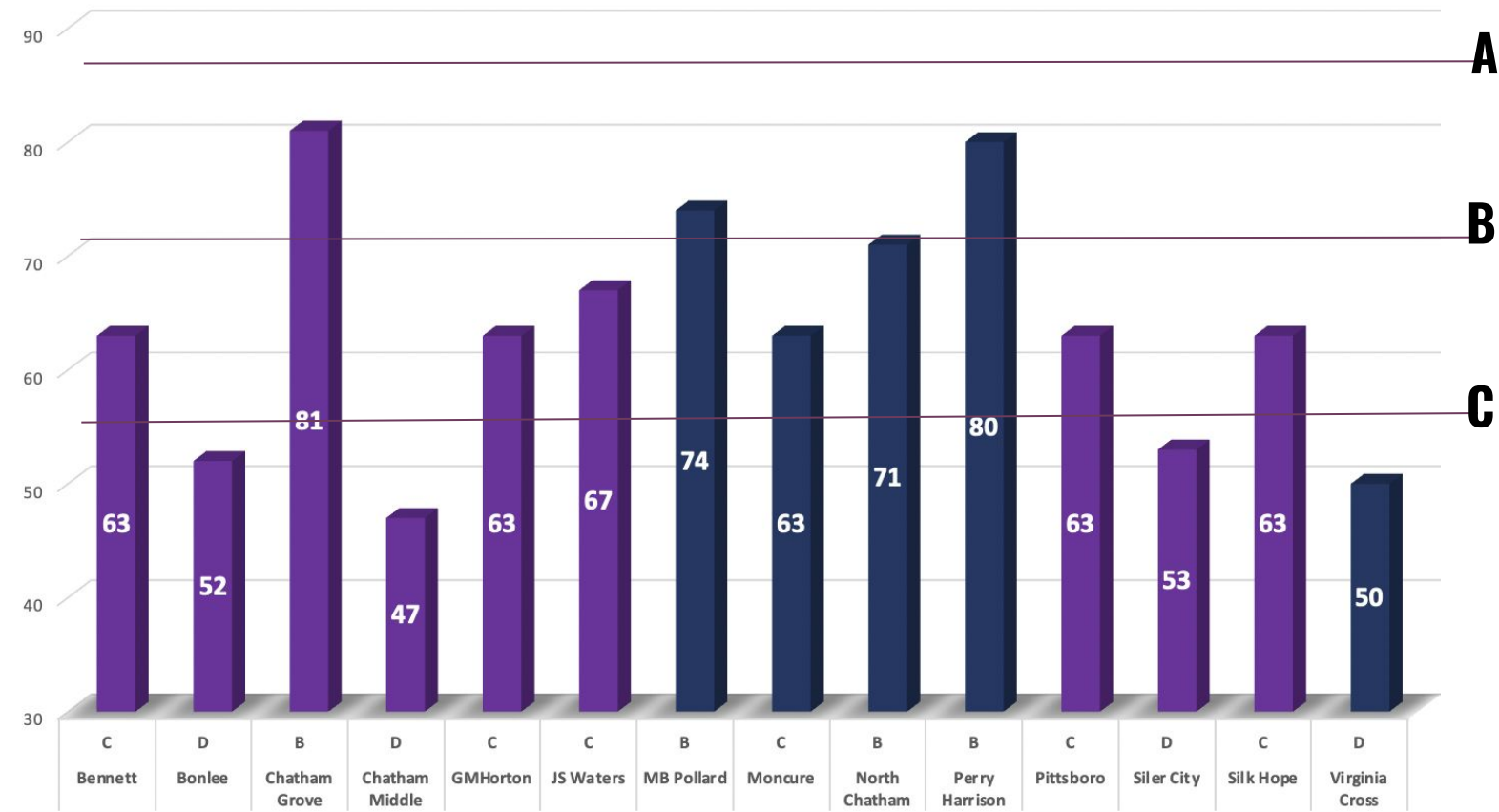
CHATHAM

COUNTY SCHOOLS

ELEMENTARY & MIDDLE PERFORMANCE GRADES

A	85-100
B	70-84
C	55-69
D	40-54
F	<40

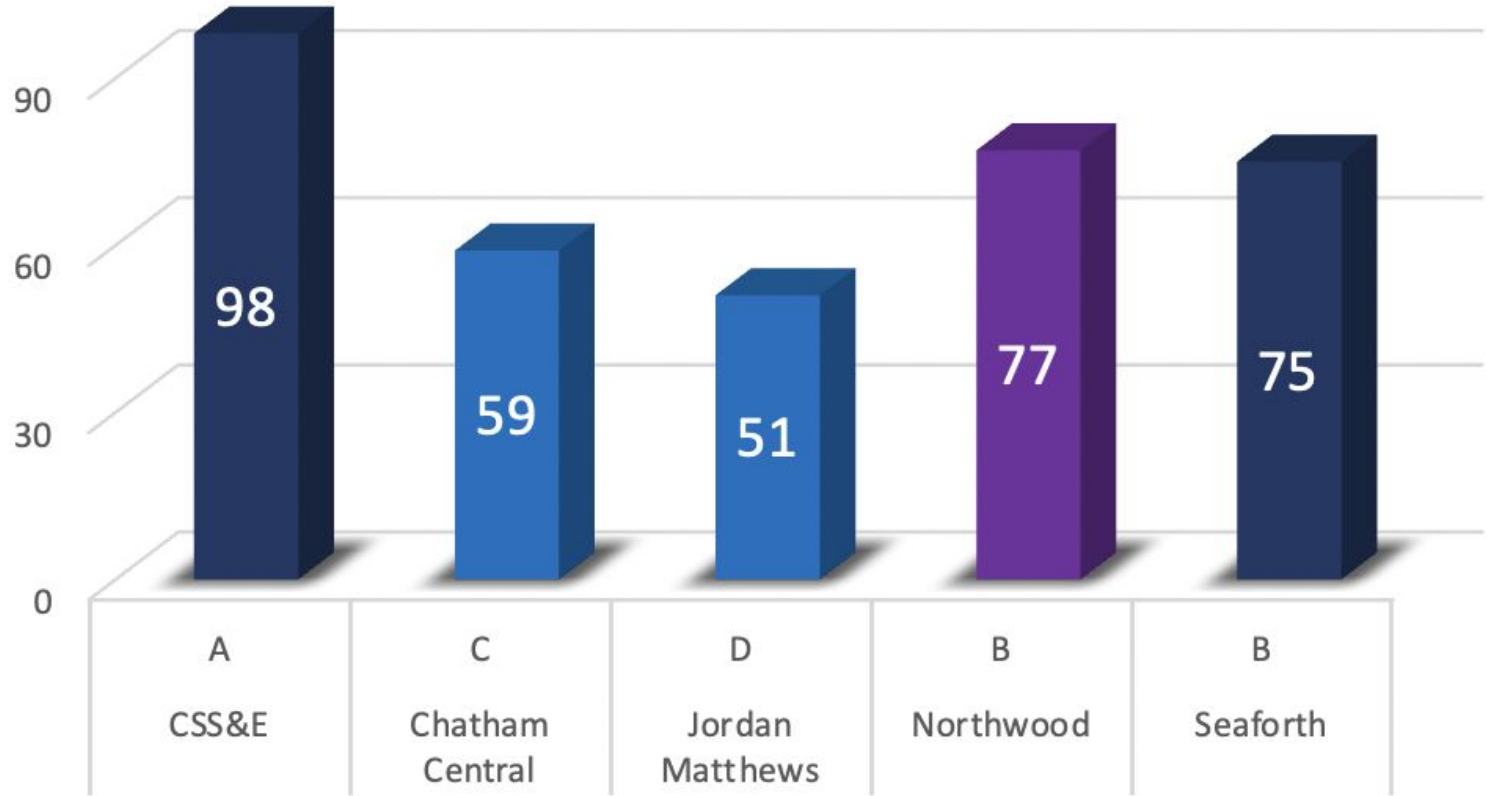
Met
Exceeded



HIGH SCHOOL PERFORMANCE GRADES

A	85-100
B	70-84
C	55-69
D	40-54
F	<40

Met
Exceeded
Not Met



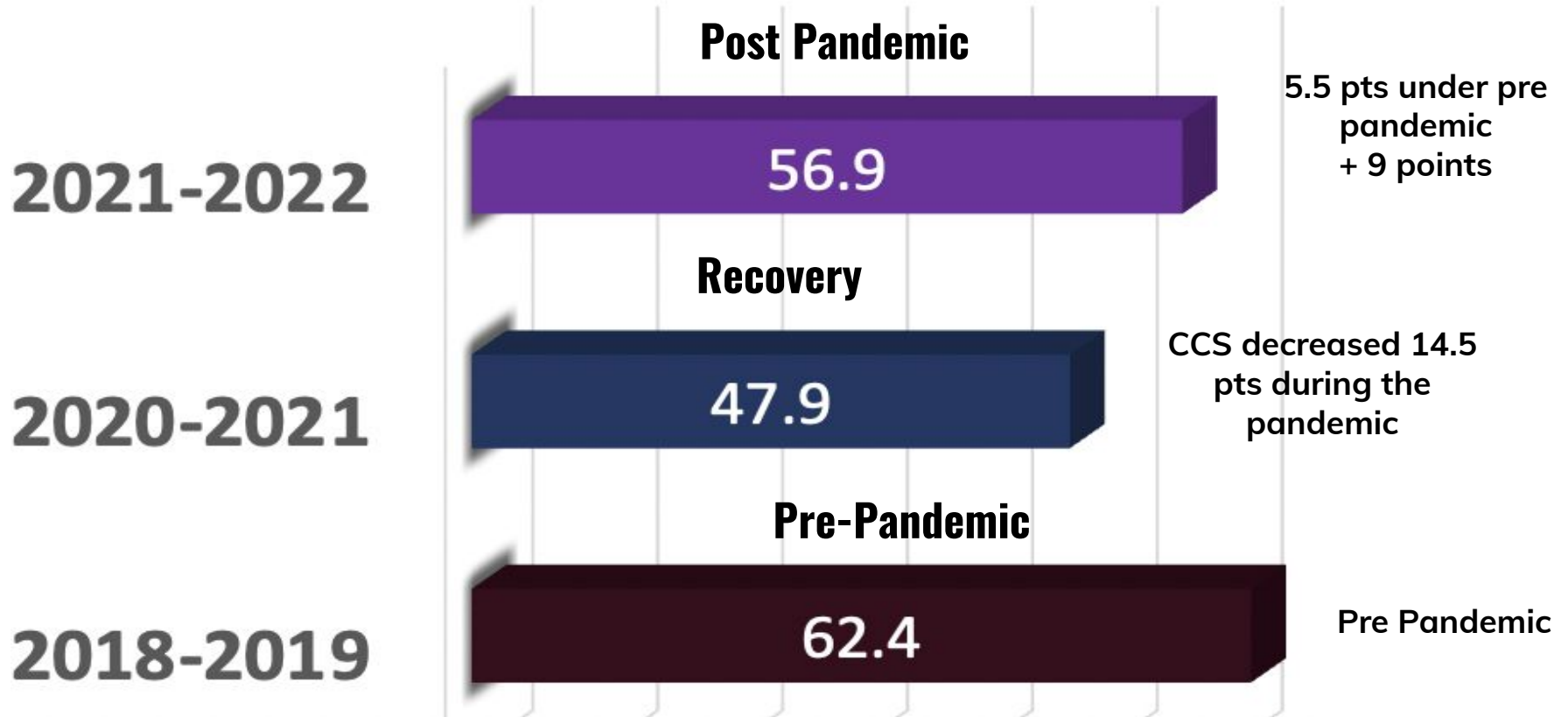


PERFORMANCE COMPOSITES

C H A T T A M
C O U N T Y S C H O O L S

DISTRICT PERFORMANCE COMPOSITE

PRE- AND POST PANDEMIC



Data Highlights

+17.7

4th Grade
Reading

+17.1

5th grade
Science

+13.9

6th Grade
Math

+23.6

8th Grade Math

+9.2

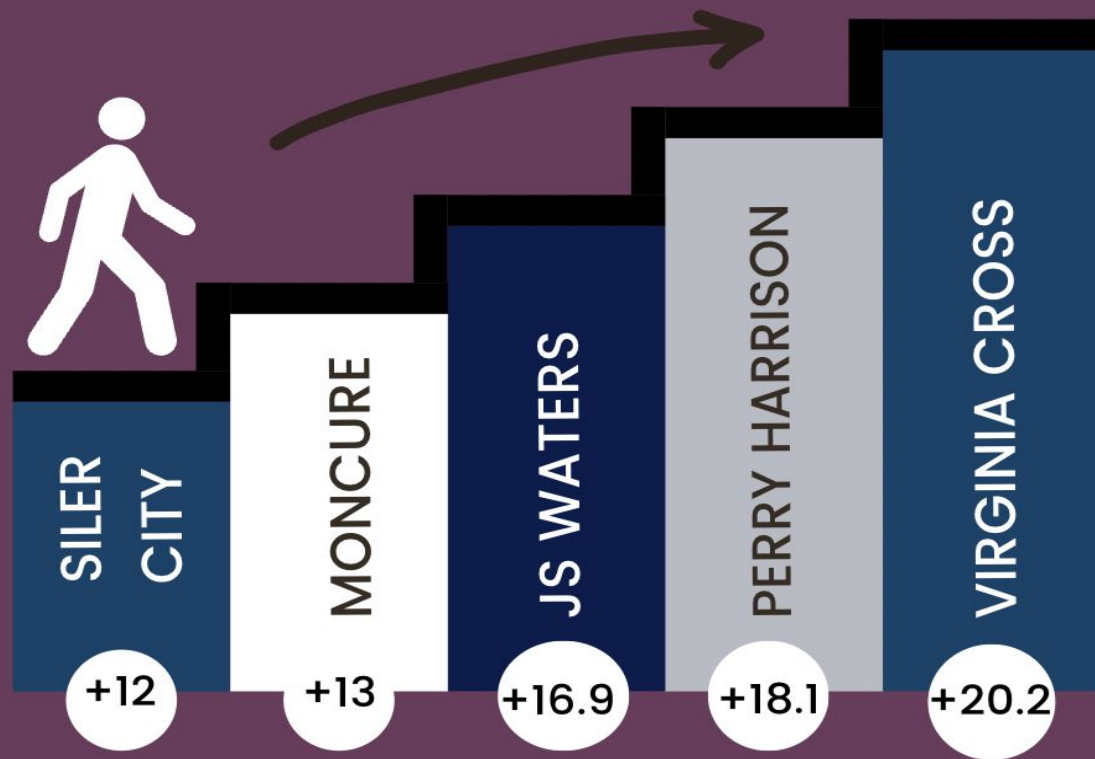
Math 3

+10.8

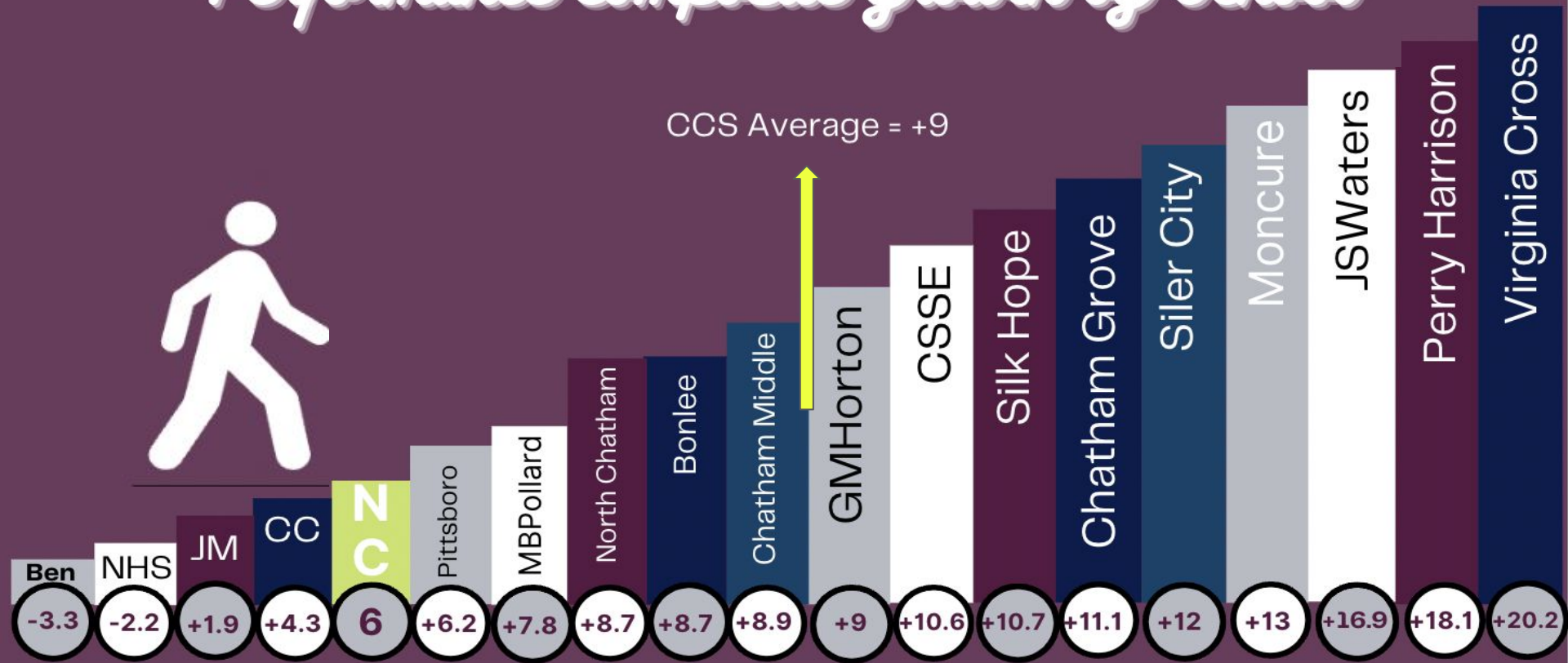
HS Biology



Performance Composite Growth Highlights

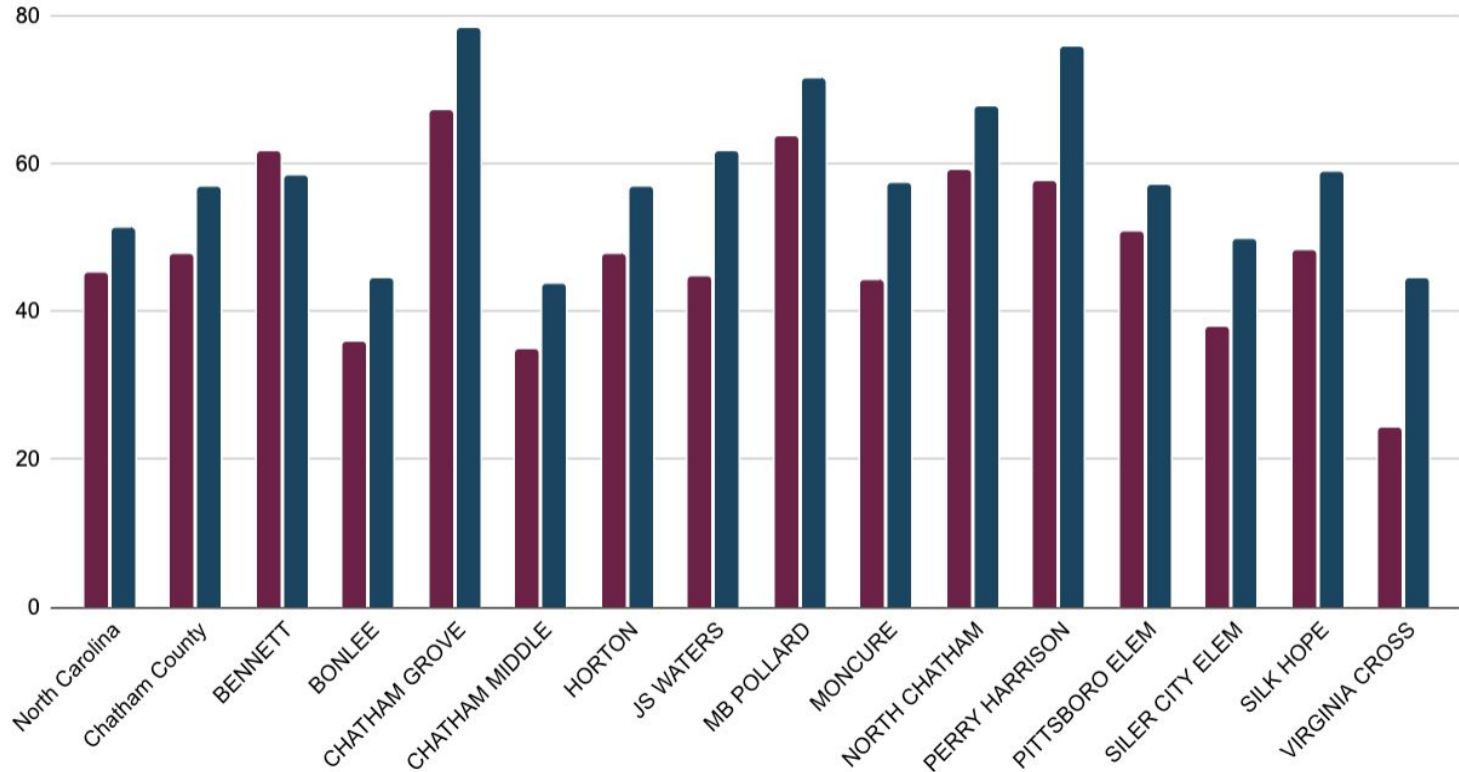


Performance Composite Growth by School



Performance Composite GLP Comparison: 2020-2021 vs. 2021-2022

■ 2020-2021 ■ 2021-2022

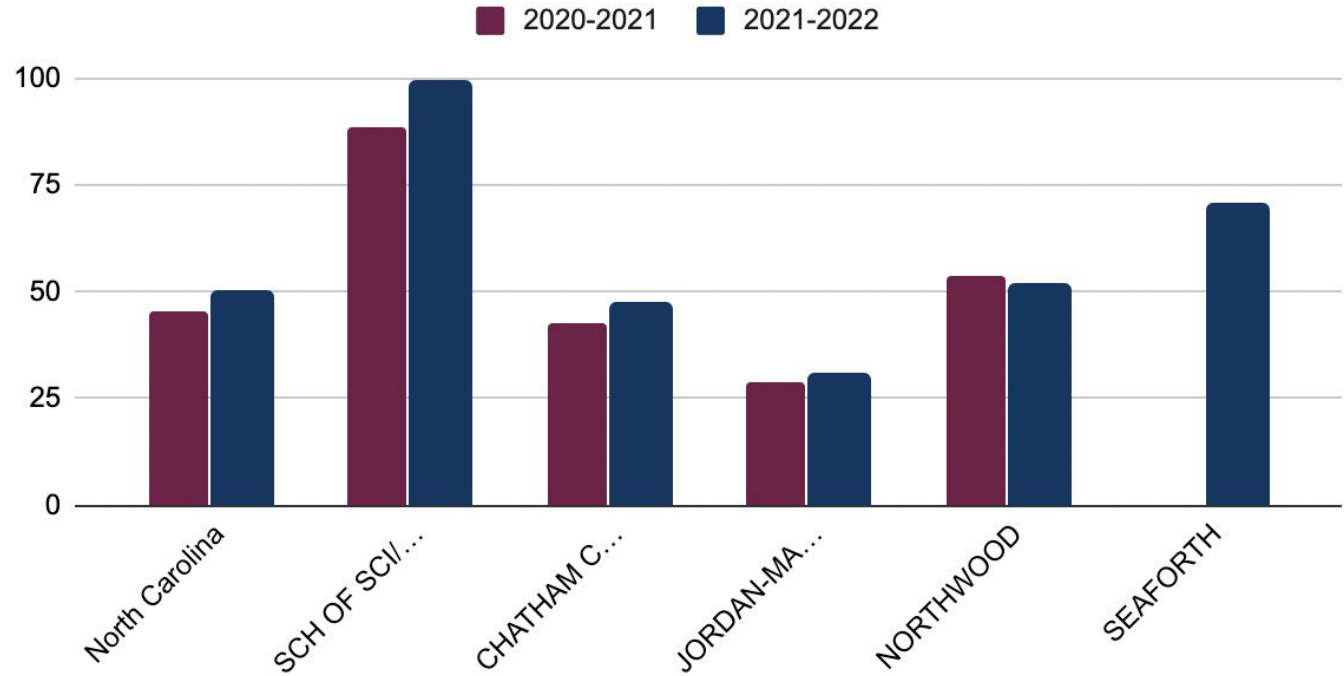


ELEMENTARY
& MIDDLE
GLP
COMPOSITE



HIGH SCHOOL GLP COMPOSITE

Performance Composite GLP Comparison 2020-2021 vs 2021-2022





READING PROFICIENCY

CHATHAM

COUNTY SCHOOLS

ELEMENTARY & MIDDLE SCHOOL READING PROFICIENCY

SCHOOL	3rd	4th	5th	6th	7th	8th
Bennett	61.8	77.8	59.3	64.3	45.2	75.8
Bonlee	55.6	40.4	16.0	54.5	47.2	39.5
Chatham Grove	72.4	86.6	71.8			
Chatham Middle				34.9	43.6	38.9
GM Horton			53.3	59.8	46.8	58.9
JS Waters	36.8	61.1	41.7	59.1	33.3	63.9
MB Pollard				69.2	72.0	66.5
Moncure	56.5	55	44.4	69.2	53.3	56.5
North Chatham	59.8	63.2	63.5			
Perry Harrison	77.8	83.3	60			
Pittsboro	48.4	69.3				
Siler City Elem.	27.8	55.2	39.6			
Silk Hope	48	67.9	20.7	57.6	65.6	68.9
Virginia Cross	22.4	40.8	27.4			
COUNTY	49.5	63.6	49.3	55.8	56.3	56.6
STATE	46.4	51.3	45.7	47.5	48.8	50.6



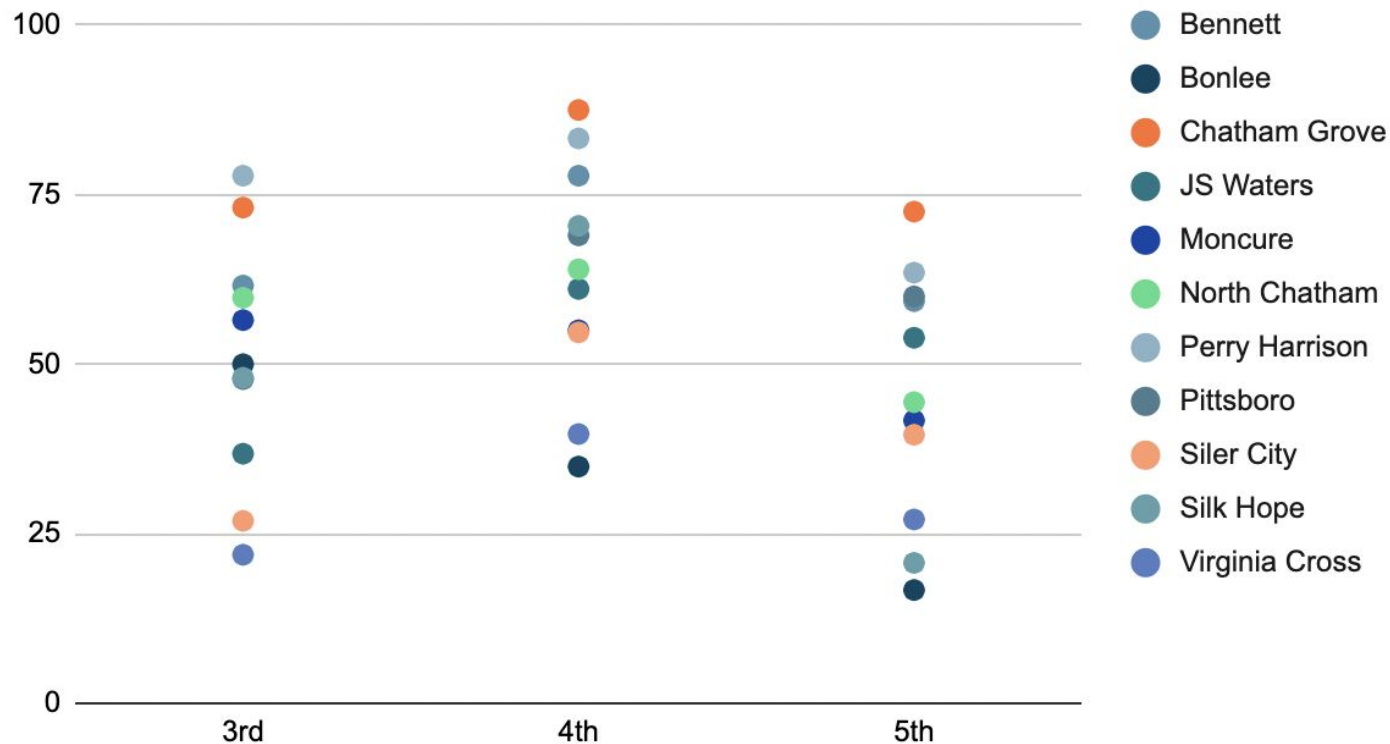
3RD GRADE READ TO ACHIEVE

	2019	2020	2021	2022
Grade 3 Enrollment	640		600	625
Number of students achieving proficiency on the BOG, EOG, or EOG retest	395 = 61.7%		309 = 51.5%	308 = 49.3%
Number of students passing SBE approved alternate assessments (ex. Read to Achieve Test)	71		56	104
Number of students obtaining proficiency after summer reading camps	22		48	18
Total number of students not obtaining grade 3 reading proficiency	83 = 13%		137 = 22.8%	130 = 20.8%
Total Number of student obtaining the grade 3 reading proficiency	557 = 87%		463 = 77.2%	495 = 79.2%



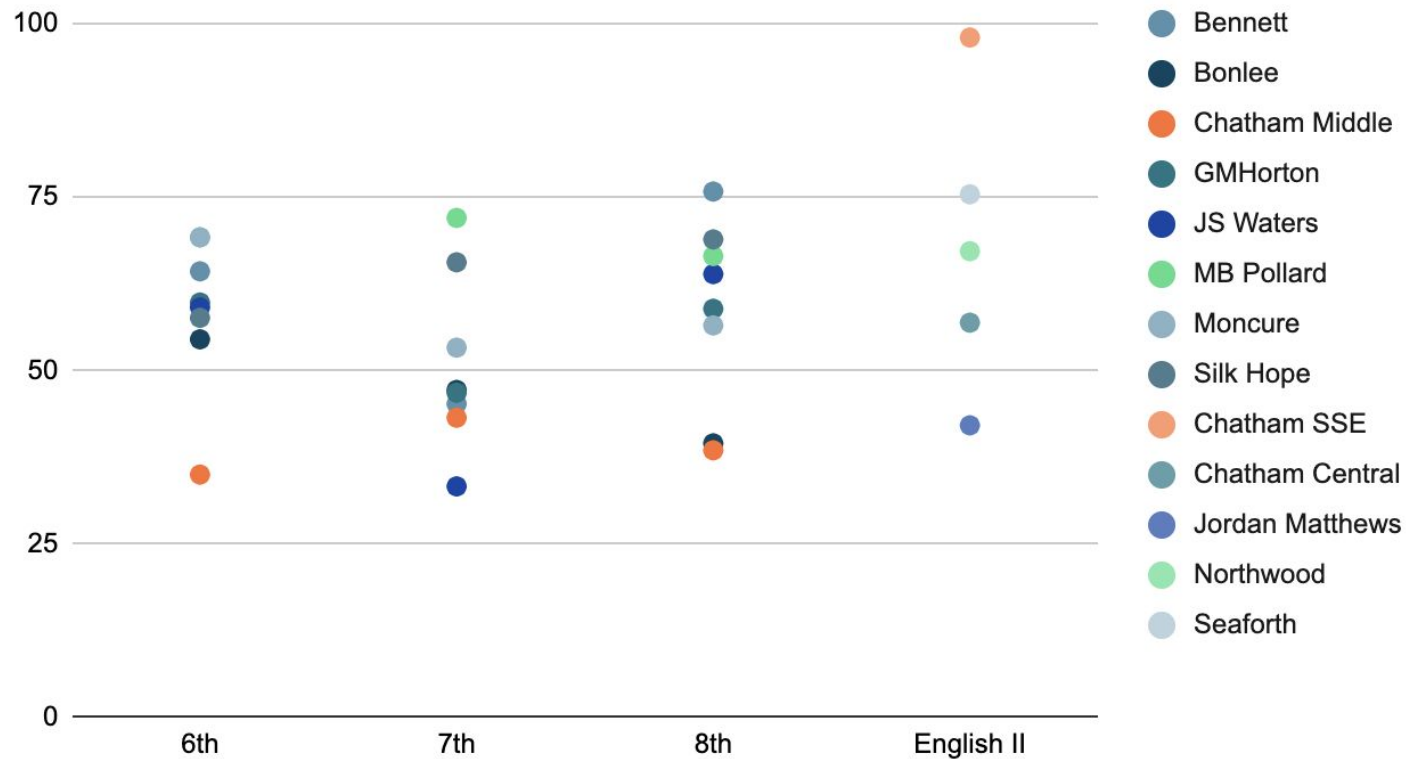
ELEMENTARY READING PROFICIENCY

3rd , 4th and 5th



SECONDARY READING PROFICIENCY

6th, 7th, 8th and English II





MATH PROFICIENCY

CHATHAM

COUNTY SCHOOLS

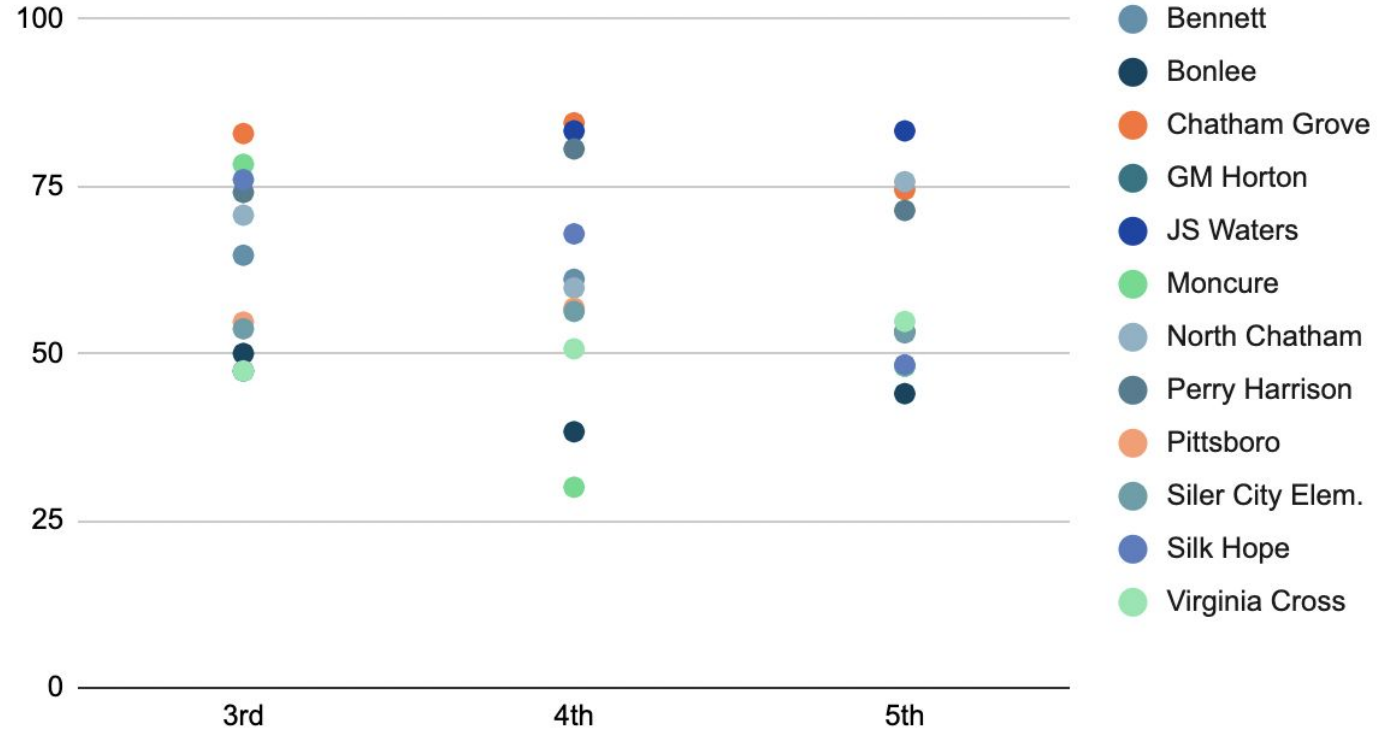
ELEMENTARY & MIDDLE SCHOOL MATH PROFICIENCY

SCHOOL	3rd	4th	5th	6th	7th	8th
Bennett	64.7	61.1	48.1	57.1	26.8	54.5
Bonlee	50	38.3	44	50	52.6	38.5
Chatham Grove	82.9	84.5	74.5			
Chatham Middle				39.7	46.8	41.1
GM Horton			53.3	61.2	55.2	46.3
JS Waters	47.4	83.3	83.3	77.3	50.0	41.7
MB Pollard				73.7	73.1	60.5
Moncure	78.3	30	48.1	69.2	53.3	45.5
North Chatham	70.7	59.8	75.7			
Perry Harrison	74.1	80.6	71.4			
Pittsboro	54.7	56.8				
Siler City Elem.	53.7	56.3	53.1			
Silk Hope	76	67.9	48.3	76.5	48.5	52.2
Virginia Cross	47.4	50.7	54.8			
COUNTY	63.5	61.4	61.1	60.3	57.6	50.3
STATE	57.1	49.8	51.1	50.3	48.7	42.2



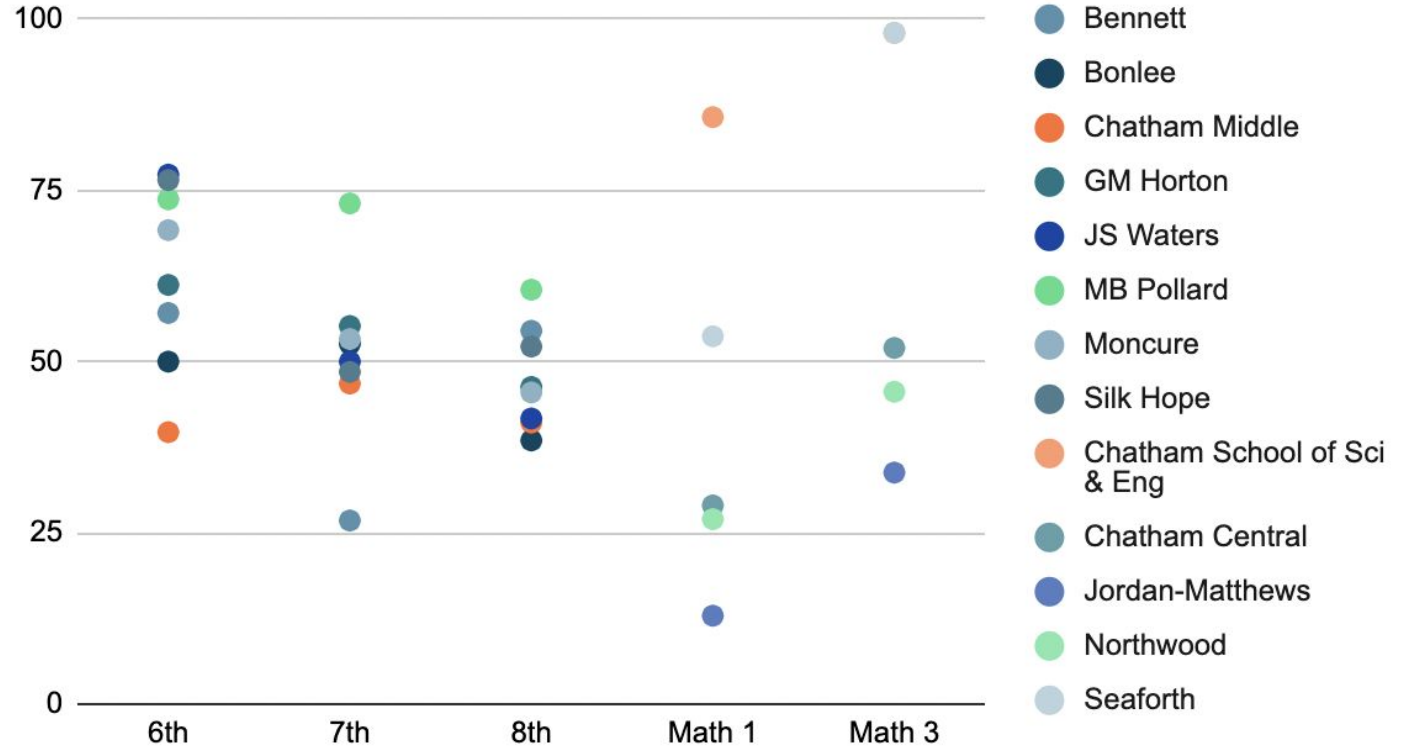
ELEMENTARY MATH PROFICIENCY

3rd, 4th and 5th



SECONDARY MATH PROFICIENCY

6th, 7th, 8th, Math 1 and Math 3





SCIENCE PROFICIENCY

CHATHAM

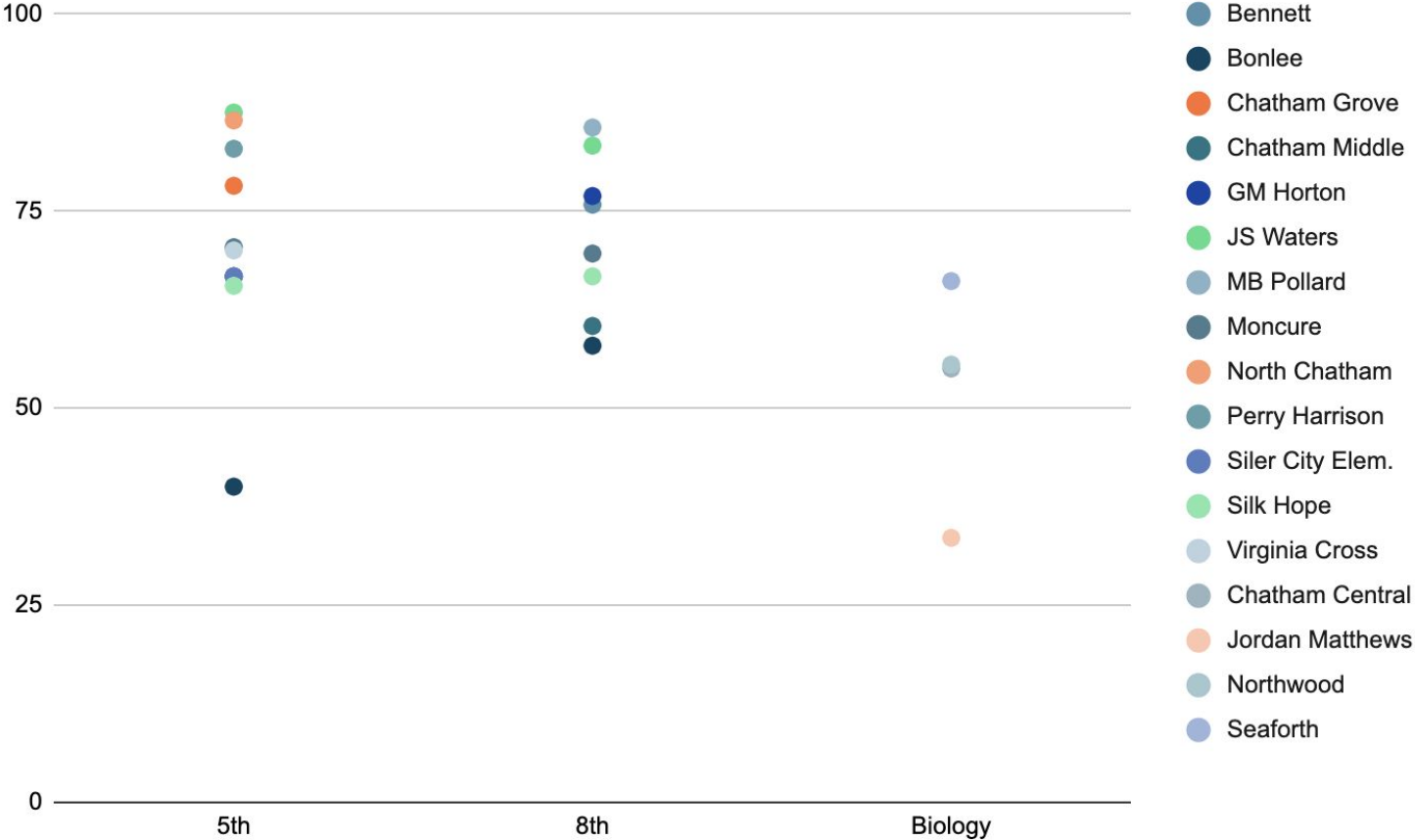
COUNTY SCHOOLS

ELEMENTARY & MIDDLE SCHOOL SCIENCE PROFICIENCY

SCHOOL	5th	8th
Bennett	66.7	75.8
Bonlee	40	57.9
Chatham Grove	78.2	
Chatham Middle		60.4
GM Horton	66.7	76.9
JS Waters	87.5	83.3
MB Pollard		85.6
Moncure	70.4	69.6
North Chatham	86.5	
Perry Harrison	82.9	
Pittsboro		
Siler City Elem.	66.7	
Silk Hope	65.5	66.7
Virginia Cross	70.0	
COUNTY	72.1	73.8
STATE	63	73.3



SCIENCE PROFICIENCY





HIGH SCHOOL INDICATORS

CHATHAM
COUNTY SCHOOLS

HIGH SCHOOL RESULTS

	NC Math 1 GLP	NC Math 3 GLP	Biology GLP	English II GLP	ACT	WorkKeys
CSSE	85.7	>95	>95	>95	80	
Chatham Central	29	52	55	56.9	38.5	72
Jordan-Matthews	12.9	33.8	33.5	42.1	40.4	54.2
Northwood	27	45.6	55.5	67.2	63.3	72.5
Seaforth	53.7	>95	66.1	75.4		
COUNTY	29.1	51.4	52.5	60.5	53.1	65.8
STATE	33.1	53.4	52.1	57.9	41.7	61.1



4-YEAR GRADUATION RATE

	2019	2020	2021	2022
CSSE			>95.0	>95
Chatham Central	94.2	85.6	87.7	80.6
Jordan-Matthews	85.9	82.4	84.8	83.2
Northwood	90.8	91.3	89.6	88.4
SAGE	75.5	67.1	N/A	N/A
Seaforth				
COUNTY	88.5	87.3	87.8	86
STATE	86.5	87.6	86.9	86.2



5-YEAR GRADUATION RATE

	2019	2020	2021	2022
CSSE			N/A	>95
Chatham Central	93.3	94.2	85.6	89.2
Jordan-Matthews	84.3	86.9	84.1	87.9
Northwood	90.9	91.7	92.3	91.2
SAGE	71.0	62.5	N/A	N/A
Seaforth				
COUNTY	88.8	89.2	88.7	89.9
STATE	87.9	88.0	88.6	88.5





NEXT STEPS

CHATHAM

COUNTY SCHOOLS



OPPORTUNITIES

- Monitor progress
- Examine longterm goals in need of focused work
- Continued partnerships
- Examine fidelity of programming and interventions



STRATEGIES

- Enhance use of Check-In data
- Strengthen Drop Out Prevention efforts
- ASIS instructional visits
- Support and provide feedback to School Improvement teams
- Focused School Support Plans

AREAS TO TARGET

- HS Math1
- ELL Progress
- Overall Longterm Goals
- Grade 3 & 5 Reading
- Grade 8 Math
- Graduation Rates



ACTION STEPS

- Implementation of LETRS
- Provide PD on culturally relevant teaching practices
- Assess Fidelity to Principal Instructional Leadership Priorities





“Our students and staff really worked hard last year to provide students the opportunity to rebound academically from the impacts of the pandemic during the prior two school years. These data are a testament to the work of our students and staff and the partnership with their parents.”

–Superintendent Dr. Anthony Jackson.

“History will judge us by the difference we make in the everyday lives of children.”

— Nelson Mandela



