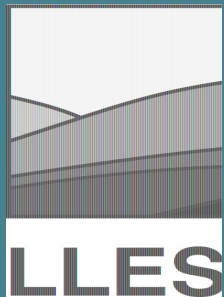


LLESD

Technology Plan Update

Jeff Honda, Mei Chan, and Shannon Potts



February 8, 2023

LLESD Strategic Plan and LCAP

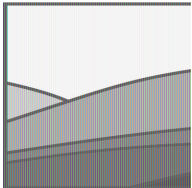
Strategic Plan:

#1 Engaging & Inclusive Educational Program

#5 Operations: Facilities, IT, HR & Infrastructure

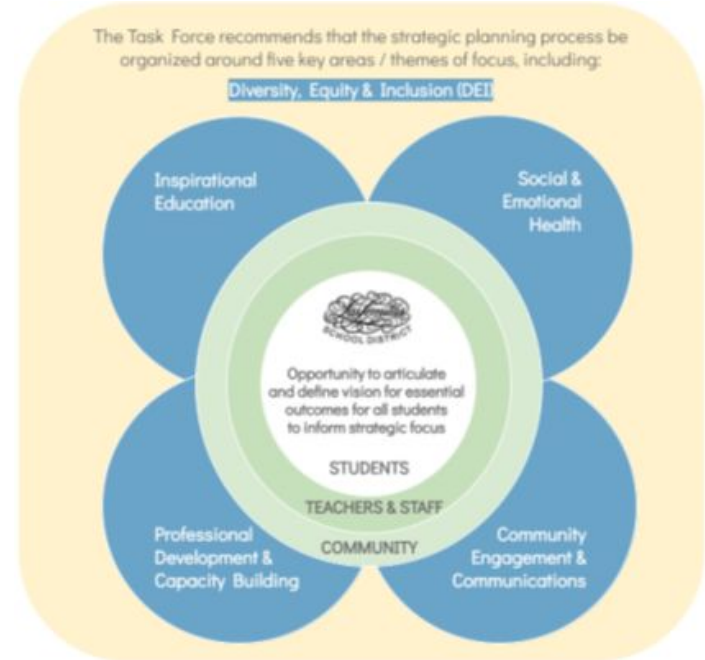
LCAP:

#2 “All students will receive core instruction in redesigned and well-maintained facilities...”



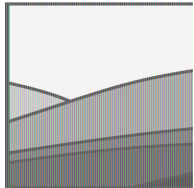
LLES

#5 Strengthen stakeholder engagement and strategic communications



History - Technology Plan

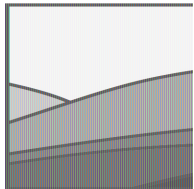
- 2017-2022 District Technology Plan
 - Aligned to the previous strategic plan, LCAP and International Society for Technology in Education (ISTE) Standards for Teachers and Students
 - Writing committee 2015-17 consisted of District and site administration, certificated and classified Staff, and parents
 - Site visits to model technology schools
 - Plan includes:
 - Teaching, Learning, and Assessment
 - Professional Learning
 - Infrastructure and Digital Tools
 - Data and Privacy



Equipment Replacement Plan

	2016-17	2017-18	2018-19	2019-20	2020-21	2021-2022	2022-23
LL Teachers/ Staff	Explore/ Purchase	Year 1	Year 2	Year 3	Year 4	Year 5 Explore/ Purchase	Year 1
LE Teachers/ Staff		Explore/ Purchase	Year 1	Year 2	Year 3	Year 4	Year 5 Explore/ Purchase
LL Lab			Explore/ Purchase	Year 1	Year 2	Year 3	Year 4
LE Mac Lab		Explore/ Purchase	Year 1	Year 2	Year 3	Year 4	Year 5 Explore/ Purchase
LE Labs			Explore/ Purchase	Year 1	Year 2	Year 3	Year 4
District Office	Explore/ Purchase	Year 1	Year 2	Year 3	Year 4	Year 5 Explore/ Purchase	Year 1
Student Computers	Explore/ Purchase	Year 1	Year 2	Year 3	Explore/ Purchase	Year 1	Year 2
Chrome Books				Explore/ Purchase	Year 1	Year 2	Year 3
Network Equipment	Yearly	Yearly	Yearly	Yearly	Yearly	Yearly	Yearly
Telecom. Equipment				Explore/ Purchase			
Budget	\$250,000	\$150,000	\$150,000	\$150,000	\$150,000	\$150,000	\$150,000

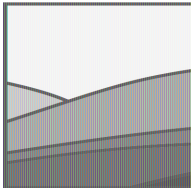
2017-2022 District Technology Plan



LLES

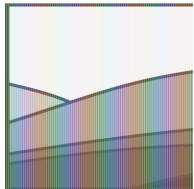
Funding Sources

- General Fund
- One-Time COVID Funds
- Foundation - Fund-a-Need
- Bond
- E-Rate - Federal discount program to assist schools with affordable telecommunication and internet projects
- Restricted local grants



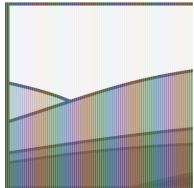
Devices - Technology Plan

- Chromebooks (2-8)
 - 958 In Use
 - 170 Old Chromebooks still in use
 - 40 Broken, waiting for parts
- 406 iPads (TK-1)
- Interactive Displays
 - 52 SmartBoards
 - 63 Prometheans
- 129 Laptops



Interim Extension - Technology Plan

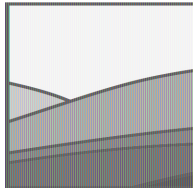
- 2020-21 - Pandemic Lockdown
 - Virtual Classroom (distance learning).
 - Distributed Chromebooks, iPads, Hotspots.
- 2021-22
 - Refreshed Chromebooks and iPads.
 - Refreshed Laptops.
- 2022-23 - Bond Funded Modernization
 - Refresh Network Switches and WiFi.
 - Replaced Phone System.



Infrastructure and Digital Tools

“The robust infrastructure needed to support the vision of one-to-one computing requires substantial institutional investment. Leaders are responsible for meeting the challenges and ensuring ubiquitous access among administrators, teachers, and students to connectivity and devices. In addition to the initial cost of purchasing hundreds or thousands of electronic devices, there are very substantial ongoing costs, including implementation, training, software licensing, monitoring, security, upgrades and maintenance. The intent is to assure equity for all students by closing the digital use divide as described in the introduction of the Teaching, Learning, and Assessment section.”

-LLESD Technology Plan page 23-26

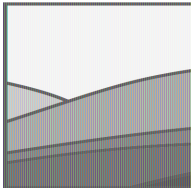


LLES

Data and Privacy

“Data collection is integral to state and federal accountability systems as well as local evaluations. Accurate data is crucial to any evaluation system because if the data has errors, the decisions will be error prone as well... Data integrity and transparency are imperative to any evaluation system. Carefully administered procedures must be in place to ensure data integrity. Data integrity requires verification and cleaning of data and establishing clear procedures for data collection.”

-LLESD Technology Plan page 23-26



LLES

2017-2022 District Technology Plan-Extension 2022-25

Actual and Projected Equipment Replacement Plan

	2016-17	2017-18	2018-19	2019-20	2020-21	2021-22	2022-23	2023-24	2024-25	2025-26
LL Teachers/ Staff	\$94K					\$142K				\$130K
LE Teachers/ Staff										
LL Lab				Replaced w/ LE MAC Lab machines					Replace w/ LE MAC Lab machines	
LE Mac Lab			\$49K					\$80K		
District Office	\$21K					\$28K				\$30K
Chrome Books			\$45K	\$193K	\$112K	\$70K	\$51K		\$280K	
iPads			\$19K		\$23K	\$33K	\$20K	\$50K	??	??
Projection Equipment										
B&W Printer							\$25K			
Shared Color Printers								\$2K	\$2K	\$2K
Network Equipment		\$57K	\$55K		\$110K		\$124K	\$82K		
Telecom. Equipment										
Expenditures	\$115K	\$114K	\$168K	\$193K	\$245K	\$245K	\$220K	\$214K	\$282K	\$162K
Budget	\$250K	\$150K	\$150K	\$150K	\$150K	\$150K	\$150K	\$250K	\$175K	\$175K
Bond						\$160K Network				
						\$154K Telecom				

Questions

