



## ► 2020 CENSUS AND REDISTRICTING

SAN DIEGO COUNTY BOARD OF  
EDUCATION

**AUGUST 11, 2021**



► CENSUS DATA AND REDISTRICTING  
**EDUCATION CODE SECTION 1002**

- County boards of education are required after every Census to:
  1. Review the population data to determine if their voting areas are still within the allowable variance
  2. Make any necessary adjustments to the areas to ensure population balance within legal requirements
- Typically, the data required is released by March 31 of the year following the Census
- Changes to voting areas need to be filed with the Registrar of Voters and the County Board of Supervisors by **January 31, 2022**



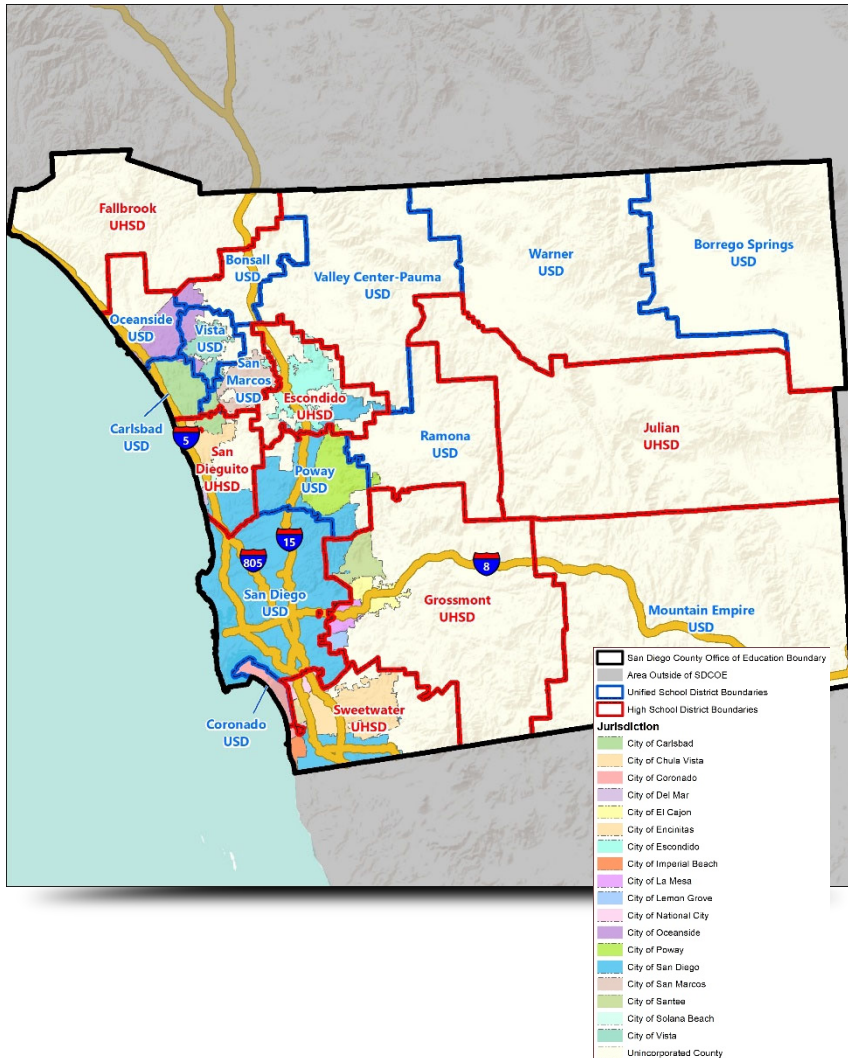
► **CENSUS DATA AND REDISTRICTING**  
**TIMING OF DATA**

- Release of 2020 Census data has been delayed due to the COVID-19 pandemic
- Latest update from Census Bureau indicates 2020 Census data at block level will be released between August 16 and September 30, 2021
- Compresses timeframe for SDCOE and other public agencies who elect by-area to review and adjust their voting areas
- Potential for legislative changes, including changes to primary election date
- No formal process in statute governing the process to adjust trustee areas following each Census



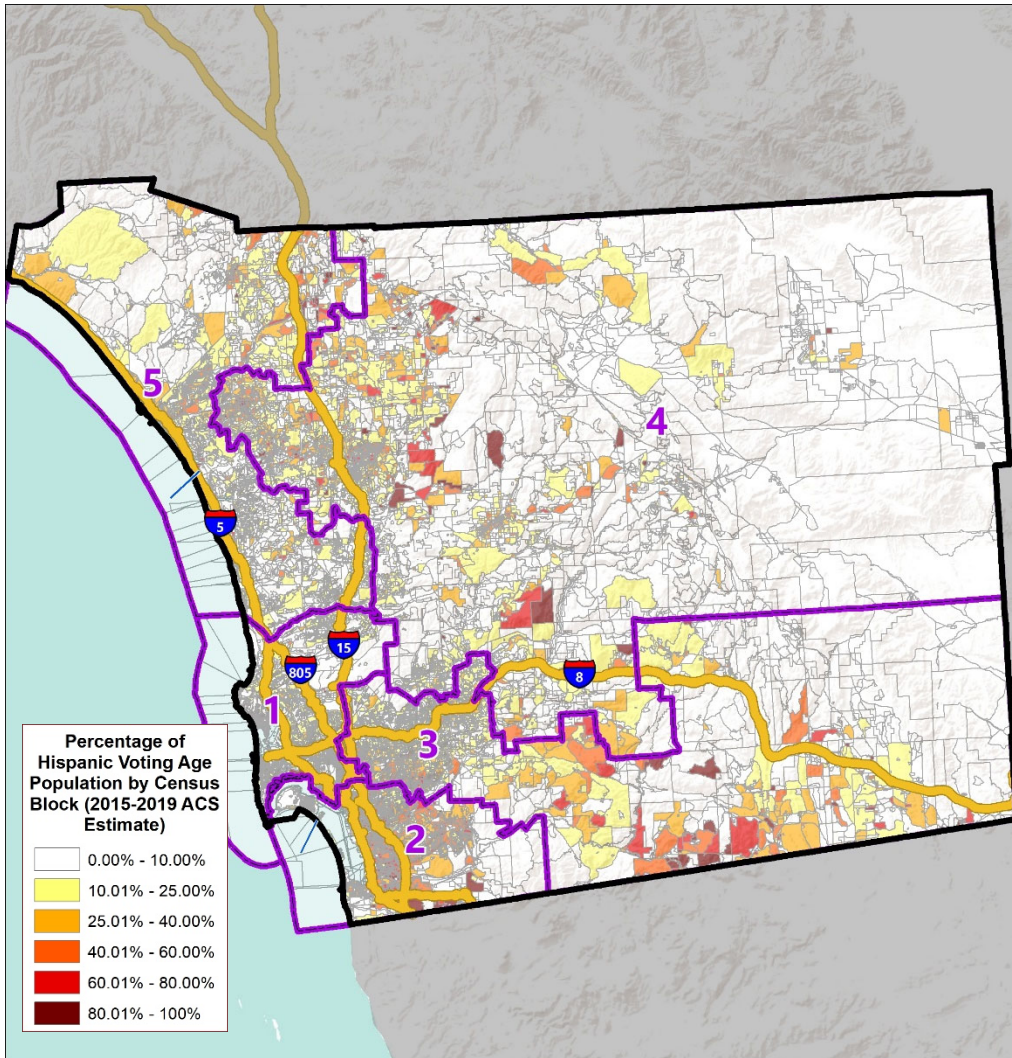
## ► DISTRICT DEMOGRAPHICS

### 2010 CENSUS DATA



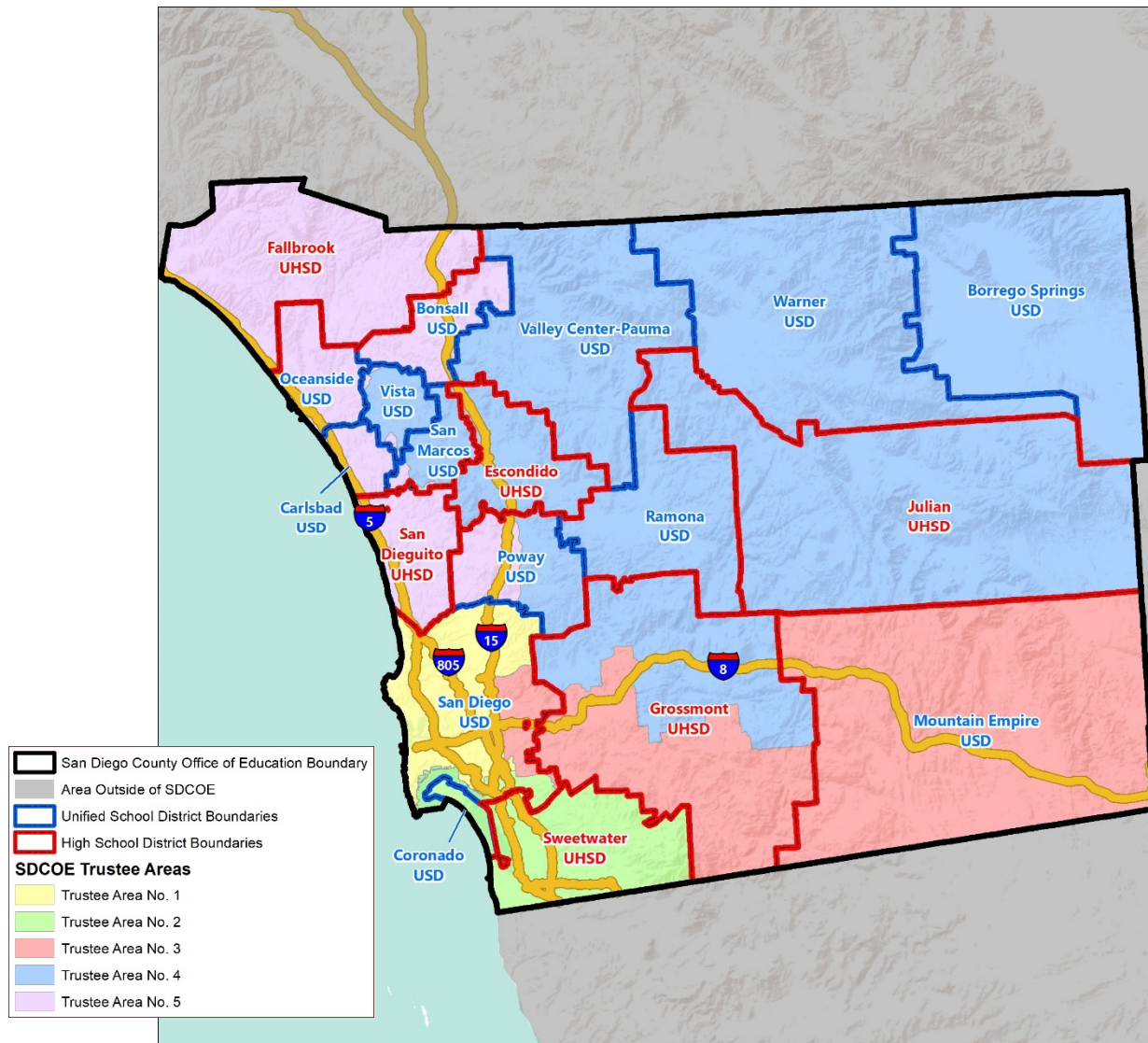
Population	Total Population		Age 18 and over	
	Total	%	Total	%
Hispanic/Latino	991,259	32.03%	661,311	27.89%
White	1,499,665	48.46%	1,254,068	52.90%
Black / African American	146,599	4.74%	111,504	4.70%
American Indian / Alaska Native	14,085	0.46%	10,886	0.46%
Asian	328,053	10.60%	264,033	11.14%
Native Hawaiian/ Pacific Islander	13,503	0.44%	10,624	0.45%
Other	94,939	3.07%	53,617	2.26%
Two or More Races	6,715	0.22%	4,699	0.20%
<b>Total</b>	<b>3,094,818</b>	<b>100.00%</b>	<b>2,370,742</b>	<b>100.00%</b>

► DISTRICT DEMOGRAPHICS  
CITIZEN VOTING AGE POPULATION ESTIMATES



Population	2015-2019 CVAP	
	Total	%
Hispanic/Latino	588,349	25.97%
White	1,229,463	54.27%
Black / African American	119,326	5.27%
American Indian / Alaska Native	10,103	0.45%
Asian	244,717	10.80%
Native Hawaiian/ Pacific Islander	10,283	0.45%
Two or More Races	63,078	2.78%
<b>Total</b>	<b>2,265,319</b>	<b>100.00%</b>

## ► CURRENT TRUSTEE AREAS



► **CURRENT TRUSTEE AREAS**  
**DEMOGRAPHICS**

TRUSTEE AREA	Trustee Area 1		Trustee Area 2		Trustee Area 3		Trustee Area 4		Trustee Area 5	
TP* vs. CVAP**	TP	CVAP	TP	CVAP	TP	CVAP	TP	CVAP	TP	CVAP
Population	622,505	496,654	619,694	408,738	612,171	448,654	622,992	447,518	617,456	463,755
Population Variance	3,541	43,590	730	-44,326	-6,793	-4,410	4,028	-5,546	-1,508	10,691
	0.57%	9.62%	0.12%	-9.78%	-1.10%	-0.97%	0.65%	-1.22%	-0.24%	2.36%
Hispanic/Latino	122,104	84,529	356,445	208,298	184,129	108,480	207,442	111,506	121,139	75,536
	19.61%	17.02%	57.52%	50.96%	30.08%	24.18%	33.30%	24.92%	19.62%	16.29%
White	352,716	303,286	114,244	92,551	303,048	246,806	346,458	279,291	383,199	307,529
	56.66%	61.07%	18.44%	22.64%	49.50%	55.01%	55.61%	62.41%	62.06%	66.31%
Black/African American	26,309	22,763	42,370	33,023	50,942	39,619	12,074	10,840	14,904	13,081
	4.23%	4.58%	6.84%	8.08%	8.32%	8.83%	1.94%	2.42%	2.41%	2.82%
American Indian/ Alaska Native	1,965	1,639	1,564	848	2,658	1,620	5,469	3,669	2,429	2,327
	0.32%	0.33%	0.25%	0.21%	0.43%	0.36%	0.88%	0.82%	0.39%	0.50%
Asian	93,820	66,529	85,539	62,888	44,907	36,175	32,702	27,859	71,085	51,266
	15.07%	13.40%	13.80%	15.39%	7.34%	8.06%	5.25%	6.23%	11.51%	11.05%
Native Hawaiian/Other Pacific Islander	2,149	2,070	3,387	2,712	3,009	2,129	2,216	1,787	2,742	1,585
	0.35%	0.42%	0.55%	0.66%	0.49%	0.47%	0.36%	0.40%	0.44%	0.34%
Other	1,964	0	1,011	0	1,323	0	1,002	0	1,415	0
	0.32%	0.00%	0.16%	0.00%	0.22%	0.00%	0.16%	0.00%	0.23%	0.00%
Two or More Races	21,478	15,838	15,134	8,418	22,155	13,825	15,629	12,566	20,543	12,431
	3.45%	3.19%	2.44%	2.06%	3.62%	3.08%	2.51%	2.81%	3.33%	2.68%

## ► CONSIDERATIONS IN VOTING AREAS



Each area shall contain nearly equal number of inhabitants



Follow man-made and natural geographic features, as much as possible



Drawn to comply with the Federal Voting Rights Act



Respect incumbency, if possible



Compact and contiguous, as much as possible



Other local considerations



Respect communities of interest, as much as possible

## ► POTENTIAL PROCESS

DATE	ACTIVITY
<b>August 11, 2021</b>	<b>County Committee Meeting: Presentation on Process</b>
Mid August 2021	Cooperative Strategies receives 2020 Census data and evaluates population within each voting area of the Board of Education
<b>September 8, 2021</b>	<b>County Committee Meeting: Presentation on Evaluation of Existing Voting Areas Receive Input on Potential Adjustments</b>
September 9 to October 1, 2021	Cooperative Strategies prepares potential maps of adjusted Voting Areas
October 1, 2021	Draft Maps Made Publicly Available
<b>October 13, 2021</b>	<b>County Committee Meeting: Review Initial Scenarios and Conduct Public Hearing</b>
October 14 to November 1, 2021	Cooperative Strategies revises scenarios based on Board and Public Input
<b>November 10, 2021</b>	<b>County Committee Meeting: Review Maps and Conduct Public Hearing</b>
November 11 to November 24, 2021	Cooperative Strategies revises scenarios based on Board and Public Input, if necessary
<b>December 8, 2021</b>	<b>County Committee Meeting: Review Maps and Conduct Public Hearing County Committee Selection of Map</b>
December 9, 2021	Cooperative Strategies sends Final Trustee Area Map and Descriptions to the County Registrar of Voters and County Boards of Supervisors
January 2022	County Board of Supervisors considers approval of selected map



# QUESTIONS

