



# Updates to the SRCS Cal-OSHA COVID-19 Protection Program (CPP) & Safety Handbook

March 30, 2022

On-Going Revisions to a Changing COVID-19 Landscape

SANTA ROSA CITY SCHOOLS  
STUDENT & FAMILY HANDBOOK (updates in **RED**)  
2021-22 COVID-19 SAFETY (updated 3-30-22)





## Topics for Review

- Rescinded masking requirements for staff and students
- Revised standards for vaccination mandates
- Reduced schedule for mandated testing
- Vaccination requirements for non-paid volunteers
- Voluntary Student and Staff “pool testing” updates
- Updated guidelines for extracurricular activities and events

The information in the following slides provides additional information to guide discussion.

# Sonoma County Case Information: 3-24-22

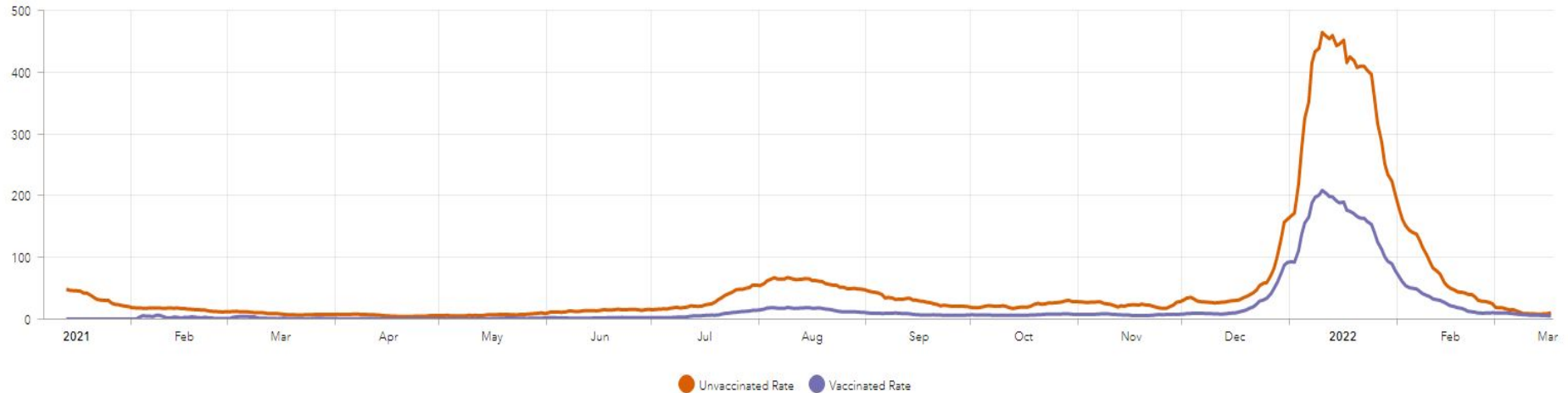
## Sonoma County Cases

<b>Active</b> 920 0.18% of Population	<b>Deaths</b> 487 0.6% of Cases	<b>Recovered</b> 82017 98% of Cases	<b>Total</b> 83424 16.39% of Population
---	---------------------------------------	---	---

## Sonoma County Last 24 Hrs

<b>Active</b> ↓121	<b>Deaths</b> ↑3	<b>Recovered</b> ↑146	<b>Total</b> ↑28
-----------------------	---------------------	--------------------------	---------------------

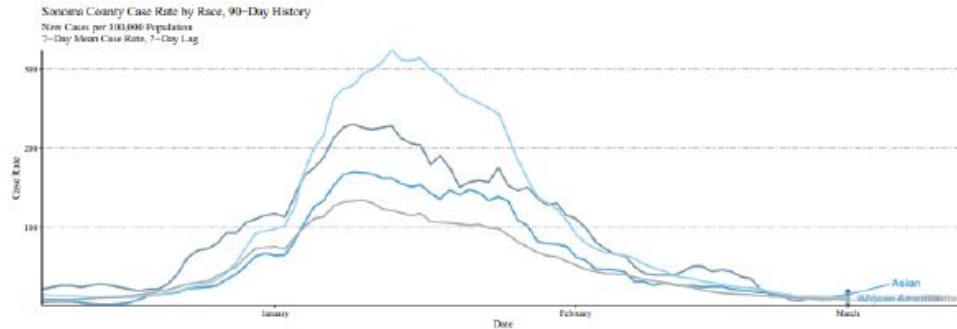
New Cases per Day per 100,000 Residents, by Vaccination Status (7 day average, 7 day lag)



# Sonoma County Case Information:

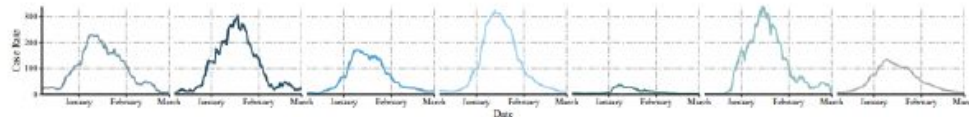
## Case Rates by Race/Ethnicity

- American Indian/Alaskan Native residents are currently experiencing the highest case rates at 19 new cases per 100,000 residents per day, followed by Asian residents at 15 new cases per 100,000 per day



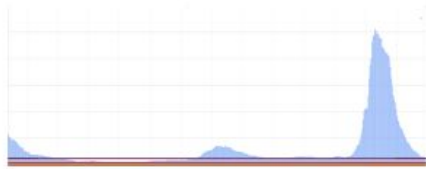
Current Case Rate:

African American	American Indian/ Alaskan Native	Asian	Hispanic/Latino	Multiple Race	Pacific Islander	White
8.86	18.96	15.4	9.21	1.62	7.66	8.34

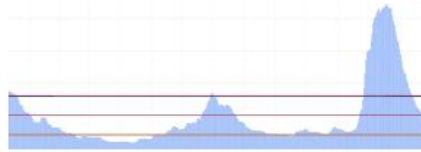


# Sonoma County Case Information:

## Overall Countywide Trends



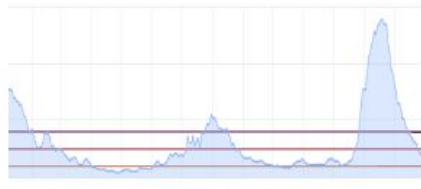
New cases per 100,000 residents per day



Overall test positivity



COVID-19 hospitalizations

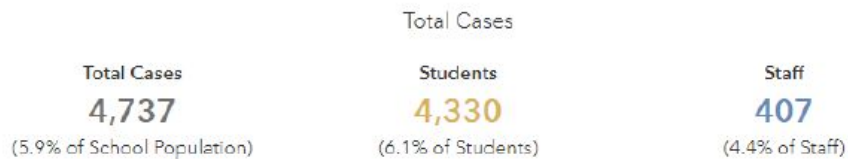


Lowest HPI test positivity

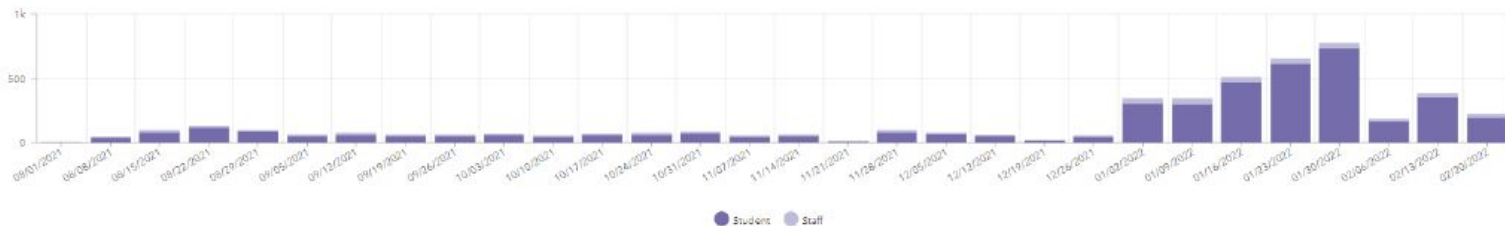
- **Metrics as of 03/09/22:**
  - 10.6 new cases per 100,000 residents per day
  - 3.3% overall test positivity
  - 3% test positivity in lowest HPI quartile
- COVID-19 hospitalizations declining (**28** currently hospitalized)
- **54** people have died from COVID-19 since January 01, 2022

# Sonoma County Case Information:

## TK-12 Cases (2021-2022)



Trends in Numbers of Student and Staff COVID-19 Cases by Week



# Sonoma County Case Information: TK-12 student cases by Race/Ethnicity, ages 5-17

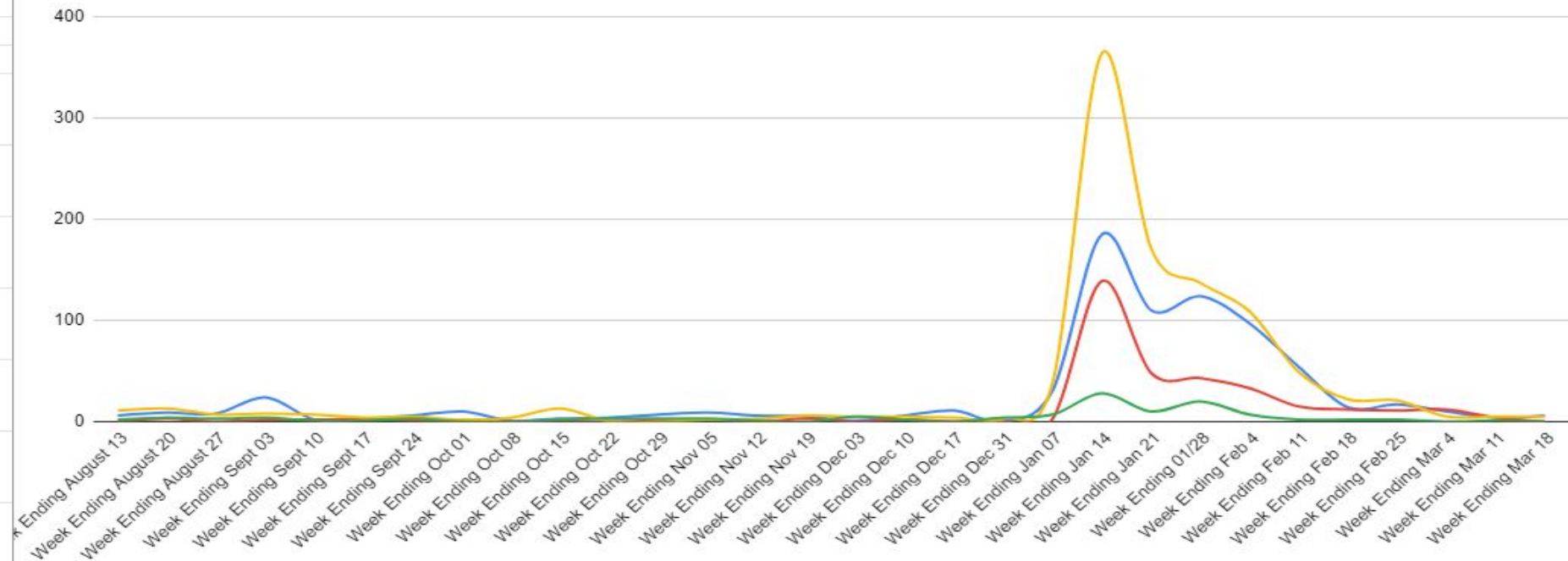
Race Ethnicity	Percent of Cases	Percent of Population Age...
American Indian/Alaska Native	1.5%	0.5%
Asian	3.7%	3.8%
Black/African American	1.7%	1.7%
Hispanic/Latino	38.3%	43.8%
Multi-racial	3.6%	6.5%
Native Hawaiian and other Pacific Isl...	0.3%	0.3%
White	50.9%	43.4%

Additional information from the Sonoma County Department of Health Services: [HERE](#)

# SRCS COVID-19 Dashboard Cases (updated 3-18-22)

SRCS Confirmed Positive C-19 Cases Aug. 12 - March 18

Elementary Middle High School Staff





# SRCS COVID-19 Dashboard Cases (updated 3-18-22)

Locations	Total Since August 12	Week Ending 03/18	Week Ending 03/11	Week Ending 03/04	Week Ending 2/25	Week Ending 2/18	Week Ending 2/11	Week Ending 2/4	Week Ending 01/28	Week Ending 01/21	Week Ending 01/14	Week Ending 01/07 *
Elementary*	773	6	4	10	17	14	54	97	124	110	185	31
Middle	340	0	4	12	11	12	15	33	43	48	139	3
High School	1028	5	5	5	21	22	49	109	137	171	364	39
Totals	2140	11	12	27	49	48	118	239	304	329	688	73
Staff	120	0	1	0	2	2	2	7	20	10	28	7
*K-8 schools reported as Elementary												

\*Week Ending 01/07 marks antigen test distribution to students and staff.



## Current Masking Guidance / Requirements

<https://www.cdph.ca.gov/Programs/CID/DCDC/Pages/COVID-19/guidance-for-face-coverings.aspx>

Effective 3-1-2022, the California Department of Public Health transitioned mask requirements for K-12 settings to “strongly recommended” for all staff and students regardless of vaccination status.

SRCS extended the mask requirements to remain in effect until 3-28-2022, at which point the transition to universal masking as “strongly recommended” aligns with the Sonoma County and CDPH health orders.

## Current Vaccination Requirements

<https://socoemergency.org/amendment-no-3-to-order-of-the-health-officer-of-the-county-of-sonoma-c19-32/>

Effective 3-7-2022, the Sonoma County Department of Health Services has returned to **once-weekly** mandated testing for unvaccinated\* employees instead of twice-weekly.

Additionally, Booster status has been removed as a qualifying exemption from mandated testing. Boosters remain strongly recommended for all eligible individuals, but no longer required to be considered “fully vaccinated”.

\*“Unvaccinated” includes partially vaccinated or declined to state.

## Masks / Vaccination / Testing Matrix

Effective 3-28-2022 per SRCS

	<b>Students</b>	<b>Staff</b>	<b>Volunteers</b>
<b>Masks</b>	<i>Strongly Recommended</i>	<i>Strongly Recommended</i>	<i>Strongly Recommended</i>
<b>Fully Vaccinated</b>	<i>Recommended (if eligible)</i>	<i>Required</i>	<i>Currently Required</i>  <i>(Propose Recommended)</i>
<b>Booster</b>	<i>Recommended (if eligible)</i>	<i>Recommended (if eligible)</i>	<i>Currently Required (if eligible)</i>  <i>(Propose Recommended)</i>
<b>Testing</b>	<i>Recommended (if eligible)</i>	<i>Required (if unvaccinated*)</i>	<i>If unvaccinated, Test 1x per week</i>

\*“Unvaccinated” includes partially vaccinated or declined to state



# Voluntary “Pool” Testing Updates

- Currently, a combined total of 5,661 students and staff are signed up for Weekly Pool testing
  - The week before Spring Break, 3/14-3/18, we administered 5,479 tests
    - During this week, 10 were found positive
  - Based on continually decreasing Community Case Rates, effective March 28th, weekly pool testing has been reduced to twice-monthly.
- 
- Voluntary Asymptomatic PCR Testing remains at Lewis Early Learning Academy  
Mon - Thursday 2:30pm - 5:00pm
  - Rapid Sonoma County Symptomatic / Asymptomatic Testing open to Public  
Monday & Friday 8:30am - 3:30pm

# Extracurricular Activities

## Field Trips

- Day Instructional / Athletics: Masks strongly recommended at all times.
- Overnight Field Trips: Currently Volunteer chaperones **MUST** be fully vaccinated AND boosted, if eligible.  
**Proposal to transition to recommend fully vaccinated AND boosted, if eligible, or provide proof of negative test 24 hours prior to trip.**

## Proms / Dances / Graduations / Social Events:

- Masks strongly recommended at all times.
- **Indoor** capacity limited to under 1,000 attendees
- **Outdoor** capacity limited to under 10,000 attendees
- Food, if provided, is to be served outdoors if possible, and in a manner that safely maintains social distancing.
- Additional restrictions are to be observed according to the guidelines of the hosting venue.
- “Best Practices” as outlined by the Sonoma County Department of Health Services are strongly recommended for extracurricular events to include; attendee registration, pre-screening, other environmental considerations specific to venue (airflow, social distancing, etc), and miscellaneous considerations such as a limited event duration to mitigate potential exposure.



# Upcoming Free Sonoma County COVID-19 Clinics

Open to the Public - Ages 5+

Saturday, April 2, 12:00 - 4:00pm  
Santa Rosa High School, 1235 Mendocino Ave.

Saturday, April 23, 12:00 - 4:00pm  
Elsie Allen High School, 599 Bellevue Ave.

For more information visit:

<https://socoemergency.org/emergency/novel-coronavirus/vaccine-information/clinics/>



Thank You

Questions?