



West County Transportation Agency Update

September 14, 2022

Santa Rosa City Schools

Routes and Staffing

- SPED Ambulatory: 46 routes (12 uncovered, 6 full and 6 am only)
- SPED Wheelchair: 13 (2 uncovered)
- SPED Van: 18
- Gen Ed: 33 (5 uncovered, 2 full and 3 am only)

Total Routes: 110 (9 am only routes)

Total Uncovered: 19

Along with our 19 uncovered routes we have an additional 7 Standby Driver (substitute) positions available.

COVID Pandemic influenced many to retire earlier than anticipated and others to leave the student transportation field of work all together.

Recruitment

We continue to pursue recruitment of bus drivers through all of the normal activities, but have remained flat on positive gains due to retirements and natural attrition of employees.

- Increased monetary hiring incentives
- Developed creative “paid” training options
- Year-round training classes
- Offer 10, 11, and 12 month positions

Actions to Mitigate Driver Shortages

- Uncovered routes will be driven by our standby drivers, subs, and licensed staff members from our Operation Offices
 - Delayed response from Operations Staff
- Routes have been consolidated to reduce uncovered routes
 - Longer ride times
- Reduced time window of availability for field/activity trips
 - Decreases options to schools needing field/activity trips during normal route times
- Contract services for Transition Students
- Transport capable students in 10 passenger vans
- Continued recommendation of bell time changes within the JPA membership
 - Reduce Routes & Offset Driver Shortages
 - Cost Savings
 - Retention
 - Improve Service

Special needs routes change frequently at the start of the year and will likely result in more efficiencies and help reduce ride times for most students as changes occur.

Requests for Assistance and/or Membership Due To Lack of Drivers

- Alexander Valley USD
- St. Helena & Calistoga USD
- Cloverdale USD
- Monte Rio Union
- Napa County Office of Education
- Rincon Valley USD
- Sonoma Academy

Ridership

- Special Needs
 - 885 School Year 2020-21 and 86 Routes (Pre-Pandemic)
 - 495 SRCS
 - 727 School Year 2021-22 and 75 Routes (Post Pandemic)
 - 424 SRCS
 - 764 – School Year 2022-23 and 77 Routes
 - 454 SRCS
- General Education
 - Ridership dipped post pandemic, but has risen to nearly the same as pre-pandemic
 - Ridership is less impactful on Gen Ed routes as they travel along a path of pre-designated stops

Routing Challenges

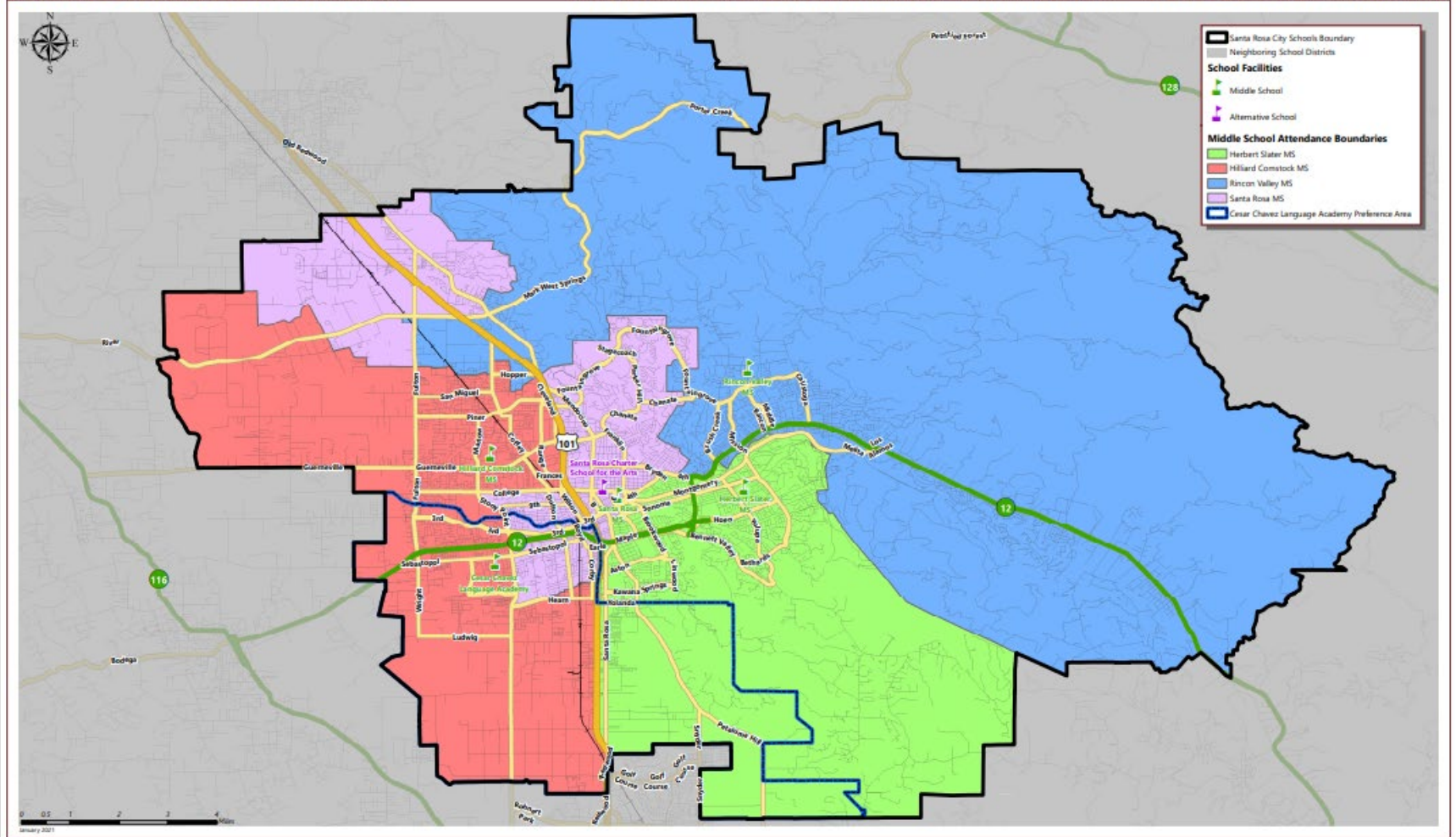
- Overwhelming number of schools that start at the same time, or near the same time
 - AM Bell Time
 - 18 schools starting between 8:00 – 8:10
 - 52 schools starting between 8:15 – 8:30
 - 14 schools starting between 8:35 – 9:00
 - PM Bell Time
 - 9 school ending between 2:00 – 2:15
 - 50 schools ending between 2:20-2:30
 - 17 schools ending between 3:10 – 3:40
- Changes to the secondary level bell times last year and this year due to legal requirements
 - Increased routes
- No changes to the elementary bell schedules
 - Increased routes

The reduction of 121 special needs students from pre-pandemic and post pandemic ridership should have reduced total number of routes by minimum of 15. However, the changes or lack of changes in bells times reduced our ability to obtain multiple tiered runs (more buses to transport fewer students) and caused an increase in routes from 75 in 21-22 to 77 in 22-23.

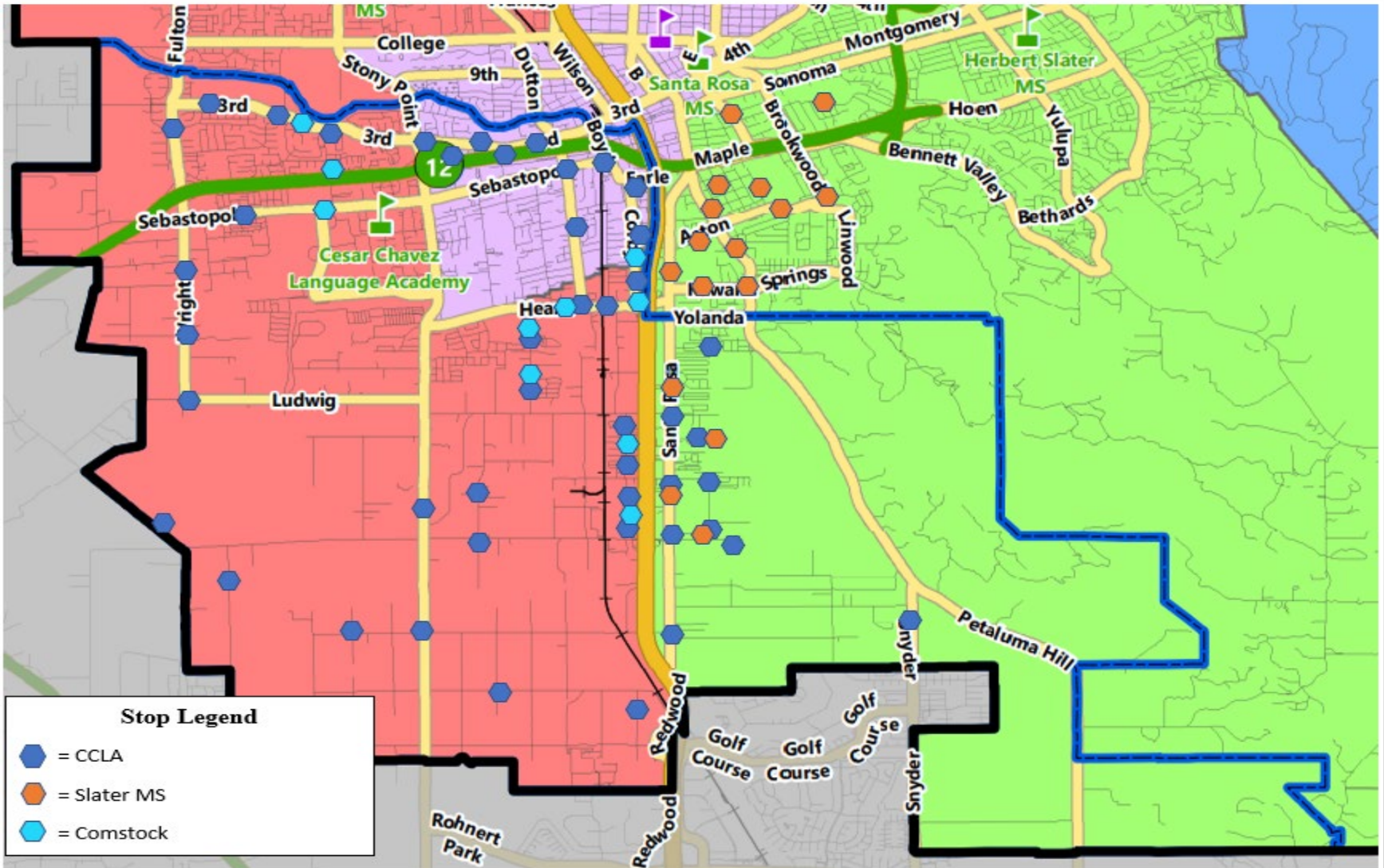
New Middle School Boundaries

SANTA ROSA CITY SCHOOLS

MIDDLE SCHOOL ATTENDANCE BOUNDARIES - SCHOOL YEAR 2021/2022



New Middle School Boundaries



California AB 181 (education omnibus budget trailer bill)

Final Budget: Provides \$637 million ongoing Proposition 98 General Fund to the Home to School Transportation LCFF add-on so LEAs can be funded at up to 60% of their transportation costs, or their current add-on, plus ongoing COLA. The budget also:

- Requires LEAs to develop a plan for how they will provide transportation services to their students, prioritizing low-income and those in TK-6.
- Requires the governing board to adopt the plan on or before April 1, 2023, and have it updated by April 1 each year thereafter.
- Prohibits LEAs from charging a fee for unduplicated pupils.

Final Budget: Provides \$1.5 billion one-time Proposition 98 General Fund to the California Energy Commission and California Air Resources Board to administer a zero-emission school bus program that will prioritize low-income and rural LEAs and LEAs purchasing electric school buses with bi-directional charging.