



CDPH Rescinded Mandate of Vaccine Verification for Workers in Schools

**& corresponding updates to the
SRCS COVID Safety Handbook
October 26, 2022**

SANTA ROSA CITY SCHOOLS
COVID-19 SAFETY HANDBOOK
2022-23 (updated 9-14-22) (updates in RED)





Topics for Review

- Considerations for rescinded mandate of Vaccine Verification for Workers in Schools
- Updates to the SRCS COVID Safety Handbook (since previous Handbook Update 9-14-22)

The information in the following slides provides additional information to guide discussion.

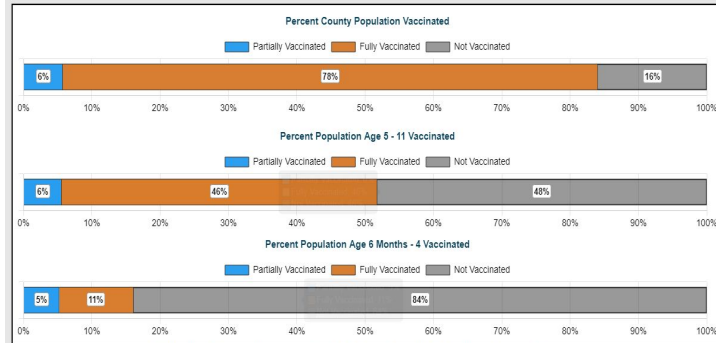
Considerations



Effective September 17, 2022, the Governor's Office rescinded the order that previously mandated verification of COVID vaccination status, and weekly testing for non-vaccinated personnel in schools.

Considerations

Vaccination status at a glance



socoemergency.org

Sonoma County currently has an estimated 84% of combined partially and fully vaccinated populace.

Population Immunity (Herd immunity) to COVID is considered to require an estimated 94% threshold to interrupt the chain of transmission.



Considerations

Sonoma County Vaccination Percentages by Race/Ethnicity

Race / Ethnicity	Individuals Partially Vaccinated	Individuals Fully Vaccinated	Percentage of Vaccine Recipients	Percentage of Population
White, non-Hispanic	11,999	240,779	64.5%	59.3%
Hispanic/Latino	9,028	91,882	25.8%	28.7%
Asian, non-Hispanic	1,018	16,330	4.4%	4.6%
Multi-racial, non-Hispanic	346	10,279	2.7%	5%
Black/African American, non-Hispanic	463	5,263	1.5%	1.5%
American Indian/Alaska Native, non-Hispanic	361	2,442	0.7%	0.6%
Native Hawaiian and other Pacific Islander, non-Hispanic	171	1,501	0.4%	0.3%
Other	2,805	18,802	-	-
Unknown	2,528	5,671	-	-



Considerations

Sonoma County Vaccination Percentages by Age Groups

Age Group	Individuals Partially Vaccinated	Individuals Fully Vaccinated	Percentage Partially or Fully Vaccinated
6 Months to 4	880	2,278	17.1%
5-11	1,838	15,875	51.7%
12-15	1,103	15,613	74.3%
16-24	3,810	40,784	75.8%
25-34	4,677	49,187	93.4%
35-44	4,077	55,092	89.2%
45-54	3,401	52,923	94.5%
55-64	3,387	59,992	90.3%
65-69	1,561	30,736	92.0%
70-74	1,479	27,927	94.4%
75 and Over	2,501	42,447	100.0%

Considerations



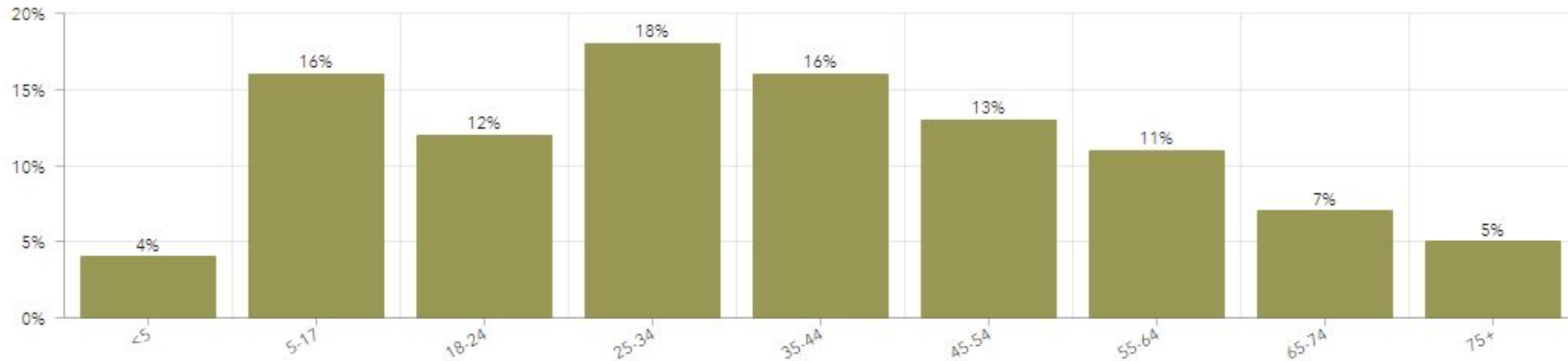
Sonoma County currently has the 9th highest vaccination rate per capita in the State of California

20% fewer cases of COVID reported per 100,000 than the State of California overall.

57% fewer COVID deaths per 100,000 than the State of California overall.

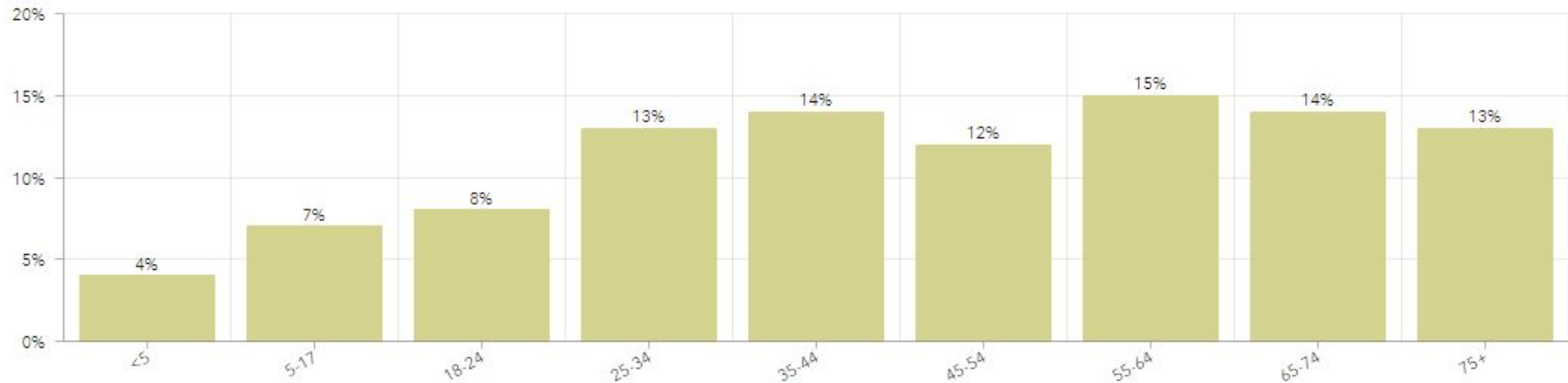
Considerations

Sonoma County Cases by Age Group, Over all Time



Considerations

Sonoma County Cases by Age Group, Past 60 Days



Considerations

Sonoma County Cases by Race/Ethnicity, Over all Time

Race/Ethnicity	Number of Cases	Percent of Cases	Percent of Population
Hispanic/Latino	41,055	43%	28.7%
White, non-Hispanic	44,965	48%	59.3%
Asian, non-Hispanic	4,074	4%	4.6%
Black/African American, non-Hispanic	1,835	2%	1.5%
Multi-racial, non-Hispanic	1,400	1%	5%
American Indian/Alaska Native, non-Hispanic	722	1%	0.6%
Native Hawaiian and other Pacific Islander, non-Hispanic	593	1%	0.3%
Other, non-Hispanic	5,465		
Unknown	8,069		

Considerations

Sonoma County Cases by Race/Ethnicity, Past 60 Days

Race/Ethnicity	Number of Cases	Percent of Cases	Percent of Population
Hispanic/Latino	886	30%	28.7%
White, non-Hispanic	1,772	60%	59.3%
Asian, non-Hispanic	159	5%	4.6%
Black/African American, non-Hispanic	80	3%	1.5%
Multi-racial, non-Hispanic	21	1%	5%
American Indian/Alaska Native, non-Hispanic	27	1%	0.6%
Native Hawaiian and other Pacific Islander, non-Hispanic	16	1%	0.3%
Other, non-Hispanic			
Unknown			

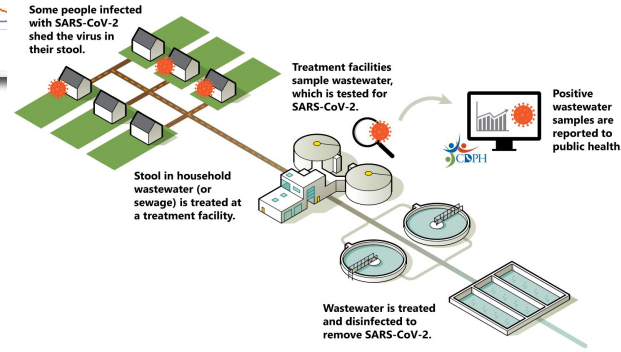
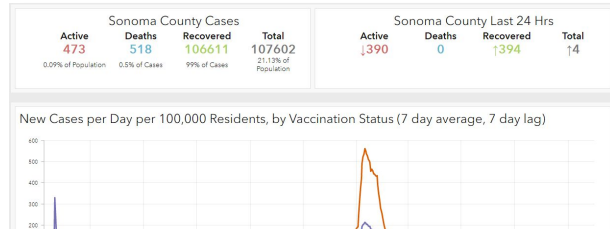
Considerations



- ❑ Increased distribution of at-home tests is hoped to broaden the range of detection for COVID presence.
- ❑ It is understood that positive results from at-home testing often do not get reported.
- ❑ Lack of reporting diminishes effective case tracking that measures infectious spread.
- ❑ At-Home testing entrusts the responsibility of individuals to observe appropriate protocols in responding to COVID presence.

Considerations

- Improved COVID tracking modalities (across communities and regions).



COVID Safety Handbook Updates (pending Board approval)

Removal of text referencing COVID testing mandates for unvaccinated or partially vaccinated personnel (pages 14 & 16)

COVID-19 Vaccinations - Staff

~~Under CDPH State Public Health Officer Order of August 11, 2021, All eligible staff are strongly recommended to be fully vaccinated (completed the primary series of COVID-19 vaccinations) as of April 4, 2022, and recommended to receive a booster, if eligible. Eligible staff who are unvaccinated, partially vaccinated (have not completed the primary series of vaccinations (1 dose Johnson & Johnson (Janssen) or 2 doses Pfizer or Moderna**), or who have chosen not to disclose vaccination status are required to enroll in mandated weekly COVID-19 testing. (see Student and Staff Testing below.)~~

- All volunteers including classroom volunteers, chaperones, snack bar workers, etc. shall follow the current vaccination guidelines for staff.
- All vendors respective and prospective must follow the same vaccination guidelines for staff.

~~**Other branded COVID-19 vaccinations introduced to the market after release of this Handbook update may be considered as options to satisfy Staff Vaccination requirements as long as they meet WHO, CDC and/or FDA approval for market or Emergency Temporary Standards:~~

~~Staff that are chaperones are recommended to be fully vaccinated and boosted if eligible. If not, then it is recommended that staff submit a negative antigen COVID test taken within 24 hours prior to the trip:~~

~~Volunteers are recommended to be fully vaccinated and boosted if eligible. If not, then it is recommended that volunteers submit a negative antigen COVID test taken within 24 hours prior to the day/week of volunteering:~~

SANTA ROSA CITY SCHOOLS

COVID-19 SAFETY HANDBOOK

2022-23 (updated 9-14-22) (updates in RED)



COVID-19 Community Level County Check

Find community levels and prevention steps by county

The California Department of Public Health and Sonoma County Department of Health Services align with the CDC COVID-19 Community Level data for regional masking guidance. To stay up-to-date on local masking recommendations based on "Low, Medium, High" COVID-19 Community Level go online to:
<https://www.cdc.gov/coronavirus/2019-ncov/your-health/covid-by-county.html>

Addition of CDC Masking Guidance by Region (page 7)



Thank You

Questions?