

**ViewSonic®** | Education

# ViewBoard® Interactive Flat Panel Displays

ViewSonic® IFP50 Series





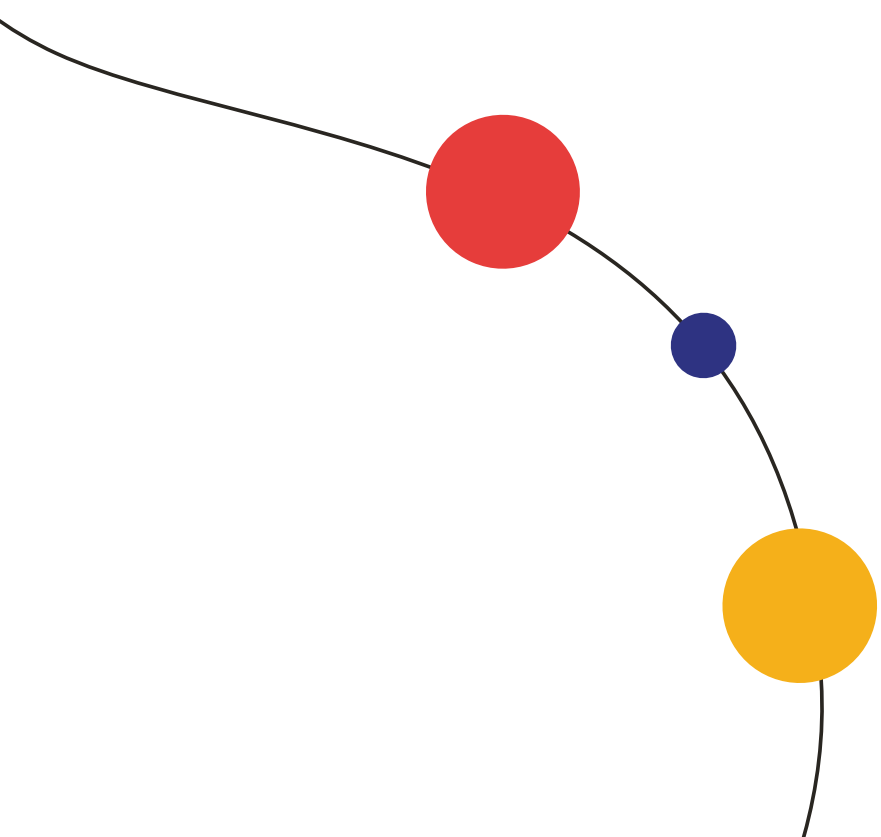
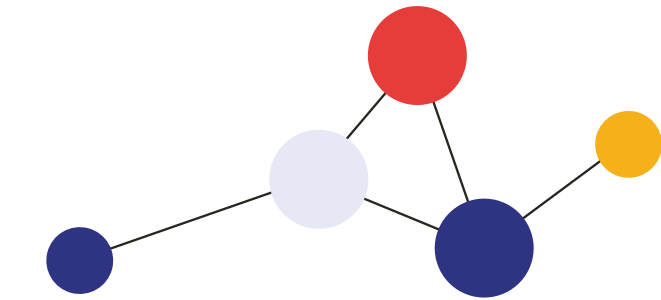
# Limitless Collaboration and Endless Creativity

Connect. Collaborate. Create.

Designed to help classrooms connect, collaborate and create, the IFP50 series of interactive displays delivers exactly what you need to drive engagement, energize and motivate students, and make teaching more fun.

Featuring state-of-the-art touch display technology, ViewBoard interactive displays deliver an ultra-smooth, natural handwriting experience.

With stunning 4K resolution, upgradeable slot-in PC options, and secure myViewBoard® software, these interactive displays offer a customizable, secure, and future-proof whiteboarding solution for any classroom or huddle space.



# ViewSonic myViewboard® software is a powerful tool that enables teachers to build dynamic lesson plans, import engaging content, and share lessons with students.

Whether yours is a Windows, Android, Mac or Chrome environment, myViewBoard works well with existing technology and seamlessly integrates into nearly any classroom.



Whiteboard

- **myViewBoard Whiteboard:** Whiteboard is a digital whiteboard designed to run on all operating systems. Whiteboard is ideal for use on large touchscreen displays, but will also run on non interactive screens such as a laptop screen, where mouse clicks replace touch for interaction.



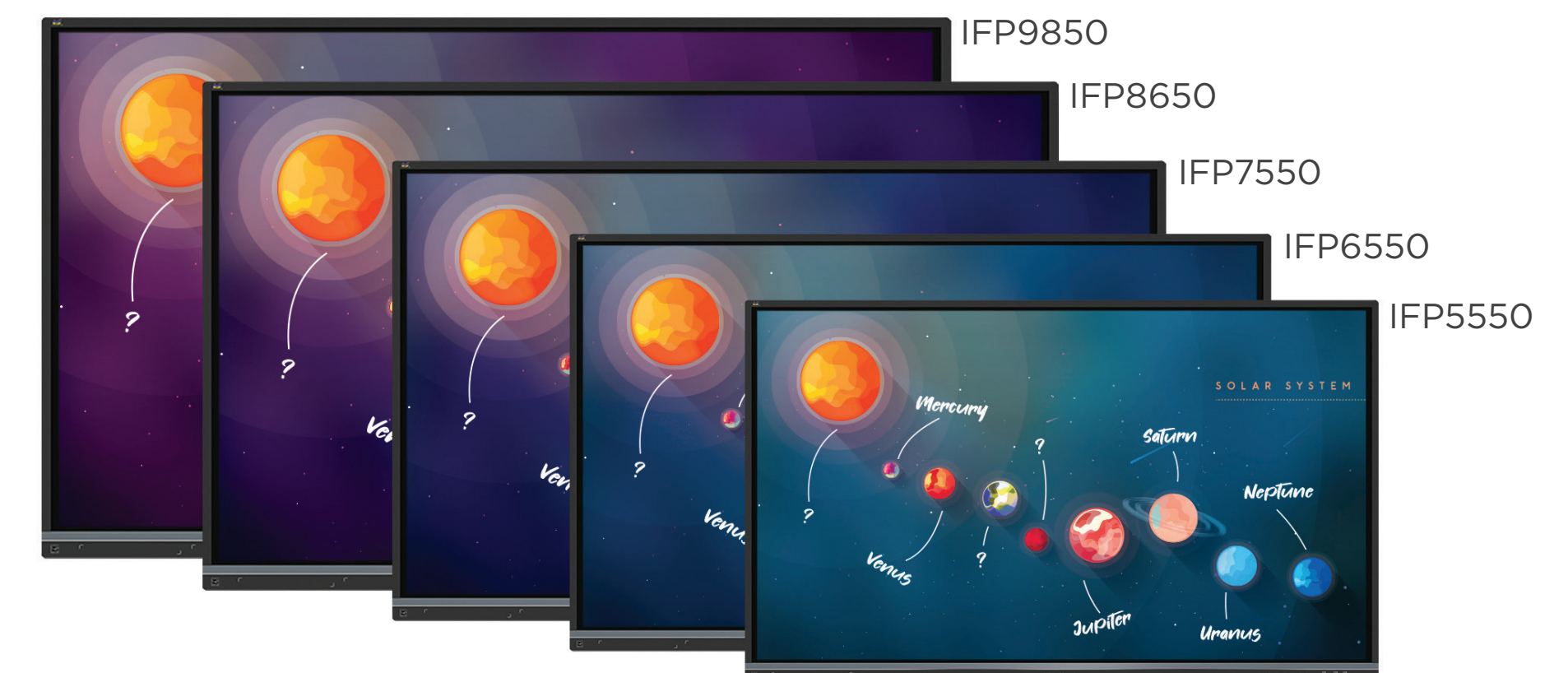
Manager

- **myViewBoard Manager:** The included myViewBoard Manager™ software enables IT admin to securely setup, manage and maintain all of your school's digital displays from a centralized dashboard.



Classroom

- **myViewBoard Classroom:** myViewBoard Classroom is an online teaching tool packed with a variety of features to help you effortlessly create and manage a classroom environment in the digital space that connects you to your students wherever they may be.



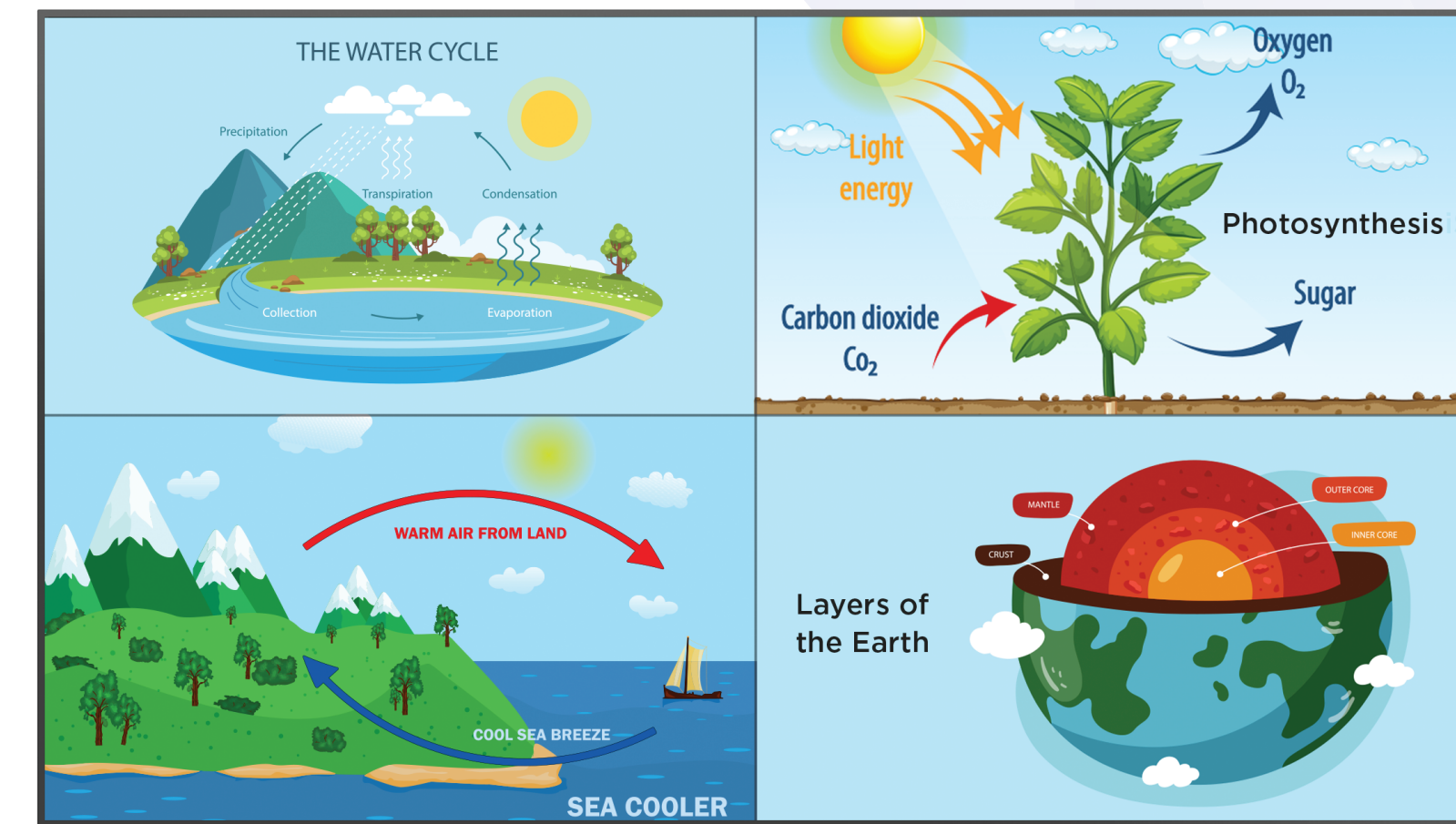
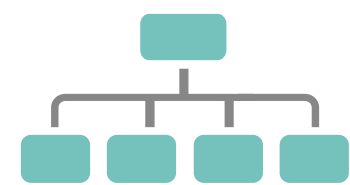


# ViewBoard Cast enables content streaming from any device onto a ViewSonic display over wireless or cable networks.

By investing in a ViewSonic CDE30 display, you will lower your total cost of ownership thanks to premium performance, advanced connectivity, and 24/7 always-on reliability. Streamline your presentations, enhance your lessons and succeed with our most connected display yet.



- **Wirelessly share content from any device:** wirelessly stream content from Windows, Mac, iOS, Android, and Chromecast devices onto a ViewSonic display. Instant streaming means no valuable meeting time or class time is wasted.
- **Multi-screen sharing:** Up to four users can simultaneously annotate content (such as documents, cloud files, multimedia, etc.) on their devices in real time. That content can then be streamed and shared onto the ViewBoard display via four split screens.
- **Remote touch control:** A host can remotely access and control a presenter's Windows or Mac device via touch control on the ViewBoard display. Touch annotations on the ViewBoard display will then appear on the controlled device.





**Drive Engagement,  
Energize and  
Motivate Students**





# ViewBoard Specifications

With a few simple add-ons, your ViewBoard display can become the ultimate integrated solution.

## Mobile Mounting Options

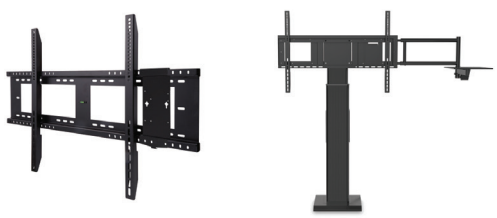
**VB-STND-001, VB-STND-002, VB-STND-003, VB-STND-005**

Sturdy rolling carts are certified UL and ADA compliant for safety and accessibility. Select models include motorized lift and tilt features.

## Fixed Mounting Options

**WMK-047-2, VB-STND-004**

Easy-to-install fixed wall mounts and floor stands are certified UL and ADA compliant for safety and accessibility.



## Windows® Slot-in PCs



### VPC Series

Provides additional computing power, touch functionality, and storage

## Chromebox



### NMP760

Delivers a familiar, easy-to-use Google interface for creating, saving, and sharing content

## Wireless Internet Module

### VB-WIFI-001

Delivers faster Wi-Fi and support for Bluetooth 5.0

## Webcams and Speakerphones

### VB-CAM-001

1080p ultra-wide USB camera with built-in microphone

### VB-AUD-001

Conference speakerphone with 360 degrees sound and four integrated microphone arrays

### VB-CAM-002

1080p USB camera with built-in camera and privacy lens

### VB-CAM-201

4K UHD Ultra-wide camera with speaker and four-microphone array with noise and echo cancellation

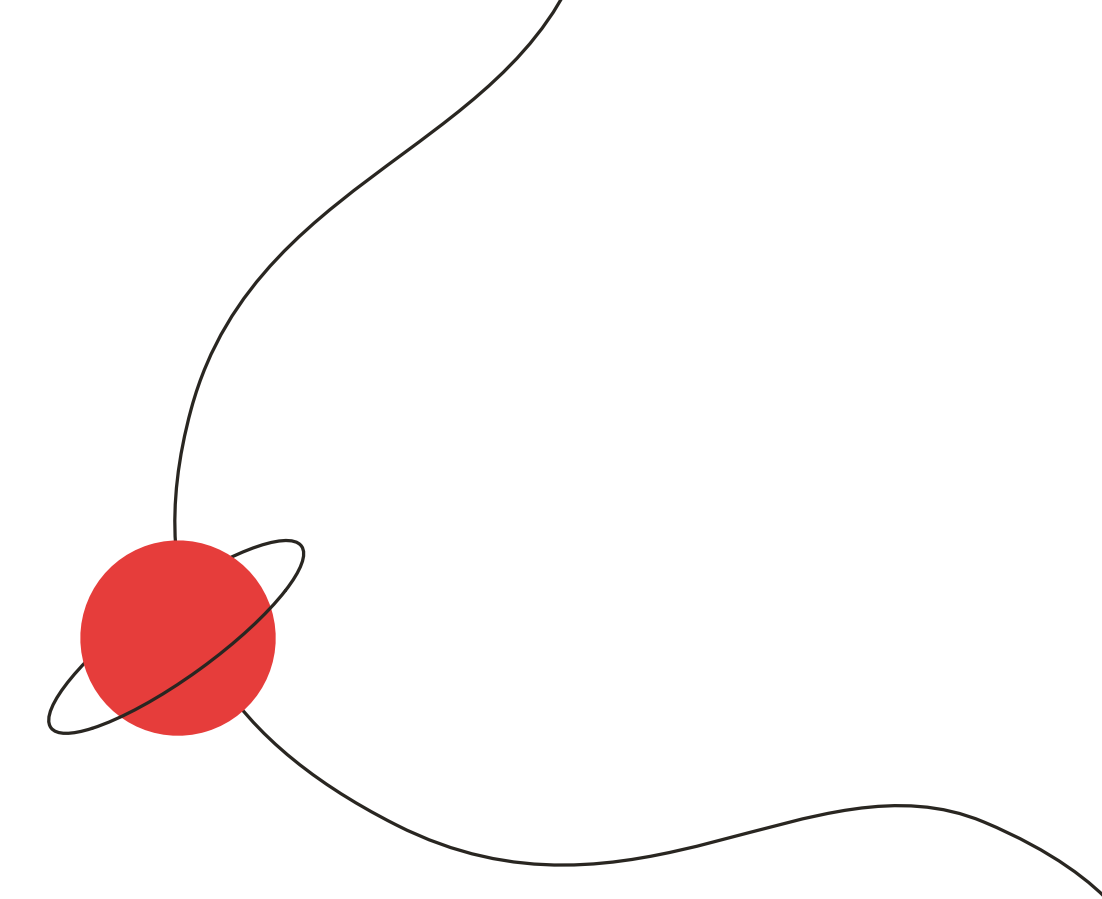
### VB-VIS-002

8-megapixel USB document camera with microphone



		ViewSonic ViewBoard IFP50-series Gen 3				
		IFP5550	IFP6550	IFP7550	IFP8650	IFP9850
Display	Size	55"	65"	75"	86"	98"
	Viewable	54.64"	64.5"	74.5"	85.6"	97.52"
	Resolution	4K 3840 x 2160	4K 3840 x 2160	4K 3840 x 2160	4K 3840 x 2160	4K 3840 x 2160
	Brightness	350 nits	350 nits	350 nits	350 nits	350 nits
	Contrast ratio	1200:1	1200:1	1200:1	1200:1	1200:1
Touch	Technology	ViewSonic Ultra-Fine Touch	ViewSonic Ultra-Fine Touch	ViewSonic Ultra-Fine Touch	ViewSonic Ultra-Fine Touch	ViewSonic Ultra-Fine Touch
	Touch point	20	20	20	20	20
	Tip detection	8mm and 3mm	8mm and 3mm	8mm and 3mm	8mm and 3mm	8mm and 3mm
	Support OS	Windows 10, Mac, Chrome	Windows 10, Mac, Chrome	Windows 10, Mac, Chrome	Windows 10, Mac, Chrome	Windows 10, Mac, Chrome
Glass	Hardness	7H	7H	7H	7H	7H
	Thickness	4mm	4mm	4mm	4mm	4mm
Input/ Output	Video	HDMI 2.0 x 3, VGA x 1	HDMI 2.0 x 3, VGA x 1	HDMI 2.0 x 3, VGA x 1	HDMI 2.0 x 3, VGA x 1	HDMI 2.0 x 3, VGA x 1
	Audio	1	1	1	1	1
	Audio-out	1	1	1	1	1
	SPDIF-out	1	1	1	1	1
	RJ45	1	1	1	1	1
	RS232 control	1	1	1	1	1
	HDMI-out	4K x 1	4K x 1	4K x 1	4K x 1	4K x 1
	USB	USB 3.0 x 2, USB 2.0 x 2 SmartPort USB Technology	USB 3.0 x 2, USB 2.0 x 2 SmartPort USB Technology	USB 3.0 x 2, USB 2.0 x 2 SmartPort USB Technology	USB 3.0 x 2, USB 2.0 x 2 SmartPort USB Technology	USB 3.0 x 2, USB 2.0 x 2 SmartPort USB Technology
	Touch USB	2	2	2	2	2
	Camera USB	1	1	1	1	1
Network	LAN	10/100/1000 GigaLAN	10/100/1000 GigaLAN	10/100/1000 GigaLAN	10/100/1000 GigaLAN	10/100/1000 GigaLAN
	Wireless Optional	802.11AC + Bluetooth 4.0 (VB-WIFI-001)	802.11AC + Bluetooth 4.0 (VB-WIFI-001)	802.11AC + Bluetooth 4.0 (VB-WIFI-001)	802.11AC + Bluetooth 4.0 (VB-WIFI-001)	802.11AC + Bluetooth 4.0 (VB-WIFI-001)
SOC	OS	ViewBoard OS 8	ViewBoard OS 8	ViewBoard OS 8	ViewBoard OS 8	ViewBoard OS 8
	CPU	ARM A73 Dual Core + A53 Dual Core 1.2GHz	ARM A73 Dual Core + A53 Dual Core 1.2GHz	ARM A73 Dual Core + A53 Dual Core 1.2GHz	ARM A73 Dual Core + A53 Dual Core 1.2GHz	ARM A73 Dual Core + A53 Dual Core 1.2GHz
	RAM	3GB DDR4	3GB DDR4	3GB DDR4	3GB DDR4	3GB DDR4
	Storage	32GB	32GB	32GB	32GB	16GB
Software	Whiteboard	myViewBoard Whiteboard (Windows, Android, iOS, Web)	myViewBoard Whiteboard (Windows, Android, iOS, Web)	myViewBoard Whiteboard (Windows, Android, iOS, Web)	myViewBoard Whiteboard (Windows, Android, iOS, Web)	myViewBoard Whiteboard (Windows, Android, iOS, Web)
	Real-time collaboration	myViewBoard Classroom	myViewBoard Classroom	myViewBoard Classroom	myViewBoard Classroom	myViewBoard Classroom
	Screencasting (vCast)	AirPlay, Chromecast, Windows and Mac with passcode protection	AirPlay, Chromecast, Windows and Mac with passcode protection	AirPlay, Chromecast, Windows and Mac with passcode protection	AirPlay, Chromecast, Windows and Mac with passcode protection	AirPlay, Chromecast, Windows and Mac with passcode protection
	Device management	myViewBoard Manager	myViewBoard Manager	myViewBoard Manager	myViewBoard Manager	myViewBoard Manager
Reliability		30,000 hours	30,000 hours	30,000 hours	30,000 hours	30,000 hours
Speaker		10Wx2 + 15W subwoofer	10Wx2 + 15W subwoofer	10Wx2 + 15W subwoofer	10Wx2 + 15W subwoofer	12W x 2
Optional Windows PC		Yes	Yes	Yes	Yes	Yes
VESA		400 x 200	600 x 400	800 x 400	800 x 400	800 x 400
Power consumption		81W	104W	138W	155W	171W
Shipping Weight (kg/lbs)		39kg / 86lbs	47kg / 102.6lbs	65kg / 143.3lbs	92kg / 202.8lbs	105kg / 223.8lbs
Net Weight (kg/lbs)		31kg / 68.34lbs	40kg / 88.85lbs	53kg / 116.8lbs	69.7kg / 153.66lbs	101.5kg / 223.77lbs
Shipping Dimensions (mm/in)		1428 x 878 x 220mm / 56.2 x 34.6 x 8.7in	1669 x 1010 x 223mm / 65.7 x 39.8 x 8.8in	1930 x 1140 x 280mm / 76 x 44.9 x 11in	2123 x 1345 x 280mm / 83.6 x 53 x 11in	2483 x 1493 x 376mm / 97.8 x 58.8 x 14.8in
Net Dimensions (mm/in)		1268 x 773 x 85mm / 49.9 x 30.4 x 3.3in	1488 x 897 x 90mm / 58.6 x 35 x 3.5in	1710 x 1020 x 90mm / 67.3 x 40.2 x 3.5in	1958 x 1160 x 90mm / 77.1 x 45.7 x 3.5in	2245 x 1323 x 91mm / 88.4 x 52.1 x 3.6in
Compliance		UL(tUV), NRTL, Energy Star 8, FCC	UL(tUV), NRTL, Energy Star 8, FCC	UL(tUV), NRTL, Energy Star 8, FCC	UL(tUV), NRTL, Energy Star 8, FCC	UL(tUV), NRTL, Energy Star 8, FCC
Others		Asset tagging, Android lockdown, Cast lockdown, USB cloning, Flicker-free, Blue light protection	Asset tagging, Android lockdown, Cast lockdown, USB cloning, Flicker-free, Blue light protection	Asset tagging, Android lockdown, Cast lockdown, USB cloning, Flicker-free, Blue light protection	Asset tagging, Android lockdown, Cast lockdown, USB cloning, Flicker-free, Blue light protection	Asset tagging, Android lockdown, Cast lockdown, USB cloning, Flicker-free, Blue light protection





## TO LEARN MORE

[viewsonic.com](http://viewsonic.com) | (888) 881-8781 | [salesinfo@viewsonic.com](mailto:salesinfo@viewsonic.com)

## CONNECT WITH US

[twitter.com/viewsonic](https://twitter.com/viewsonic) | [facebook.com/viewsoniccorp](https://facebook.com/viewsoniccorp)

Program, pricing, specifications and availability are subject to change without notice. Corporate names and trademarks stated herein are the property of their respective companies.  
Copyright © 2022, ViewSonic Corporation. All rights reserved. [22VWB-EDU1544]

**ViewSonic®**  
Education