



Santa Rosa City Schools

2020-21 Learning Continuity and
Attendance Plan Overview

September 23, 2020

Background: Senate Bill (SB) 98



Suspended Local Control and Accountability Plan (LCAP) and annual LCAP update for 2020-21



Created a new requirement, the Learning Continuity and Attendance Plan, to be adopted by September 30, 2020



Established that the California School Dashboard performance data will not be published in December 2020



Maintained Budget Overview for Parents, to be adopted by December 15, 2020

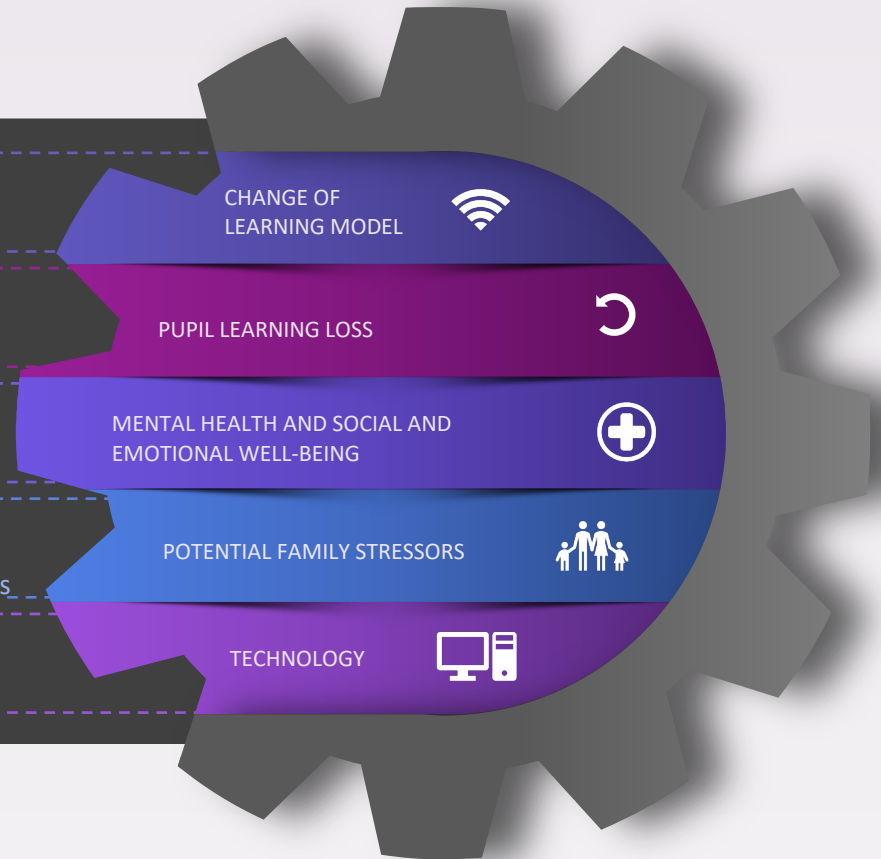


THE LEARNING CONTINUITY AND ATTENDANCE PLAN



COVID-19 FACTORS IMPACTING OUR DISTRICT AND COMMUNITY

- In-person learning suspended March 26, 2020
- Shift to fully remote learning since the spring
- Rhythm and progression of learning interrupted
- Annual assessments difficult to administer remotely
- Social and emotional health negatively impacted by shelter-at-home orders and resulting isolation
- Supporting remote learning
- Economic, housing, or food insecurity due to lost income or jobs
- Connectivity and tech support challenges
- Ensuring 1:1 devices and equitable learning platforms

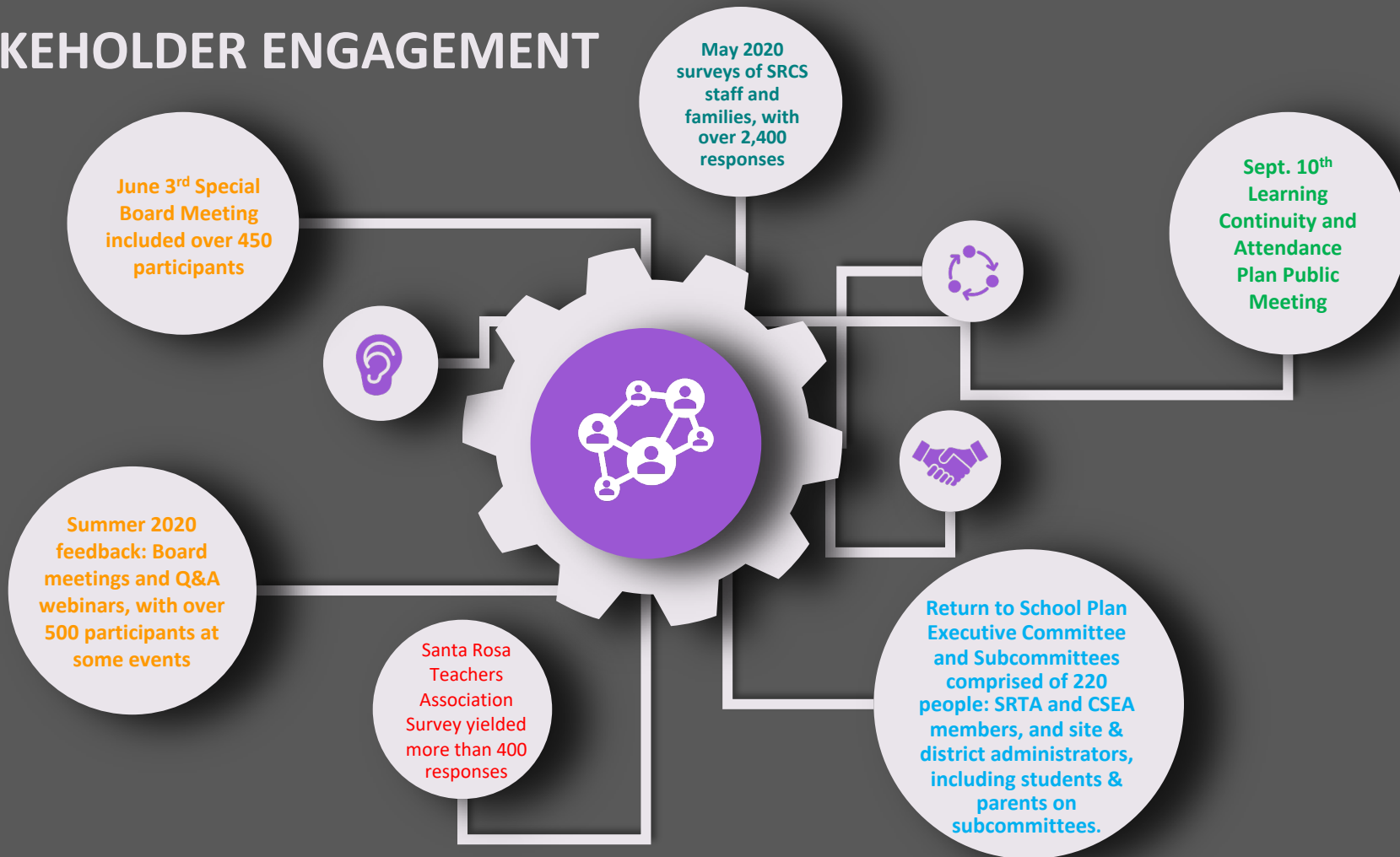


PLAN COMPONENTS

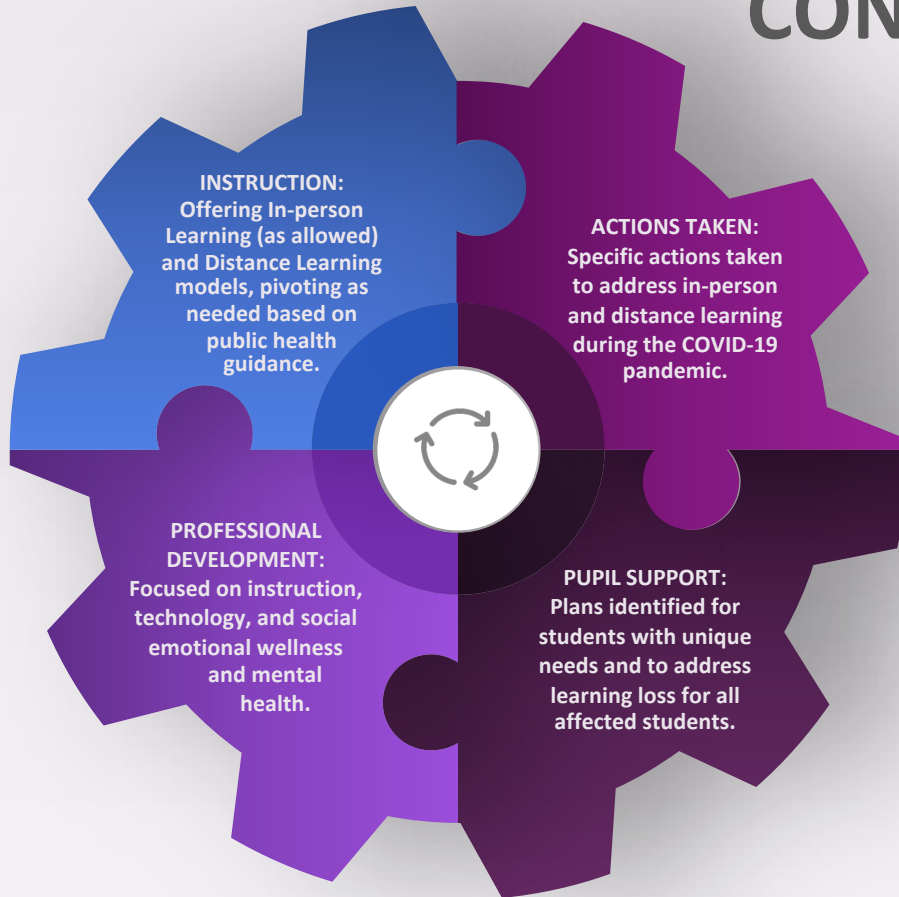


- Stakeholder Engagement
- Continuity of Learning
- Mental Health and Social and Emotional Well-being
- Pupil and Family Engagement and Outreach
- School Nutrition

STAKEHOLDER ENGAGEMENT



CONTINUITY OF LEARNING



- All learning models' instruction grounded in best practices and aligned to essential California standards and Board-approved curriculum.
- Some actions taken: COVID-19 Coordinator; PPE; sanitation; additional Chromebooks for 1:1 student access; improved technology infrastructure and connectivity; additional software to support equitable remote learning.
- Specific plans in place for English Learners, Students with IEPs, Foster & Homeless Youth, Advanced Learners (grades 4-6), Independent Study, and Home & Hospital.
- Specific strategies identified to address learning loss, with formative assessments and performance tasks to measure effectiveness.
- Weekly professional development and common planning time to support teaching and learning, as negotiated between SRCS and SRTA.

MENTAL HEALTH AND SOCIAL AND EMOTIONAL WELL-BEING



Social and Emotional Learning (SEL) prioritized to build safe and inclusive classroom communities, using resources such as The Toolkit and the Belonging Curriculum from Project Wayfinder.



Multi-tiered System of Supports (MTSS) and universal screener in place to ensure timely referrals and intervention services for students, families, and staff.



Communication at District, site, and community level integral to serving student, families, and staff. Increased counselors, licensed therapist, and restorative specialist.



Professional Development focused on BEST+, SEL, Trauma Informed Care, Restorative Practices, and Mental Health First Aid.



PUPIL AND FAMILY ENGAGEMENT AND OUTREACH

Attendance



Attendance taken daily for each student and recorded in District's Student Information System.

Specific criteria established to identify how attendance is met for the Distance Learning model.

Attendance Criteria



Engagement



A tiered reengagement process, including clearly identified roles, established to follow up with absent students and their families to foster engagement and school attendance .

SCHOOL NUTRITION



Percentage of students eligible for Free and Reduced Price Meals last year:

- Elementary: 55.3%
- Secondary: 39.2%

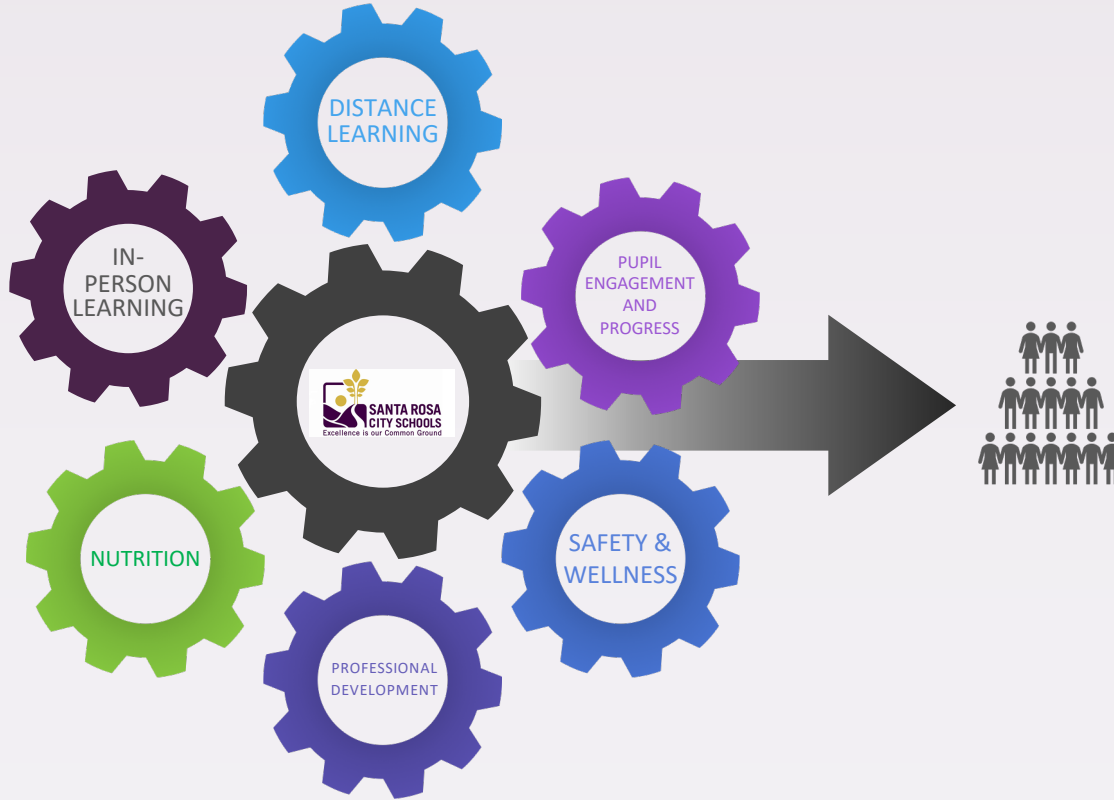
Child Nutrition Services (CNS) provided 517,977 “Grab & Go” meals, improving distribution through partnership with Redwood Empire Food Bank. Barcode system sped up delivery.

CNS has expanded meal service times to better meet family needs, now with 3 pick-up times per weekday at identified sites. Free meals to children 18 and under through Dec. 31, 2020.

CNS and sites conducting bilingual outreach efforts to get more meal applications completed, using social media, flyers, paper applications, and personal phone calls.

A hungry child cannot learn.

NEXT STEPS



Approve Plan by September 30, 2020.

Submit approved Plan to Sonoma County Office of Education.

Continue to:

- be guided by our Mission, Vision, and Priorities;
- work in partnership with CSEA, SRTA, and the Community to identify best practices, ideas, and solutions;
- follow Federal, State, County, and Local public health guidance to ensure safety; and
- engage in Cycles of Inquiry to identify and resolve issues collaboratively, using data and evidence to drive the process.

QUESTIONS?

