

The International Network at WCCUSD

Transforming education for multilingual learners



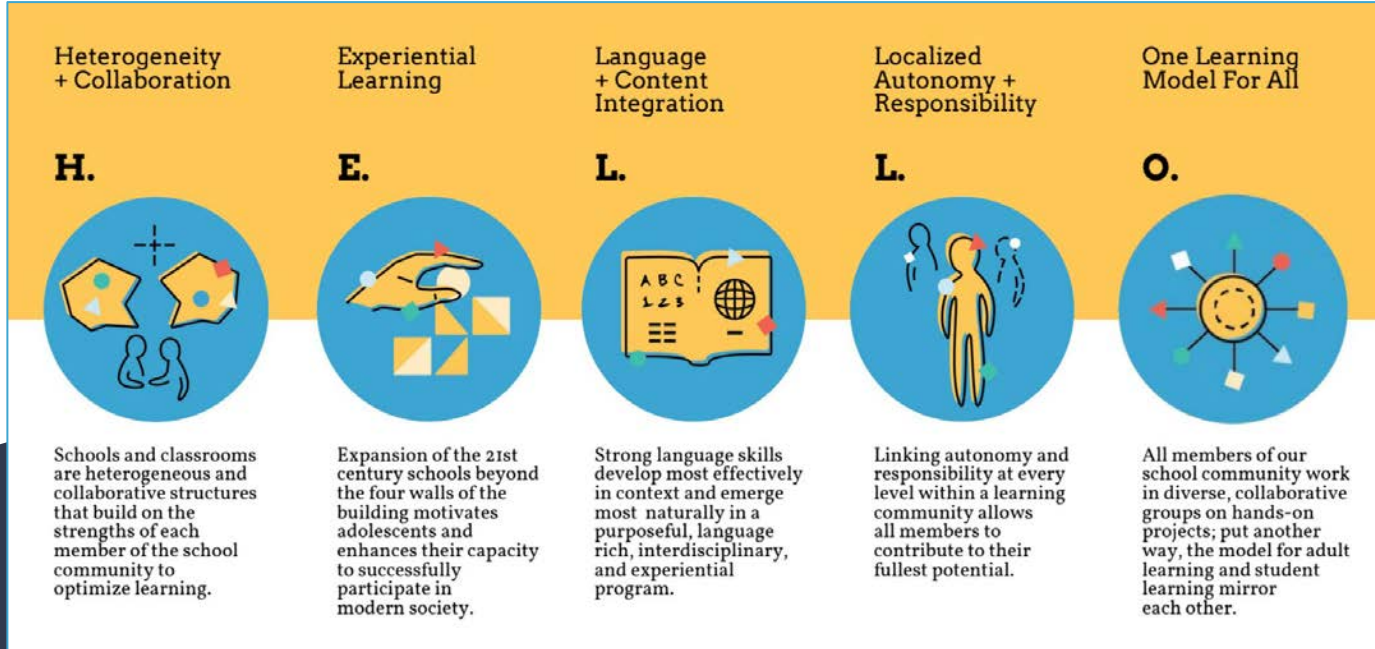
A Common Vision with WCCUSD

International Network's vision is to ensure that all recent immigrant students who are English Language Learners have access to a quality school education that prepares them for college, career and full participation in democratic society, thereby opening doors to the American Dream.



Acclaimed Professional Development

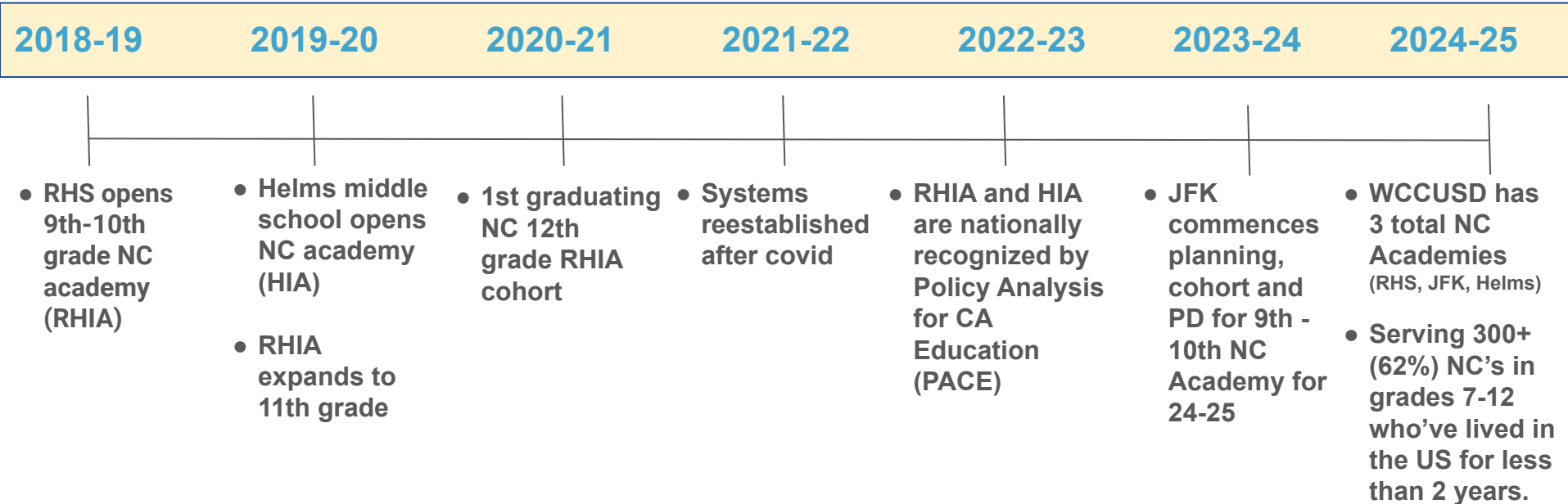
- The Internationals Network's unique and acclaimed approach to professional development embodies the creative, collaborative, and equity-driven spirit of the school communities we serve. By bridging conceptual frameworks with concrete, immediately applicable strategies and resources, Internationals Network professional development prepares participants to partner with one another and with the students and families they serve.



Why Internationals Model For Newcomer Students?

- Students participate in intentionally planned newcomer & English Learner lessons
 - **Lessons are thematic**
 - **Collaborative structures that support language acquisition**
 - **CCSS and ELD standards aligned**
 - **Utilizes universally designed pedagogy**
 - **Summative end of semester portfolios with presentations**
- Students in 7th-10th grade are cohorted together (and travel together)
- Students participate in elective courses
- High School International newcomers take A-G approved courses
- Teachers have a required common prep period during the instructional day
- Closes the achievement gap by supporting recently arrived ELs 2 years or less in USA

International Newcomer (NC) Academies in WCCUSD Timeline



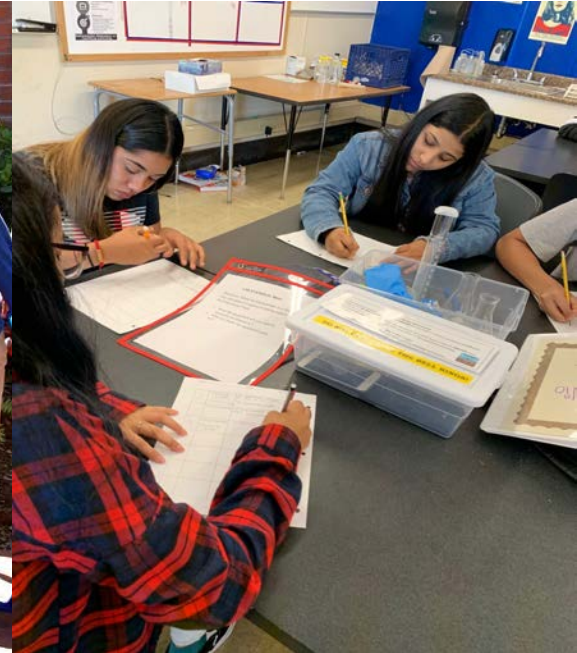
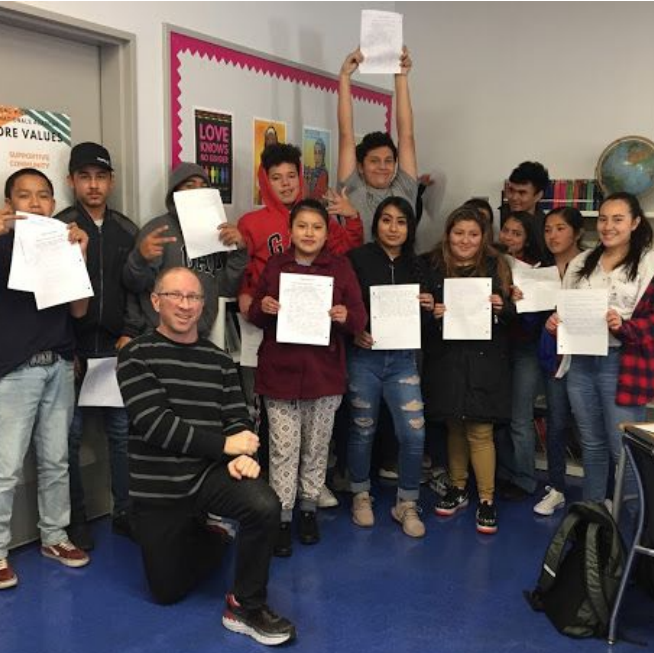
Internationals Newcomer Model Success Data

	# of Students in RHIA Model	On track to graduate/graduated	A-G Eligible	Post Secondary Plan	4 Year College
20-21	39	19/49 (48%)	30/39 (76%)	21/39 (53%)	9
21-22	44	100%	14/44 (31%)	24/44 (54%)	3
22-23	51	47/51 (92%)	14/51 (27%)	37/51 (72%)	6
23-24	48	43/48 (90%)	12/48 (25%)	31/48 (65%)	5
		Note: 22-23 CA grad rate was 86.4% 22-23 district grad rate is 83.8 % 22-23 EL grad rate is 70.7%			
		In 19- 20 EL grad rate was 60%	Note: In 12-20 ELD 1&2 Newcomer A-G was 7%		

**ELPAC Overall 23% increased
in ELPAC Level**

Note: compared to 21% of school
with similar population

What are students saying about their experience in Newcomer Internationals Academies?

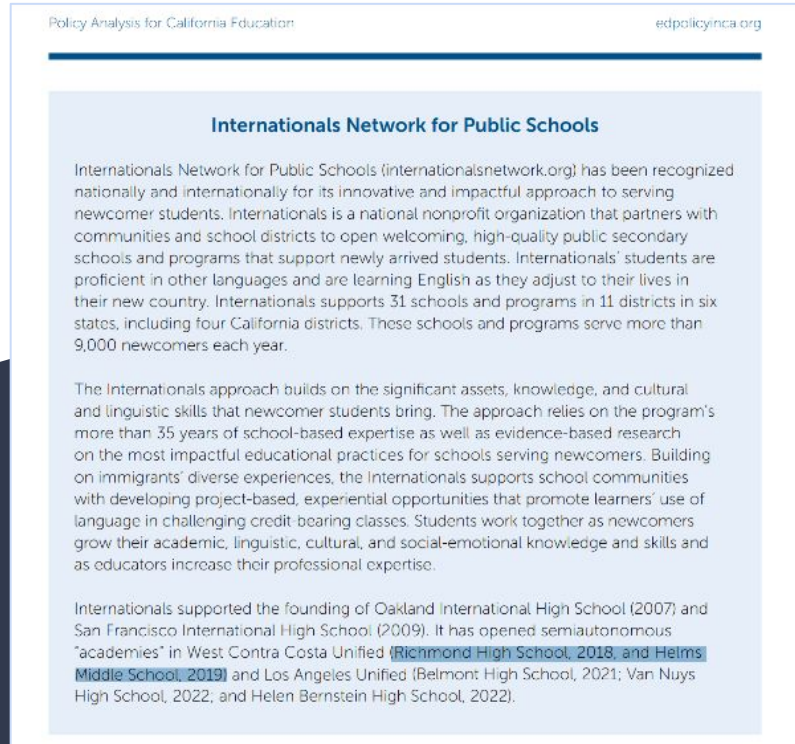
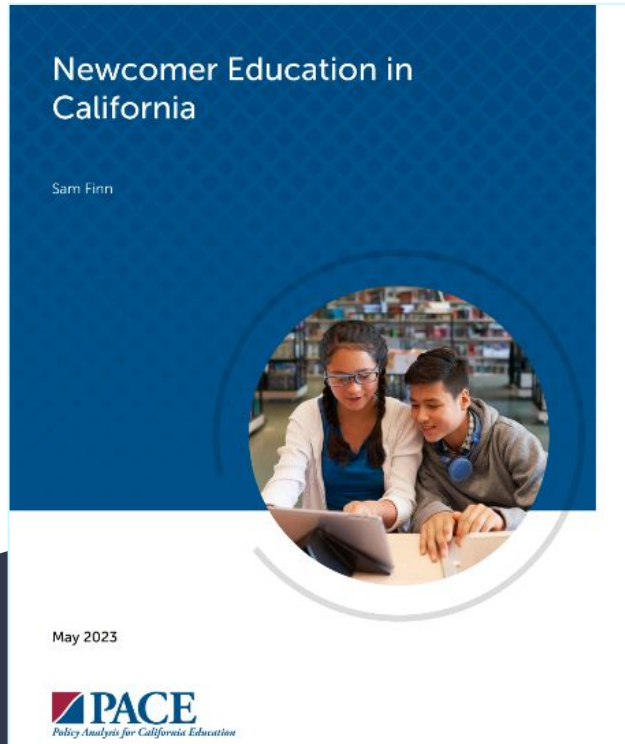


What are educators saying about their experience in Newcomer Internationals Academies?



National Recognition for WCCUSD

The [Newcomer Education in California](#) Report released May 2023 highlights our Newcomer Model Programs at Richmond High and Helms Middle School.



Thank you!

Questions and Comments

