

Preliminary Enrollment Update

August 2019

Prepared by Heidi Whatley

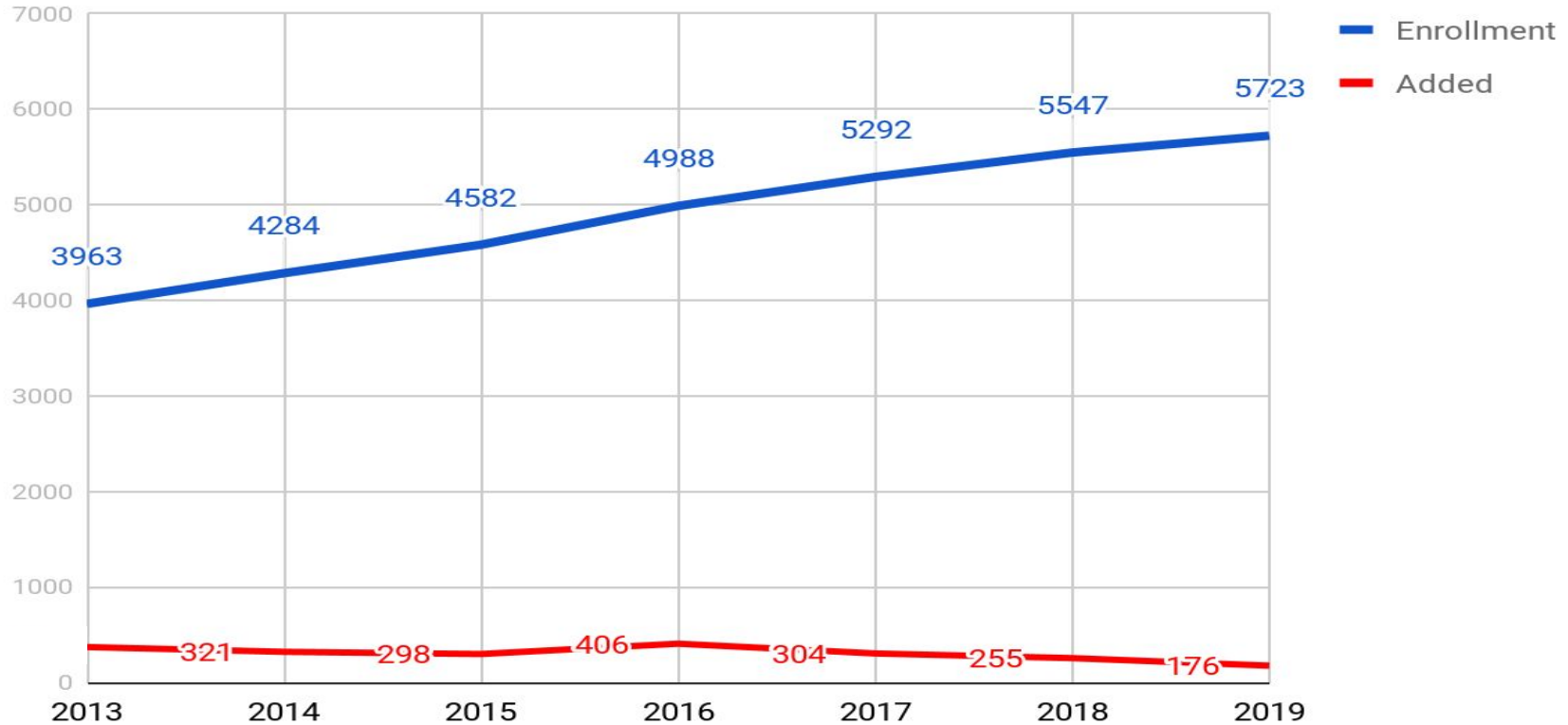


Goal

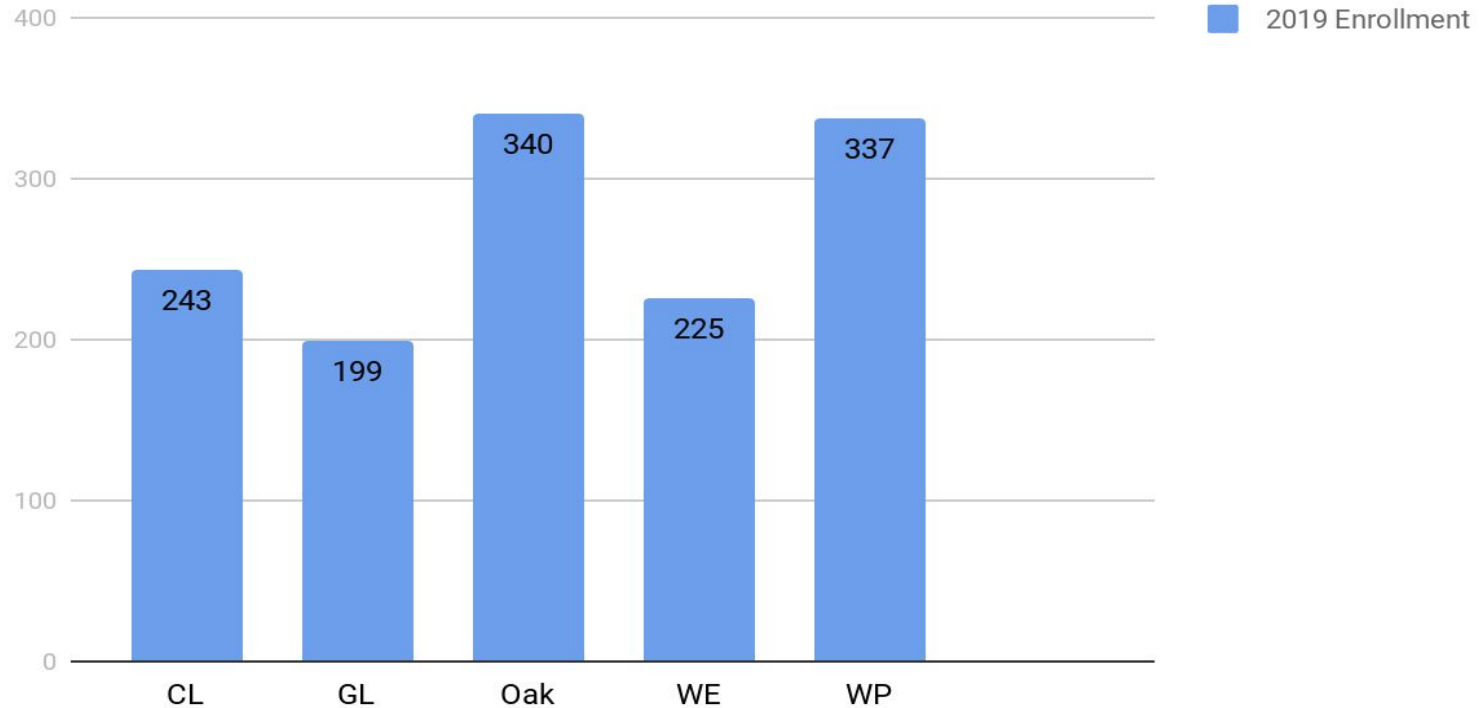
- Provide a snapshot of enrollment August to August
- Numbers will change*
- **Data should be interpreted with caution**

*The data in this update is accurate as of August 6, 2019

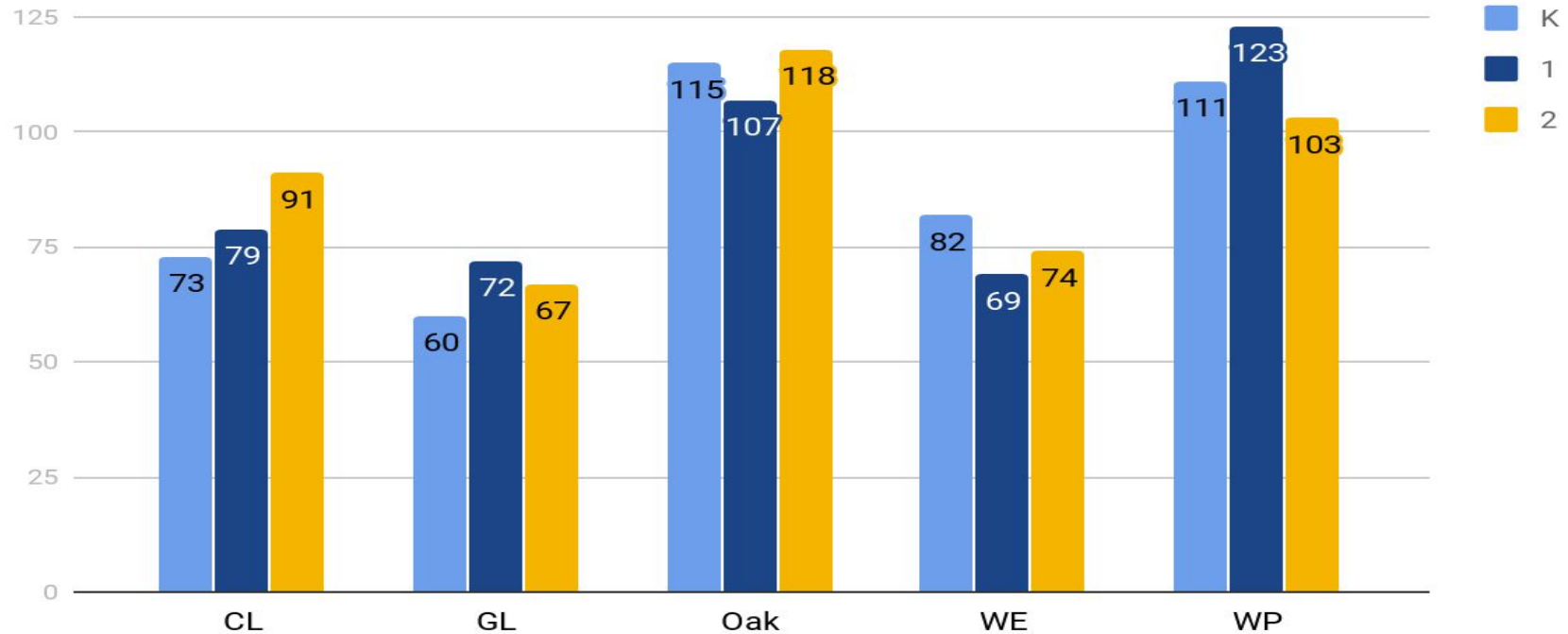
K-12 Total Enrollment August



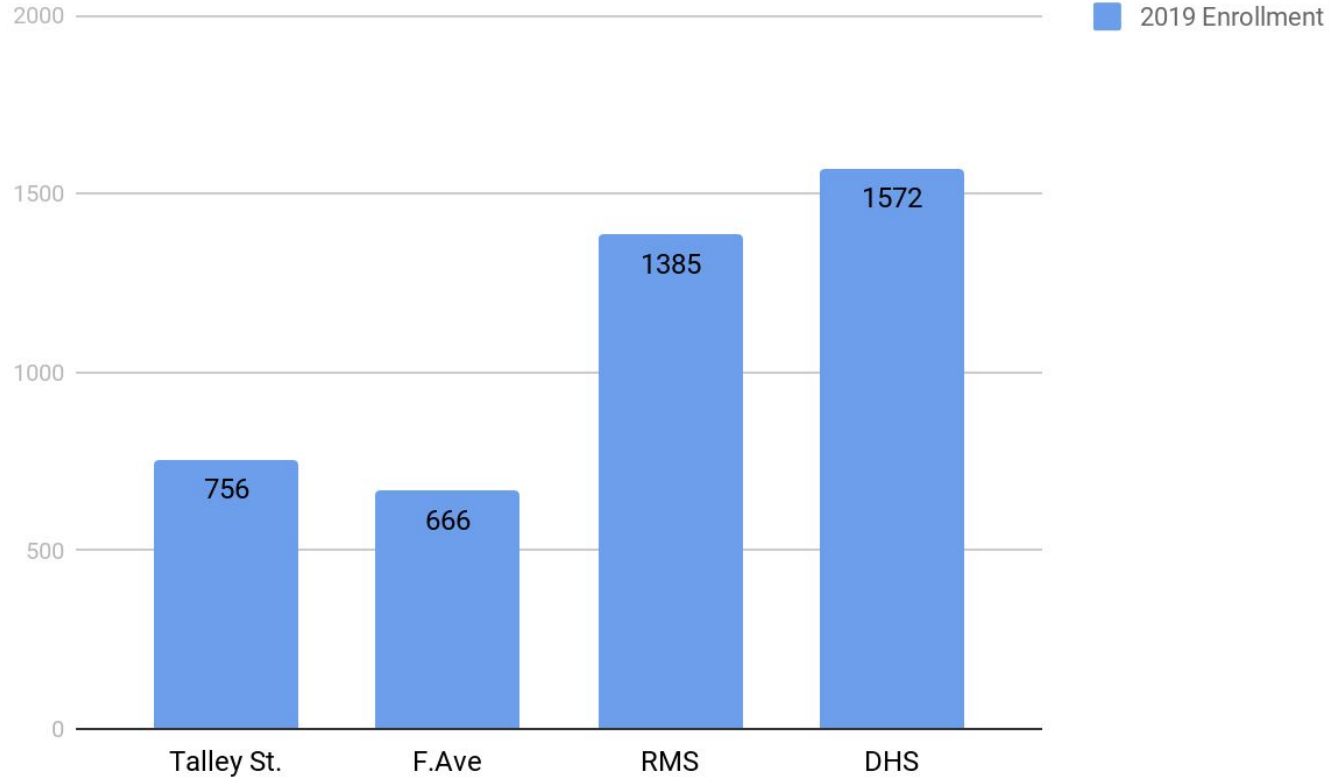
K-2 Total Enrollment



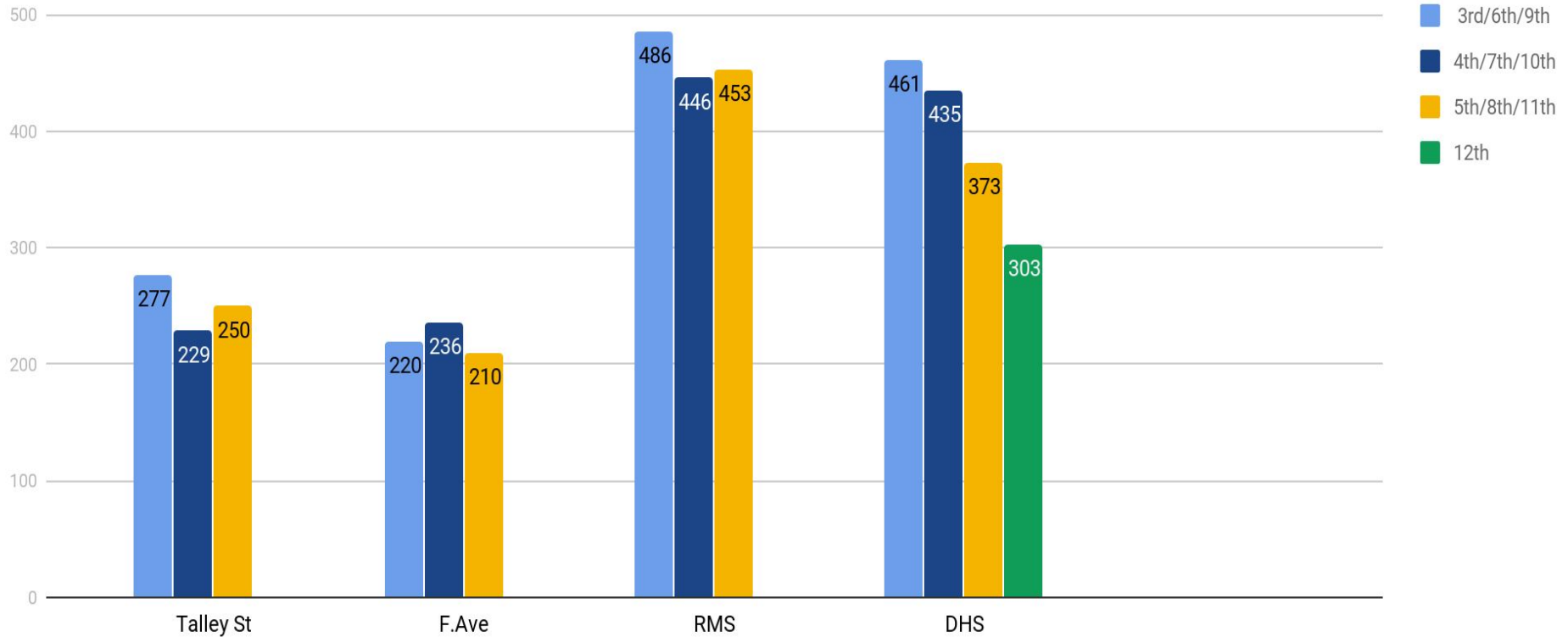
K-2 Enrollment by School and Grade



3-12 Enrollment

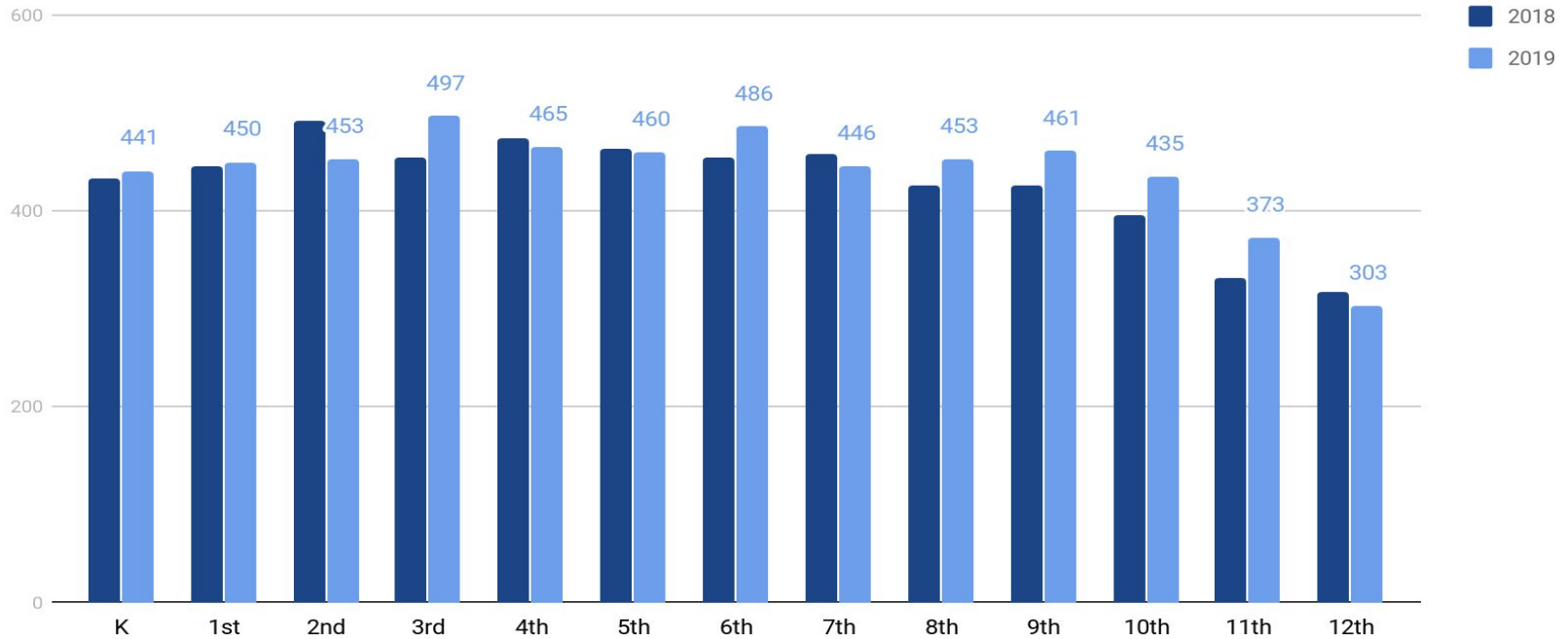


3-12 Enrollment by School and Grade

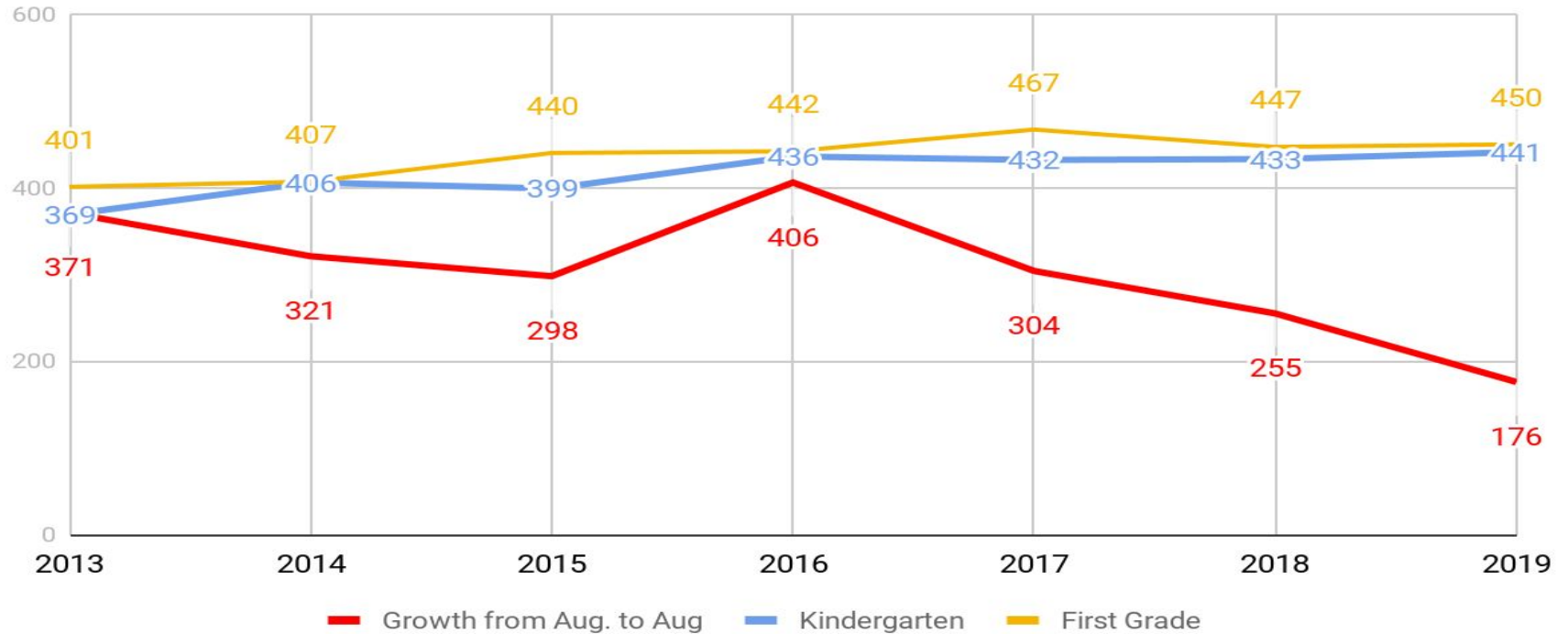


Enrollment by Grade K-12

Enrollment by Grade 2018 and 2019



Total Growth Compared to K and 1st



Increase/Decrease by Grade Band

Lower Elementary (K-2)	Decrease by 27 students
Upper Elementary (3-5)	Increase by 30 students
Middle School (6-8)	Increase by 55 students
High School (9-12)	Increase by 87 students

Preliminary Observations

- Enrollment continues to grow
- Number of students added each year is declining
- Enrollment is up in grades K, 1, 3, 6, 8, 9, 10, 11
- Enrollment is down in grades 2, 4, 5, 7, 12
- Kindergarten numbers are holding steady
- The number of students added at first grade has decreased in the past two years from the four years prior (38, 34, 43, 31, 15, 17)