



# 2018-19 Class Size Capacity Impact

## BOARD OF EDUCATION WORK SESSION

Aaron Marcin, Principal, Lead Mine Road Elementary School

Kristen Faircloth, Principal, Sycamore Creek Elementary School

September 5, 2017

# The Challenge - Recap

- Approximately 49,900 K-3 students in 2018-19 will have 559 fewer classrooms or approximately 9,500 less seats
- Another 2,500 additional K-3 students are expected by 2021, needing an additional 28 classrooms or approx. 480 seats

# The Challenge - Recap



Every School

Has unique situations

Every Area

Has unique needs

All Schools focus on

Teaching and learning

# Parameters for Determining Recommendations

- School Crowding Percentages and School Crowding with Trailers Percentages are based on Students Registered as of August 25, aged forward and Kindergarten repeated.
- Crowding Percentages do not reflect the 2018-19 potential redistricting proposal's impact on surrounding schools
- Information provided at principal work sessions on 7.20, 8.01 & 8.07 and their feedback on 8.30
- Egress and Building Code Requirements
- Identify Available Trailers & Where They Could be Added
- New Schools & Renovation Schedule
- Anticipated Growth/ Base Attendance Percentages

# To make it happen per Principal input, approximately ...

- 40 anticipate converting Collaborative, Computer, etc. classrooms
- 24 anticipate converting Special Ed classrooms (CCR/Resource), to include some moving select level II programs upstairs, out of Special Ed suites
- 70 anticipate converting some General Ed classrooms (LEP, AIG, Intervention, etc.)
- 39 anticipate converting Other classrooms (i.e. magnet, electives, Guidance, etc.)
- 9 anticipate converting Art or Music
- 48 anticipate converting both Art and Music
- 64 anticipate combo classes in at least 2 grades
- 43 anticipate 4<sup>th</sup>-5<sup>th</sup> grade classes greater than 29

*...if nothing changes*

# Updated Data

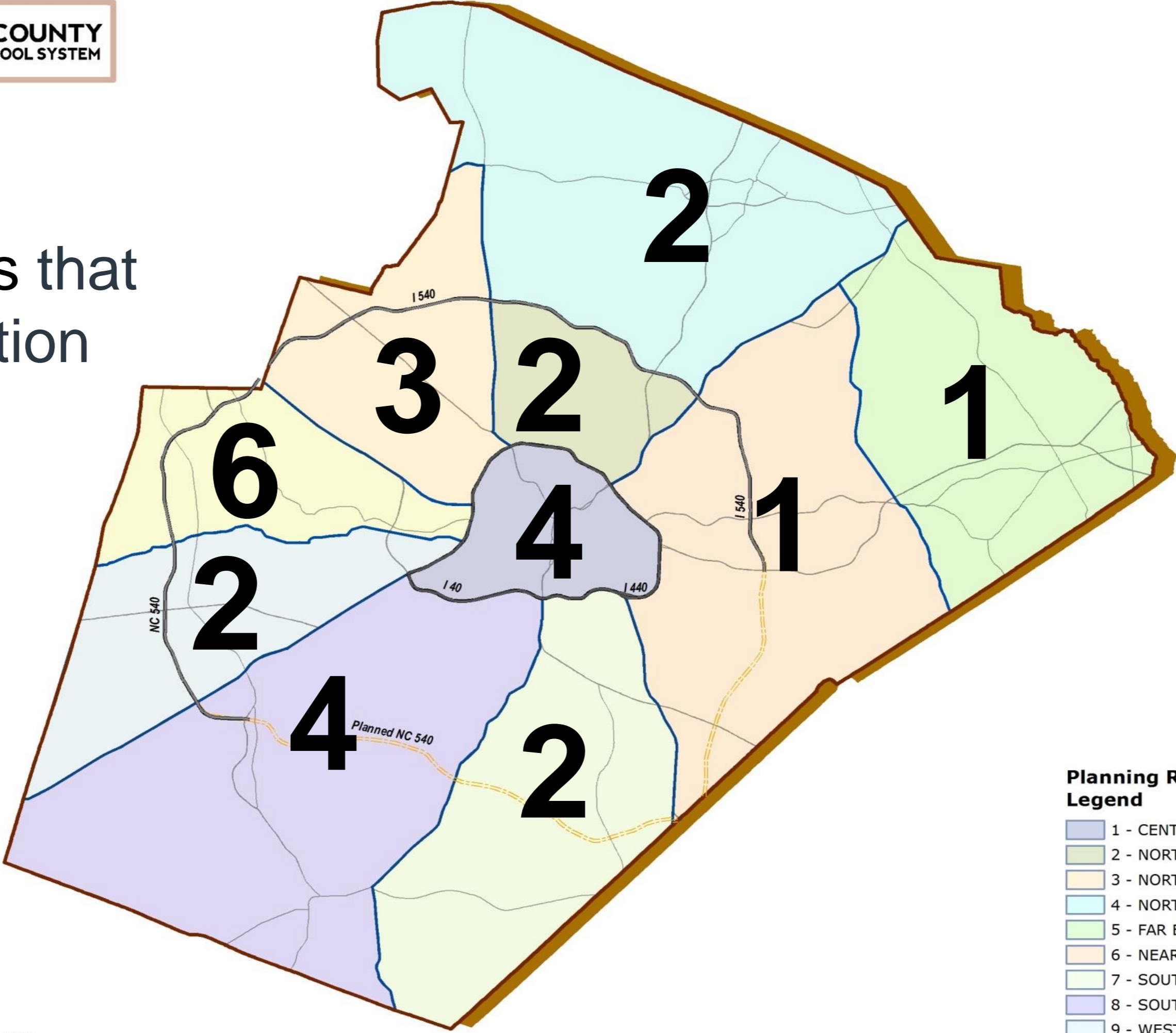
- 113 Elementary school principals provided information at work sessions on 7.20, 8.01 8.07 and additional feedback on 8.30
- 22 anticipate making it work without any impact to their educational program
  - 64 anticipate making it work with some program adjustments and/or classroom reassignments, or adding trailers (i.e. combo classes, enhancement classroom conversions such as art, music, collaboration, general ed, and special ed, 4<sup>th</sup>-5<sup>th</sup> grade classes greater than 29)
  - 27 anticipate needing interim options that would require board action
- 113

*See detailed list of schools with interim options*

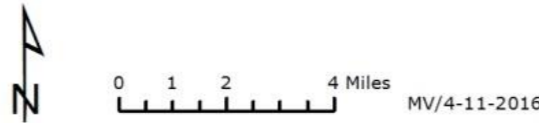
# Planning Regions



27 Schools of Concern  
needing Interim Options that  
would require board action



- Planning Regions Legend**
- 1 - CENTRAL
  - 2 - NORTH CENTRAL
  - 3 - NORTH WEST
  - 4 - NORTH
  - 5 - FAR EAST
  - 6 - NEAR EAST
  - 7 - SOUTH EAST
  - 8 - SOUTH WEST
  - 9 - WEST SOUTH
  - 10 - WEST NORTH



# Interim Option Recommendations

For Board Feedback Regarding Preferences:

Gain Seats:

- Re-districting for New School Opening – requires board approval
- Add Trailers on Non-program Space

Better Utilizes Seats:

- Consider Non-base Students
- Review Magnet Groupings / Percentage
- Reduce Base (Re-districting) – requires board approval
- Cap – requires board approval

*Convert Calendar & Review Grade Configuration are not recommended at this time*



# Interim Options – An Update

New:  
Projected Membership  
based on 8.25 students  
registered, aged forward.

## INTERIM OPTIONS TO ADDRESS CLASS SIZE CHANGES IN 2018-19

School Name	Projected Member-ship (8.25 Registered Students, aged forward)	School Capacity % Crowding	School Capacity w/ Trailers % Crowding	Short Term Comments
-------------	--	----------------------------	--	---------------------

New:  
4-5 Grades > 29

## INTERIM OPTIONS TO GAIN SEATS

Convert Enhancement to Capacity Classrooms (Art/Music)	4-5 Grades > 29	Re-districting for New School Opening	Add Trailers on Non-program Space
--	-----------------	---------------------------------------	-----------------------------------

Interim options noted in red require board approval

New:  
Combo CRs

## INTERIM OPTIONS TO BETTER UTILIZE SEATS

Consider Non-base Students	Review Magnet Groupings / Percents	Reduce Base (Re-districting)	Combo CRs	Cap
----------------------------	------------------------------------	------------------------------	-----------	-----

# Next Steps - Timeline

- **September 13 Facilities Committee Meeting** - Review recommended interim options for overcrowded schools
- **September 19 BoE work session** – Student Assignment presents Draft 1 of the Redistricting Plan Review proposed capped schools