

DRAFT 2

WCPSS ENROLLMENT PLAN, 2018-19

YEAR FOUR OF A MULTI-YEAR APPROACH TO GROWTH MANAGEMENT

Prepared by: Office of Student Assignment

Board of Education Work Session
October 17, 2017

Draft 2 – Feedback on Draft 1

Discussion/Recommendation

| New Schools: | | Page Draft 2 | Page Draft 1 |
|-------------------------|--|-----------------|-----------------|
| 1. | Bryan Road ES Impacted Multiple ES Base Attendance Areas - Changes to Draft 1 Proposal | 3-5 | 13-16 |
| 2. | Buckhorn Creek ES Impacted Lincoln Heights ES and Willow Springs ES Base Attendance Areas – Changes to Draft 1 Proposal | 6-8 | 17-19 |
| Operational Efficiency: | | | |
| 1. | Adams ES - Increase Base Attendance Area - Draft 1 proposed changes removed from consideration | 9 | 30 |
| 2. | East Cary MS - Increase Base Attendance Area - Draft 1 proposed changes removed from consideration | 10 | 32 |
| 3. | East Cary MS, Lufkin Road MS, and Salem MS – Change Year-Round Application Area Draft 1 proposed changes removed from consideration | 11 | 39 |
| 4. | Overcrowded Schools -Capped Schools Additional capped schools approved by the Board on 10/3/2017 | 12 | 33 |
| Other: | | | |
| 1. | Grandfathering Siblings rules modified | 13-14 | 44- 45 |
| 2. | General Public Information Session, Timeline Meeting Dates Update | 15-16 | 47-48 |

New School – Bryan Road ES (2018-19) – Proposed Additional Changes to Draft 1

- Traditional Calendar
- Year-Round Application School: Timber Drive ES or Banks Road (by catchments)
- Capacity: 662

Discussion:

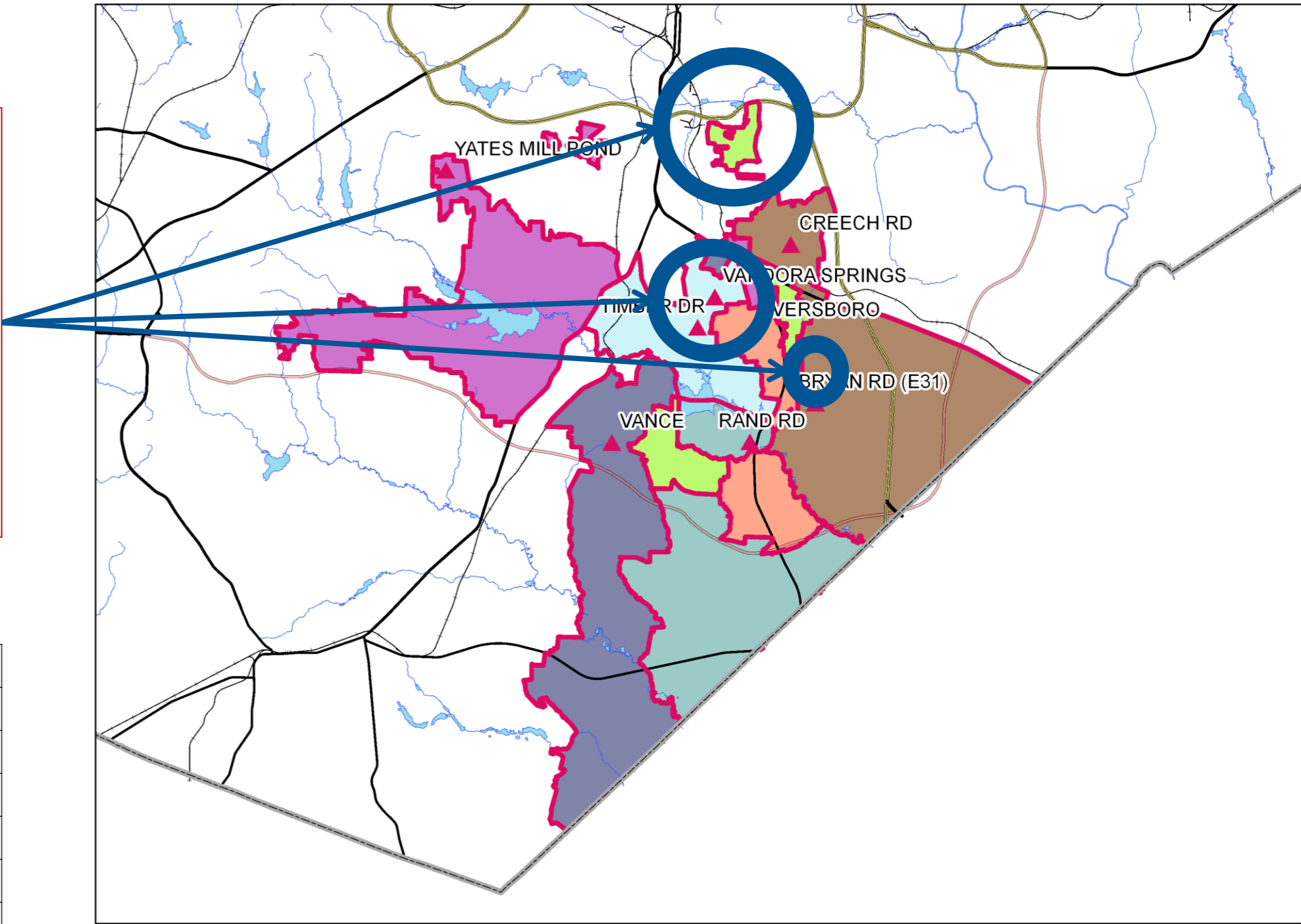
Proposed moves of northern part of Timber Drive ES Base to Rand Road ES Base, and Everwood Subdivision to Bryan Road ES. Proposed stability adjustment near Timber Drive ES location.

- Impacted Schools:

| 2016-17 Base School | Capacity | Capacity w/ Trailers | Calendar | Base % | 2016-17 ADM | 2016-17 Util | 2016-17 Util w/ Trl |
|------------------------|----------|-------------------------|----------|--------|----------------|-----------------|------------------------|
| AVERSBORO ES | 528 | 608 | T | 68% | 580 | 110% | 95% |
| CREECH ROAD ES | 508 | 608 | T | 47% | 590 | 116% | 97% |
| RAND ROAD ES | 454 | 614 | Y4 | 72% | 557 | 123% | 91% |
| TIMBER DRIVE ES | 500 | 680 | Y4 | 56% | 644 | 129% | 95% |
| VANCE ES | 306 | 426 | Y4 | 59% | 486 | 159% | 114% |
| VANDORA SPRINGS ES | 662 | 662 | T | 64% | 540 | 82% | 82% |
| YATES MILL POND ES | 508 | 508 | T | 56% | 614 | 121% | 121% |
| | 3466 | 4106 | | | 4011 | 116% | 98% |

- Utilization based on 2018-19 Capacity and 2016-17 Month-2 Average Daily Membership (ADM)
- Y – Year-Round Calendar, All Tracks (1-4)
- Y4 – Year-Round Calendar, Track 4 Only
- T – Traditional Calendar
- Base % = Percentage of WCPSS students within base attending the base school

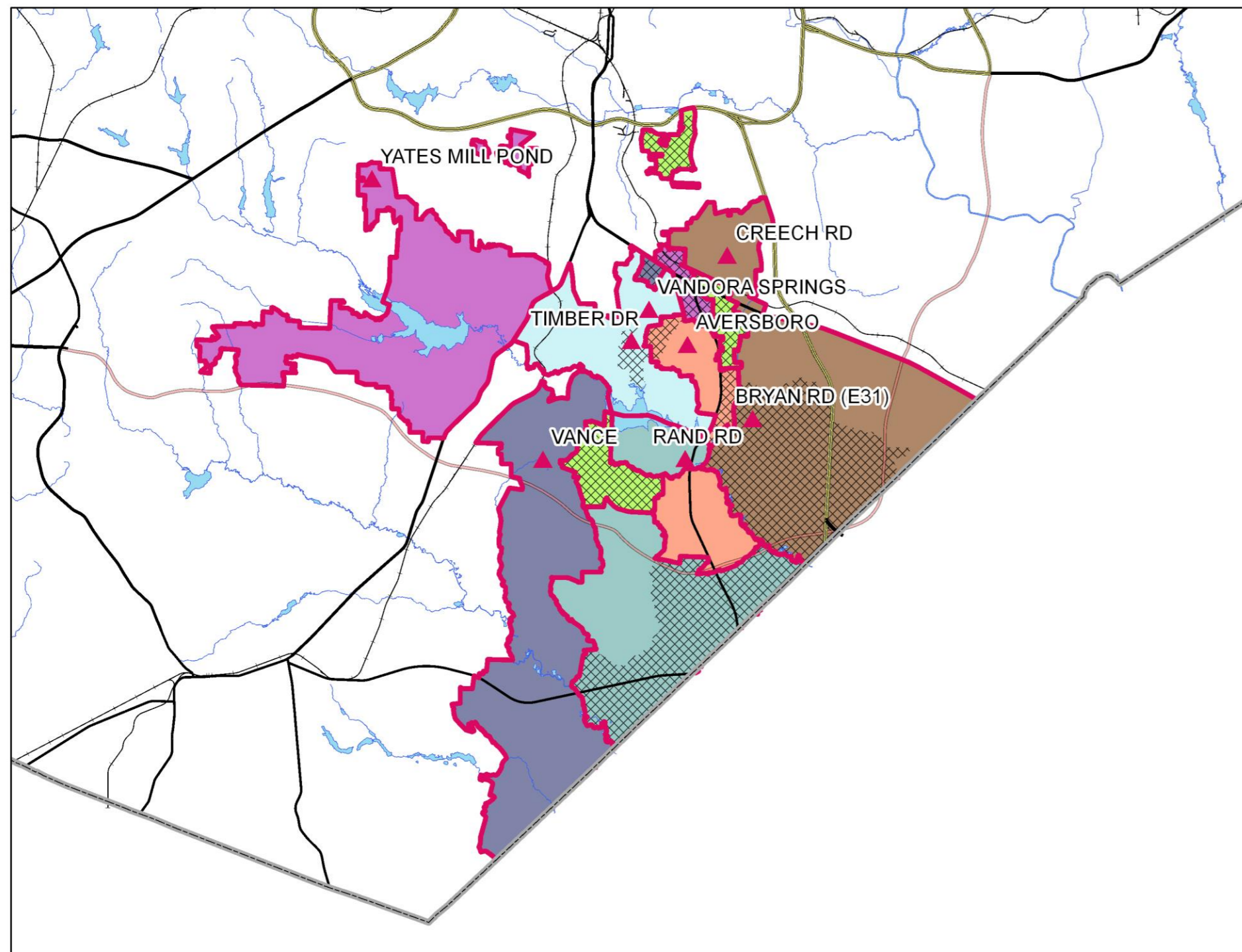
2017-18 Base Areas



RED = 2017-18 ES Base Boundary

New School – Bryan Road ES (2018-19) – Proposed Additional Changes to Draft 1

Impacted Areas

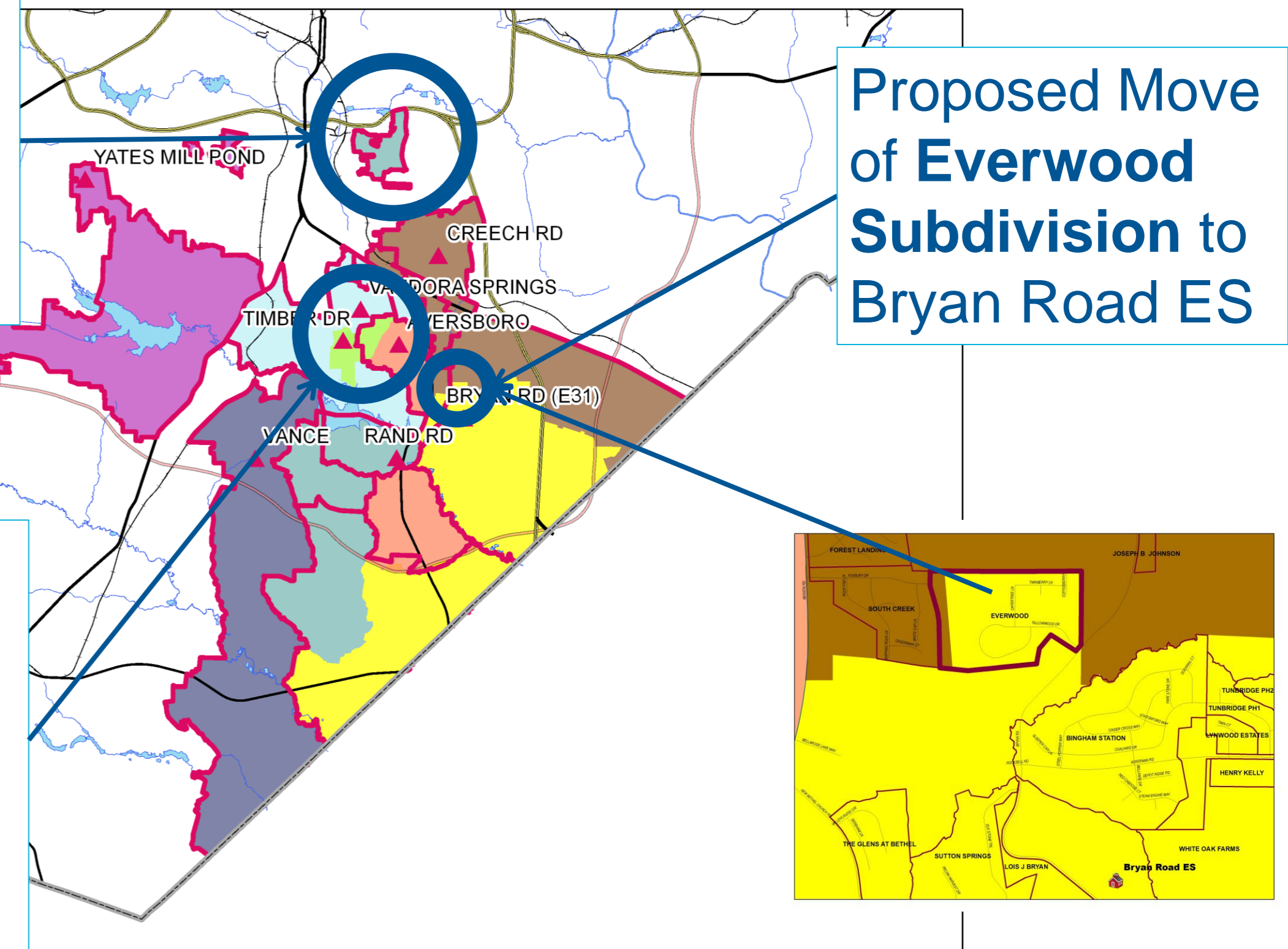


Proposed 2018-19 Base Areas

Proposed Move From **Timber Drive ES** to Rand Road ES

Proposed Move of **Everwood Subdivision** to Bryan Road ES

Proposed Stability Adjustments near **Timber Drive ES** location



RED = 2017-18 ES Base Boundary

New School – Bryan Road ES (2018-19) - Proposed Additional Changes to Draft 1

| 2016-17 Base School | Capacity | Capacity w/ Trailers | 2018-19 Util | 2018-19 Util w/ Trl | 2020-21 Util | 2020-21 Util w/ Trl | Res | Academic Proficiency (Grades 3-5) | | | Actual |
|------------------------|----------|-------------------------|-----------------|------------------------|-----------------|------------------------|-----|-----------------------------------|----------|-----|--------|
| | | | | | | | | Base | Non-Base | Agg | |
| AVERSBORO ES | 528 | 608 | 111% | 97% | 115% | 100% | 62% | 57% | 51% | 54% | 54% |
| CREECH ROAD ES | 508 | 608 | 143% | 119% | 162% | 136% | 51% | 39% | 39% | 39% | 38% |
| RAND ROAD ES | 454 | 614 | 136% | 100% | 142% | 105% | 65% | 67% | 71% | 68% | 70% |
| TIMBER DRIVE ES | 500 | 680 | 131% | 96% | 134% | 99% | 41% | 36% | 59% | 49% | 49% |
| VANCE ES | 306 | 426 | 178% | 128% | 194% | 139% | 65% | 61% | 50% | 59% | 59% |
| VANDORA SPRINGS ES | 662 | 662 | 85% | 85% | 87% | 87% | 53% | 51% | 43% | 47% | 47% |
| YATES MILL POND ES | 508 | 508 | 123% | 123% | 122% | 122% | 66% | 58% | 62% | 59% | 58% |
| BRYAN ROAD ES (E31) | | | | | | | | | | | |
| | 3466 | 4106 | 125% | 105% | 131% | 111% | | | | | |

| 2018-19 Base School | Capacity | Capacity w/ Trailers | 2018-19 Util | 2018-19 Util w/ Trl | 2020-21 Util | 2020-21 Util w/ Trl | Res | Academic Proficiency (Grades 3-5) | | |
|------------------------|----------|-------------------------|-----------------|------------------------|-----------------|------------------------|-----|-----------------------------------|----------|-----|
| | | | | | | | | Base | Non-Base | Agg |
| AVERSBORO ES | 528 | 608 | 97% | 84% | 101% | 88% | 65% | 60% | 51% | 55% |
| CREECH ROAD ES | 508 | 608 | 131% | 110% | 144% | 120% | 43% | 39% | 39% | 39% |
| RAND ROAD ES | 454 | 614 | 134% | 99% | 137% | 101% | 54% | 53% | 71% | 59% |
| TIMBER DRIVE ES | 500 | 680 | 98% | 72% | 97% | 71% | 59% | 53% | 59% | 58% |
| VANCE ES | 306 | 426 | 169% | 121% | 185% | 133% | 68% | 64% | 50% | 62% |
| VANDORA SPRINGS ES | 662 | 662 | 94% | 94% | 96% | 96% | 50% | 47% | 43% | 45% |
| YATES MILL POND ES | 508 | 508 | 116% | 116% | 114% | 114% | 67% | 58% | 62% | 59% |
| BRYAN ROAD ES (E31) | 662 | 662 | 64% | 64% | 76% | 76% | 61% | 55% | n/a | n/a |
| | 4128 | | 107% | 93% | 113% | 98% | | | | |

Recommendation: Change northern part of Timber Drive ES Base to Rand Road ES Base, move Everwood Subdivision to Bryan Road ES Base, and make stability adjustment near Timber Drive ES location.

PROFICIENCY LEGEND:

Res = Mean proficiency of students residing in base

Base = Mean proficiency of base students in base

Non-Base = Mean proficiency of non-base students

Agg = Aggregate mean proficiency of base and non-base students

Actual = Reading/English proficiency by school

New School – Buckhorn Creek ES (2018-19) – Proposed Additional Changes to Draft 1

- Traditional Calendar
- Year-Round Application School: Herbert Akins Rd ES / Holly Grove ES (by catchments)
- Capacity: 662

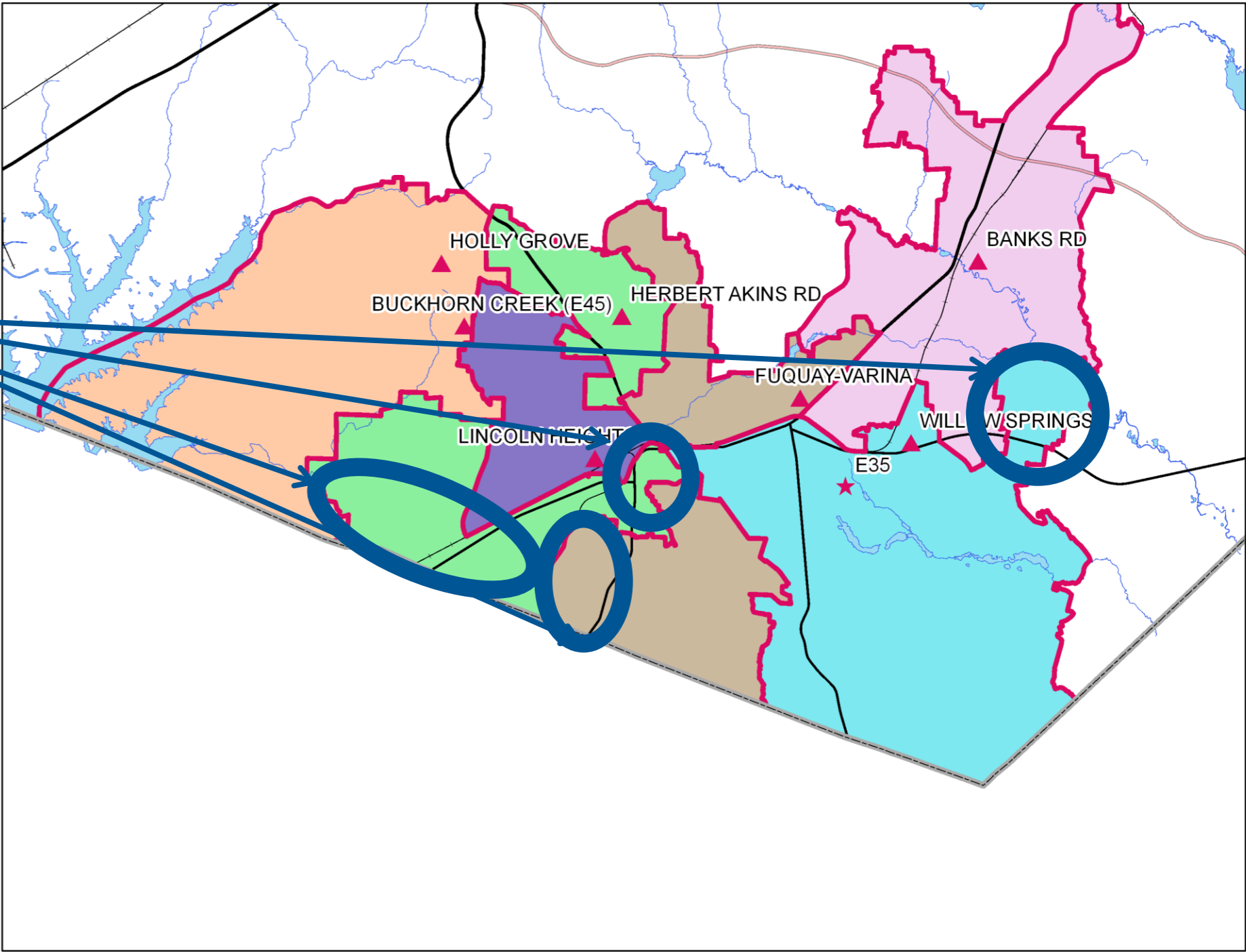
Discussion:
Change to Draft 1 Proposed Lincoln Heights ES Base Area, and move of portion of Willow Springs ES Base to Banks Road ES.

- Impacted Schools:

| 2016-17 Base School | Capacity | Capacity w/ Trailers | Calendar | Base % | 2016-17 ADM | 2016-17 Util | 2016-17 Util w/ Trl |
|------------------------|----------|-------------------------|----------|--------|----------------|-----------------|------------------------|
| HERBERT AKINS RD ES | 1032 | 1032 | Y | 70% | 1044 | 101% | 101% |
| FUQUAY-VARINA ES | 506 | 806 | T | 64% | 832 | 164% | 103% |
| HOLLY GROVE ES | 902 | 962 | Y | 85% | 1143 | 127% | 119% |
| LINCOLN HEIGHTS ES | 528 | 528 | T | 39% | 462 | 88% | 88% |
| WILLOW SPRINGS ES | 515 | 835 | Y | 78% | 1070 | 208% | 128% |
| | 3483 | 4163 | | | 4551 | 131% | 109% |

- Utilization based on 2018-19 Capacity and 2016-17 Month-2 Average Daily Membership (ADM)
- Y – Year-Round Calendar, All Tracks (1-4)
- Y4 – Year-Round Calendar, Track 4 Only
- T – Traditional Calendar
- Base % = Percentage of WCPSS students within base attending the base school

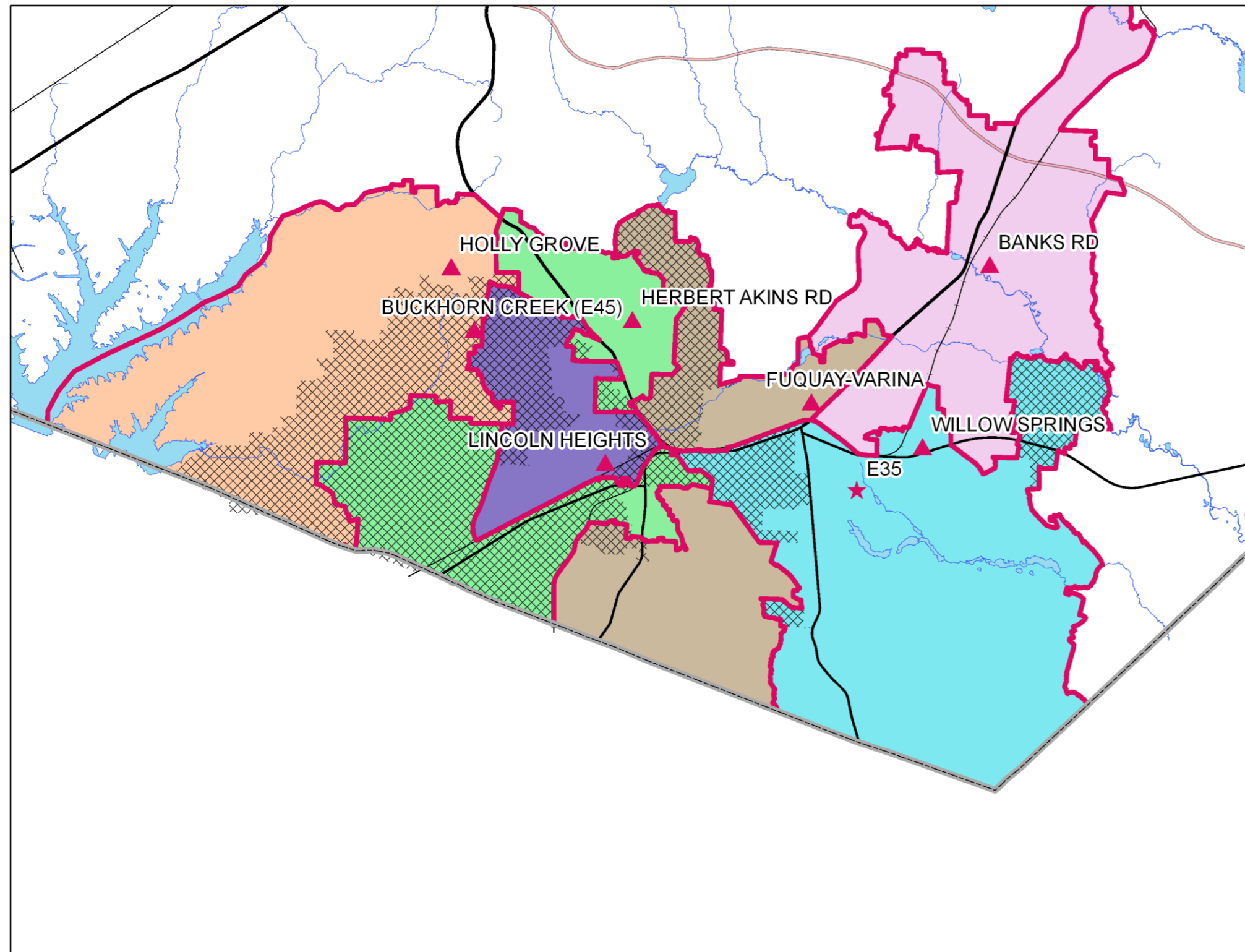
2017-18 Base Areas



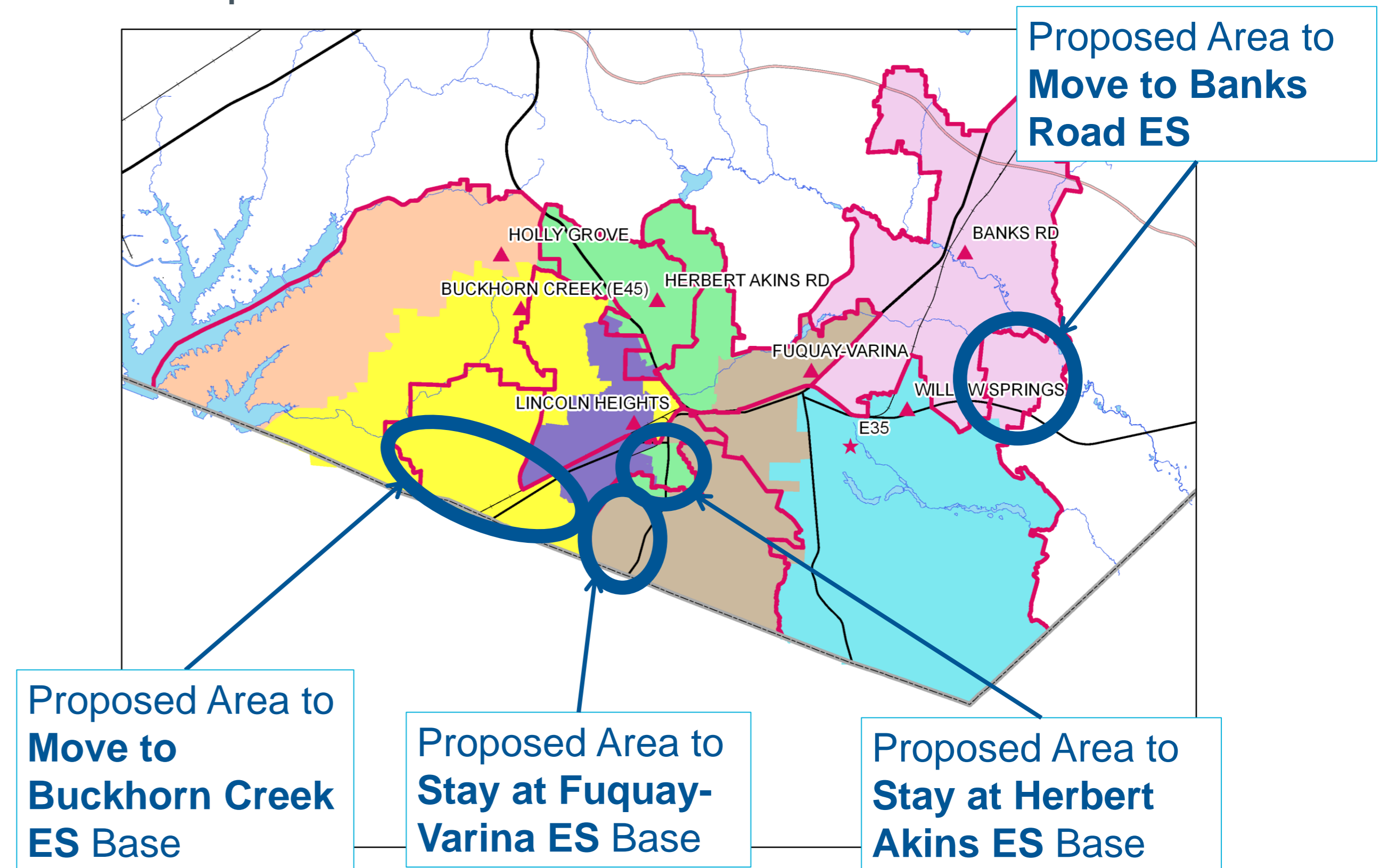
RED = 2017-18 ES Base Boundary

Draft 2 – Discussion/Recommendation New School – Buckhorn Creek ES (2018-19) – Proposed Additional Changes to Draft 1

Impacted Areas



Proposed 2018-19 Base Areas



Changed Area

RED = 2017-18 ES Base Boundary

New School – Buckhorn Creek ES (2018-19) – Proposed Additional Changes to Draft 1

| 2016-17 Base School | Capacity | Capacity w/ Trailers | 2018-19 Util | 2018-19 Util w/ Trl | 2020-21 Util | 2020-21 Util w/ Trl | Res | Academic Proficiency (Grades 3-5) | | | Actual |
|-------------------------|-------------|-------------------------|-----------------|------------------------|-----------------|------------------------|-----|-----------------------------------|----------|-----|--------|
| | | | | | | | | Base | Non-Base | Agg | |
| HERBERT AKINS RD ES | 1032 | 1032 | 111% | 111% | 122% | 122% | 69% | 69% | 78% | 72% | 73% |
| BANKS ROAD ES | 980 | 980 | 82% | 82% | 92% | 92% | 64% | 68% | 77% | 70% | 70% |
| FUQUAY-VARINA ES | 506 | 806 | 184% | 115% | 193% | 121% | 66% | 61% | 68% | 63% | 64% |
| HOLLY GROVE ES | 902 | 962 | 147% | 138% | 162% | 152% | 83% | 84% | 85% | 84% | 85% |
| LINCOLN HEIGHTS ES | 528 | 528 | 96% | 96% | 102% | 102% | 61% | 36% | 36% | 36% | 37% |
| WILLOW SPRINGS ES | 515 | 835 | 235% | 145% | 254% | 156% | 75% | 80% | 86% | 81% | 82% |
| BUCKHORN CREEK ES (E45) | | | | | | | | | | | |
| | 4463 | 5143 | 133% | 115% | 144% | 125% | | | | | |

| 2018-19 Base School | Capacity | Capacity w/ Trailers | 2018-19 Util | 2018-19 Util w/ Trl | 2020-21 Util | 2020-21 Util w/ Trl | Res | Academic Proficiency (Grades 3-5) | | | |
|-------------------------|-------------|-------------------------|-----------------|------------------------|-----------------|------------------------|-----|-----------------------------------|----------|-----|--|
| | | | | | | | | Base | Non-Base | Agg | |
| HERBERT AKINS RD ES | 1032 | 1032 | 109% | 109% | 121% | 121% | 69% | 66% | 78% | 71% | |
| BANKS ROAD ES | 980 | 980 | 93% | 93% | 103% | 103% | 66% | 69% | 77% | 71% | |
| FUQUAY-VARINA ES | 506 | 806 | 168% | 105% | 168% | 106% | 71% | 68% | 68% | 68% | |
| HOLLY GROVE ES | 902 | 962 | 120% | 113% | 132% | 123% | 82% | 84% | 85% | 84% | |
| LINCOLN HEIGHTS ES | 528 | 528 | 135% | 135% | 143% | 143% | 65% | 66% | 36% | 50% | |
| WILLOW SPRINGS ES | 515 | 835 | 184% | 114% | 206% | 127% | 74% | 79% | 86% | 81% | |
| BUCKHORN CREEK ES (E45) | 662 | 662 | 81% | n/a | 89% | n/a | 70% | 67% | n/a | n/a | |
| | 5125 | 5805 | 120% | 106% | 131% | 115% | | | | | |

Recommendation: Change Proposed Draft 1 areas of Lincoln Heights ES Base Area to Buckhorn Creek ES, Herbert Akins ES and Fuquay-Varina ES Base Areas. Move portion of Willow Springs ES to Banks Road ES.

PROFICIENCY LEGEND:

Res = Mean proficiency of students residing in base

Base = Mean proficiency of base students in base

Non-Base = Mean proficiency of non-base students

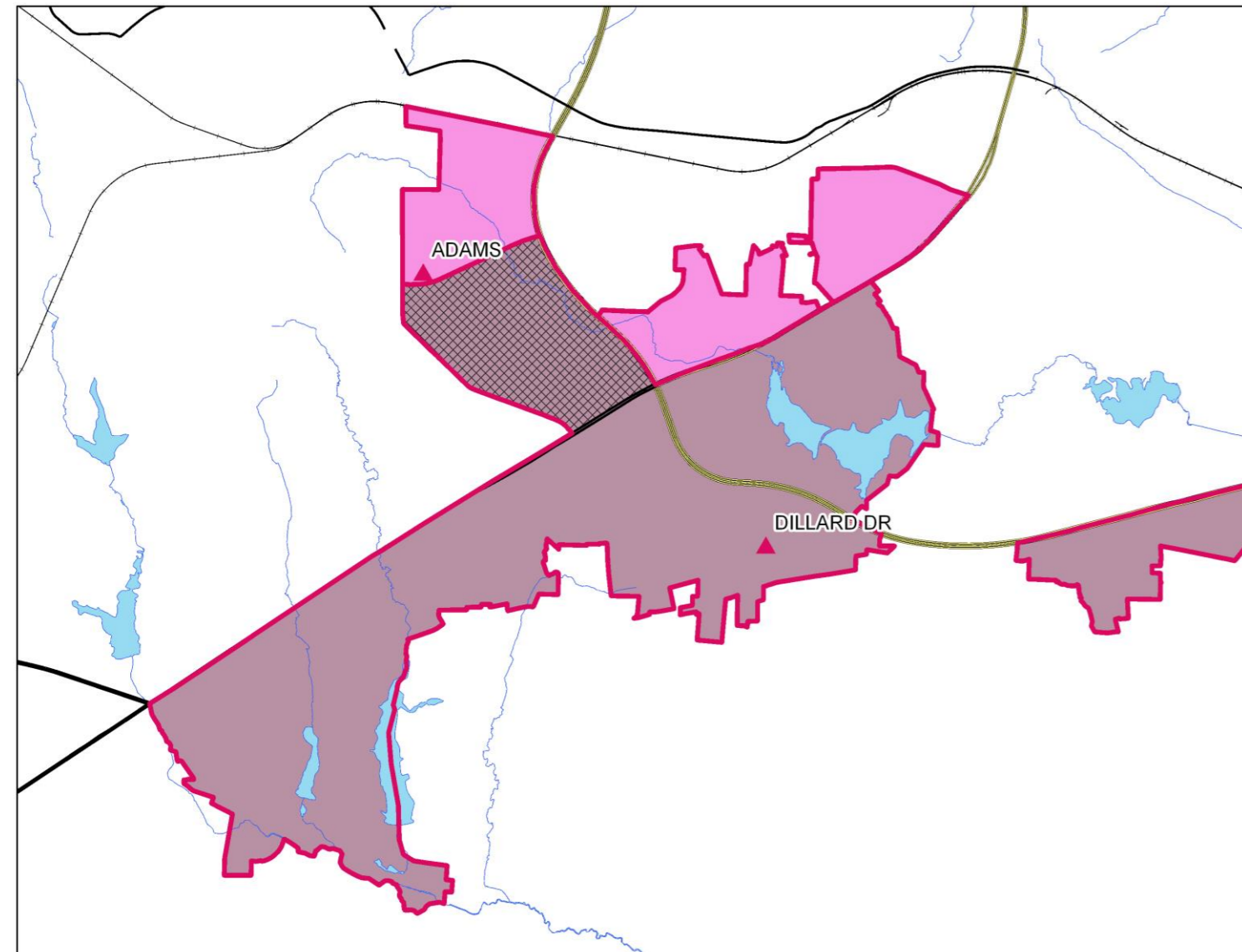
Agg = Aggregate mean proficiency of base and non-base students

Actual = Reading/English proficiency by school

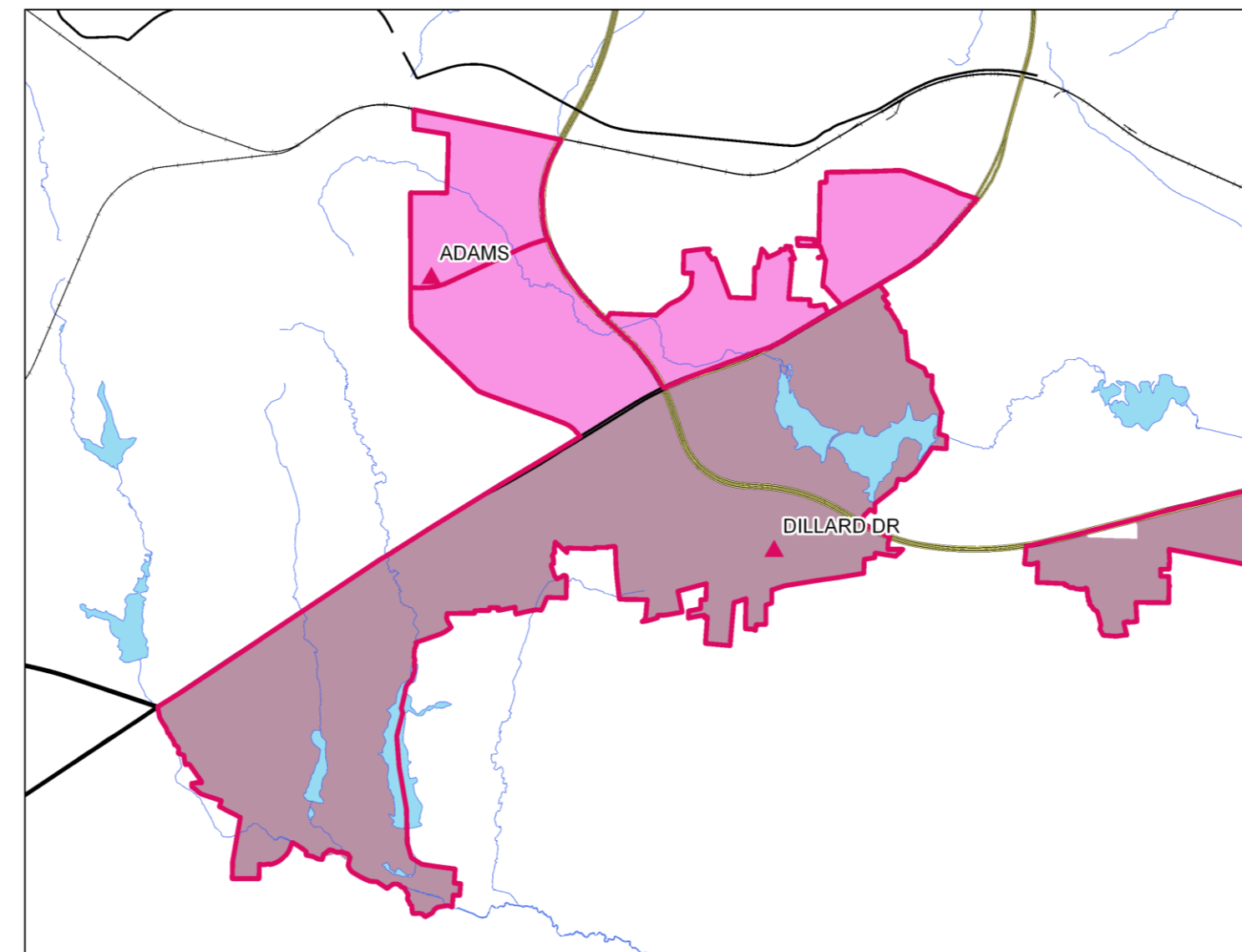
Operational Efficiency

a) Increase Base Attendance Area – Adams ES

Impacted Areas



Proposed 2018-19 Base Areas



Recommendation:
Remove proposed increase of Adams ES Base Attendance Area from the Plan.

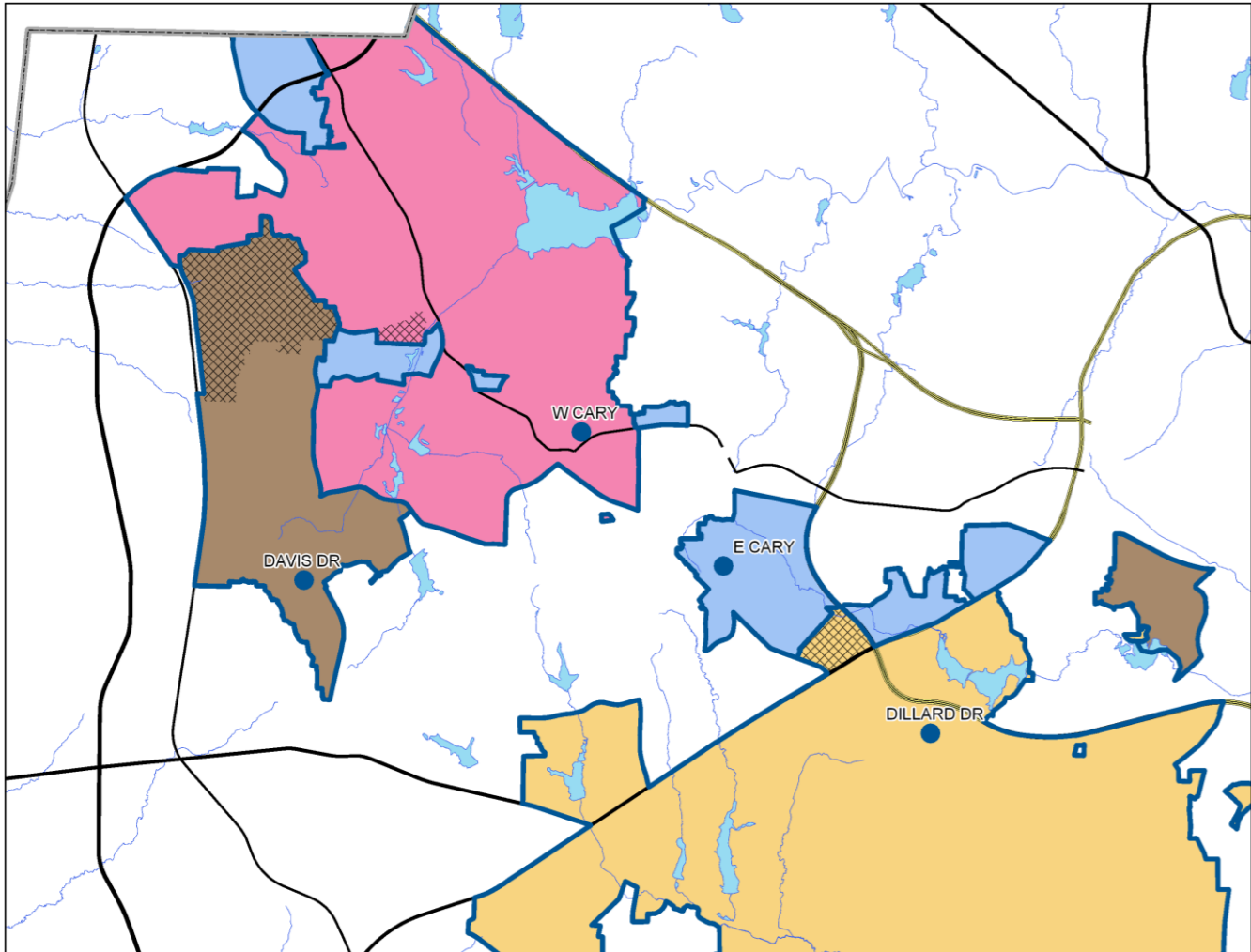
| 2016-17 Base School | Capacity | Capacity w/ Trailers | 2018-19 Util | 2018-19 Util w/ Trl | 2020-21 Util | 2020-21 Util w/ Trl | Academic Proficiency (Grades 3-5) | | | | |
|------------------------|----------|-------------------------|-----------------|------------------------|-----------------|------------------------|-----------------------------------|------|----------|-----|--------|
| | | | | | | | Res | Base | Non-Base | Agg | Actual |
| ADAMS ES | 477 | 637 | 144% | 108% | 143% | 107% | 43% | 37% | 74% | 64% | 64% |
| DILLARD DRIVE ES | 481 | 681 | 144% | 101% | 139% | 98% | 65% | 53% | 59% | 55% | 55% |
| | 958 | 1318 | 144% | 105% | 141% | 103% | | | | | |

| 2018-19 Base School | Capacity | Capacity w/ Trailers | 2018-19 Util | 2018-19 Util w/ Trl | 2020-21 Util | 2020-21 Util w/ Trl | Academic Proficiency (Grades 3-5) | | | | |
|------------------------|----------|-------------------------|-----------------|------------------------|-----------------|------------------------|-----------------------------------|------|----------|-----|--|
| | | | | | | | Res | Base | Non-Base | Agg | |
| ADAMS ES | 477 | 637 | 185% | 139% | 183% | 137% | 50% | 43% | 74% | 62% | |
| DILLARD DRIVE ES | 481 | 681 | 113% | 80% | 110% | 78% | 66% | 54% | 59% | 56% | |
| | 958 | 1318 | 149% | 108% | 146% | 106% | | | | | |

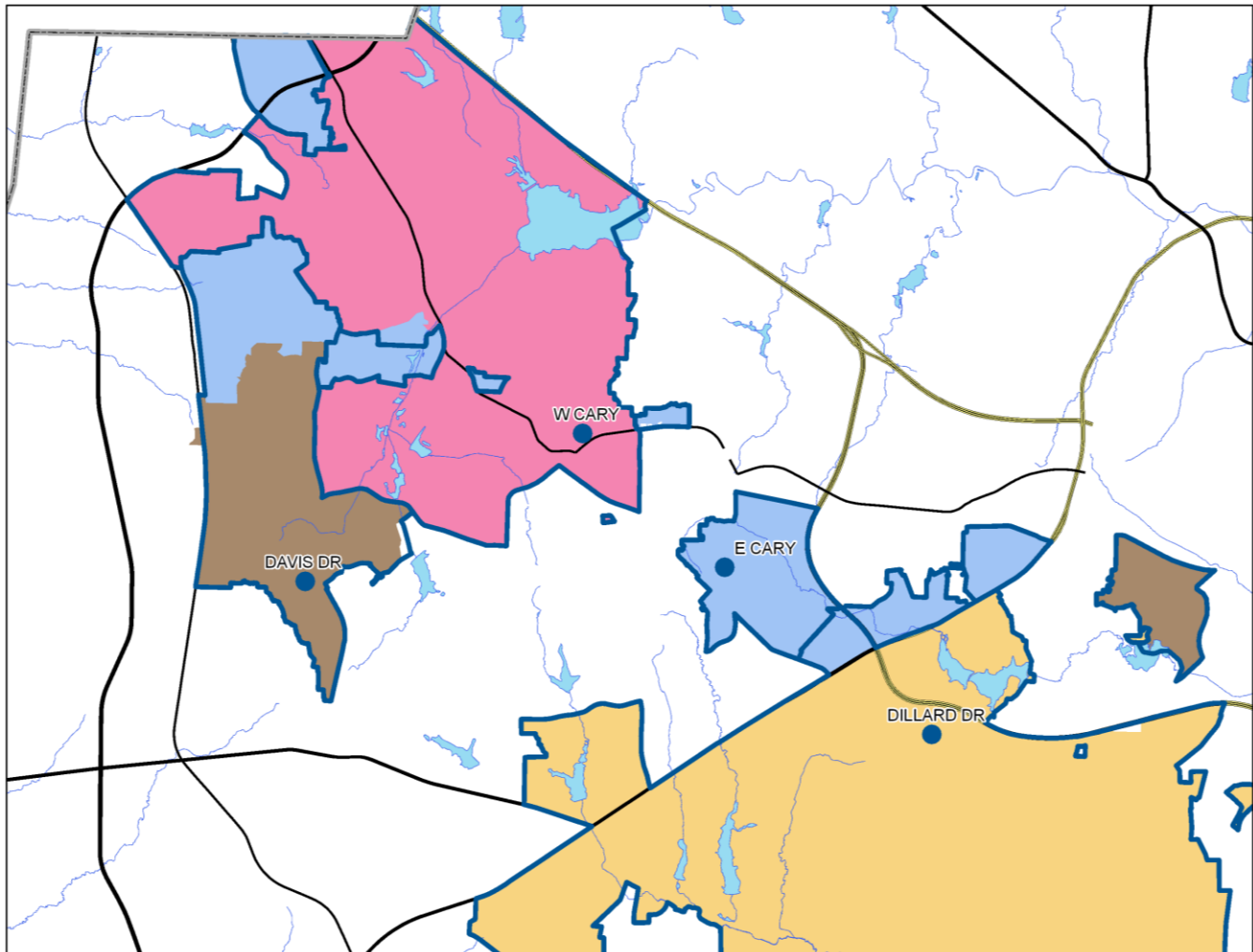
Operational Efficiency

a) Increase Base Attendance Area (cont.) – East Cary MS

Impacted Areas



Proposed 2018-19 Base Areas

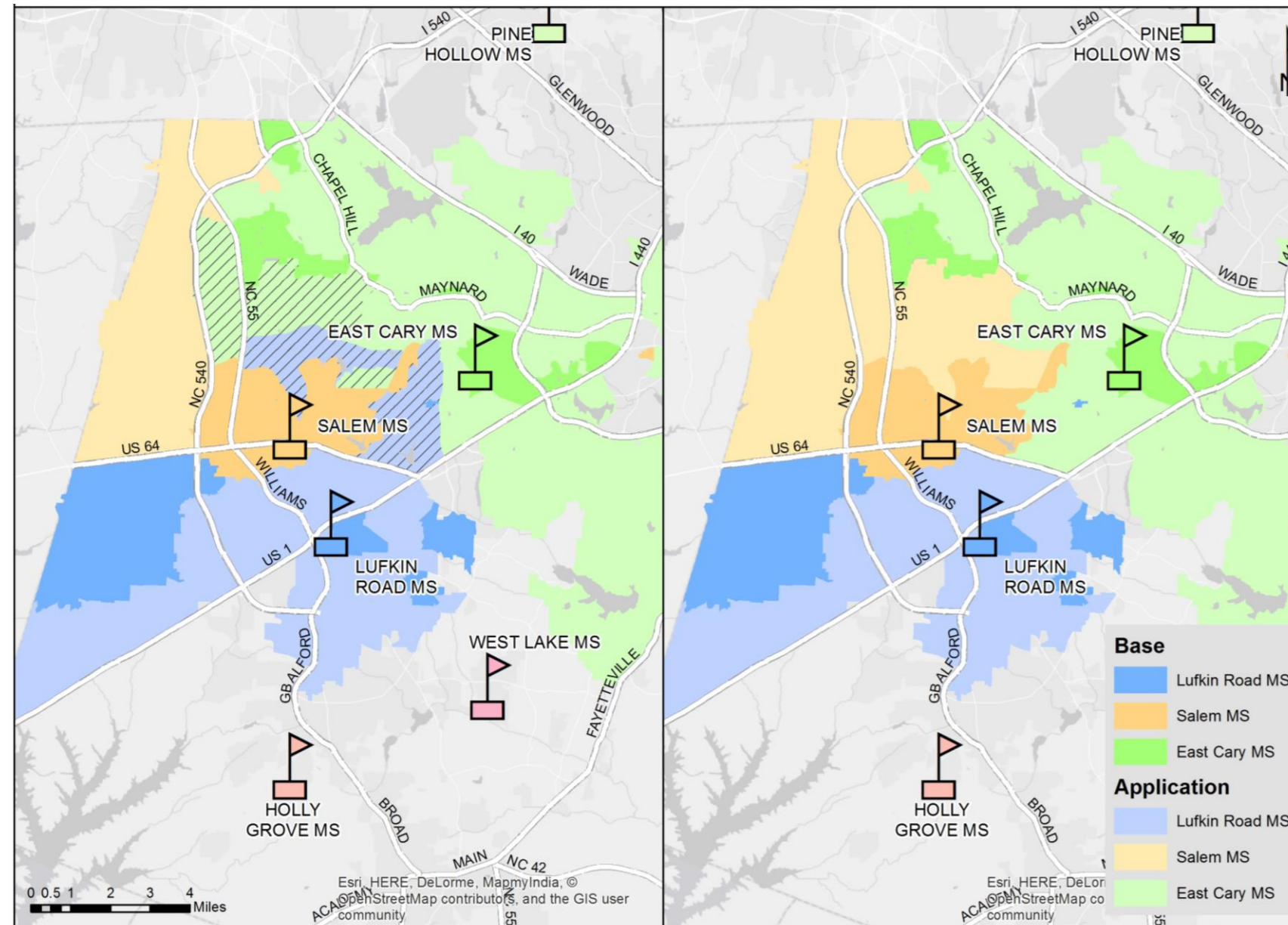


Recommendation:
Remove proposed increase of East Cary MS Base Attendance Area from the Plan.

| 2016-17 | | | | | | | Academic Proficiency (Grades 6-8) | | | | |
|------------------|----------|----------------------|--------------|---------------------|--------------|---------------------|-----------------------------------|------|----------|-----|--------|
| Base School | Capacity | Capacity w/ Trailers | 2018-19 Util | 2018-19 Util w/ Trl | 2020-21 Util | 2020-21 Util w/ Trl | Res | Base | Non-Base | Agg | Actual |
| DAVIS DRIVE MS | 944 | 1230 | 130% | 99% | 114% | 87% | 87% | 87% | 81% | 87% | 87% |
| DILLARD DRIVE MS | 1126 | 1282 | 102% | 89% | 102% | 90% | 71% | 60% | 54% | 58% | 58% |
| EAST CARY MS | 1290 | 1290 | 81% | 81% | 81% | 81% | 63% | 61% | 82% | 74% | 74% |
| WEST CARY MS | 952 | 1108 | 99% | 85% | 105% | 90% | 79% | 72% | 70% | 72% | 72% |
| | 4312 | 4910 | 101% | 89% | 99% | 87% | | | | | |

| 2018-19 | | | | | | | Academic Proficiency (Grades 6-8) | | | |
|------------------|----------|----------------------|--------------|---------------------|--------------|---------------------|-----------------------------------|------|----------|-----|
| Base School | Capacity | Capacity w/ Trailers | 2018-19 Util | 2018-19 Util w/ Trl | 2020-21 Util | 2020-21 Util w/ Trl | Res | Base | Non-Base | Agg |
| DAVIS DRIVE MS | 944 | 1230 | 101% | 77% | 90% | 69% | 86% | 86% | 81% | 86% |
| DILLARD DRIVE MS | 1126 | 1282 | 96% | 84% | 97% | 85% | 72% | 61% | 54% | 59% |
| EAST CARY MS | 1290 | 1290 | 112% | 112% | 110% | 110% | 72% | 73% | 82% | 77% |
| WEST CARY MS | 952 | 1108 | 99% | 85% | 104% | 90% | 79% | 72% | 70% | 72% |
| | 4312 | 4910 | 102% | 90% | 101% | 88% | | | | |

c) Proposed Changes in Year-Round Application Area for East Cary, Lufkin Road, and Salem MS (2018-2019)



Recommendation:
Remove proposed increase of East Cary MS Base Attendance Area from the Plan.

Current
2017-2018
Base and
Application
Areas

Proposed
2018-2019
Base and
Application
Areas

| Elementary Schools |
|--------------------|
| Baileywick Rd ES |
| Carpenter ES |
| Combs ES |
| Harris Creek ES |
| Olive Chapel ES |
| Sycamore Creek ES |
| Vance ES |
| Willow Springs ES |

List of Additional Capped Schools in 2017-18 (8 schools)
Approved by the Board of Education on 10/3/2017,
due to K - 3 Class Size Legislation

Overcrowded Schools: Existing Capped Schools in 2017-18 (10 schools)

| Elementary Schools | Middle Schools | High Schools |
|--------------------|----------------|------------------|
| Cedar Fork ES | Apex MS | Enloe HS |
| Fuquay-Varina ES | Mills Park MS | Fuquay-Varina HS |
| Holly Grove ES | | Heritage HS |
| Mills Park ES | | Panther Creek HS |

These capped school base attendance areas will be impacted by new school openings in 2018-19.

These capped school base attendance areas will be impacted by new school openings in 2019-20.

Elementary School and Middle School Students

- To utilize new school capacity and meet State mandated class-size reduction for grades K-3:
 - Elementary school and middle school students who experience an assignment change as a result of this enrollment proposal, and are rising into **grades 5 and 8**, are eligible to request a **transfer** to “grandfather” at their current assignment. These requests will be approved.
 - Grandfather requests can be made through the School Transfer process and grandfathered students will **not receive district transportation**.
 - **Siblings of eligible grandfathered students will be eligible to grandfather for one (1) year only with their rising 5th grade, or 8th grade sibling.**

High School Students

- Students who experience an assignment change as a result of this proposal:
 - From **an existing school to an existing school**, all current students in 9, 10, and 11 grades are eligible to request a **transfer** to “grandfather” at their current assignment. These requests will be approved.
 - Students who request to grandfather are **transfer** students and **no transportation will be provided**.
 - **Siblings of “grandfathered” students are eligible to grandfather.**
 - From **existing school to a new school** (for students rising into grades 11 and 12 grades only) are eligible to request a **transfer** to “grandfather” at their current assignment. These requests will be approved.
 - Students who request to grandfather are **transfer** students and **no transportation will be provided**.
 - **Siblings of “grandfathered” students are eligible to grandfather.**

Community Feedback

- We notified parents at potentially impacted schools about the upcoming discussion.
- An online feedback forum will launch on September 19, 2017 after the board presentation.
- We will host information sessions at the following BAC meetings:
 - District 1 - September 25, 2017
 - District 2 - **October 11**, 2017
 - District 5 - September 28, 2017
 - District 6 - September 22, 2017
 - District 7 - October 11, 2017
 - District 8 - October 2, 2017
- We will host general public information sessions on
 - **October 6, 2017** - Holly Grove MS, and
 - October 9, 2017 - South Garner HS.
- More information, including links to the address look-up tool and the online feedback site, can be found at wcpss.net/enrollmentproposal



***Changes since Draft 1**

Timeline of the Enrollment Process

| DATES | ACTIONS |
|------------------------|--|
| May 16, 2017 | BoE Work Session – review/discuss needs for 2018-19 Enrollment plan, seek board input on direction |
| September 19, 2017 | BoE Work Session – staff presents Draft 1 of the 2018-19 enrollment plan; begin feedback process through online forums |
| September/October 2017 | BoE Advisory Committee Meetings – staff presents Draft 1; solicits feedback: District 1 - September 25, District 2 - October 11 , District 5 - September 28, District 6 - September 22, District 7 - October 11, District 8 - October 2 General Public Information Sessions on: October 6 - Holly Grove MS, and October 9 - South Garner HS |
| October 17, 2017 | BoE Work Session – staff presents Draft 2 of the enrollment plan; continue to solicit feedback through online forums |
| November, 2017 | Public Hearing |
| | BoE Work Session |
| | BoE approval of the 2018-19 Enrollment Plan |

***Changes since Draft 1**