



Middle Creek Transportation Facility

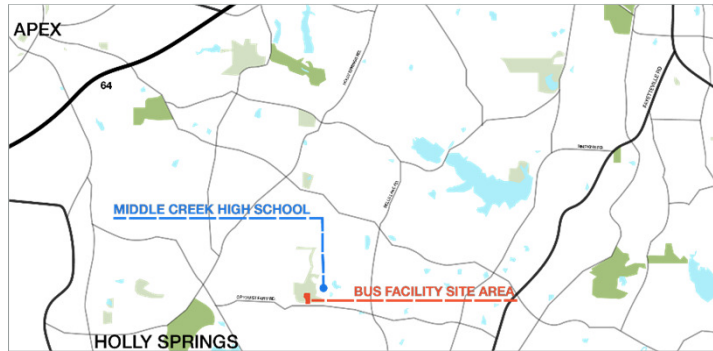
SCHEMATIC DESIGN – Board of Education Facilities Committee Meeting

David Neter, Chief Operating Officer

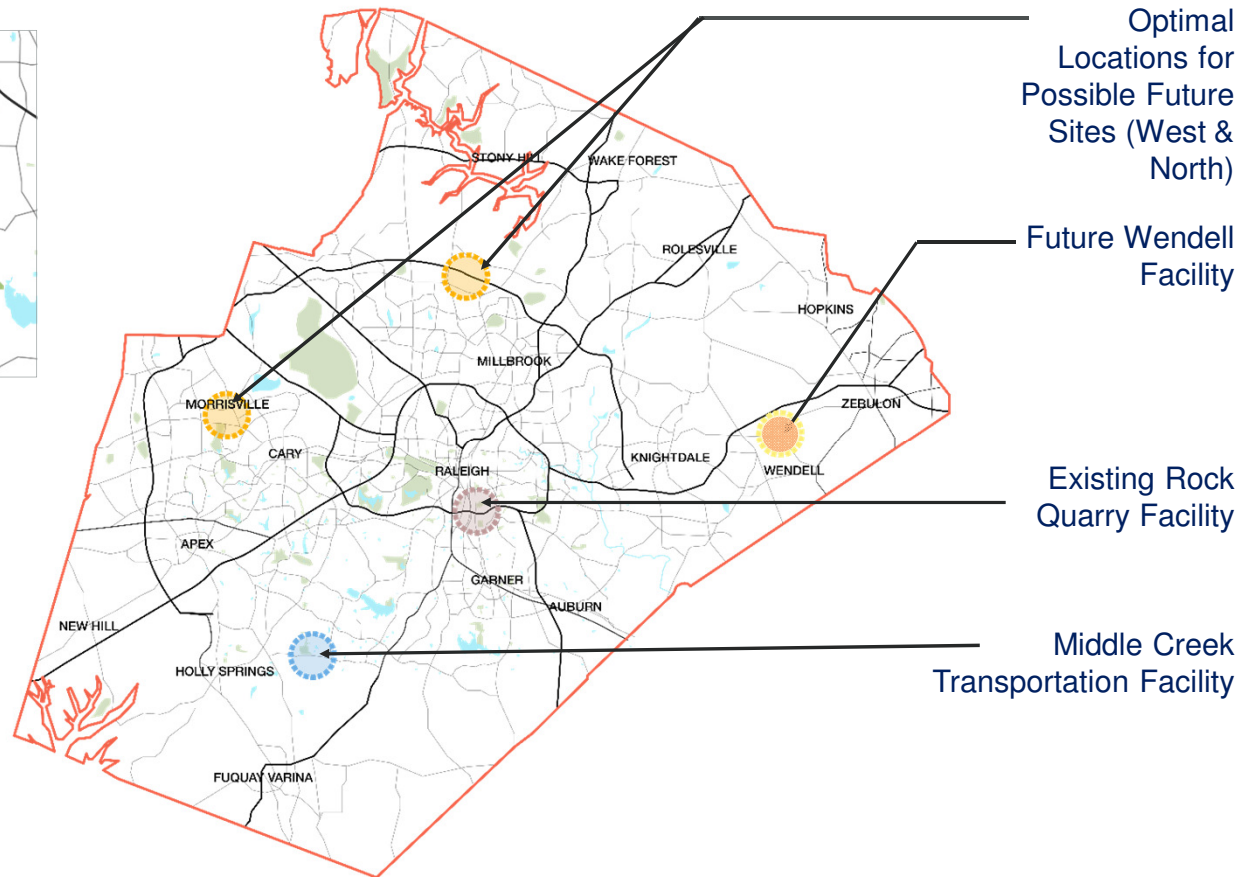
Ola Ferm, IBI Group, Design Consultant

April 18, 2018

MIDDLE CREEK TRANSPORTATION FACILITY: BUS MAINTENANCE STRATEGIC PLAN, REGIONALIZATION



Mechanics working outside in school parking lots.



MIDDLE CREEK TRANSPORTATION FACILITY: AERIAL SITE VIEW



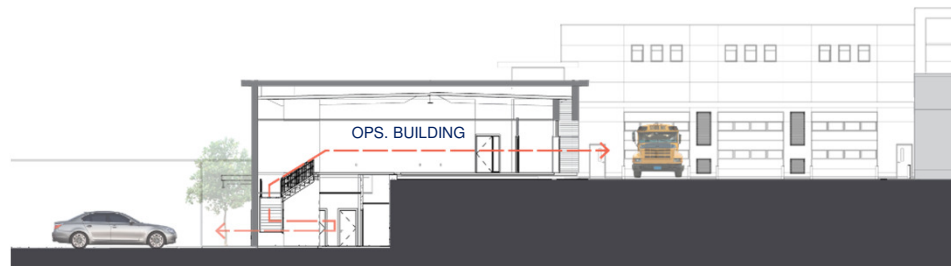
MIDDLE CREEK TRANSPORTATION FACILITY: SCHEMATIC DESIGN

- Site: 23.75 Acres
- Maintenance Building:
 - 60,000 SF
 - 22 Bays with repair support spaces
- Operations Support Building:
 - 19,000 SF
- Fuel and Wash
- Parking for 262 Buses (6 Districts)
 - 224 Main Area
 - 38 Down and Ready
- 300 Space Staff Vehicle Parking

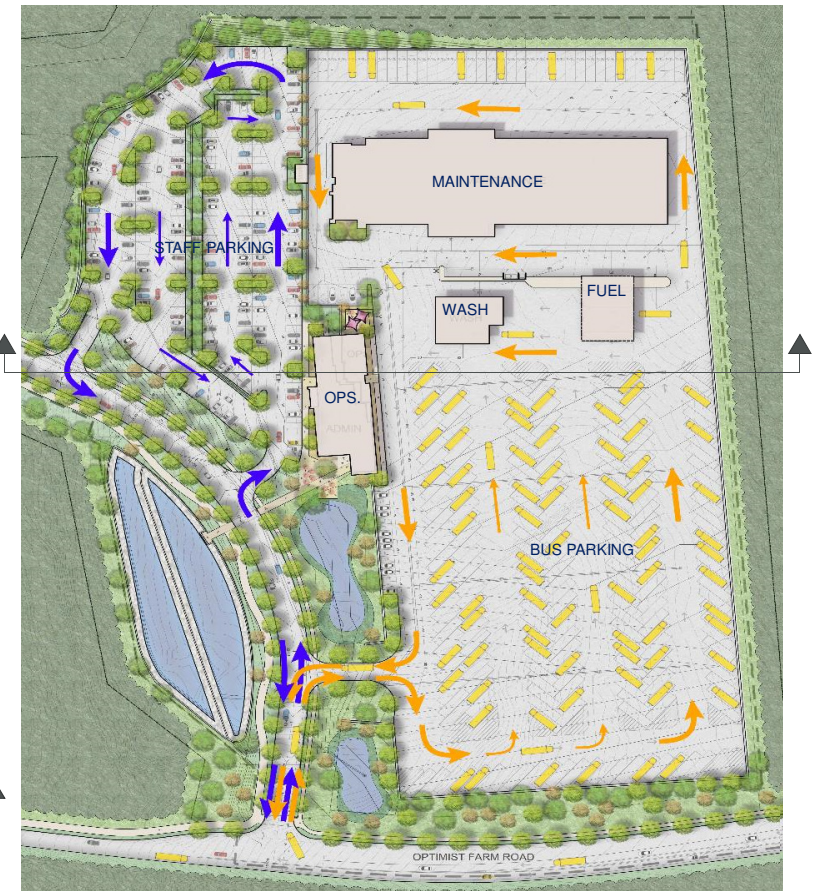


MIDDLE CREEK TRANSPORTATION FACILITY: SITE CIRCULATION

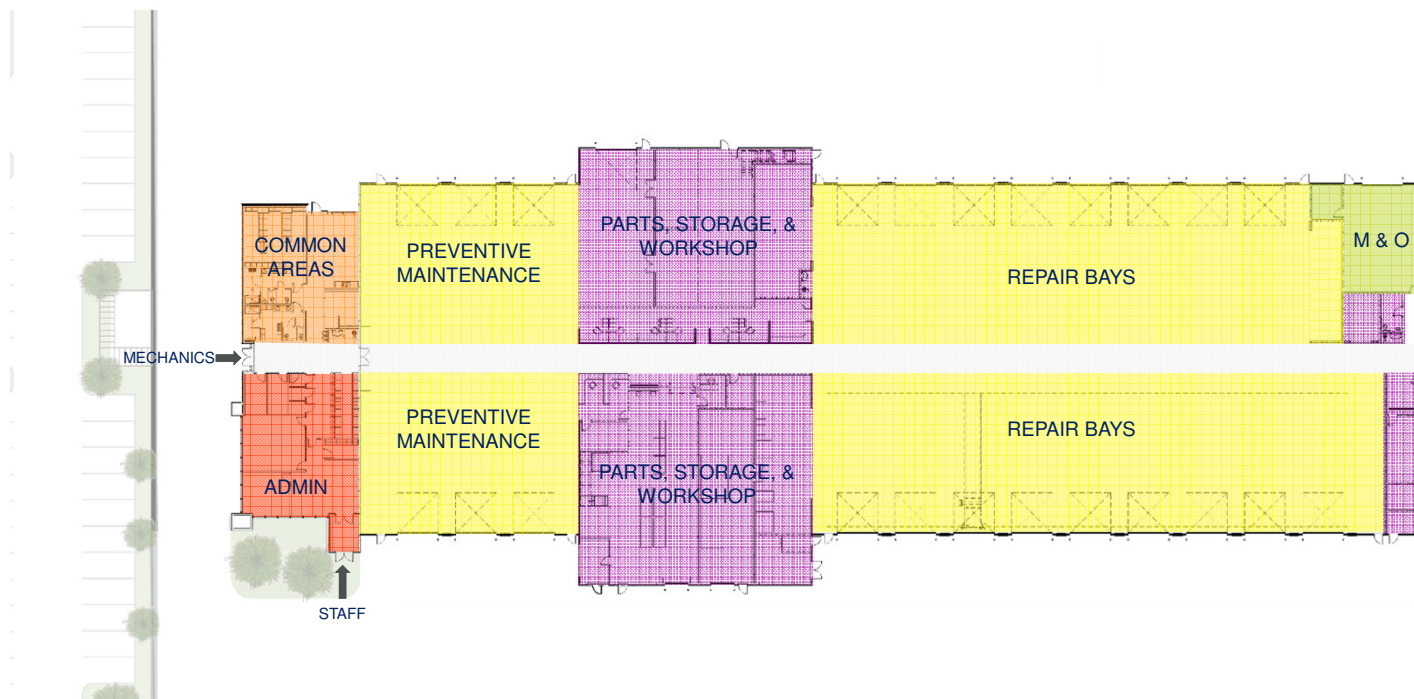
- Site Circulation
- Driver Circulation Through Ops. & Admin Building



Operations building accommodates major site grade change



MIDDLE CREEK TRANSPORTATION FACILITY: MAINTENANCE FLOOR PLAN

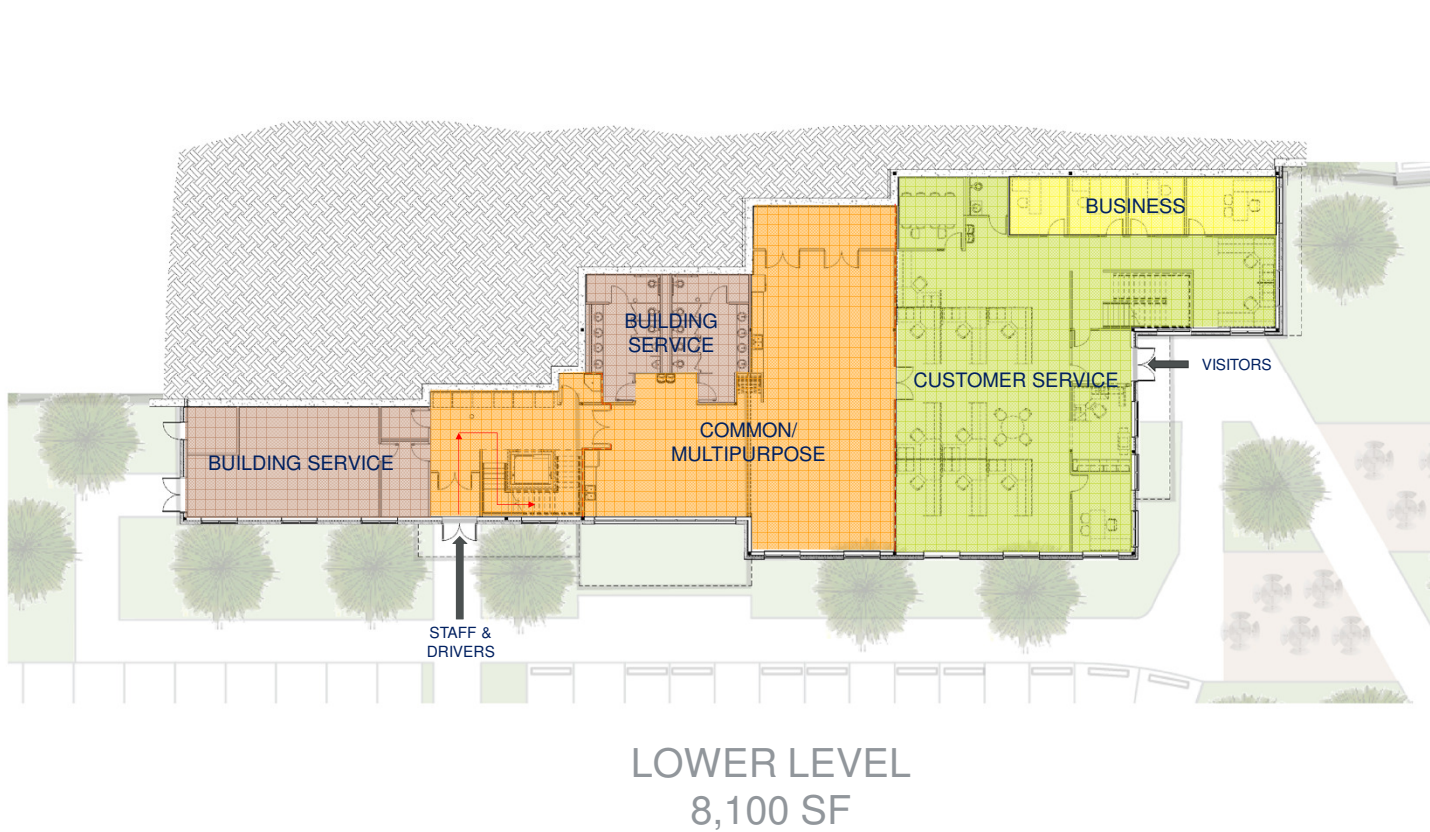


- COMMON AREAS
- ADMINISTRATION
- PREVENTIVE MAINTENANCE & REPAIR WORK BAYS
- PARTS, STORAGE, & WORKSHOP
- M & O



55,580 SF (Circulation 8%)

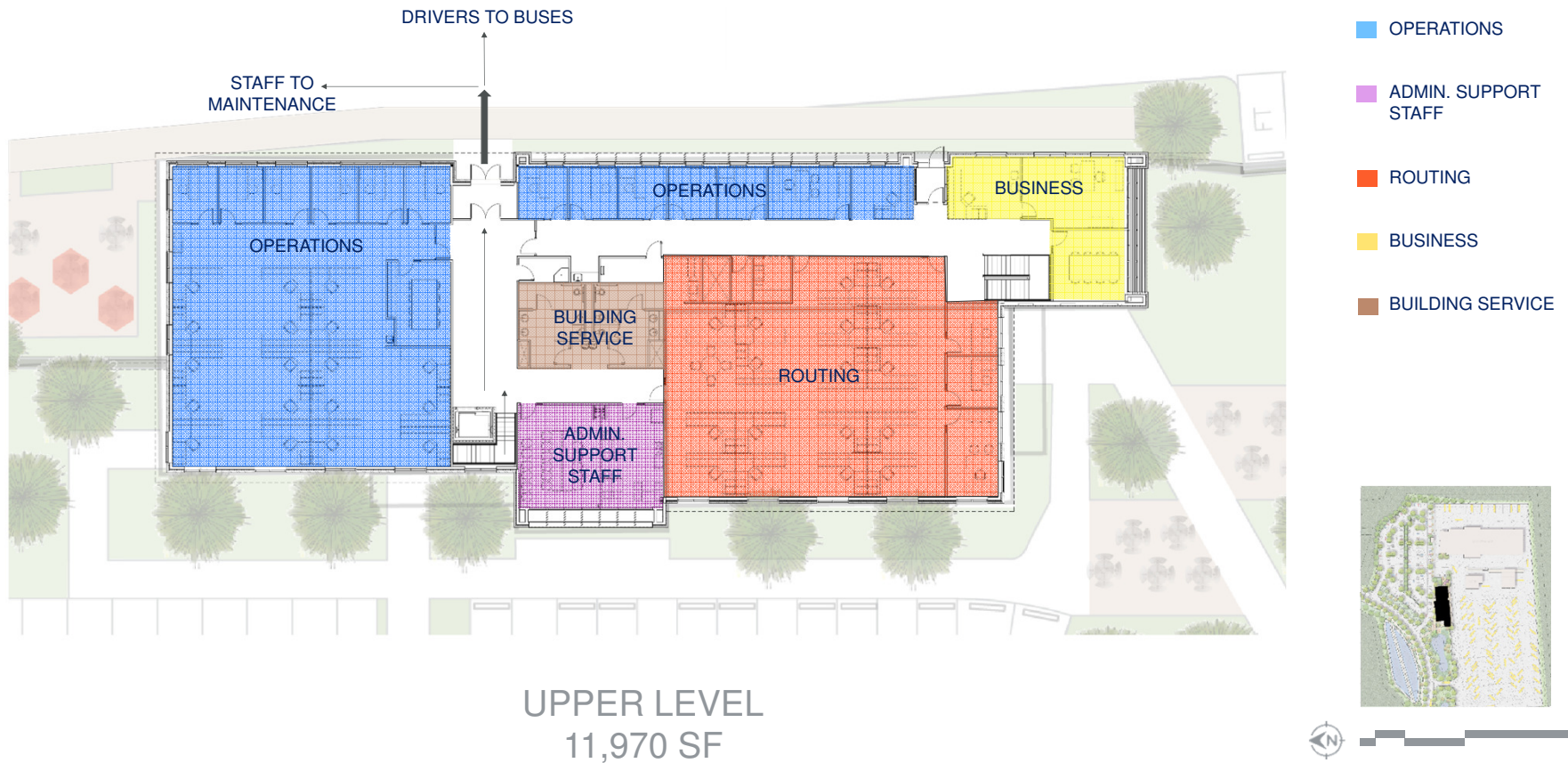
MIDDLE CREEK TRANSPORTATION FACILITY: OPS. & ADMIN. FLOOR PLAN



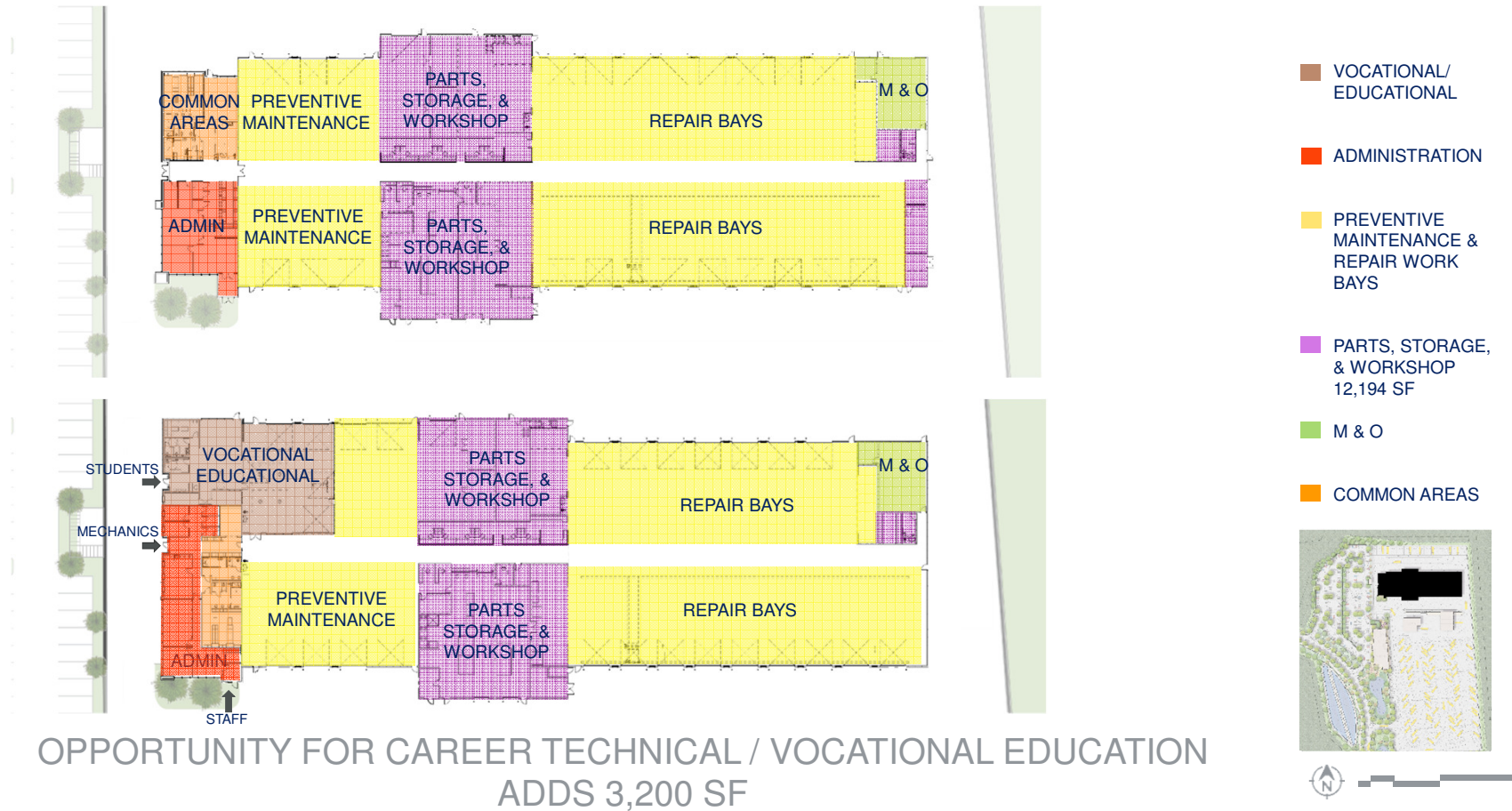
- BUILDING SERVICE
- COMMON/ MULTIPURPOSE
 - DRIVER WAITING
 - RESTROOMS
 - KITCHEN/BREAK
 - FORMAL TRAINING
 - MEETING SPACE
 - WORK SPACES
 - STORAGE
 - WI-FI ENABLED
 - TEMPORARY CALL CENTER
- CUSTOMER SERVICE
- BUSINESS



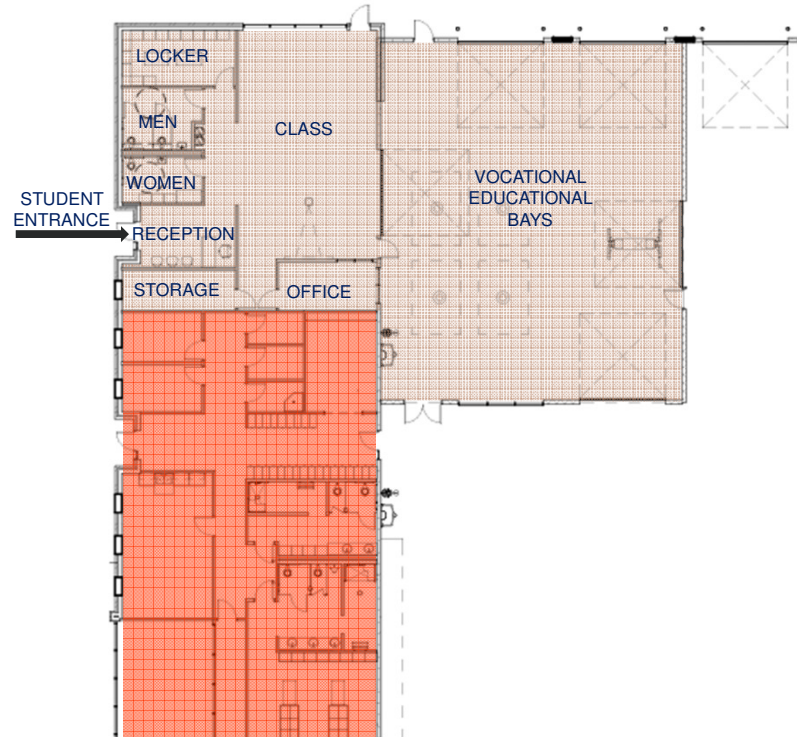
MIDDLE CREEK TRANSPORTATION FACILITY: OPS. & ADMIN. FLOOR PLAN



MIDDLE CREEK TRANSPORTATION FACILITY: MAINTENANCE FLOOR PLAN WITH CTE



MIDDLE CREEK TRANSPORTATION FACILITY: MAINTENANCE FLOOR PLAN WITH CTE



- VOCATIONAL/ EDUCATIONAL BAYS
2890 SF
- CLASS
851 SF
- OFFICE
128 SF
- STORAGE
122 SF
- RECEPTION
129 SF
- RESTROOMS & LOCKERS
398 SF



OPPORTUNITY FOR CAREER TECHNICAL / VOCATIONAL EDUCATION
4,550 SF



MIDDLE CREEK TRANSPORTATION FACILITY: MAINTENANCE



MAINTENANCE

MIDDLE CREEK TRANSPORTATION FACILITY: OPERATIONS & ADMINISTRATION



OPERATIONS & ADMINISTRATION

MIDDLE CREEK TRANSPORTATION FACILITY: OPERATIONS & ADMINISTRATION



OPERATIONS & ADMINISTRATION

MIDDLE CREEK TRANSPORTATION FACILITY: SCHEMATIC DESIGN

Construction Cost

- 29 Million (Including 2.5 M in Contingency)
- Not including Tempered Air Maintenance
 - \$921,000

Value Add Alternate under Design

- Full Wash Building (\$900,000)
- Full Fueling (\$250,000)

Value Add for Consideration

- CTE / Vocational Education Space (\$680,000)

NCDEQ & Duke Energy

- WCPSS is coordinating with Duke Energy and NCDEQ on seeking grant funding from the Volkswagen Settlement, for the purchase of electric school buses and charging infrastructure installation.

