



WAKE COUNTY
PUBLIC SCHOOL SYSTEM

Non-Traditional Calendar Schools Review

Board of Education Work Session, February 21, 2017

Prepared by: Office of Student Assignment, 2017

Policy 4150

School Assignment and Transfers

a. Student Achievement

Student populations at each school will provide an optimal opportunity for academic success for all students. Factors for consideration include:

- 1) providing an opportunity for families to request calendar, magnet, and application schools to support an individual student's educational needs;

d. Operational Efficiency

Assignments will optimize the use of school facilities and transportation resources. Factors for consideration include:

- 1) minimizing under-enrolled schools;
- 2) minimizing overcrowded schools; and
- 3) maximizing transportation efficiencies

Timeline for Review and Implementation

DATES	ACTIONS
February 21, 2017	Board Work Session – staff reviews May 11, 2016 <i>year-round schools review</i> ; presents track 4 school analysis and recommendations; seeks guidance from BoE; opens website for feedback.
March 7, 2017	Board work session – staff presents website feedback; continued discussion of track 4 schools and Carver ES recommendations, if needed.
March 21, 2017	Board Work Session – staff presents multi-track year-round school analysis; makes recommendations on the number of multi-track year-round schools for efficient operation; opens website for feedback Board meeting – board decision on calendar change recommendations from the March 7, 2017 work session for identified track 4 schools.
April 4, 2017	Board work session – staff shares website feedback with BoE; makes recommendations on multi-track school calendar; opens website for feedback.
April 18, 2017	Board work session – staff shares website feedback with BoE; continued discussion of multi-track schools recommendations, if needed.
May 2, 2017	Board work session – staff presents modified calendar school analysis (magnet schools); seeks guidance from BoE. Board meeting – board decision on calendar change recommendations from the April 18, 2017 work session for identified multi-track year-round schools.
May 16, 2017	Board work session – staff presents modified calendar recommendations; opens website for feedback; – staff presents scope of work and timeline for 2018-19 Enrollment Plan.
June 6, 2017	Board work session – staff shares website feedback; continued discussion of modified calendar schools recommendation, if needed.
June 20, 2017	Board meeting – board decision on calendar change recommendations from the June 6, 2017 work session for identified modified calendar schools.

Begin Review with

Focus on Track 4 Schools and Carver ES (only modified school that is non-magnet^)

TRACK 4 (2/21/2017)	MULTI-TRACK (3/21/2017)		MODIFIED (5/16/2017)
Lake Myra ES	Adams ES	Oak Grove ES	Carver ES^
Lockhart ES	Alston Ridge ES	Olive Chapel ES	Partnership ES
Rand Road ES	Ballentine ES	Pleasant Union ES	Centennial MS
Timber Drive ES	Banks Road ES	Salem ES	Moore Square MS
Vance ES	Brassfield ES	Sanford Creek ES	Southeast Raleigh HS
East Wake MS**	Brier Creek ES	Sycamore Creek ES	
North Garner MS	Carpenter ES	Turner Creek ES	
	Durant Road ES	West Lake ES	
Carver^	Harris Creek ES	Willow Springs ES	
	Herbert Akins ES	Durant Road MS	
Barwell Road ES*	Heritage ES	East Cary MS	
Hodge Road ES*	Holly Grove ES	Heritage MS	
Walnut Creek ES*	Holly Springs ES	Holly Grove MS	
Wilburn ES*	Jones Dairy ES	Lufkin Road MS	
	Laurel Park ES	Pine Hollow MS	
	Middle Creek ES	Rolesville MS	
	Morrisville ES	Salem MS	
	North Forest Pines ES	West Lake MS	

[*ESM School | **Restart school | ^Include with track 4 schools |
 | River Bend YR ES not listed - On Traditional Calendar in 2017-18 |

Under Consideration

The analysis summarized in this report will provide perspective on how calendar options are related to choice of school and school crowding.

Findings presented today will consider:

- **Spatial Analysis of Utilization**
- **Travel Distance or “Transportation Burden”**
- **Base vs. Calendar Option Populations**
- **Calendar Option Application Data**

Calendar Options: Summary

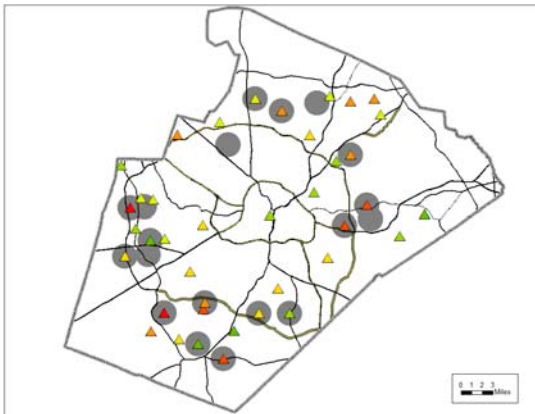
Although there are areas in which a calendar preference may be inferred from the data, **school calendar in general is not an isolated factor in a family's choice of which WCPSS school to attend.**

Other factors may have a greater influence in school choice:

- Distance to school
- Bus transportation
- Perceived school reputation
- Academic standing of school
- Calendar
- School programs
- Feeder patterns
- Work location
- Child care
- Siblings

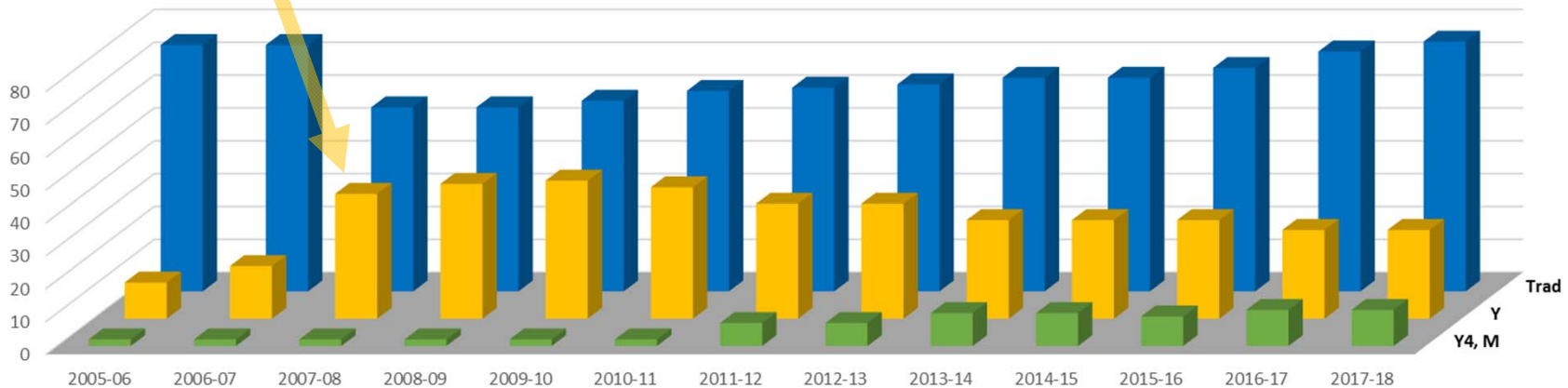
Review of May 11, 2016
Facility Committee Presentation

How Did We Get Here?



2007-08: 19 elementary schools converted from Traditional calendar to Year-Round (multi-track)

Number of Elementary Schools
Traditional vs. Year-Round (multi-track) vs. One-Track & Modified



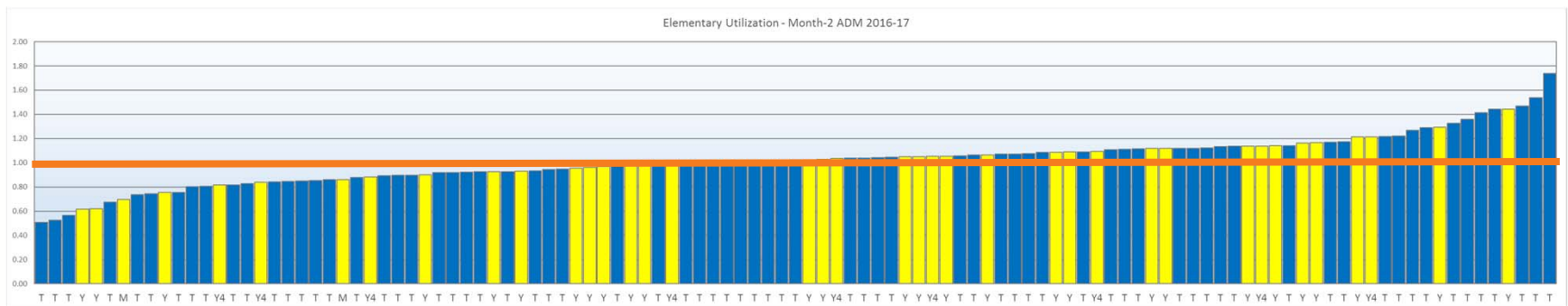
Update of May 11, 2016

Facility Committee Presentation *(updated with 2016-17 membership)*

2016-17 Utilization (Elementary)

Elementary school utilization (NC DPI Month-2 ADM and WCPSS Planned Capacity)

- 40 out of 72 (56%) **Traditional** schools are over 100% utilization
- 22 out of 39 (56%) **Non-Traditional** schools (Y, Y4, or M) are over 100% utilization



New Elementary Schools open for 2016-17:

- Beaverdam ES (Traditional)
- White Oak ES (Traditional)
- Oak View ES (Traditional)
- Pleasant Grove ES (Traditional)

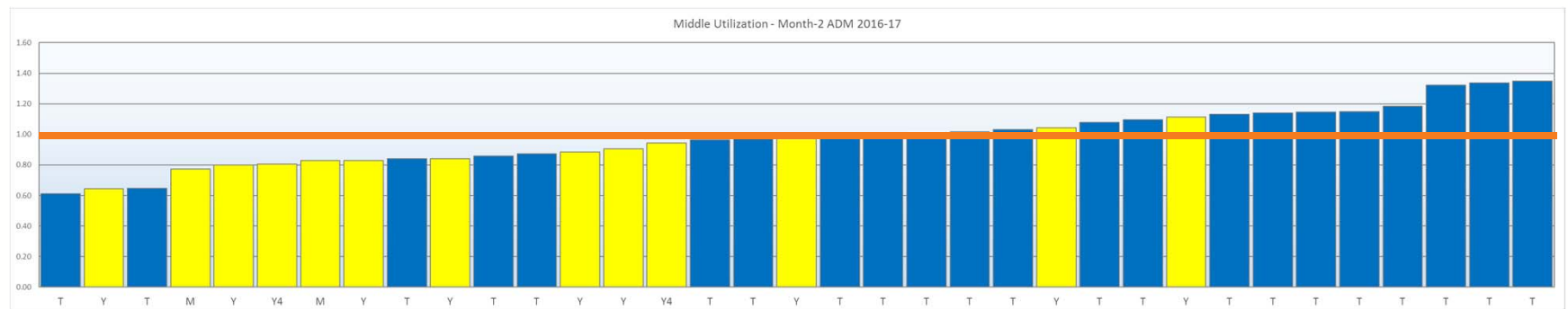
River Bend ES will change to Traditional in 2017-18

Facility Committee Presentation *(updated with 2016-17 membership)*

2016-17 Utilization (Middle)

Middle school utilization (NC DPI Month-2 ADM and WCPSS Planned Capacity)

- 14 out of 22 (64%) **Traditional** schools are over 100% utilization
- 2 out of 13 (15%) **Non-Traditional** schools (Y, Y4, or M) are over 100% utilization



New Middle Schools open for 2016-17:

- *Pine Hollow MS (Year-Round, Multi-Track)*

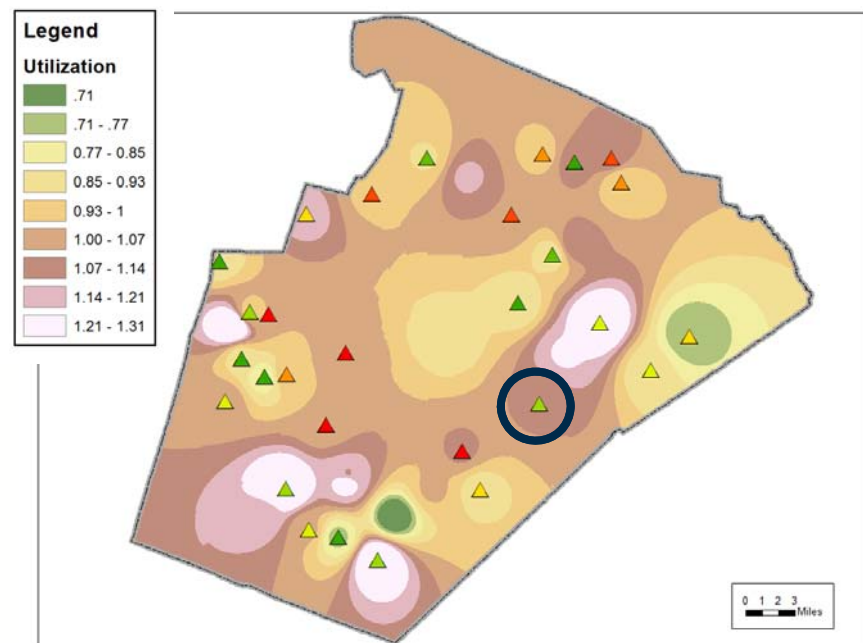
Base vs. Calendar Option (Elementary)

- Background is utilization “heat map”
- \triangle = Non-Traditional calendar option
- \triangle = Low calendar option share of ADM
- \triangle = High calendar option share of ADM

EXAMPLE: Barwell Rd ES (circled)

- Track 4 calendar option school
- 2015-16 utilization: 108% of Planned Capacity (2016-17: 105%)
- 2015-16 calendar option share of ADM: 9% (2016-17: 5%)

Non-Traditional Calendar Option 2015-16 (Y, Y4 and M options)



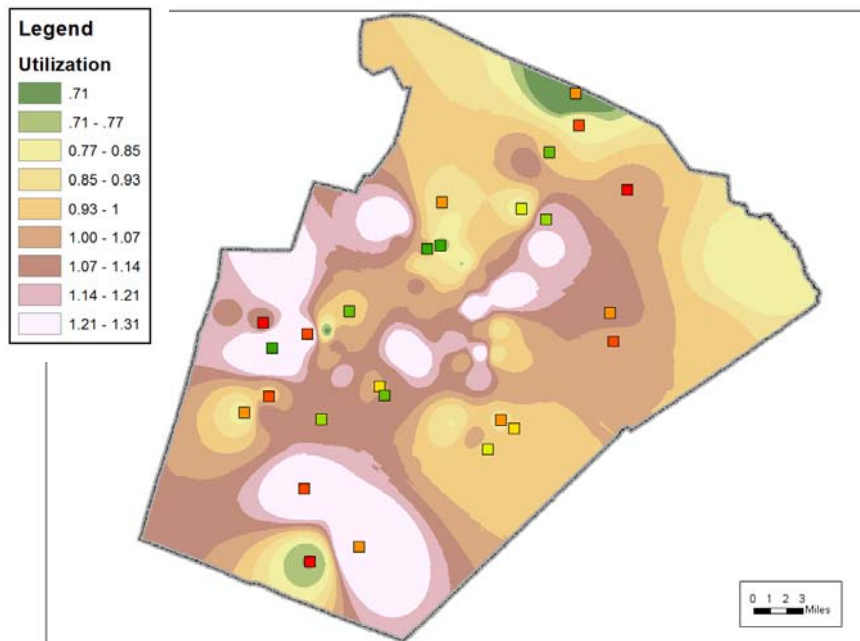
Calendar Option vs. ADM: 1% 60%



Review of May 11, 2016
Facility Committee Presentation

Base vs. Calendar Option (Elementary)

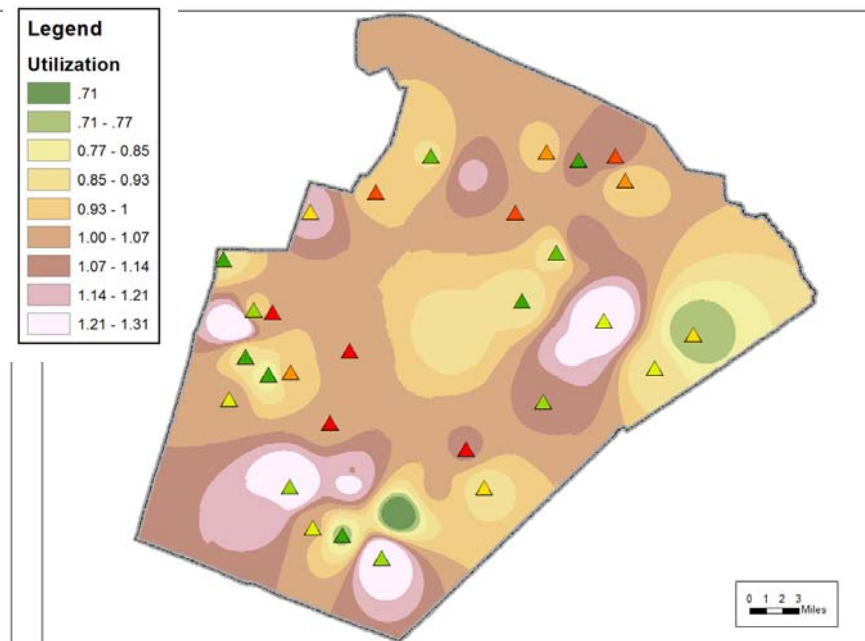
Traditional Calendar Option 2015-16



Calendar Option vs. ADM: 4% 60%



Non-Traditional Calendar Option 2015-16 (Y, Y4 and M options)



Calendar Option vs. ADM: 1% 60%



2016-17: Track 4 (Y4) Schools and Carver ES

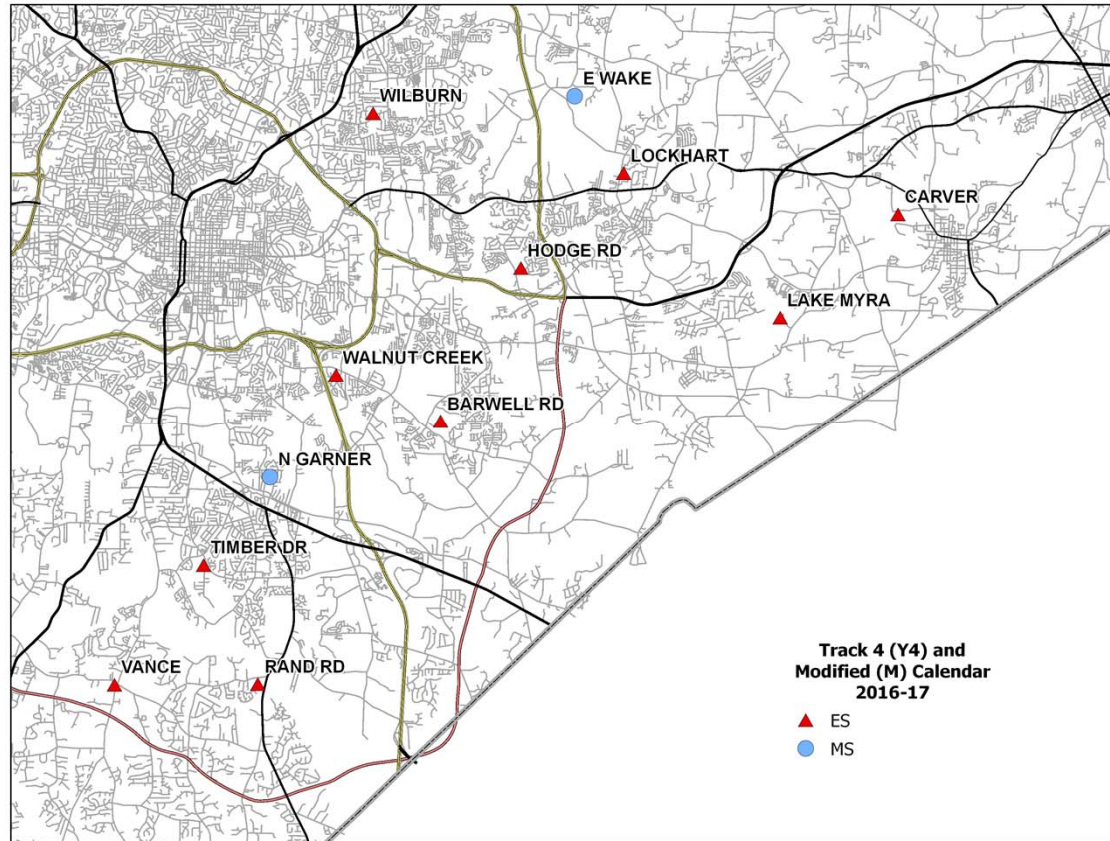
Elementary Schools

Barwell Rd ES (Y4) *
Carver ES (M)
Hodge Rd ES (Y4) *
Lake Myra ES (Y4)
Lockhart ES (Y4)
Rand Rd ES (Y4)
Timber Dr ES (Y4)
Vance ES (Y4)
Walnut Creek ES (Y4) *
Wilburn ES (Y4) *

Middle Schools

East Wake MS (Y4)
North Garner MS (Y4)

* ESM Schools



2016-17: Base vs. Calendar Option

Traditional TO / FROM Non-Traditional

Elementary	ADM ¹	Base ²	Attending Base ²	TO Cal Opt In ²	Cal Opt In share of ADM	FROM Cal Opt Out ²	Cal Opt Out share of ADM ³
Traditional	19,659	19,977	12,214	4,307	22%	3,078	17%
Non-Traditional (Y, Y4, M)	22,929	24,118	15,543	4,411	19%	3,445	16%
Total	42,588	44,095	27,757	8,718	20%	6,523	16%
Middle							
Traditional	13,714	15,922	10,717	1,863	14%	2,464	17%
Non-Traditional (Y, Y4, M)	10,630	10,321	7,025	2,950	28%	1,616	17%
Total	24,344	26,243	17,742	4,813	20%	4,080	17%

1. NC DPI Month-2 ADM
2. 2016-17 WCPSS geocode, 1020/16
3. FROM / (FROM – TO + ADM)

2016-17: Base vs. Calendar Option

Traditional TO / FROM Non-Traditional

Elementary	ADM ¹	Base ²	Base to Base ²	TO Cal Opt In ²	Cal Opt In share of ADM	FROM Cal Opt Out ²	Cal Opt Out share of ADM ³
Barwell Rd (Y4) * ^	814	1,499	735	37	5%	248	24%
Carver (M)	441	507	322	69	16%	21	5%
Hodge Rd (Y4) * ^	644	1,054	574	n/a	n/a	152	19%
Lake Myra (Y4)	647	637	445	83	13%	87	13%
Lockhart (Y4)	585	623	383	111	19%	104	18%
Rand Rd (Y4)	557	530	381	88	16%	49	9%
Timber Dr (Y4)	644	447	256	267	41%	55	13%
Vance (Y4)	486	711	418	n/a	n/a	54	10%
Walnut Creek (Y4) * ^	781	1,182	702	n/a	n/a	72	8%
Wilburn (Y4) *	634	767	440	69	11%	58	9%
Totals	6,233	7,957	4,656	724	12%	900	14%
Middle							
East Wake (YR)	827	1,212	756	64	8%	159	17%
North Garner (Y4)	799	1,193	686	95	12%	143	17%
Total	1,626	2,405	1,442	159	10%	302	17%

1. NC DPI Month-2 ADM
 2. 2016-17 WCPSS geocode, 1020/16
 3. FROM / (FROM – TO + ADM)
- * ESM in 2016-17
- ^ Impacted by new school

From previous slide
 Elementary Non-Traditional
 Calendar Option share of
 ADM: **19%**

From previous slide
 Middle Non-Traditional
 Calendar Option share
 of ADM: **28%**

Calendar Options: Summary

Although there are areas in which a calendar preference may be inferred from the data, **school calendar in general is not an isolated factor in a family's choice of which WCPSS school to attend.**

Other factors may have a greater influence in school choice:

- Distance to school
- Bus transportation
- Perceived school reputation
- Academic standing of school
- Calendar
- School programs
- Feeder patterns
- Work location
- Child care
- Siblings

Recommendation

East Wake MS

Conversion of East Wake MS (Year-Round Single Track) to Traditional calendar for 2018-19.

- Rolesville MS (YR) becomes the Year-Round (multi-track) calendar option for East Wake MS, Wendell MS, and Zebulon MS
- No capacity change

Recommendation

Elementary Feeder Schools to East Wake MS

Conversion of Lockhart ES (Year-Round Single Track) and Carver ES (Modified) to Traditional calendar for 2018-19.

- Lake Myra ES (Y4) becomes the Year-Round (multi-track) calendar option in 2018-19 for those Traditional calendar elementary schools feeding to East Wake MS
- Net capacity gain

Middle	Elementary	Calendar	Proposed
East Wake		Y4	T
	Barwell Rd (ESM)	Y4	
	Beaverdam	T	T
	Carver	M	T
	Hodge Rd (ESM)	Y4	T
	Lake Myra	Y4	Y*
	Lockhart	Y4	T
	Partnership	M	M

T = Traditional
Y = Year-Round (multi-track)
Y4 = Year-Round (single track)

* Feed to Rolesville MS

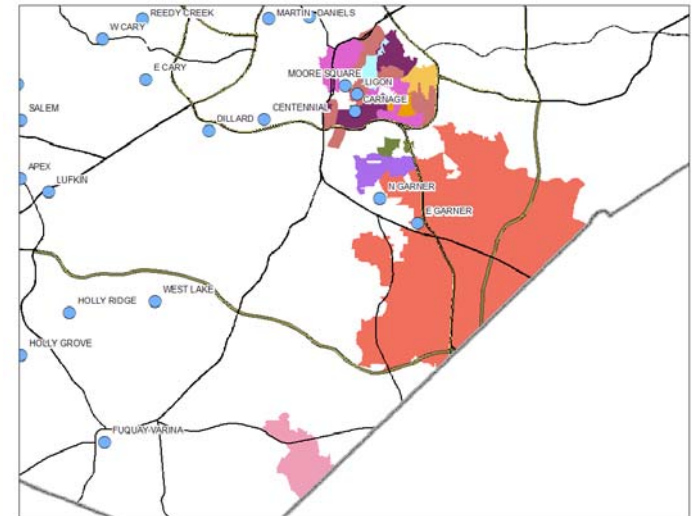
Recommendation

North Garner MS

Conversion of North Garner MS (Year-Round Single Track) to Traditional calendar for 2018-19.

- West Lake MS becomes the Year-Round (multi-track) calendar options for middle schools having a North Garner MS calendar option: East Garner MS and Ligon MS.
- No capacity change

NOTE: Martin MS, West Millbrook MS, Carnage MS, Daniels MS, Dillard Drive MS, Fuquay-Varina MS, Holly Ridge MS, Leesville Road MS, Martin MS, and West Millbrook MS have small areas having a North Garner MS calendar option.



Recommendation

Elementary Feeder Schools to North Garner MS

Conversion of Rand Road ES (Year-Round Single Track) and Vance ES (Year-Round Single Track) to Traditional calendar for 2018-19.

- Timber Drive ES becomes Year-Round (multi-track) calendar option in 2018-19 for those elementary schools feeding to North Garner MS
- Net Capacity gain

T = Traditional
Y = Year-Round (multi-track)
Y4 = Year-Round (single track)

Middle	Elementary	Calendar	Proposed
North Garner		Y4	T
	Creech Rd (ESM)	T	T
	E Garner (ESM)	T	T
	Rand Rd	Y4	T
	Smith (ESM)	T	T
	Timber Drive	Y4	Y*
	Vance	Y4	T
	Vandora Springs	T	T
	Yates Mill	T	T

* Feed to West Lake MS

Recommendation

Elementary ESM Schools

Barwell Road ES (YR4)**
Hodge Road ES (YR4)*
Walnut Creek ES (YR4)**
Wilburn ES (YR4)*
*ESM School
**ESM and Restart School

- No changes for 2018-19 school year.
- Continue to review how the school is using calendar to support students' needs, and to gather feedbacks from parents and community.

Impact: Capacity Changes

- Conversion of Lake Myra ES (Y4) and Timber Drive (Y4) to multi-track year-round (Y)

Elementary School	Current Planned Capacity	Proposed Capacity	Difference
Carver (M)	632	632	0
Lake Myra (Y4)	771	1,049	278
Lockhart (Y4)	514	514	0
Rand Rd (Y4)	632	632	0
Timber Dr (Y4)	589	708	119
Vance (Y4)	490	490	0
Totals	3,628	4,025	397
Middle Schools	Current Planned Capacity	Proposed Capacity	Difference
East Wake (YR)	954	954	0
North Garner (Y4)	993	993	0
Total	1,947	1,947	0

Conversion of single track (Y4) calendar schools to traditional calendar (T) does not change capacities

Summary of Recommended Calendar Changes – 2018-19

MIDDLE SCHOOL	ELEMENTARY FEEDER	CURRENT CALENDAR	RECOMMENDED CALENDAR	CURRENT CALENDAR OPTION	CURRENT CALENDAR OPTION 2	CURRENT CALENDAR OPTION 3	RECOMMENDED CALENDAR OPTION
East Wake MS		T4	TRAD	Wendell			Rolesville
	Barwell ES	T4	N/C	Creech Road	East Garner		
	Forestville ES	TRAD	N/C	Lockhart			Lake Myra
	Hodge Road ES	T4	N/C	Knightdale	Forestville		
	Knightdale ES	TRAD	N/C	Lockhart			Lake Myra
	Lockhart ES	T4	TRAD	Knightdale	Forestville		Lake Myra
Wendell MS		TRAD	N/C	East Wake			Rolesville
	Carver ES	MOD	TRAD	Forestville			Lake Myra
	Lake Myra ES	T4	MULTI-TRACK	Knightdale	Forestville		
	Wendell ES	TRAD	N/C	Carver	Lake Myra		
North Garner MS		T4	TRAD	Dillard Drive			West Lake
	Creech Road ES	TRAD	N/C	Rand Road	Timber Drive		
	East Garner ES	TRAD	N/C	Rand Road	Barwell		
	Rand Road ES	T4	TRAD	Aversboro			Timber Drive
	Smith ES	TRAD	N/C	Timber Drive			
	Timber Drive ES	T4	MULTI-TRACK	Creech Road	East Garner		
	Vance ES	T4	TRAD	Aversboro			Timber Drive
	Vandora Springs ES	TRAD	N/C	Timber Drive			
	Yates Mill ES	TRAD	N/C	Oak Grove	Adams	Timber Drive	
East Garner MS		TRAD	N/C	North Garner			West Lake
	Aversboro ES	TRAD	N/C	Timber Drive			
	Barwell ES	T4	N/C	Creech Road	East Garner		
	Creech Road ES	TRAD	N/C	Rand Road	Timber Drive		
	East Garner ES	TRAD	N/C	Barwell	Rand Road		
	Rogers Lane ES	TRAD	N/C	Lake Myra			
Other related changes							
	Zebulon MS	TRAD	N/C	East Wake			Rolesville
	Wakelon ES	TRAD	N/C	Carver			Lake Myra
	Zebulon ES	TRAD	N/C	Carver			Lake Myra
	Carnage MS	TRAD	N/C	North Garner			West Lake
	Daniels MS	TRAD	N/C	North Garner			West Lake
	Dillard Drive MS	TRAD	N/C	North Garner			West Lake
	Fuquay Varina MS	TRAD	N/C	North Garner			West Lake
	Holly Ridge MS	TRAD	N/C	North Garner			West Lake
	Leesville MS	TRAD	N/C	North Garner			West Lake
	Ligon MS	TRAD	N/C	North Garner			West Lake
	Martin MS	TRAD	N/C	North Garner			West Lake
	West Millbrook MS	TRAD	N/C	North Garner			West Lake

Grandfathering

No District Transportation Provided

Board Policy 4100

- Students will have the opportunity to stay at the same school with their siblings through the exit grade without experiencing involuntary changes in school assignment.
- **However**, when assignments are necessary for the opening of a new school this may not be guaranteed, and **no transportation will be provided**.

Grandfathering, Cont.

No District Transportation Provided

From an existing school to an existing school

- For any student who experiences an assignment change as a result of this proposal **from an existing school to an existing school**, all students are eligible to request a **transfer** to “grandfather” at their current assignment. These requests will be approved.
- Siblings of these “grandfathered” students can request a **transfer** to attend the same school with their sibling. These requests will be approved.
- Students who request to grandfather are **transfer** students and **no transportation will be provided**.

Community Feedback

- An online feedback forum launches today. Parents can find updated information and a link to the forum at
 - www.wcpss.net/calendardiscussion
- The principals of those schools being considered for a calendar change will send a phone message to parents asking for feedback.
- Staff also will send out a phone message to students who live in the base of affected schools but do not currently attend.
- Staff will bring feedback summary to our next meeting.

Next Steps

- **Track 4 school analysis - March 7, 2017**
 - Review website feedback
 - Continue discussion
 - Implement/Modify/Eliminate staff recommendations
- **Multi-track year-round school analysis**
 - Discussion begins on March 21, 2017
- **Modified calendar school analysis (magnet schools)**
 - Discussion begins on May 2, 2017